

## meite HM515

# meite HM515 Professional Frame Point Driver Gun User Manual

## 1. PRODUCT OVERVIEW

The meite HM515 is a manual frame point driver designed for securing backing boards, artwork, and glass within picture frames. This tool is suitable for both professional framers and DIY enthusiasts, offering a reliable method for frame assembly. It operates without the need for an external power source or air compressor.

### Key Features:

- **Manual Operation:** No gas or power supply required.
- **Ergonomic Design:** Features a comfort grip for reduced fatigue during extended use.
- **Adjustable Depth:** Allows for precise control over point insertion depth.
- **Flexible Points:** Compatible with 5/8 inch (15mm) flexible steel points, designed for easy installation and removal.
- **Durable Construction:** Built with an alloy body for longevity.



Figure 1: meite HM515 Frame Point Driver Components. This image displays the various parts of the point driver, including the binding button, full-grip trigger, alloy body, visualization window, nail exit area, and nail adjustment knob.

## 2. SETUP AND LOADING POINTS

Before operating the meite HM515, ensure you have the correct 5/8 inch (15mm) flexible steel points. Always wear appropriate safety glasses when using this tool.

### Loading Flexible Points:

1. **Open the Magazine:** Press the binding button located at the rear top of the tool to release and open the nail magazine.
2. **Pull Out the Nail Rod:** Gently pull the nail rod fully backward until it locks into place.
3. **Insert Points:** Place a strip of flexible points into the magazine with the nail tips facing forward, ensuring they sit correctly within the channel.
4. **Close the Magazine:** Push the nail rod forward until the magazine closes securely. Verify that the points are properly seated and ready for firing.



Figure 2: Steps for Loading Flexible Points. This image illustrates the process of opening the magazine, pulling the nail rod, inserting the point strip, and closing the magazine.

### 3. OPERATING INSTRUCTIONS

Follow these steps for safe and effective operation of your meite HM515 point driver.

#### Driving Points:

1. **Position the Tool:** Place the front of the point driver firmly against the backing board or material where you intend to insert a point. Ensure the tool is perpendicular to the surface for optimal point insertion.
2. **Engage the Trigger:** Squeeze the full-grip trigger to drive a flexible point into the material. Apply steady pressure.
3. **Repeat:** Drive additional points as needed around the perimeter of the frame to secure the contents.

#### Adjusting Point Driving Depth:

The HM515 features a nail adjustment knob to control how deep the points are driven into the material.

- **Deeper Insertion:** Turn the nail adjustment knob clockwise to increase the driving depth.
- **Shallower Insertion:** Turn the nail adjustment knob counter-clockwise to decrease the driving depth.



Test the depth adjustment on a scrap piece of material before applying it to your final project.

## Adjustable Strength

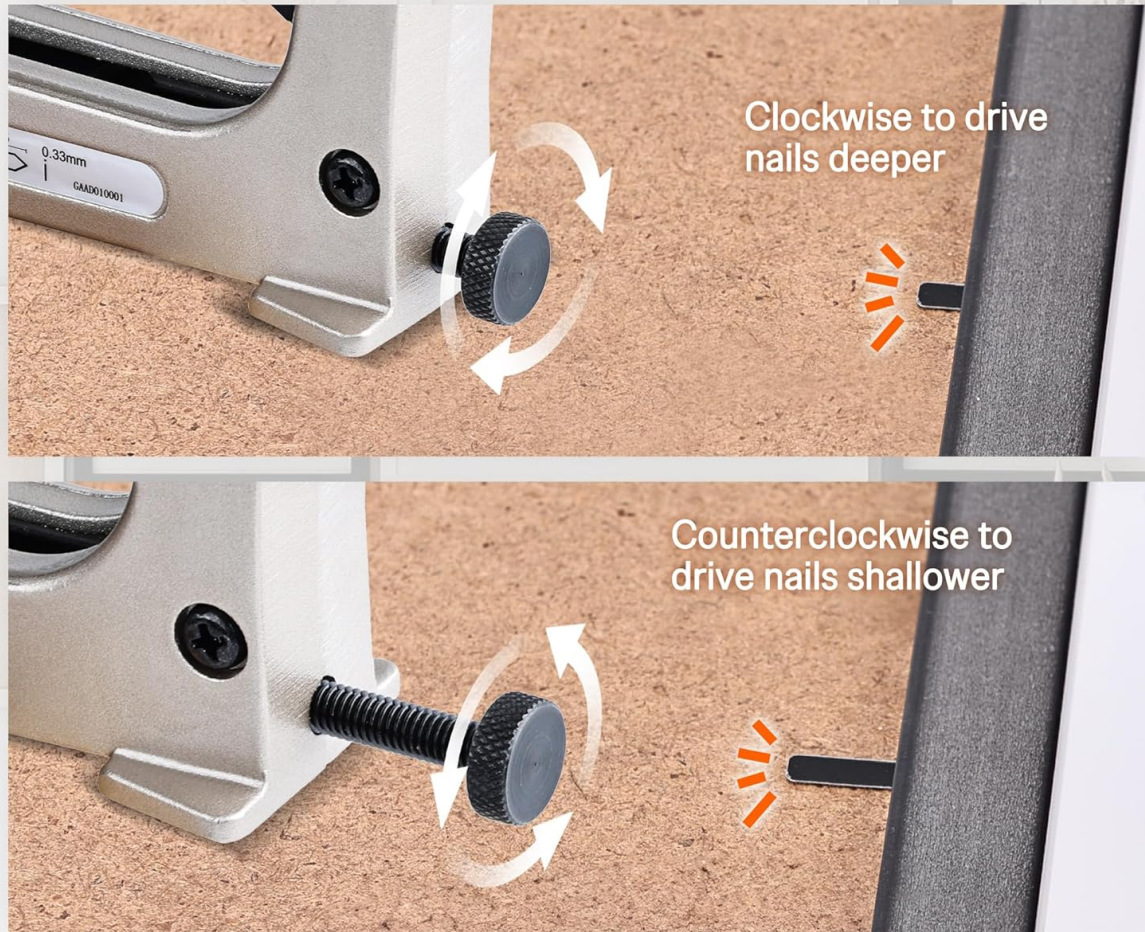


Figure 3: Point Driving Depth Adjustment. This image illustrates how to adjust the driving depth of the points using the knob on the tool.

### Applications:

The meite HM515 is ideal for various framing and DIY projects, including:

- Securing backing boards in photo frames.
- Assembling art frames.
- Constructing shadow boxes.



Figure 4: Typical Applications. This image demonstrates the point driver in use on a picture frame and shows examples of different framing projects.

## 4. MAINTENANCE

Proper maintenance ensures the longevity and optimal performance of your meite HM515 point driver.

- **Cleaning:** Regularly wipe down the tool with a clean, dry cloth to remove dust and debris. Avoid using harsh chemicals or solvents.
- **Storage:** Store the point driver in a dry, cool place, away from direct sunlight and moisture. Keep it out of reach of children.
- **Inspection:** Periodically inspect the tool for any signs of wear or damage. Ensure all moving parts operate smoothly.

## 5. TROUBLESHOOTING

If you encounter issues with your meite HM515, refer to the following common problems and solutions:

Problem	Possible Cause	Solution
---------	----------------	----------



Problem	Possible Cause	Solution
Points not driving fully	Insufficient pressure applied; Depth adjustment set too shallow; Incorrect point size.	Apply more firm pressure to the tool; Adjust the depth knob clockwise for deeper insertion; Ensure you are using 5/8" (15mm) flexible points.
Points jamming in magazine	Points incorrectly loaded; Debris in magazine.	Re-load points ensuring they are properly seated; Clear any debris from the magazine channel.
Tool feels stiff or difficult to operate	Lack of lubrication; Internal debris.	Apply a small amount of light machine oil to moving parts (e.g., trigger pivot); Clean the tool thoroughly.

## 6. SPECIFICATIONS

---

### Tool Specifications:

Feature	Detail
Model	HM515
Operation Mode	Manual
Dimensions (L x W x H)	7.5 x 1.57 x 4.9 inches (190 x 40 x 125 mm)
Weight	1.37 lbs (0.62 kg)
Body Material	Alloy
Color	Black



Figure 5: HM515 Tool Dimensions and Weight. This image provides a visual representation of the tool's physical specifications.

#### Compatible Flexible Points Specifications:

Feature	Detail
Type	Flexible Steel Points
Length	5/8 inch (15 mm)
Width	0.177 inch (4.5 mm)
Thickness	0.013 inch (0.35 mm)

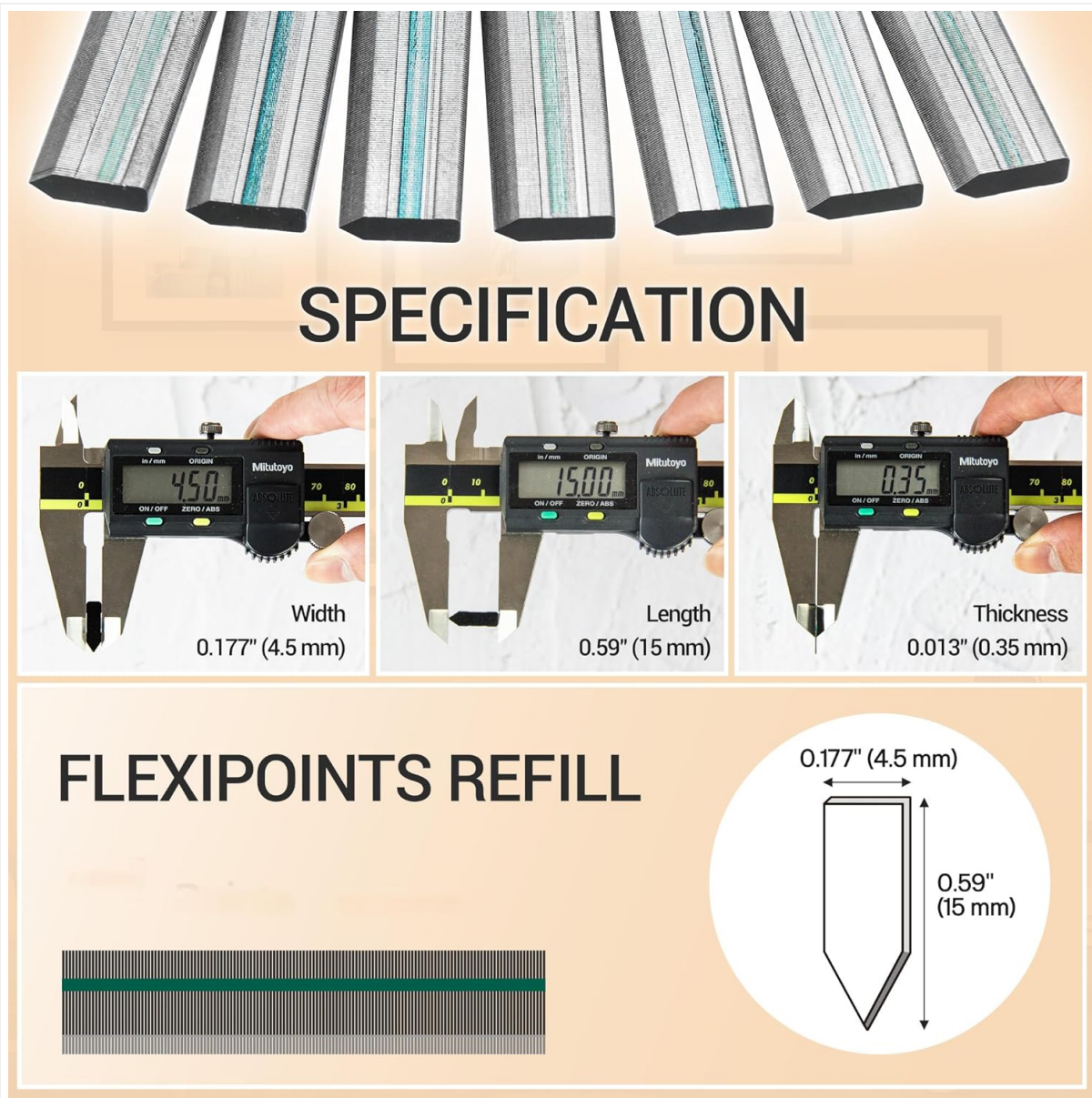


Figure 6: Flexible Point Dimensions. This image provides precise measurements for the compatible flexible points.

## 7. SAFETY INFORMATION

Always prioritize safety when using any tool. Adhere to the following guidelines:

- **Eye Protection:** Always wear safety glasses to protect your eyes from flying debris.
- **Keep Hands Clear:** Ensure hands and fingers are clear of the point exit area and trigger mechanism during operation.
- **Stable Work Surface:** Work on a stable and level surface to prevent accidental slips or movement of the workpiece.
- **Proper Storage:** Store the tool in a secure location, out of reach of children and unauthorized users.
- **Inspect Before Use:** Before each use, inspect the tool for any damage or loose parts. Do not use a damaged tool.