

## Manuals+

[Q & A](#) | [Deep Search](#) | [Upload](#)

manuals.plus /

› [MONSGEEK](#) /

› [MONSGEEK M1 V5 Aluminum Mechanical Keyboard User Manual](#)

**MONSGEEK M1 V5**

# MONSGEEK M1 V5 Aluminum Mechanical Keyboard User Manual

Model: M1 V5

## INTRODUCTION

Thank you for choosing the MONSGEEK M1 V5 Aluminum Mechanical Keyboard. This manual provides comprehensive instructions to help you set up, operate, maintain, and troubleshoot your new keyboard. Please read this manual thoroughly to ensure optimal performance and longevity of your device.



Image: The MONSGEEK M1 V5 Aluminum Mechanical Keyboard, showcasing its 75% layout with a knob and a light blue mechanical switch.

## PACKAGE CONTENTS

Before proceeding, please verify that all items are present in your package:

- MONSGEEK M1 V5 Mechanical Keyboard
- USB-C Cable
- 2.4GHz Receiver
- Keycap Puller (may be included, not explicitly listed but common for hot-swappable keyboards)
- Switch Puller (may be included, not explicitly listed but common for hot-swappable keyboards)

## SETUP

### 1. Initial Charging

For optimal performance, it is recommended to fully charge the keyboard before first use. Connect the provided USB-C cable to the keyboard's USB-C port and the other end to a powered USB port on your computer or a USB wall adapter. The keyboard features an 8000mAh battery.



Image: Diagram illustrating the 8000mAh battery capacity and estimated usage times with RGB on (86H) and off (500H).

## 2. Connectivity Options

The MONSGEEK M1 V5 supports three connection modes: Wired (USB-C), 2.4GHz Wireless, and Bluetooth.

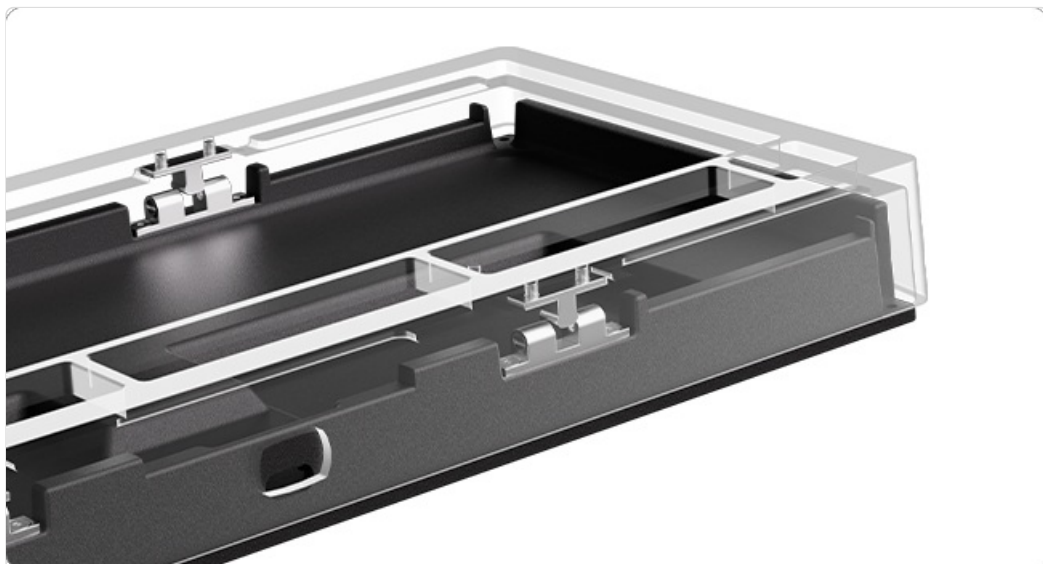


Image: Visual representation of the keyboard's multi-device connectivity options: Bluetooth, USB-C (wired), and 2.4GHz wireless, shown with a tablet, phone, and laptop.

## Wired Connection (USB-C)

1. Connect the USB-C cable to the keyboard's port.
2. Connect the other end of the USB-C cable to an available USB port on your computer.
3. The keyboard will be automatically recognized by your operating system.

## 2.4GHz Wireless Connection

1. Locate the 2.4GHz receiver (dongle) included in the package.
2. Plug the 2.4GHz receiver into an available USB port on your computer.
3. Switch the keyboard's mode selector (usually on the back or side) to 2.4GHz mode.
4. The keyboard should connect automatically.

## Bluetooth Connection

1. Switch the keyboard's mode selector to Bluetooth mode.
2. On your device (PC, tablet, mobile), open Bluetooth settings.
3. The keyboard should appear as "MONSGEEK M1 V5" or similar in the list of available devices.
4. Select the keyboard to pair. Follow any on-screen prompts.
5. The keyboard supports multi-host Bluetooth, allowing connection to multiple devices. Refer to the keyboard's specific key combinations (often Fn + 1/2/3) for switching between paired Bluetooth devices.

# OPERATING INSTRUCTIONS

---

## 1. Knob Functionality

The integrated knob on the MONSGEEK M1 V5 allows for quick adjustments. By default, it controls volume and brightness. It can also be programmed using the MONSGEEK Driver software.

- **Rotate:** Adjusts volume or screen brightness.
- **Press:** Mutes/unmutes audio or cycles through brightness modes.

## 2. RGB Backlighting

The keyboard features customizable RGB backlighting with over 16 preset modes. You can cycle through these modes using specific key combinations (refer to the keyboard's function layer documentation, often Fn + keys) or customize them further with the MONSGEEK Driver.

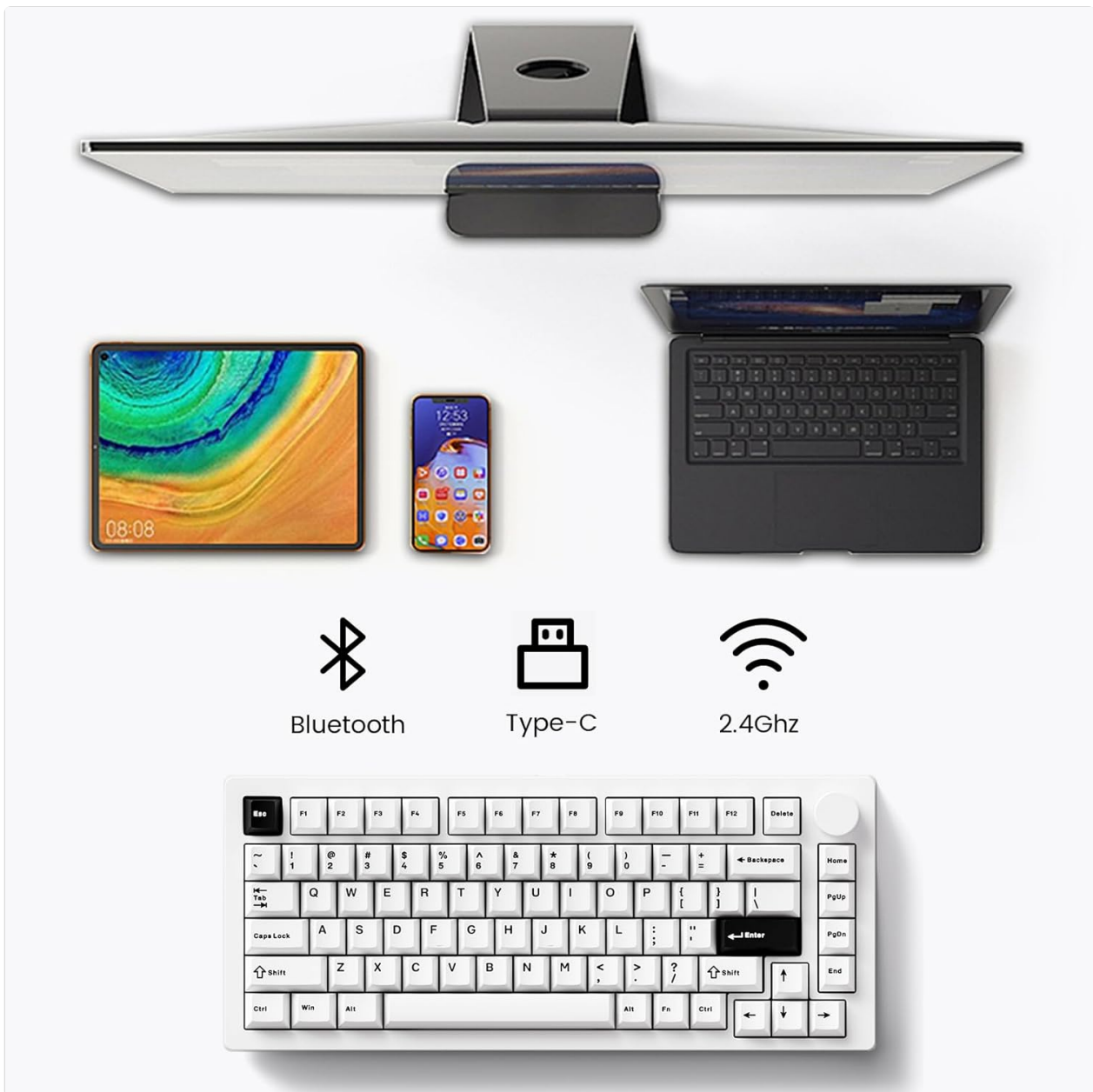


Image: The MONSGEEK M1 V5 keyboard illuminated with vibrant RGB backlighting, demonstrating its customizable lighting effects.

### 3. Programmable Keys (MONSGEEK Driver)

All keys on the MONSGEEK M1 V5 can be programmed using the MONSGEEK Driver software. This allows for remapping keys, creating macros, and customizing RGB lighting effects. The driver software can typically be downloaded from the official MONSGEEK website.

### 4. Hot-Swappable Switches

The keyboard is hot-swappable, meaning you can change mechanical switches without soldering. It supports both 3-pin and 5-pin switches.

1. **Remove Keycap:** Use a keycap puller to gently remove the desired keycap.
2. **Remove Switch:** Use a switch puller to carefully grip the top and bottom clips of the switch and pull it straight up.
3. **Insert New Switch:** Align the pins of the new switch with the holes on the PCB. Press down firmly until the switch clicks into place. Ensure pins are not bent.
4. **Replace Keycap:** Place the keycap back onto the new switch stem.



**Disclaimer:** This data comes from MonsGeek Labs and is for reference only.

Image: A hand demonstrating the removal of a mechanical switch from the keyboard using a switch puller, highlighting the hot-swappable feature.



Image: A magnified view of the keyboard's PCB, showing the hot-swappable sockets designed to accommodate mechanical switches.

## 5. Quick Release Design

The MONSGEEK M1 V5 features a tool-free rapid assembly and disassembly mechanism for its aluminum top and bottom case, facilitating easy customization and maintenance.



## Cherry Profile



Keycap Height Unit:mm

Image: A three-panel image demonstrating the quick release mechanism: 1) pulling out the knob, 2) lifting and pressing the case, and 3) the keyboard opened for modification.



Image: An internal cross-section view of the keyboard, illustrating the gasket-mounted design for improved typing feel and sound.

## MAINTENANCE

### 1. Cleaning

- **Keycaps:** Use a keycap puller to remove keycaps. Clean them with a mild soap solution and a soft cloth, then rinse and dry thoroughly before reattaching.
- **Keyboard Base:** Use a can of compressed air to remove dust and debris from between switches. Wipe

the surface with a slightly damp, lint-free cloth. Avoid excessive moisture.

## 2. Switch and Keycap Replacement

As detailed in the Operating Instructions, the hot-swappable design allows for easy replacement of switches and keycaps. Ensure you use compatible 3-pin or 5-pin mechanical switches and Cherry profile keycaps for optimal fit and performance.



Image: A diagram illustrating the different heights and profiles of Cherry profile keycaps (R1, R2, R3, R4) in millimeters.

## TROUBLESHOOTING

### 1. Keyboard Not Responding

- **Check Connection:** Ensure the USB-C cable is securely connected, or the 2.4GHz receiver is properly plugged in, or Bluetooth is paired.
- **Battery Level:** Charge the keyboard fully. A low battery can cause connectivity issues.
- **Mode Switch:** Verify the keyboard's mode switch is set to the correct connection type (Wired, 2.4GHz, or Bluetooth).
- **Driver:** Ensure the MONSGEEK Driver is installed and updated if using advanced features.

### 2. Keys Not Registering or Double Typing (Chattering)

- **Switch Seating:** Gently press down on the affected keycap to ensure the switch is fully seated in its socket.
- **Switch Replacement:** If a specific switch is consistently malfunctioning, try replacing it with a new one. The hot-swappable design allows for this.
- **Dust/Debris:** Use compressed air to clear any debris around the switch.

### 3. RGB Lighting Issues

- **Brightness:** Adjust brightness using the knob or designated key combinations.
- **Software:** Use the MONSGEEK Driver to check and adjust lighting settings.
- **Reset:** Try resetting the keyboard to factory default settings (refer to driver software or specific key combination).

#### 4. Wireless Lag

- **Interference:** Move the 2.4GHz receiver closer to the keyboard or away from other wireless devices that might cause interference.
- **Wired Mode:** For critical applications like competitive gaming, consider using the wired USB-C connection for the most stable and lowest latency experience.

### SPECIFICATIONS

Feature	Detail
Brand	MONSGEEK
Model	M1 V5
Connectivity Technology	USB-C (Wired), 2.4GHz Wireless, Bluetooth
Keyboard Description	75% Layout, Ergonomic
Special Features	Hot-Swappable, Quick Release Case, Multi-Device Connectivity, 5-Layer Noise Reduction System, Programmable Keys, RGB Backlit, Gasket-Mounted Design
Compatible Devices	PC, Tablet, Mobile Device
Material	Aluminum (Case)
Power Source	Battery Powered (8000mAh)
Item Weight	5 pounds (approx. 2.27 kg)
Included Components	Keyboard, USB-C Cable, 2.4GHz Receiver

### WARRANTY AND SUPPORT

For warranty information, technical support, or further assistance, please refer to the official MONSGEEK website or contact their customer service directly. Keep your purchase receipt as proof of purchase for warranty claims.

Official MONSGEEK Store: [MONSGEEK Amazon Store](#)

