

MOZA mBooster Base Extension Plate

MOZA Racing mBooster Base Extension Plate User Manual

Model: mBooster Base Extension Plate



1. INTRODUCTION

This manual provides comprehensive instructions for the installation, operation, and maintenance of the MOZA Racing mBooster Base Extension Plate. Please read this manual thoroughly before using the product to ensure proper function and safety.

The MOZA Racing mBooster Base Extension Plate is designed to provide additional mounting flexibility and stability for your MOZA Racing wheelbase setup. It extends the mounting surface, allowing for more versatile rig configurations.

2. SAFETY INFORMATION

Always follow these safety guidelines to prevent injury or damage to the product:

- Ensure all connections are secure before use.
- Do not attempt to modify the extension plate.
- Keep the product away from liquids and extreme temperatures.
- Use only with compatible MOZA Racing equipment.
- Handle with care to avoid pinching or crushing hazards during installation.

3. PACKAGE CONTENTS

Verify that all items listed below are present in your package:

- MOZA Racing mBooster Base Extension Plate (1)
- Mounting Hardware (screws, washers, nuts - quantity may vary based on specific kit)
- User Manual (this document)

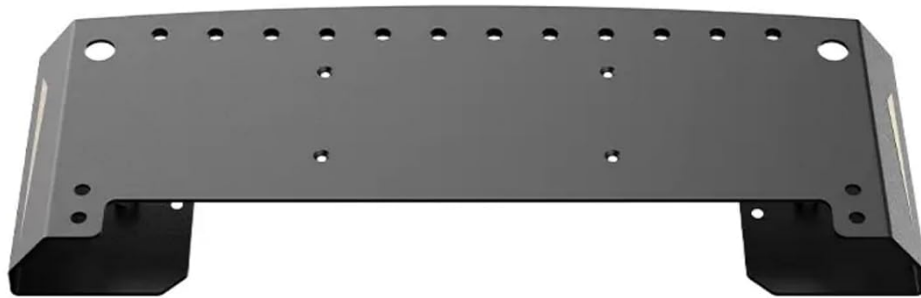


Image: Top view of the MOZA Racing mBooster Base Extension Plate, showing its flat surface and mounting holes.

4. SETUP AND INSTALLATION

Follow these steps to properly install the mBooster Base Extension Plate:

1. **Prepare your setup:** Ensure your racing rig or desk is stable and clean. Unpack all components from the box.

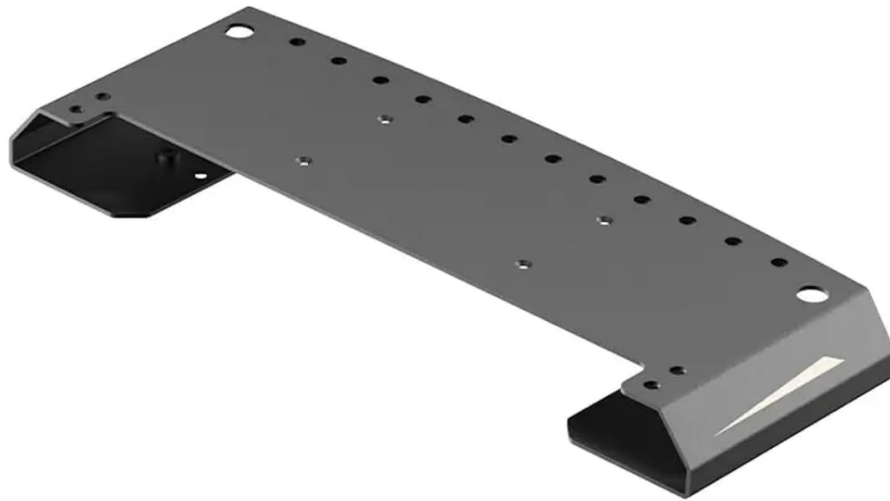


Image: Angled view of the MOZA Racing mBooster Base Extension Plate, highlighting its structural design and mounting points.

2. **Position the extension plate:** Place the mBooster Base Extension Plate on your desired mounting surface. Align the mounting holes on the extension plate with the corresponding holes on your racing rig or desk.
3. **Secure the plate:** Use the provided mounting hardware (screws, washers, nuts) to firmly attach the extension plate to your rig. Ensure all screws are tightened securely but do not overtighten.

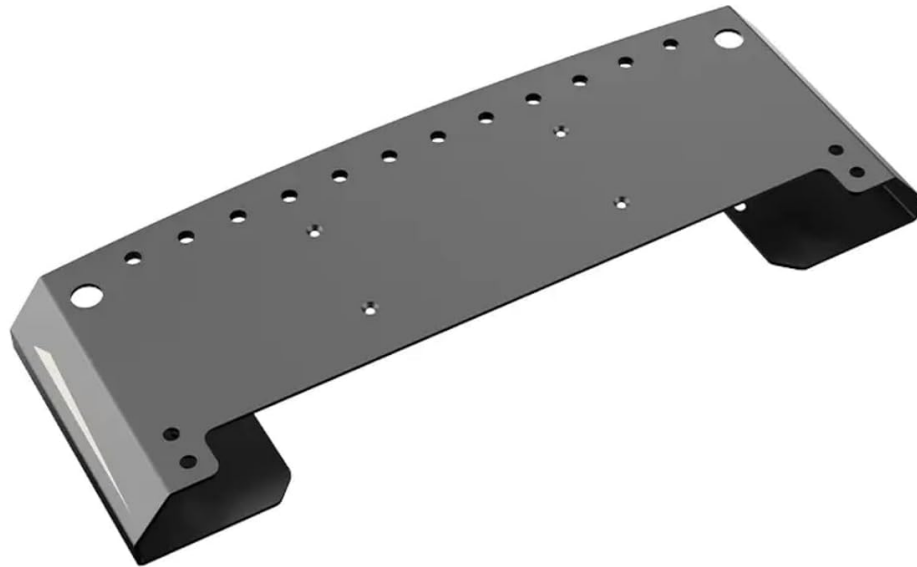


Image: Side view of the MOZA Racing mBooster Base Extension Plate, showing its profile and the raised sections for base support.

4. **Mount your wheelbase:** Once the extension plate is securely installed, you can now mount your MOZA Racing wheelbase onto the extension plate using the appropriate mounting points on the plate. Refer to your wheelbase's manual for specific mounting instructions.

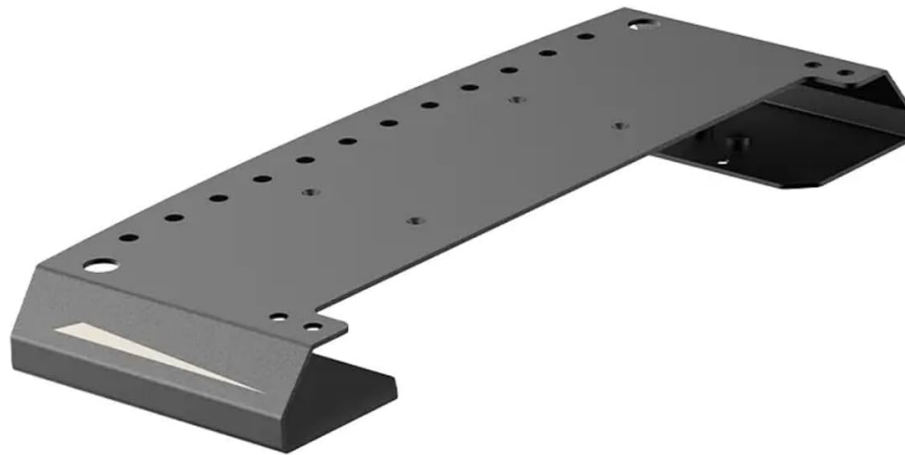


Image: Perspective view of the MOZA Racing mBooster Base Extension Plate, illustrating its overall shape and the various mounting holes.

5. **Final check:** Verify that the extension plate and your wheelbase are stable and do not wobble. Adjust tightness if necessary.

5. OPERATING INSTRUCTIONS

The mBooster Base Extension Plate is a passive component designed to enhance the mounting capabilities of your MOZA Racing wheelbase. It does not require any electrical power or software for operation.

Once installed, it provides a stable and extended platform for your wheelbase, allowing for improved ergonomics and compatibility with various racing cockpits and desk setups.

Ensure that the wheelbase is securely fastened to the extension plate before beginning any racing simulation.

6. MAINTENANCE

The MOZA Racing mBooster Base Extension Plate requires minimal maintenance:

- **Cleaning:** Wipe the surface with a soft, dry cloth to remove dust and debris. Do not use abrasive cleaners or solvents.

- **Inspection:** Periodically check all mounting screws to ensure they remain tight. Retighten if necessary.
- **Storage:** If storing the plate separately, keep it in a dry, cool place away from direct sunlight and moisture.

7. TROUBLESHOOTING

This section addresses common issues you might encounter with the mBooster Base Extension Plate.

Problem	Possible Cause	Solution
Plate feels unstable or wobbly after installation.	Mounting screws are not sufficiently tightened.	Ensure all mounting screws securing the extension plate to your rig, and your wheelbase to the extension plate, are tightened firmly.
Wheelbase does not align with holes on the extension plate.	Incorrect orientation of the extension plate or wheelbase.	Verify that the extension plate is oriented correctly and that your wheelbase is positioned according to its own mounting specifications. The plate offers multiple mounting patterns.
Missing mounting hardware.	Package contents incomplete.	Contact MOZA Racing customer support or your retailer for replacement parts.

8. SPECIFICATIONS

Key specifications for the MOZA Racing mBooster Base Extension Plate:

- **Model:** mBooster Base Extension Plate
- **ASIN:** B0F8NL2TS5
- **Package Dimensions:** 16 x 8 x 3 inches (40.64 x 20.32 x 7.62 cm)
- **Item Weight:** 3.5 pounds (1.59 kg)
- **Material:** High-strength metal alloy
- **Compatibility:** Designed for MOZA Racing wheelbases

9. WARRANTY AND SUPPORT

For warranty information and technical support, please refer to the official MOZA Racing website or contact their customer service directly. Warranty terms and conditions may vary by region and retailer.

MOZA Racing Official Website: www.mozaracing.com

Please retain your proof of purchase for warranty claims.

