

Ultenic S1

Ultenic S1 Pool Skimmer Robot Instruction Manual

Model: S1

1. INTRODUCTION

This manual provides essential instructions for the safe and efficient operation, maintenance, and troubleshooting of your Ultenic S1 Pool Skimmer Robot. Please read this manual thoroughly before using the device and retain it for future reference.

The Ultenic S1 is designed to automatically remove surface debris such as leaves, twigs, petals, and insects from your swimming pool, ensuring cleaner water with minimal effort.

2. SAFETY INFORMATION

WARNING: Always follow basic safety precautions when using electrical appliances, especially near water.

- Read all instructions before use.
- Do not operate the skimmer if it or the power adapter is damaged.
- Keep children and pets away from the pool area while the skimmer is operating.
- Ensure the skimmer is fully charged before initial use.
- Only use the provided power adapter for DC charging.
- Disconnect the skimmer from the power source before cleaning or performing maintenance.
- Do not attempt to repair the skimmer yourself. Contact customer support for assistance.
- Avoid submerging the remote control in water.

3. PACKAGE CONTENTS

Verify that all items listed below are included in your package:

Pool Shape? No Problem!

Engineered for the Pool You ACTUALLY Have
Pool Shape? No Problem!



Image: All components of the Ultenic S1 Pool Skimmer Robot package, including the main unit, wheels, filter basket, remote control, propellers, anti-stranding bars, power adapter, anti-stuck foam noodle, user manual, and quick start guide.

1. Skimmer S1 (1 unit)
2. Wheels (2 units)
3. Filter Basket (1 unit)
4. Remote Control (1 unit)
5. Propellers (2 units)
6. Anti-stranding Bars (4 units)
7. Power Adapter (1 unit)
8. Anti-Stuck Foam Noodle (1 unit)
9. User Manual (1 unit)
10. Quick Start Guide (1 unit)

4. PRODUCT OVERVIEW

The Ultenic S1 Pool Skimmer Robot is designed for efficient surface cleaning of various pool types. It features

a solar panel for continuous charging, a large debris capacity, and an auto-docking system.



Image: The Ultenic S1 Pool Skimmer Robot shown from an elevated angle, highlighting its solar panel, main body, and the included remote control.

Key Features:

- **Dual-Action Brushes and Powerful Suction:** Captures debris as small as 0.2mm.
- **Dual-Power Flexibility:** Solar charging for sunny days and DC charging for cloudy days, providing 15+ hours of continuous operation.
- **Smart Auto-Docking System:** Returns to the poolside automatically when manually activated or when battery is low.
- **Double Protection System:** Includes a pre-installed foam guard to prevent suction port clogs and stabilizer legs with tilt sensors to avoid stranding.
- **6L Debris Capacity:** Large capacity debris tank for extended cleaning cycles.
- **Built-in Chlorine Tablet Dispenser:** Allows for customized water quality management.
- **Versatile Pool Compatibility:** Suitable for above-ground and in-ground pools of various shapes (round, square, irregular) and surfaces (tile, vinyl, concrete).

5. SETUP AND CHARGING

5.1 Assembly

The Ultenic S1 requires minimal assembly. Refer to the Quick Start Guide for detailed visual instructions on attaching the wheels, propellers, and anti-stranding bars.

5.2 Initial Charging

Before first use, ensure the skimmer is fully charged. The Ultenic S1 offers dual charging options:

- **Solar Charging:** Place the skimmer in direct sunlight. The integrated solar panel will charge the device, extending its runtime. Solar charging efficiency varies with sunlight intensity and weather conditions.
- **DC Charging:** For faster charging or during cloudy conditions, use the provided power adapter. Connect the adapter to the skimmer's charging port and plug it into a standard electrical outlet. A full charge typically takes 4 hours.

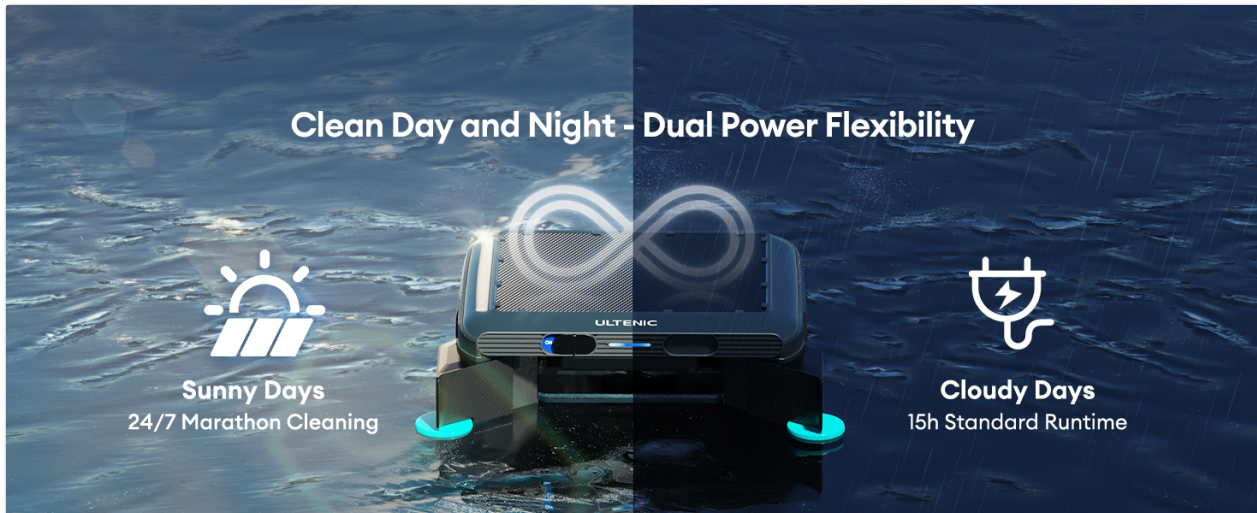


Image: Illustration depicting the dual power flexibility of the Ultenic S1, showing solar charging for continuous operation in sunlight and DC charging for a standard 15-hour runtime.

5.3 Placement in Pool

Gently place the Ultenic S1 onto the surface of your pool. Ensure it floats freely and is not obstructed by pool edges or other equipment.

6. OPERATING INSTRUCTIONS

6.1 Powering On/Off

Press the power button on the skimmer or the remote control to turn the device on or off. The skimmer will begin its cleaning cycle automatically once powered on.

6.2 Remote Control Functions

The included remote control allows for manual operation and control of specific features:

- **Start/Pause:** Initiates or pauses the cleaning cycle.
- **Direction Keys:** Manually steer the skimmer.
- **Dock Keys:** Activates the auto-docking feature, guiding the skimmer to the poolside for easy retrieval.
- **Re-pairing Key:** Used to re-establish connection between the remote and the skimmer if needed.



Image: The Ultenic S1 Pool Skimmer Robot approaching the pool edge, demonstrating its auto-docking feature. The remote control is shown with labeled buttons for re-pairing, direction, start/pause, and dock functions.

6.3 Auto-Docking System

The skimmer is equipped with an intelligent auto-docking system. When the battery level is low or the dock button on the remote is pressed, the skimmer will automatically navigate to the nearest poolside for convenient retrieval.



Image: The Ultenic S1 Pool Skimmer Robot automatically moving towards a designated docking point at the edge of a swimming pool.

6.4 Chlorine Tablet Dispenser

The Ultenic S1 includes a built-in dispenser for chlorine tablets. Open the dispenser compartment, insert standard 3-inch chlorine pucks, and close securely. This allows for simultaneous cleaning and water treatment.

Chlorine Tablet Dispenser

Built-in Smart Chlorination System

Compatible with standard 3" chlorine pucks, our built-in dispenser lets you control over your water quality with ease—no extra equipment needed.

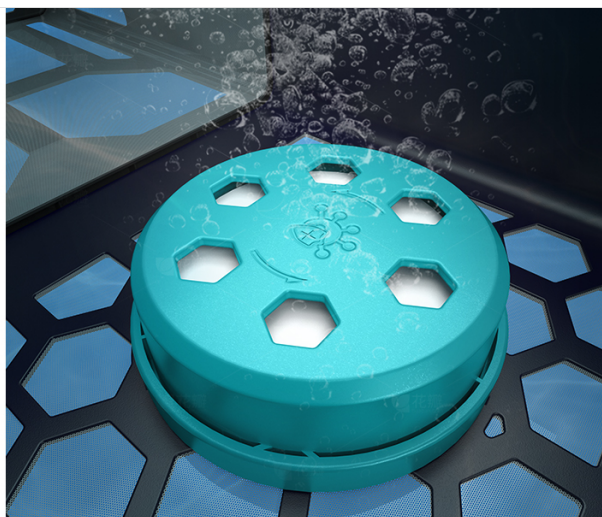


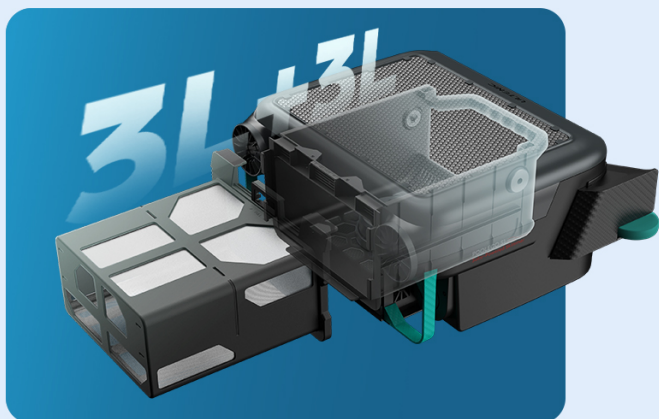
Image: A close-up view of the Ultenic S1's built-in chlorine tablet dispenser, showing its design and several chlorine tablets.

7. MAINTENANCE

Regular maintenance ensures optimal performance and longevity of your Ultenic S1 Pool Skimmer Robot.

7.1 Cleaning the Debris Tank

The skimmer features a 6L debris tank. When full, or after each cleaning cycle, remove the tank from the skimmer. Discard collected debris.



6L Massive Capacity

Twice the Capacity, Half the Size

Our innovative 3L+3L dual-tank design packs twice the capacity into a body smaller than a carry-on suitcase—weighing less than 3kg for effortless portability without sacrificing performance.

Image: An illustration showing the Ultenic S1's 6L debris tank, emphasizing its large capacity and compact design.

7.2 Rinse and Air-Dry

After emptying, rinse the debris tank and filter basket thoroughly with a water hose. Allow all components to air-dry completely before reassembling and storing the skimmer. This prevents mold and mildew buildup.

Rinse & Go Maintenance

Just disassemble, rinse with a hose, and sun-dry – Now maintaining your cleaner is easier than washing dishes!



Image: A person rinsing the debris basket of the Ultenic S1 Pool Skimmer Robot with a garden hose, demonstrating the "Rinse & Go" maintenance process.

7.3 Foam Guard Maintenance

The pre-installed foam guard helps prevent suction port clogs. Periodically inspect the foam guard for debris accumulation and clean as necessary to maintain optimal suction.

8. TROUBLESHOOTING

If you encounter issues with your Ultenic S1, refer to the following common problems and solutions:

Problem	Possible Cause	Solution
Skimmer does not power on.	Low battery; power button not pressed correctly.	Charge the skimmer using the DC adapter or place it in direct sunlight. Ensure the power button is pressed firmly.
Skimmer is not moving or moving in circles.	Obstruction in propellers; motor malfunction; low battery.	Check propellers for debris and clear any obstructions. Ensure the battery is sufficiently charged. If the issue persists, contact customer support.
Poor cleaning performance.	Full debris tank; clogged foam guard; weak suction.	Empty and clean the debris tank and filter basket. Inspect and clean the foam guard.
Skimmer gets stuck on pool steps or shallow areas.	Obstruction; specific pool design.	The skimmer has an anti-stranding design with stabilizer legs and tilt sensors. Ensure these are clear. If issues persist, manually guide it away from problem areas using the remote.
Remote control not responding.	Low remote battery; loss of pairing.	Replace AAA batteries in the remote. Use the re-pairing key to re-establish connection.

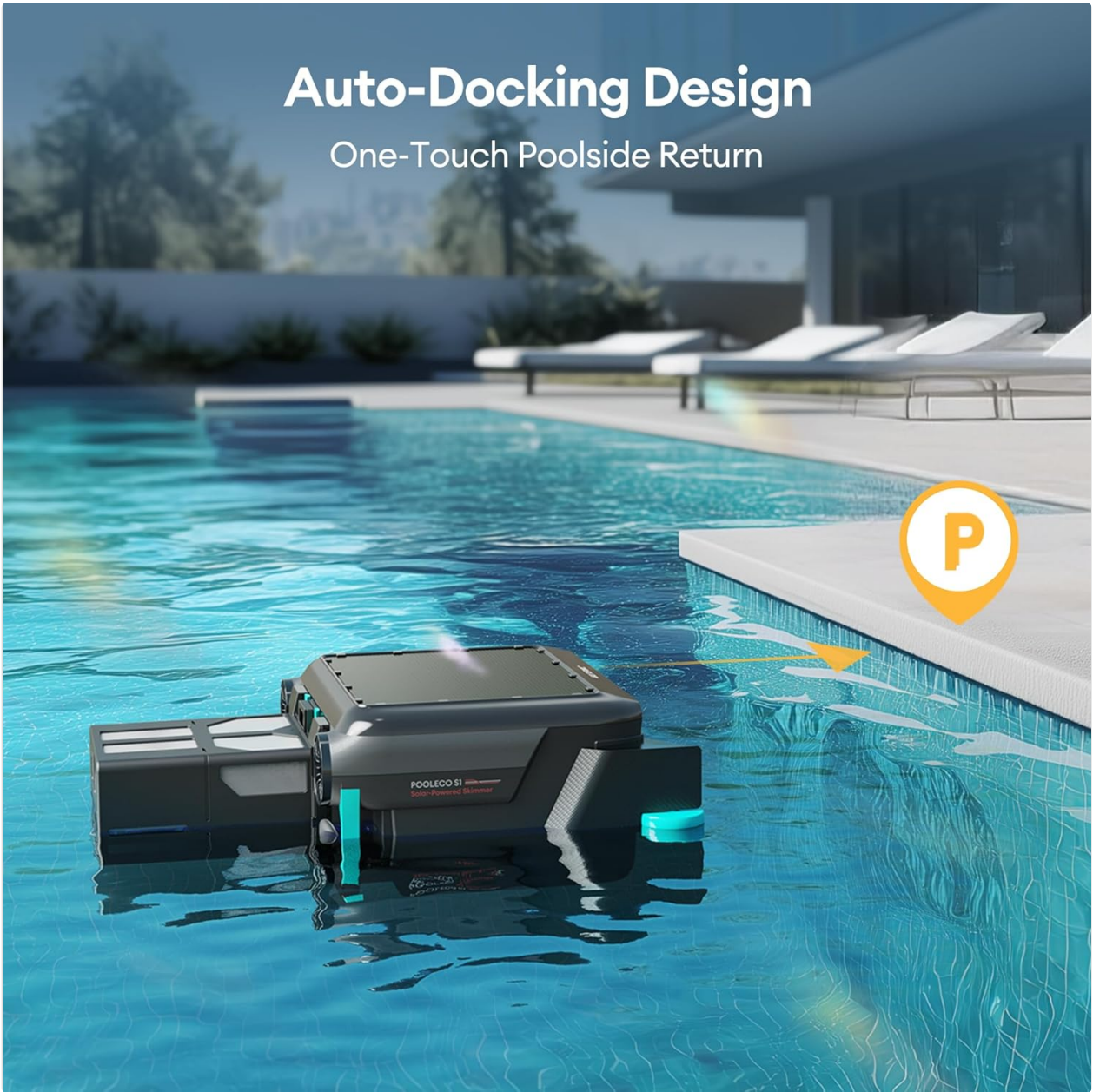


Image: The underside of the Ultenic S1 Pool Skimmer Robot, illustrating its anti-stranding design with stabilizer legs to prevent it from getting trapped on pool steps or shallow edges.

9. SPECIFICATIONS







Feature	Detail
Model Name	S1
Brand	Ultenic
Power Source	Battery Powered (Solar & DC Charging)
Battery Type	Lithium-Ion
Lithium Battery Voltage	7.1 Volts

Feature	Detail
Lithium Battery Energy Content	5100 Milliampere Hour (mAh)
Charging Time	4 Hours (DC Charging)
Capacity (Debris Tank)	6 Liters
Control Method	Remote Control
Product Dimensions (L x W x H)	13.7 x 10.96 x 6.34 inches
Item Weight	8.53 pounds
Material	PC+ABS
Color	Kelly Green
Special Features	Effortless cleaning, 6L debris capacity, Quiet operation, Weatherproof, Auto-Docking, Dual Protection System, Built-in Chlorine Tablet Dispenser

10. WARRANTY AND SUPPORT

For warranty information, technical support, or any questions not covered in this manual, please contact Ultenic customer service. Refer to the official Ultenic website or your purchase documentation for contact details.

Please have your model number (S1) and purchase date available when contacting support.

	<p>Ultenic Pooleco S1 Solar Pool Skimmer User Manual</p> <p>Comprehensive user manual for the Ultenic Pooleco S1 Solar Pool Skimmer, detailing safety instructions, product components, assembly, operation, charging, maintenance, and troubleshooting.</p>
	<p>Ultenic Pooleco S1 Solar Pool Skimmer User Manual</p> <p>Comprehensive user manual for the Ultenic Pooleco S1 Solar Pool Skimmer, covering safety guidelines, product components, assembly, charging methods, operation, maintenance procedures, and troubleshooting tips.</p>
	<p>Ultenic Pooleco S1 Solar Pool Skimmer User Manual</p> <p>Comprehensive user manual for the Ultenic Pooleco S1 Solar Pool Skimmer, covering safety instructions, setup, operation, maintenance, and troubleshooting.</p>
	<p>Ultenic Pooleco 10S Robotic Pool Cleaner User Manual</p> <p>User manual for the Ultenic Pooleco 10S robotic pool cleaner, covering product overview, operation, maintenance, and troubleshooting. Learn how to register your warranty for extended benefits.</p>
	<p>Ultenic Pooleco S1 Solar Pool Skimmer - Manual de Usuario</p> <p>Manual de usuario completo para el Ultenic Pooleco S1, un skimmer solar automático para piscinas. Incluye instrucciones de seguridad, montaje, uso, mantenimiento y solución de problemas.</p>
	<p>Ultenic T10 Robot Vacuum Cleaner User Manual</p> <p>Comprehensive user manual for the Ultenic T10 robot vacuum cleaner, covering safety instructions, setup, operation, maintenance, troubleshooting, and product specifications. Learn how to use your Ultenic T10 for efficient home cleaning.</p>
