

ganopterygon G128

ganopterygon G128 Smart Watch User Manual

Your Guide to a Healthier, More Connected Lifestyle

1. INTRODUCTION

Thank you for choosing the ganopterygon G128 Smart Watch. This device is designed to enhance your daily life with its advanced features, including a vibrant HD display, comprehensive health monitoring, extensive sports modes, and convenient Bluetooth calling. This manual provides detailed instructions to help you set up, operate, and maintain your new smartwatch.



Figure 1.1: ganopterygon G128 Smart Watch

2. WHAT'S IN THE BOX

Upon unboxing your ganopterygon G128 Smart Watch, please verify that all components are present:

- Smart Watch (x1)
- Silicone Strap (x1)
- Magnetic Charging Cable (x1)
- User Manual (x1)



Figure 2.1: Package Contents and Watch Dimensions

3. SETUP GUIDE

3.1 Charging the Smart Watch

Before first use, fully charge your G128 Smart Watch. Connect the magnetic charging cable to the charging points on the back of the watch and plug the USB end into a standard USB power adapter (not included).

- **Charging Time:** Approximately 2.5 hours for a full charge.
- **Battery Life:** Up to 7 days with normal use, 25 days standby. A 20-minute charge can provide 24 hours of usage.



Figure 3.1: Charging and Battery Life

3.2 App Installation and Pairing

To unlock the full potential of your G128 Smart Watch, download and connect it with the companion app on your smartphone.

1. **Download the App:** Scan the QR code in the manual or search for "Da Fit" in your phone's app store (Google Play Store for Android, Apple App Store for iOS).
2. **Enable Bluetooth:** Ensure Bluetooth is enabled on your smartphone.
3. **Open Da Fit App:** Launch the app and follow the on-screen instructions to create an account or log in.

4. **Add Device:** In the app, navigate to the device section and select "Add Device" or "Bind Device".
5. **Find G128:** The app will scan for nearby devices. Select "G128" from the list.
6. **Pair:** A Bluetooth pairing request will appear on your phone. Confirm the pairing.
7. **Sync Data:** Once paired, the watch will sync with your phone, allowing you to receive notifications and track data.

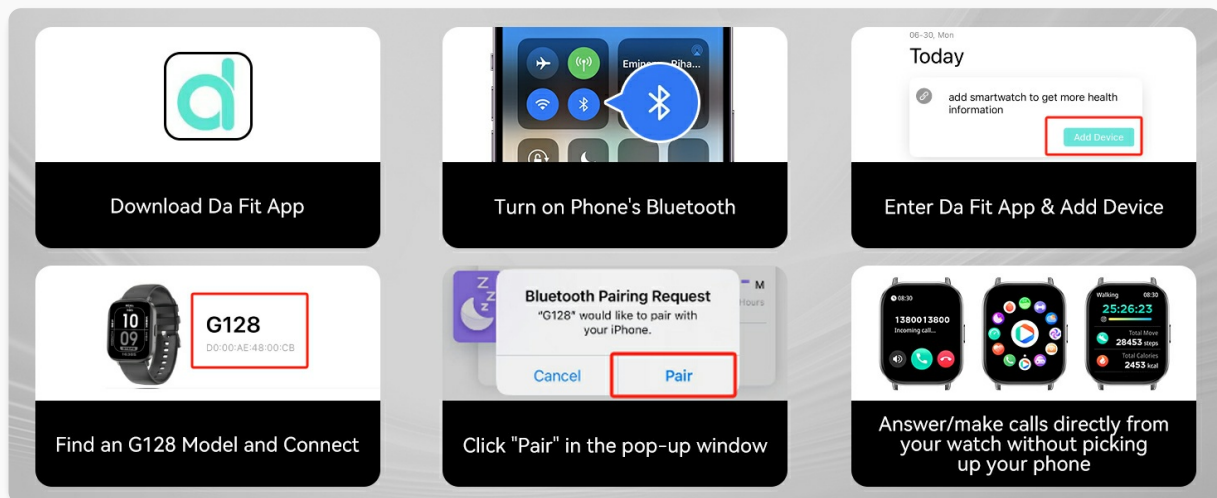


Figure 3.2: App Installation and Pairing Steps

4. OPERATING INSTRUCTIONS

4.1 Display and Customization

The G128 Smart Watch features a 2.01-inch HD touchscreen display. You can customize the watch face to suit your style and preferences through the Da Fit app.

- **Navigation:** Swipe left/right, up/down to access different functions and menus. Tap to select.
- **Watch Faces:** Choose from a variety of built-in watch faces or download more from the app's watch face market. You can even set a custom photo as your watch face.



Figure 4.1: 2.01" HD Touch Screen and Customization

4.2 Bluetooth Calling

With Bluetooth 5.3, the G128 Smart Watch allows you to answer and make calls directly from your wrist, freeing your hands.

- **Answering Calls:** When a call comes in, tap the green phone icon on the watch screen.
- **Making Calls:** Access the dial pad or contacts list on your watch to initiate a call.



Figure 4.2: Answer/Make Bluetooth Calls

4.3 Smart Notifications and Voice Assistant

Stay connected with real-time notifications and control your watch with voice commands.

- **Message Sync:** Receive instant notifications for calls, SMS, and social media apps (Facebook, WhatsApp, Instagram, etc.). **Note:** The watch displays alerts only and does not support message replies.
- **Voice Assistant:** Use the built-in voice assistant to set alarms, check weather, and perform other tasks hands-free.

Voice Assistant & Message Notification

Don't let you miss important messages
(does not support reply)



Figure 4.3: Voice Assistant & Message Notification

4.4 Sports Modes

The G128 Smart Watch supports over 120 professional sports modes, accurately tracking your activity data.

- **Activity Tracking:** Monitors steps, distance, calories burned, and performance metrics.
- **GPS Tracking:** Utilizes your smartphone's GPS to map routes during outdoor activities.

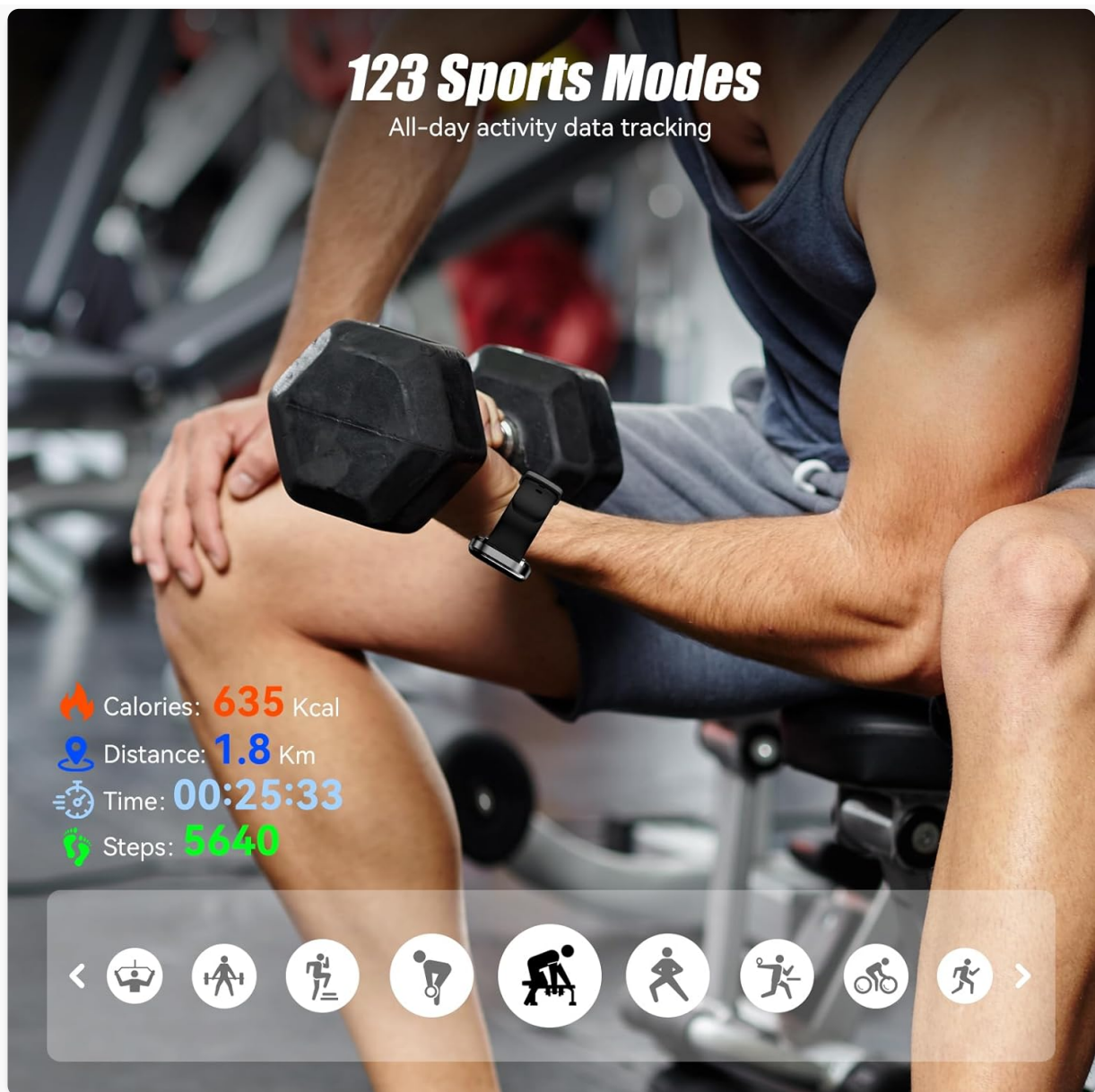


Figure 4.4: 120+ Sports Modes

4.5 Precision Health Monitoring

Utilize advanced optical sensors for 24/7 health insights.

- **Heart Rate Monitoring:** Tracks your heart rate continuously throughout the day.
- **Sleep Monitoring:** Analyzes your sleep stages (Deep/Light/REM) to help you understand your sleep patterns.
- **Women's Health:** Provides menstrual cycle tracking.



Figure 4.5: 24 Hour Health Management

4.6 Other Practical Functions

The G128 Smart Watch offers a range of additional features for convenience:

- **Weather Forecasts:** Get real-time weather updates.
- **Music Playback Control:** Control music on your phone directly from your watch.
- **Phone Camera Remote:** Use your watch as a remote shutter for your phone's camera.
- **Sedentary Reminders:** Get alerts to move after periods of inactivity.
- **Alarm Clock:** Set alarms directly on your watch.
- **Calculator:** Perform basic calculations.
- **Find Phone:** Locate your misplaced phone by making it ring.
- **Breathing Training:** Guided breathing exercises for relaxation.
- **Games:** Enjoy simple games directly on your watch.



Figure 4.6: Multiple Practical Functions

5. MAINTENANCE

5.1 Water Resistance

The G128 Smart Watch has an IP67 waterproof rating. This means it can withstand daily activities such as washing hands, sweating, and splashes from rain. It is suitable for light water exposure.

- **Do NOT immerse in water:** Avoid prolonged submersion, swimming, or showering with the watch.
- **No Sauna:** Do not expose the watch to hot water, steam, or high humidity environments like saunas.



Figure 5.1: IP67 Waterproof Rating Guidelines

5.2 Cleaning and Care

- Wipe the watch and strap regularly with a soft, dry cloth.
- If necessary, use a slightly damp cloth to clean, then dry thoroughly.
- Avoid using harsh chemicals, cleaning solvents, or strong detergents.
- Keep the charging contacts clean and dry to ensure proper charging.

6. TROUBLESHOOTING

If you encounter issues with your G128 Smart Watch, please refer to the following common solutions:

Problem	Possible Solution
Watch does not turn on	Ensure the watch is fully charged. Connect to the charger for at least 30 minutes.
Cannot pair with phone	Ensure Bluetooth is enabled on your phone. Restart both the watch and phone. Make sure the Da Fit app is open and searching for devices. Forget the device in your phone's Bluetooth settings and try pairing again.
No notifications received	Check app notification permissions on your phone. Ensure the Da Fit app is running in the background. Disable 'Do Not Disturb' mode on both the watch and phone.
Inaccurate health data	Ensure the watch is worn snugly on your wrist, not too loose or too tight. Clean the sensor on the back of the watch.
Short battery life	Reduce screen brightness. Turn off unnecessary features like continuous heart rate monitoring if not needed. Limit frequent screen wake-ups.

7. SPECIFICATIONS

Feature	Detail
---------	--------

Feature	Detail
Model Number	G128
Screen Size	2.01 Inches (5 cm visible diagonal)
Connectivity	Bluetooth 5.3
Battery Capacity	300 mAh (Lithium Polymer)
Battery Life	7 days (normal use), 25 days (standby)
Charging Time	Approx. 2.5 hours
Water Resistance	IP67
Operating System	Android (compatible with Android 6.0+), iOS (compatible with iOS 10.0+)
Item Weight	1.76 ounces (50 Grams)
Special Features	Time Display, Multisport Tracker, Weather Forecast, Activity Tracker, Heart Rate Monitor, Bluetooth Calling, Voice Assistant


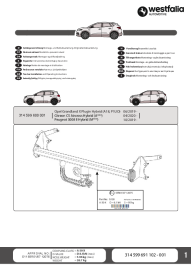


8. WARRANTY AND SUPPORT

ganopterygon is committed to providing high-quality products and excellent customer service.

- **Lifetime Support:** We offer lifetime technical support and solutions for our products.
- **2-Year Replacement:** Enjoy a 2-year free replacement warranty for manufacturing defects.
- **24-Hour After-sales Service:** Our customer service team is available to assist you with any inquiries or issues.

Figure 8.1: Customer Support Information

For further assistance, please contact ganopterygon customer support through the contact information provided on our official website or your purchase platform.

	<p>A8 Wireless Earbuds User Manual - Bluetooth 5.3 Headphones</p> <p>User manual for A8 Wireless Earbuds with Bluetooth 5.3, HD Mic, IPX7 Waterproof, and LED Power Display. Covers setup, pairing, touch controls, basic parameters, maintenance, and safety instructions.</p>
	<p>Dingchang Dianzi DC-G128-V2.1 Product Specification</p> <p>Detailed technical specifications, features, and interface definitions for the Dingchang Dianzi DC-G128-V2.1 embedded system board. This document covers electrical performance, product overview, hardware specifications, and usage precautions.</p>
	<p>Westfalia Tow Bar Installation Guide for Opel Grandland X, Citroen C5 Aircross, Peugeot 3008</p> <p>Comprehensive installation manual for Westfalia tow bars, detailing the process for Opel Grandland X Plugin Hybrid, Citroen C5 Aircross Hybrid, and Peugeot 3008 II Hybrid vehicles. Includes safety guidelines, part lists, torque specifications, and step-by-step visual instructions.</p>
	<p>weiwo intelligent Smartwatch Catalog: Cost-Effective & High-End BT Calling Series</p> <p>Comprehensive catalog of weiwo intelligent smartwatches from Shenzhen Woxin Technology Co., Ltd., featuring cost-effective and high-end BT calling series with detailed specifications on display, chip, battery, functions, and more.</p>
	<p>WindNet® PRO Upgrade: Maintain Control Over Your Wind Farm</p> <p>Optimize operational performance and wind asset management for your wind farm with Siemens Gamesa's WindNet® PRO Upgrade. Enhance cybersecurity, reduce breakdown risks, and ensure grid compliance.</p>