

[manuals.plus](#) /

› [VILTROX](#) /

› [VILTROX DC-A1 7-Inch Video Field Monitor User Manual](#)

VILTROX DC-A1

VILTROX DC-A1 7-Inch Video Field Monitor User Manual

Model: DC-A1 | Brand: VILTROX

INTRODUCTION

The VILTROX DC-A1 is a high-brightness 7-inch video field monitor designed for professional filmmakers and content creators. Featuring a 2800nit ultra-high brightness display, 1920x1080 Full HD resolution, and 4K 60Hz HDMI input/output, it provides clear and accurate monitoring in various shooting conditions. This manual provides detailed instructions for setting up, operating, and maintaining your DC-A1 monitor.



Figure 1: VILTROX DC-A1 monitor in use, mounted on a camera.

What's in the Box

Please check the contents of your package to ensure all items are present:

- DC-A1 Monitor
- Sun Hood
- Standard Desk Bracket
- HDMI Cable
- USB-C Cable
- Power Adapter
- Warranty Card
- Screen Protector
- Cleaning Cloth



Figure 2: Included accessories with the VILTROX DC-A1 monitor.

SETUP

1. Mounting the Monitor

The DC-A1 monitor can be mounted to a camera rig or tripod using its standard mounting points. Ensure the mount is secure to prevent accidental drops.

2. Power Options

The monitor offers flexible power options:

- **NP-F Batteries:** Insert a compatible NP-F series battery into the battery slot on the rear of the monitor.
- **DC-in:** Connect the provided power adapter to the DC-in port (10-18V/2A).
- **USB-C:** Power the monitor via the USB-C port ($\geq 9V/3A$).



Figure 3: Rear of the monitor with battery and power input options.

3. Connectivity (HDMI)

Connect your camera or video source to the monitor using the HDMI IN port. You can also loop out the signal to another device via the HDMI OUT port. The monitor supports 4K video transmission at 60Hz.

4K HDMI In/Out (3840x2160 60P)



Figure 4: HDMI input and output ports on the DC-A1 monitor.

4. Attaching the Sun Hood

For optimal visibility in bright outdoor conditions, attach the provided detachable sun hood to the monitor. This helps to reduce glare and improve screen clarity.

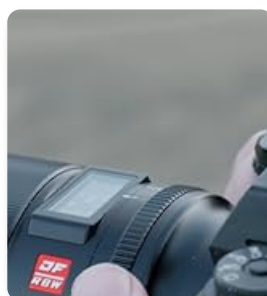


Figure 5: Attaching the sun hood for improved outdoor visibility.

1. Power On/Off

Locate the power button on the side of the monitor. Press and hold to power on or off. A green indicator light will confirm the power status.

2. Touchscreen Control

The DC-A1 features an intuitive touchscreen interface for easy navigation and control of settings. Tap to select options, swipe to navigate menus, and pinch-to-zoom for image inspection.

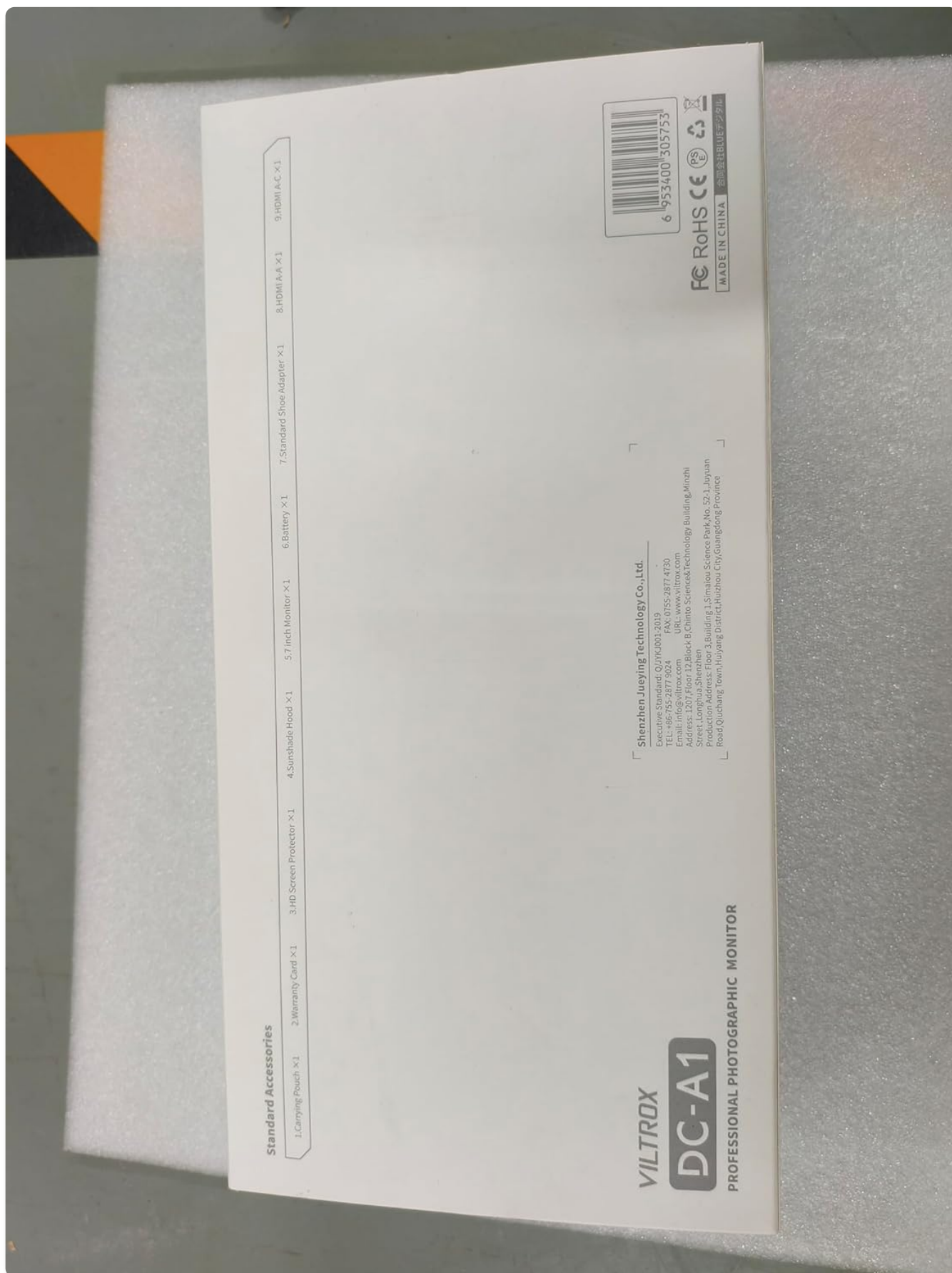


Figure 6: Adjusting settings via the responsive touchscreen.

3. Custom Function Buttons (F1-F4)

Four customizable function buttons (F1-F4) are available for quick access to frequently used monitoring features. These can be configured in the monitor's settings menu.



Figure 7: Custom function buttons for quick access to features.

4. Professional Monitoring Tools

The DC-A1 includes a suite of professional monitoring tools to assist with accurate exposure and focus:

- **Brightness Histogram:** Visual representation of image brightness distribution.
- **RGB Histogram:** Displays the distribution of red, green, and blue color channels.
- **YUV Parade Waveform:** Shows luminance (Y) and chrominance (U, V) levels across the image.
- **Focus Peaking:** Highlights in-focus areas for precise focusing.
- **Zebras:** Indicates overexposed areas with striped patterns.
- **3D LUTs Application:** Import and apply custom 3D Look-Up Tables for accurate color grading and preview.



Figure 8: Advanced monitoring functions for precise control.

5. Intelligent Temperature Control

The DC-A1 features a built-in auto fan system for intelligent temperature control, ensuring stable and reliable operation during extended use, even in demanding environments.

Built-in Automatic Fan Cooling



Figure 9: Integrated cooling fans for optimal performance.

6. Product Overview Video

Your browser does not support the video tag.

Video 1: An official overview of the VILTROX DC-A1 monitor, showcasing its features and applications in various shooting scenarios.

MAINTENANCE

To ensure the longevity and optimal performance of your VILTROX DC-A1 monitor, follow these maintenance guidelines:

- **Cleaning:** Use a soft, lint-free cloth to clean the screen and body. For stubborn smudges, a screen-specific cleaning solution can be used sparingly. Avoid abrasive materials or harsh chemicals.
- **Storage:** When not in use, store the monitor in a dry, dust-free environment, preferably in its original packaging or a protective case.
- **Battery Care:** If using NP-F batteries, ensure they are charged regularly and stored in a cool, dry place. Remove batteries if the monitor will not be used for an extended period.

- **Avoid Extreme Conditions:** Do not expose the monitor to extreme temperatures, high humidity, or direct sunlight for prolonged periods, as this can damage internal components.

TROUBLESHOOTING

If you encounter issues with your DC-A1 monitor, refer to the following common troubleshooting steps:

- **No Power:** Ensure the battery is charged and correctly inserted, or that the power adapter/USB-C cable is securely connected and providing sufficient power.
- **No Signal:** Check all HDMI cable connections. Ensure the camera or video source is powered on and outputting a signal. Try a different HDMI cable or port if available.
- **Screen Flickering/Distortion:** Verify the input signal resolution and refresh rate are compatible with the monitor. Try restarting both the monitor and the connected device.
- **Touchscreen Unresponsive:** Power cycle the monitor. Ensure the screen is clean and free from debris.
- **Overheating:** Ensure the cooling fan vents are not obstructed. Operate the monitor in a well-ventilated area. The intelligent temperature control system should manage heat effectively.

If problems persist, please contact VILTROX customer support for further assistance.

SPECIFICATIONS

Feature	Specification
Product Dimensions	7.39 x 4.35 x 1.12 inches
Item Weight	12.3 ounces
Item Model Number	DC-A1
Standing Screen Display Size	7 Inches
Resolution	1920 x 1080 (FHD 1080p)
Image Brightness	2800 nits
Aspect Ratio	16:9
Image Contrast Ratio	1000:1
Viewing Angle	170° Wide Angle
HDMI Transmission	4K 60Hz
Power Options	NP-F batteries, DC (10-18V/2A), USB-C (≥9V/3A)
Manufacturer	Shenzhen Jueying Technology Co., Ltd.

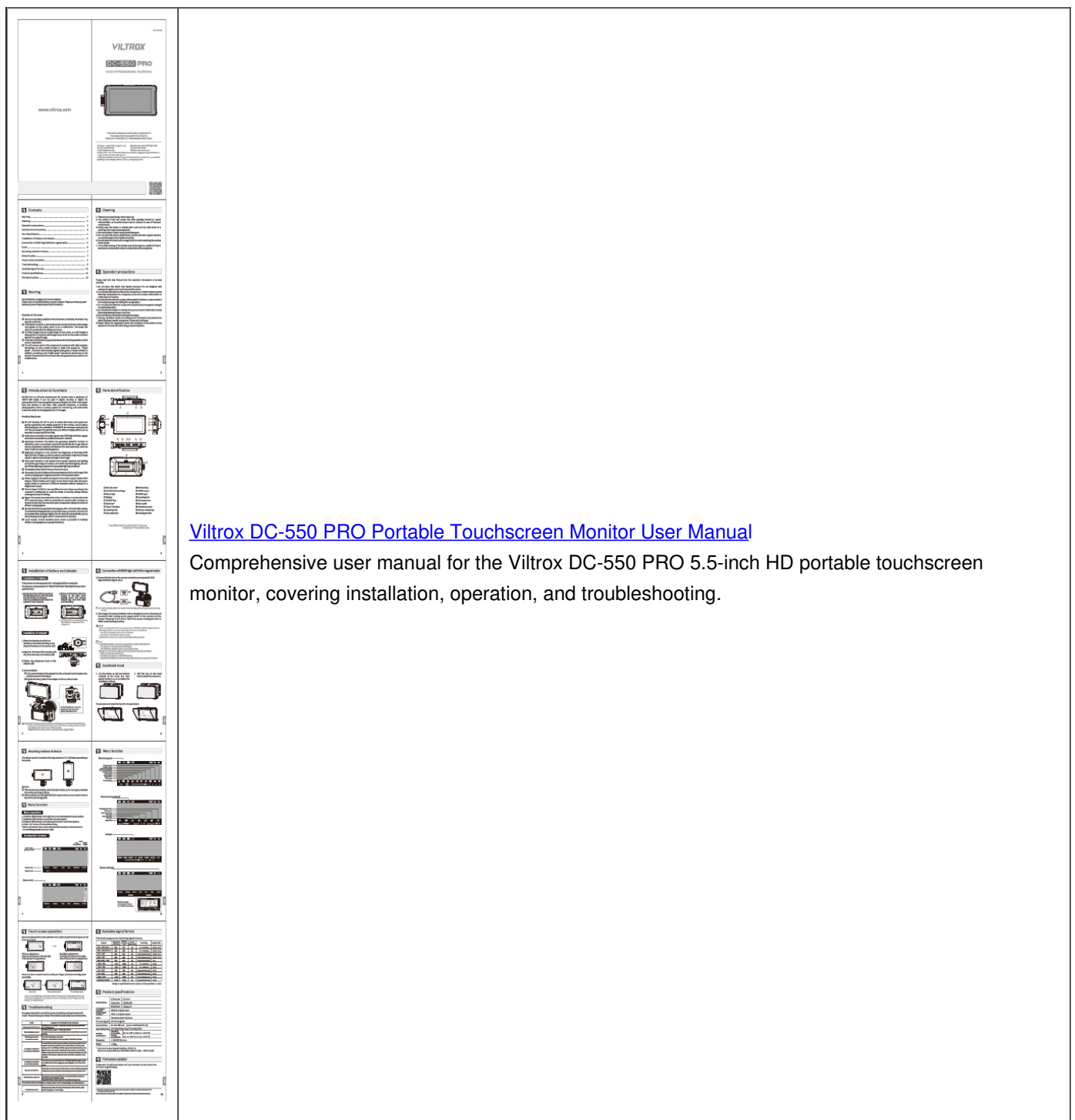
WARRANTY AND SUPPORT

The VILTROX DC-A1 monitor comes with a standard manufacturer's warranty. For specific warranty terms and conditions, please refer to the warranty card included in your package or visit the official VILTROX website. For technical support, product inquiries, or service requests, please contact VILTROX customer service.

VILTROX Official Store: [Visit Store](#)

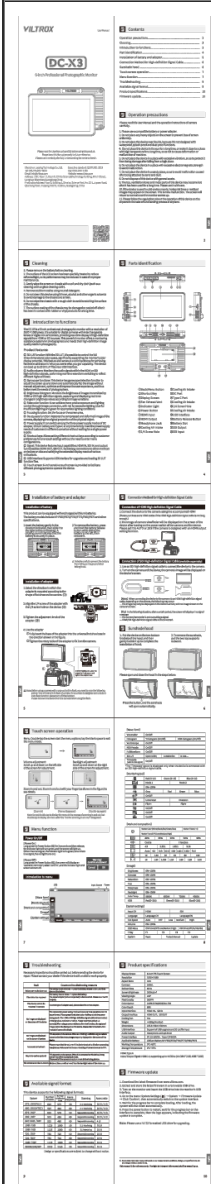
Related Documents - DC-A1

	<p>Viltrox DC-550 Pro 5.5-inch Touchscreen HD Monitor User Manual</p> <p>This user manual provides detailed instructions for the Viltrox DC-550 Pro, a 5.5-inch touchscreen HD monitor with a resolution of 1920x1080 pixels. It covers features, operation, installation, troubleshooting, and specifications for professional photography and videography.</p>
	<p>Viltrox DC-550 PRO 5.5-inch HD Portable Touchscreen Monitor User Manual</p> <p>This user manual provides detailed instructions for the Viltrox DC-550 PRO, a 5.5-inch HD portable touchscreen monitor. Learn about its features, setup, operation, menu functions, troubleshooting, and specifications.</p>



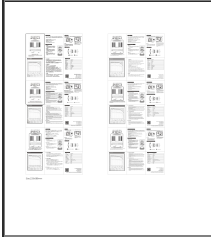
[Viltrox DC-550 PRO Portable Touchscreen Monitor User Manual](#)

Comprehensive user manual for the Viltrox DC-550 PRO 5.5-inch HD portable touchscreen monitor, covering installation, operation, and troubleshooting.



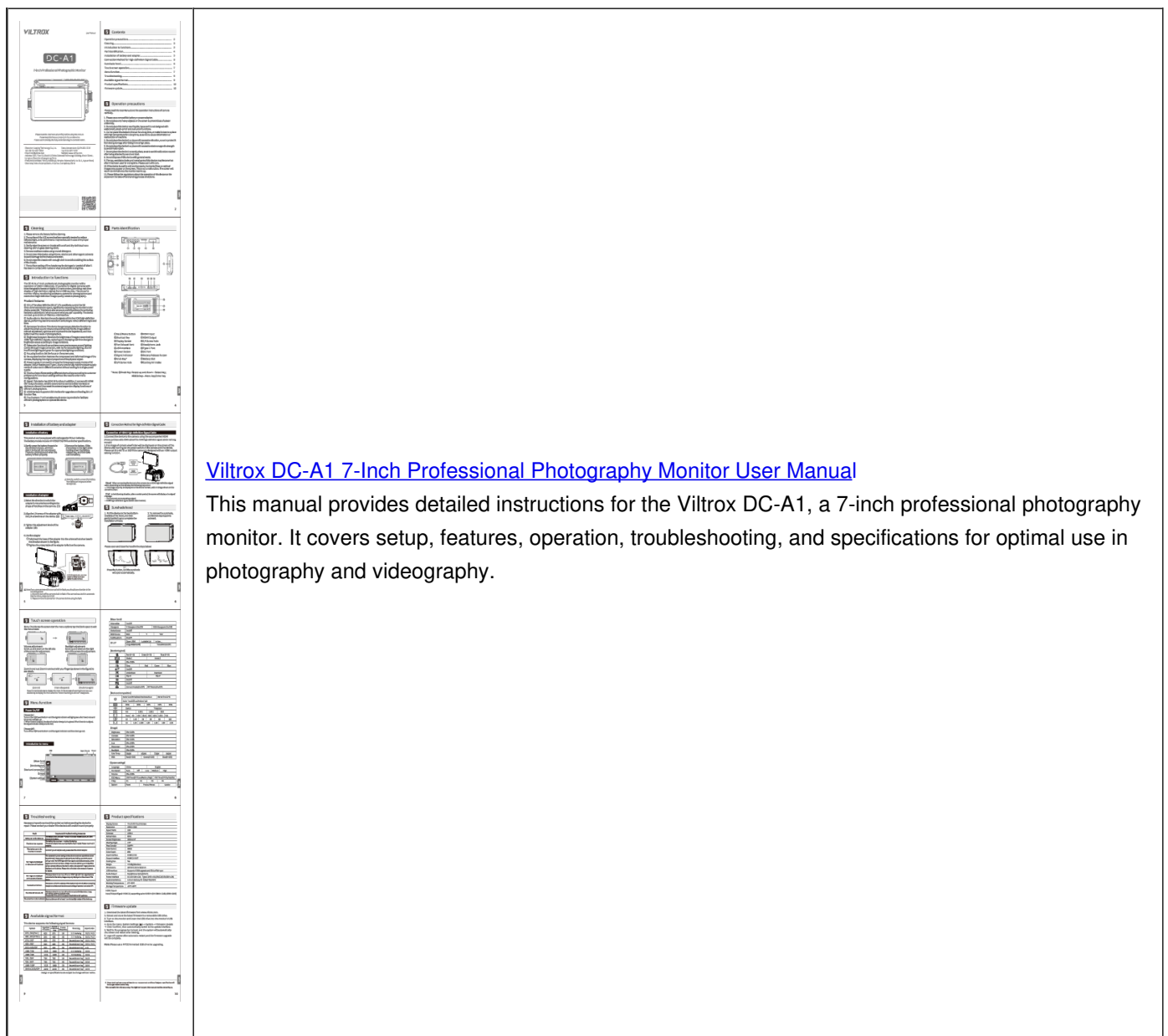
[Viltrox DC-X3 Camera Accessory User Manual](#)

Official user manual for the Viltrox DC-X3 camera accessory, providing comprehensive instructions, specifications, features, and troubleshooting guidance for optimal use.



[Viltrox AF 23mm f/1.4 XF and Z Mount Camera Lens Specifications](#)

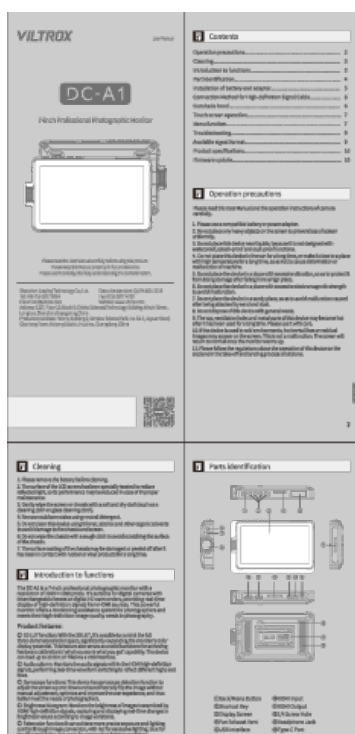
Comprehensive technical specifications, features, and performance data for the Viltrox AF 23mm f/1.4 camera lenses designed for Fujifilm X and Nikon Z mounts, including MTF charts and optical design details.

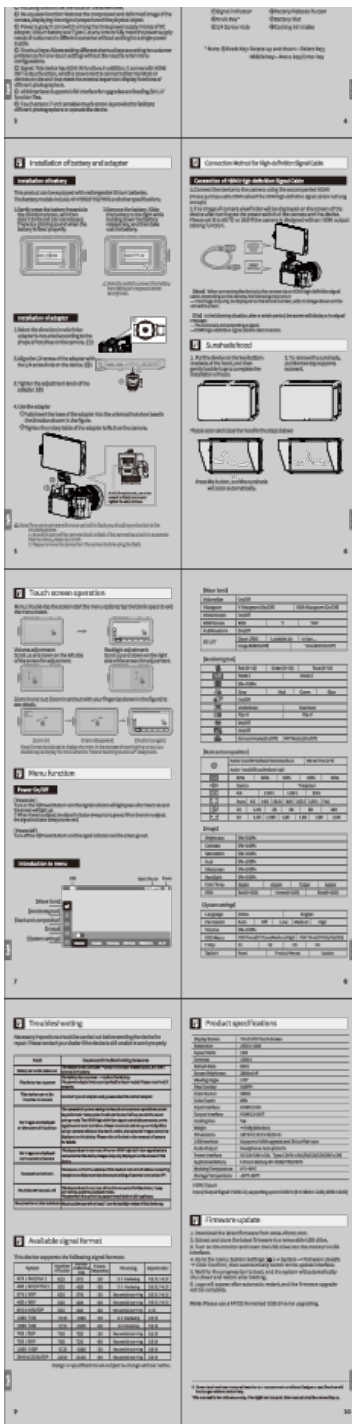


[Viltrox DC-A1 7-Inch Professional Photography Monitor User Manual](#)

This manual provides detailed instructions for the Viltrox DC-A1, a 7-inch professional photography monitor. It covers setup, features, operation, troubleshooting, and specifications for optimal use in photography and videography.

Documents - VILTROX – DC-A1

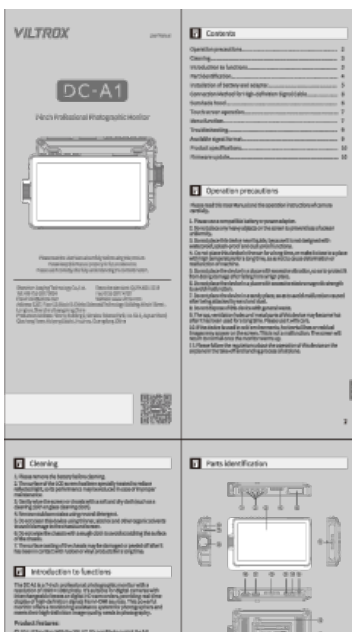


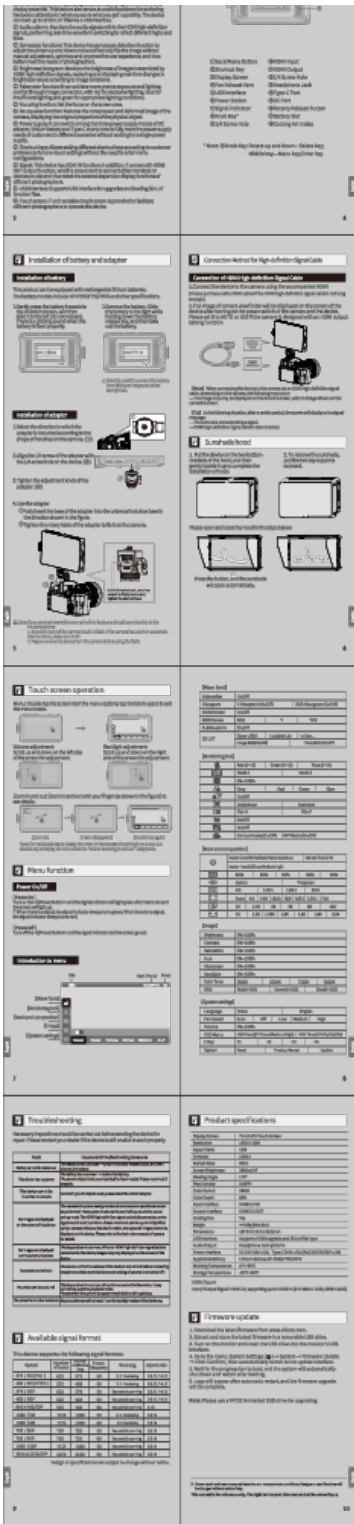


[Viltrox DC-A1 7-Inch Professional Photography Monitor User Manual](#)

This manual provides detailed instructions for the Viltrox DC-A1, a 7-inch professional photography monitor. It covers setup, features, operation, troubleshooting, and specifications for optimal use in photography and videography.

lang: score:20 filesize: 17.82 M page_count: 6 document date: 2025-07-04



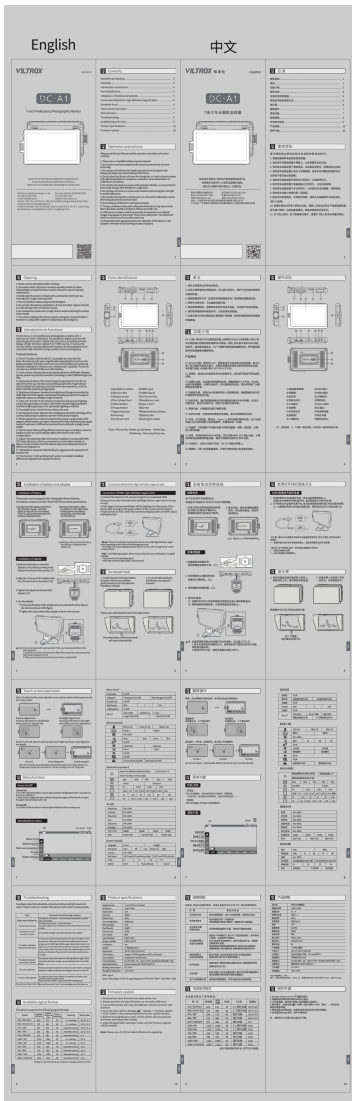


[pdf] User Manual

DC A1 V2 Administrator Viltrox StoreDC manual 36e8542b 1c7c 4682 a59e 68151f382505cdn shopify
s files 1 0104 0380 7298 68151f382505 v 1754899658 |||

...

lang: score:19 filesize: 17.82 M page_count: 6 document date: 2025-07-04



[\[pdf\]](#)

DC A1 Administrator 47443 Viltrox Bedienungsanleitung DE EN fotokoch de bilddaten
betriebsanleitungen |||

...

lang: **score:13** filesize: 13.65 M page_count: 3 document date: 2024-11-08

