

Manuals+

[Q & A](#) | [Deep Search](#) | [Upload](#)

manuals.plus /

- › [IQUNIX](#) /
- › [IQUNIX MQ80 Low Profile Mechanical Keyboard User Manual](#)

IQUNIX MQ80 Low Profile Keyboard

IQUNIX MQ80 Low Profile Mechanical Keyboard User Manual

Model: MQ80 Low Profile Keyboard | Brand: IQUNIX

INTRODUCTION

The IQUNIX MQ80 is a high-performance low-profile mechanical keyboard designed for both work and gaming. It features a durable CNC aluminum body, tri-mode connectivity (wireless 2.4GHz, Bluetooth, and wired USB-C), hot-swappable switches, and customizable RGB backlighting with VIA software support. This manual provides comprehensive instructions for setting up, operating, and maintaining your MQ80 keyboard.



Image: The IQUNIX MQ80 Low Profile Mechanical Keyboard in Moonlight Silver, showcasing its compact 80% layout and sleek design.

WHAT'S IN THE BOX

Verify that all the following items are included in your package:

- MQ80 Keyboard
- Premium Carrying Case
- Keycap & Switch Puller
- 2.4G USB Receiver
- Type-C Cable

Redefine Your Workflow

Premium Carrying Case
MQ80 Keyboard
Keycap & Switch Puller
2.4G Receiver
Type-C Cable
Dusk Brush



Image: A flat lay of the IQUNIX MQ80 keyboard and its accessories, including the carrying case, keycap and switch puller, 2.4G USB receiver, and Type-C cable.

SETUP

Charging the Keyboard

Before first use, it is recommended to fully charge the keyboard. Connect the provided Type-C cable to the keyboard's USB-C port and the other end to a USB power source (e.g., computer USB port, wall adapter). The charging indicator light will show the charging status.

350-Hour Battery Life

Long-lasting power with smart energy-saving tech



350Hrs

MQ80

100Hrs

other

Image: The IQUNIX MQ80 keyboard highlighting its impressive 350-hour battery life, significantly longer than typical low-profile keyboards.

Connectivity Modes

The IQUNIX MQ80 supports three connectivity modes: 2.4GHz wireless, Bluetooth, and wired USB-C. Use the switch located on the side of the keyboard to select your desired mode.

Cross-Platform

Tri-Mode Connectivity

iQUNIX



With Tri-Mode Connectivity—Bluetooth 5.1, 2.4GHz wireless, and USB-C wired—you can seamlessly switch between devices. The MQ80 supports up to three Bluetooth connections, and with a 1000Hz polling rate in 2.4G mode, it ensures ultra-responsive lag-free performance for gaming, programming, and multitasking.

Image: The IQUNIX MQ80 keyboard positioned with a laptop, smartphone, and mouse, illustrating its seamless cross-platform tri-mode connectivity.

2.4GHz Wireless Connection

1. Locate the 2.4G USB receiver in the package.
2. Plug the 2.4G USB receiver into an available USB port on your computer.
3. Switch the keyboard to 2.4G mode. The keyboard will automatically connect.

Bluetooth Connection

1. Switch the keyboard to Bluetooth mode.
2. On your device (computer, tablet, smartphone), enable Bluetooth and search for new devices.
3. Select "IQUNIX MQ80" from the list of available devices to pair.
4. The keyboard can store up to three Bluetooth connections. Use Fn + 1/2/3 to switch between paired devices.

Wired USB-C Connection

1. Connect the provided Type-C cable to the keyboard's USB-C port.
2. Connect the other end of the cable to a USB port on your computer.

3. The keyboard will automatically switch to wired mode.

OPERATING INSTRUCTIONS

Key Functions and Layout

The MQ80 features an 80% layout, providing essential keys while maintaining a compact form factor. Refer to the image below for a visual representation of the key layout.



Image: A clear top-down view of the IQUNIX MQ80 keyboard, illustrating its 80% layout with all keys visible.

RGB Lighting Customization

The MQ80 features dynamic RGB lighting with 16 million colors and various effects. You can customize the lighting directly on the keyboard using key combinations or through the VIA software for more advanced control.

Your browser does not support the video tag.

Video: Demonstrates various RGB lighting effects on the IQUNIX MQ80 keyboard, showcasing the dynamic color options.

Your browser does not support the video tag.

Video: Shows additional RGB lighting effects on the IQUNIX MQ80, highlighting the range of customization available.



Image: The IQUNIX MQ80 keyboard illuminated with vibrant blue RGB backlighting, showcasing its dynamic lighting capabilities.

VIA Software Support

The IQUNIX MQ80 supports VIA software for powerful key remapping, macro recording, and advanced RGB lighting

customization. No coding is required to personalize your keyboard settings.

- Download the VIA software from the official IQUNIX website.
- Connect your keyboard in wired mode to ensure proper detection by the software.
- Use the intuitive interface to remap keys, create custom macros, and adjust lighting effects to match your workflow and style.

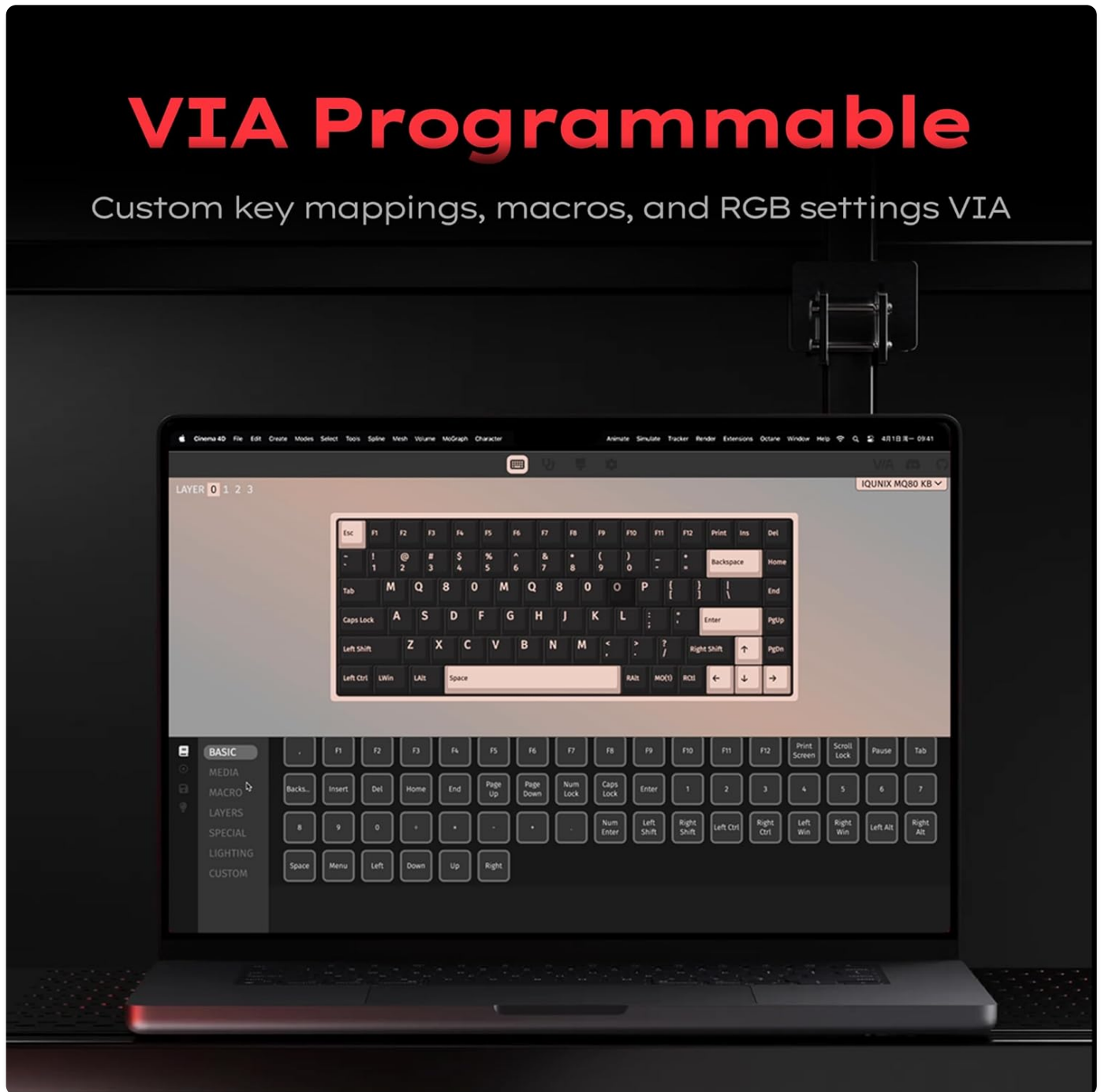


Image: A laptop screen displaying the VIA software interface, demonstrating the options for custom key mappings, macros, and RGB settings for the IQUNIX MQ80.

Hot-Swappable Switches

The MQ80 features a hot-swappable design, allowing you to easily change switches without soldering. This enables customization of your typing feel and sound.

1. Power off the keyboard or disconnect it from your device.
2. Use the provided switch puller to carefully remove the desired switch.
3. Align the pins of the new switch with the sockets on the PCB and gently press it into place until it clicks.

Hot-Swappable Switches

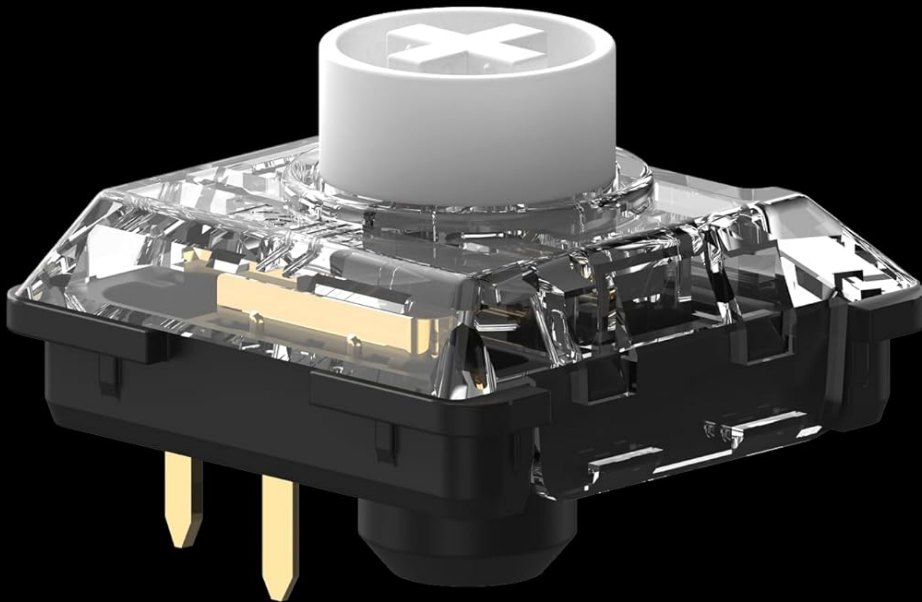
Switch out switches anytime.
Your feel, your way.



Image: A hand demonstrating the hot-swappable feature of the IQUNIX MQ80 keyboard by using a tool to remove a key switch.

Gold Red Switches

The MQ80 features Kailh POM Gold Red Linear Switches with a 40gf light actuation force bringing a fatigue-free typing experience



2.8±0.25mm

Total Travel

1.2±0.3mm

Pretravel

50M keystrokes

Lifespan

40±10gf

Actuation Force

Image: A detailed diagram of the Kailh POM Gold Red Linear Switch, highlighting its components and specifications like total travel, pre-travel,

lifespan, and actuation force.

Your browser does not support the video tag.

Video: A demonstration of the typing sounds produced by the IQUNIX MQ80 Low Profile Keyboard, highlighting its acoustic profile.

Your browser does not support the video tag.

Video: Illustrates the creamy typing feel of the IQUNIX Low Profile Keyboard, emphasizing the smooth and satisfying keystroke experience.

MAINTENANCE

Cleaning the Keyboard

To maintain the appearance and functionality of your MQ80 keyboard:

- Use a soft, lint-free cloth to wipe down the aluminum body.
- For keycaps, a damp cloth with mild soap and water can be used. Ensure keycaps are completely dry before reattaching.
- Use compressed air to remove dust and debris from between the keycaps and switches.
- Avoid using harsh chemicals or abrasive materials, as these can damage the finish and keycap legends.

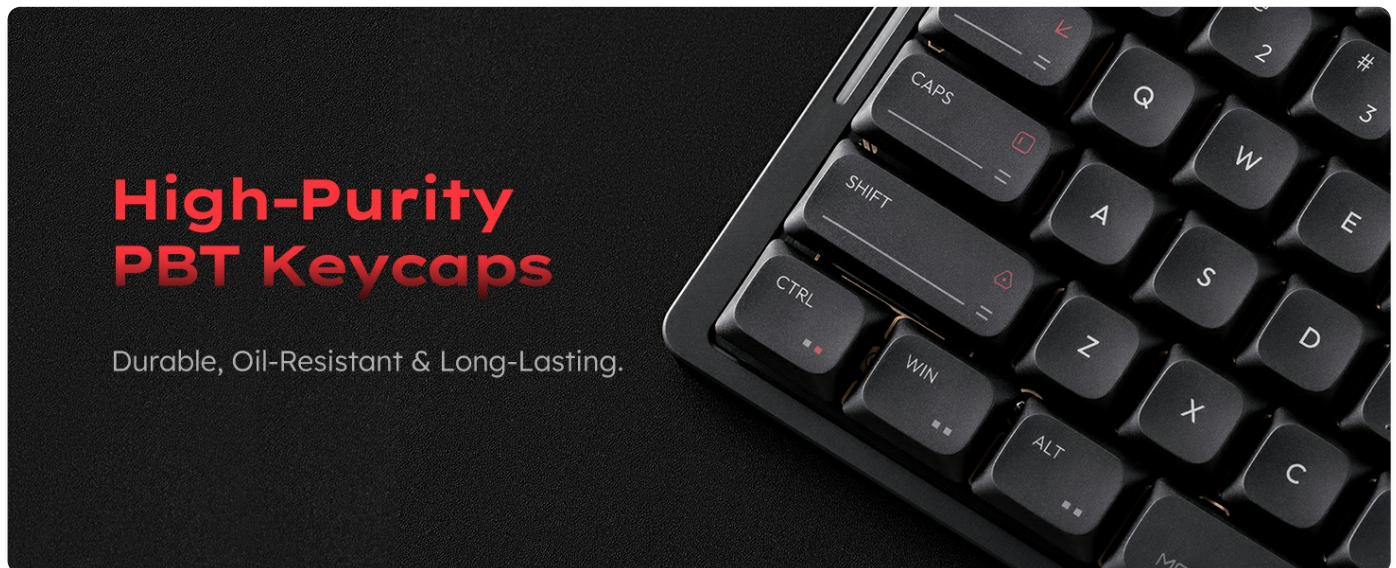


Image: A close-up view of the high-purity PBT keycaps, emphasizing their durable, oil-resistant, and long-lasting qualities.

TROUBLESHOOTING

If you encounter issues with your IQUNIX MQ80 keyboard, refer to the following common solutions:

- **Keyboard not responding:**
 - Ensure the keyboard is charged.
 - Check the connectivity mode switch (2.4G, Bluetooth, Wired) and ensure it matches your connection type.
 - For wireless connections, try re-pairing or re-inserting the 2.4G receiver.
 - For wired connections, try a different USB port or cable.
- **Bluetooth connection issues:**
 - Ensure Bluetooth is enabled on your device.
 - Forget the device in your device's Bluetooth settings and re-pair.
 - Try connecting to a different Bluetooth slot (Fn + 1/2/3).
- **RGB lighting not working or incorrect:**

- Check the keyboard's battery level.
- Use the VIA software to reset or reconfigure lighting settings.
- **Keys not registering or double-typing:**
 - Ensure switches are fully seated in their sockets.
 - If a specific switch is faulty, use the hot-swappable feature to replace it.

SPECIFICATIONS

Brand	IQUNIX
Model Number	MQ80 Low Profile Keyboard
Product Dimensions	12.64 x 1.08 x 4.9 inches
Item Weight	3.98 pounds
Connectivity Technology	2.4GHz Wireless, Bluetooth 5.1, USB-C Wired
Keyboard Description	Mechanical
Number of Keys	84
Backlighting	RGB (16 Million Colors)
Special Features	Ergonomic, Backlit, Low-Profile Key, Programmable Keys, Hot-Swappable
Battery Life	Up to 350 hours (single charge)
Compatible Devices	Laptop, PC, Tablet (Mac & Windows ready)

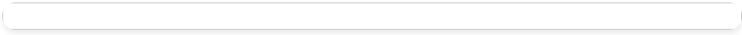


Image: A technical diagram illustrating the precise dimensions of the IQUNIX MQ80 keyboard, including its length, width, and ultra-thin profile.

Full Aluminum CNC Body

Durable & premium 180-grit anodized finish

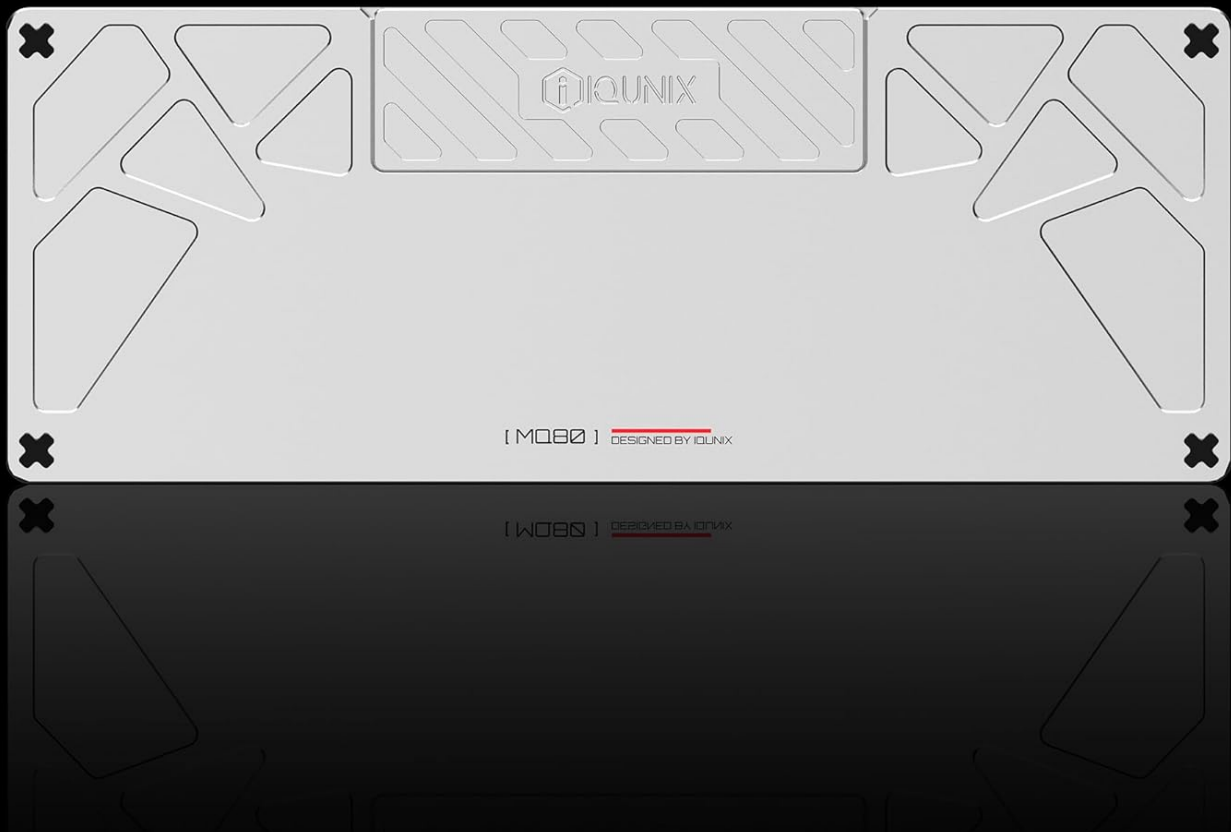


Image: The underside of the IQUNIX MQ80 keyboard, showcasing its full aluminum CNC body and durable 180-grit anodized finish.

Your browser does not support the video tag.

Video: An overview of the IQUNIX MQ80 Low Profile Mechanical Keyboard, highlighting its key features and design.

Your browser does not support the video tag.



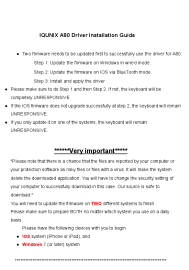


Video: Showcases the tri-mode connectivity of the IQUNIX Low Profile Mechanical Keyboard, demonstrating seamless switching between Bluetooth, 2.4G, and wired modes.

WARRANTY AND SUPPORT

IQUNIX products are designed for durability and performance. For specific warranty details and technical support, please refer to the official IQUNIX website or contact their customer service directly. Keep your purchase receipt as proof of purchase for warranty claims.

For further assistance, visit the [IQUNIX Store on Amazon](#).

Related Documents - MQ80 Low Profile Keyboard

	<p>IQUNIX F97 Series Mechanical Keyboards User Guide</p> <p>Comprehensive user guide for the IQUNIX F97 Series Mechanical Keyboards, covering connection methods (Bluetooth, 2.4GHz, Wired), function key combinations, backlight controls, LED indicator status, and system layout switching.</p>
	<p>IQUNIX M80 Mechanical Keyboard Quick User Guide</p> <p>A concise guide to the IQUNIX M80 Mechanical Keyboard, covering Bluetooth connection, key functions, LED indicators, and product specifications.</p>
	<p>IQUNIX A80 Driver Installation Guide</p> <p>A comprehensive guide for installing the IQUNIX A80 driver, including essential firmware updates for both Windows and iOS systems. Learn how to prepare your devices and troubleshoot common issues for a successful installation.</p>
	<p>IQUNIX F65 Series Mechanical Keyboard User Manual</p> <p>User manual for the IQUNIX F65 Series Mechanical Keyboard, covering Bluetooth and 2.4GHz connectivity, LED indicators, FN key combinations, and specifications.</p>
	<p>IQUNIX ZX75 Mechanical Keyboard User Manual</p> <p>User guide for the IQUNIX ZX75 mechanical keyboard. Learn about setup, connectivity (Bluetooth, 2.4G, Wired), indicator lights, key combinations, and product specifications. Includes manufacturer details and official website.</p>



F97 SERIES MECHANICAL KEYBOARDS

We recommend that you read this manual
thoroughly before using the product.

Start Reading →

[IQUNIX F97 Series Mechanical Keyboards User Manual](#)

Comprehensive user manual for the IQUNIX F97 Series Mechanical Keyboards, covering LED indicator status, connection modes (Bluetooth, 2.4GHz, Wired), and special key combinations for enhanced functionality.