

TODAAIR Outdoor AC1200

TODAAIR Outdoor WiFi Extender AC1200 Instruction Manual

Model: Outdoor AC1200

1. PRODUCT OVERVIEW

The TODAAIR Outdoor WiFi Extender AC1200 is a dual-band WiFi repeater designed to extend wireless network coverage in outdoor environments. It features IP65 weatherproofing, ensuring reliable performance in various weather conditions. This device supports both 2.4 GHz and 5 GHz frequency bands, providing stable and high-speed internet access for multiple devices across a wide area.



Image 1.1: The TODAAIR Outdoor WiFi Extender AC1200, a white rectangular device, is shown mounted on a pole in an outdoor setting, extending Wi-Fi coverage to a house and pool area.

Your browser does not support the video tag.

Video 1.1: An overview of the TODAAIR Outdoor WiFi Extender, highlighting its features and potential applications in various outdoor settings.

2. PACKAGE CONTENTS

Please verify that all items are present in the package before proceeding with installation.

- TODAAIR Outdoor WiFi Extender AC1200 Unit
- Power Adapter (DC 12V)
- Installation Accessories (e.g., cable ties, mounting screws)
- User Manual

Your browser does not support the video tag.

Video 2.1: This video demonstrates the unboxing process of the TODAAIR Outdoor WiFi Extender, showing all included components and the initial power-on sequence.

3. PRODUCT FEATURES

- **Dual-Band Connectivity:** Supports 2.4 GHz and 5 GHz for flexible network options.
- **High Speed:** Up to 1200Mbps wireless speed (AC standard).
- **Wide Coverage:** Designed to cover large outdoor areas, up to 3440 sq. ft.
- **IP65 Weatherproof:** Resistant to dust and water, suitable for outdoor use in various weather conditions.
- **Multiple Operating Modes:** Functions as an Access Point (AP) or Repeater.
- **Ethernet Port:** Includes a LAN port for wired connections to devices like cameras or computers.
- **Device Capacity:** Can support connections for up to 30 devices simultaneously.



Image 3.1: The TODAAIR Extender showcasing its 1200Mbps dual-band speed (2.4G+5G) and 300ft coverage, indicating enhanced Wi-Fi experience.

Continuous network connectivity, rain or shine

Resistant to rain and stable in storms



Image 3.2: The TODAAIR Extender demonstrating its IP65 weatherproof capabilities, showing resistance to various weather conditions like sun, rain, snow, thunder, wind, and frost.

Connects to outdoor wired cameras

Compatible with a wide range of devices, up to 65 connected devices



Image 3.3: The extender shown connecting to an outdoor wired camera, illustrating its compatibility with various devices.

Outdoor WiFi Extender Weatherproof Easy to Install and Move

- Flexibly coverage a whole-home WiFi Extensive Coverage & More Connections.
- Universal Compatibility Connects up to 30 Devices for Any Home and Style and Compatible with All Your Favorite Devices.
- Allowing You to Enjoy Stable Network Connection Even Outdoors.

UP TO 30
Devices



Image 3.4: An illustration highlighting the extender's capacity to connect up to 30 devices, providing stable network connections even outdoors.



Image 3.5: This image displays various outdoor usage scenarios for the Wi-Fi extender, including yards, swimming pools, farms, and outdoor security camera setups.

4. SETUP INSTRUCTIONS

Follow these steps for initial setup and configuration of your TODAAIR Outdoor WiFi Extender.

4.1. Physical Connection

1. Open the protective cover of the extender.
2. Connect the provided DC 12V power adapter to the DC Power port.
3. (Optional) For wired connections, connect an Ethernet cable to the LAN port.
4. Close the protective cover, ensuring the power supply is protected.
5. After powering on, wait approximately 20 seconds for the device to start detection. The indicator lights will flash, signaling it is ready for pairing.

**Supports WiFi extension and Ethernet port,
network coverage without dead angle**



Connect the Computer



Connect the Camera



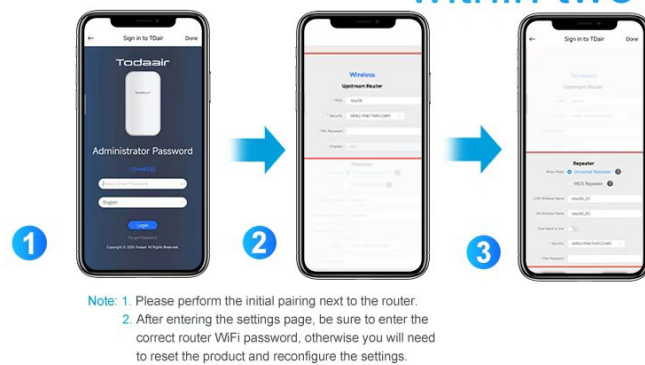
Image 4.1: A detailed view of the extender's ports, including the Reset button, LAN port, and DC Power input, with examples of connecting a computer or camera.

4.2. Initial Pairing and Configuration (via Mobile Device)

For optimal pairing success, perform the initial setup near your main router. The connection process typically involves three main steps:

1. **Connect to Extender's Network:** Connect your mobile phone or computer to the extender's default Wi-Fi network, usually named "TDair".
2. **Access Configuration Page:** Open a web browser. The system will automatically redirect you to the configuration page. If not, manually enter the default IP address (e.g., 192.168.34.1) in your browser. Enter the administrator password (default is "admin").
3. **Configure Repeater Settings:** On the configuration page, select the "Survey" option to scan for available Wi-Fi networks. It is recommended to select the 5G band for scanning first. Choose your home Wi-Fi network (SSID) from the list and enter its password. Set the SSID and password for the extender's 2.4G and 5G frequency bands. For simplicity, these can be the same as your router's Wi-Fi password. Click "Confirm" to apply the settings. The extender will reboot.
4. **Reconnect:** Reconnect your device to the newly configured extender's Wi-Fi network (e.g., "TDair5g" or "TDair2.4g") using the password you just set.

The connection will be completed within two minutes



Step 1: Connect to the "TDair" network and enter your password on the login screen

Step 2: Find the name of the router and enter the router password.

Step 3: Set your SSID and password on the page, then click Confirm, then you can use the high-speed extender WiFi!

Image 4.2: Visual steps for configuring the extender via a mobile phone, showing connection to the extender's network, entering the administrator password, and setting up the new Wi-Fi network.

Your browser does not support the video tag.

Video 4.3: A step-by-step tutorial demonstrating the repeater connection operation, including connecting to the extender's default Wi-Fi, accessing the configuration page, and setting up the network.

Your browser does not support the video tag.

Video 4.4: This video illustrates the pairing process for the long-range waterproof outdoor repeater, showing how to connect it to an existing Wi-Fi network.

5. OPERATING MODES

The TODAAIR Outdoor WiFi Extender supports two primary operating modes:

- **Repeater Mode:** Extends the existing Wi-Fi signal range from your main router, eliminating dead zones.
- **Access Point (AP) Mode:** Converts a wired internet connection into a wireless network, ideal for areas without existing Wi-Fi coverage.

AP and Repeater modes to suit your needs

Repeater: Extend the wifi signal range.



AP: Converts wireless to wired connection.



Image 5.1: A visual explanation of the Repeater mode, extending Wi-Fi from a wireless router, and AP mode, converting a wired connection to wireless.

6. INSTALLATION GUIDELINES

Proper placement is crucial for maximizing the performance of your WiFi extender.

- **Optimal Distance:** Place the extender within the strong signal range of your main router. Avoid placing it too far, which results in a weak signal, or too close, which limits its effectiveness.
- **Line of Sight:** For best results, ensure a clear line of sight between the extender and your main router, minimizing obstructions like thick walls or large metal objects.
- **Height:** Mounting the extender at a higher elevation can improve signal propagation, especially in outdoor environments.
- **Directional Coverage:** The extender provides directional coverage. Orient it towards the area where you need extended Wi-Fi.



Image 6.1: A diagram showing different installation scenarios for a Wi-Fi extender, illustrating invalid placements (too far, too close) and a

correct installation for successful signal extension.

Your browser does not support the video tag.

Video 6.2: This video demonstrates how the TODAAIR WiFi Extender works with a TODAAIR router to expand Wi-Fi coverage and eliminate dead zones in a home environment.

Your browser does not support the video tag.

Video 6.3: A demonstration of the repeater's distance test, showing its performance in extending Wi-Fi signal over a significant outdoor range.

7. SPECIFICATIONS

Feature	Description
Model Number	Outdoor AC1200
Wireless Communication Standard	802.11ac
Frequency Bands Supported	2.4 GHz, 5 GHz
Range	Up to 280 feet (approx. 3440 sq. ft. coverage)
Weatherproof Rating	IP65
Product Dimensions	9 x 3 x 4 inches
Manufacturer	TODAAIR

8. TROUBLESHOOTING

If you encounter issues, try the following solutions:

- **No Connection:**

- Ensure the extender is powered on and indicator lights are flashing.
- Verify that your device is connected to the extender's Wi-Fi network.
- Check if the password for your main router's Wi-Fi was entered correctly during setup. Incorrect passwords require a device reset and re-pairing.
- Ensure the extender is within range of your main router.

- **Weak Signal:**

- Relocate the extender to a more central position between your router and the desired coverage area.
- Minimize physical obstructions (walls, metal objects) between the extender and your devices.
- Adjust the orientation of the extender for optimal directional coverage.

- **Configuration Page Not Accessible:**

- Ensure your device is connected to the extender's default Wi-Fi network ("TDair") before attempting to access the configuration page.
- Try clearing your browser's cache or using a different browser.

- **Resetting the Device:** If issues persist, use the "RES" button (Reset) on the device to restore factory settings. This will require re-configuring the extender.

9. MAINTENANCE

To ensure the longevity and optimal performance of your TODAAIR Outdoor WiFi Extender:

- **Regular Cleaning:** Periodically wipe the exterior of the device with a soft, dry cloth to remove dust and debris. Do not use liquid cleaners.
- **Firmware Updates:** Check the manufacturer's website for any available firmware updates to ensure the device has the latest features and security enhancements.
- **Cable Integrity:** Inspect power and Ethernet cables regularly for any signs of wear or damage. Replace damaged cables immediately.
- **Protective Cover:** Always ensure the protective cover over the ports is securely closed to maintain the IP65 weatherproofing.

10. WARRANTY AND SUPPORT

For warranty information, technical support, or further assistance, please refer to the contact details provided in the product packaging or visit the official TODAAIR website.