

## Manuals+

[Q & A](#) | [Deep Search](#) | [Upload](#)

[manuals.plus](#) /

› [LongPlus](#) /

› [LongPlus 4K PoE Security Camera System User Manual - Model LP8MC84B2](#)

### LongPlus LP8MC84B2

# LongPlus 4K PoE Security Camera System User Manual

Model: LP8MC84B2

## 1. PRODUCT OVERVIEW

The LongPlus 4K PoE Security Camera System, Model LP8MC84B2, provides advanced surveillance capabilities for both home and business environments. This system includes 4K (8MP) cameras, a Network Video Recorder (NVR) with a pre-installed 2TB Hard Disk Drive (HDD), and utilizes H.265+ video compression for efficient storage. Key features include 24/7 recording, spotlight color night vision, and clear video streaming. The Power over Ethernet (PoE) design simplifies installation by providing both power and data through a single Ethernet cable.



Image: LongPlus 4K PoE Security Camera System with NVR and four bullet cameras.

## 2. WHAT'S IN THE BOX

Please verify that all items listed below are included in your package:

- 1 x 8CH NVR with 48/1.875V Adaptor
- 4 x 4K PoE Cameras
- 1 x USB Mouse
- 1 x 1M Cat5 Cable
- 1 x 1M HDMI Cable
- 4 x 18M Cat5 Cables
- 2 x Extra Connectors
- 4 x Packs of Screws and Other Accessories
- 1 x Quick Start Guide

### 3. SETUP INSTRUCTIONS

Follow these steps to set up your LongPlus 4K PoE Security Camera System:

1. **Connect the NVR to a Monitor:** Use the provided HDMI or VGA cable to connect the NVR to a compatible monitor.
2. **Power On the NVR:** Connect the NVR to a power source using the provided power adapter and turn on the NVR power switch.
3. **Connect to Network:** Connect an Ethernet cable from the NVR's LAN port to your router's LAN port for internet access.
4. **Connect Cameras:** Connect each PoE camera to any available PoE camera port on the NVR using the provided Ethernet cables. The cameras will receive both power and data through these cables.
5. **Connect USB Mouse:** Plug the USB mouse into a USB port on the NVR for system navigation.
6. **Initial Configuration:** Follow the on-screen prompts on your monitor to complete the initial setup, including setting a password and configuring network settings.

# Plug & Play Easy PoE Setup



Image: Simplified PoE setup showing NVR, cameras, and monitor connections.

Your browser does not support the video tag.

Video: LongPlus 8MP 16CH NVR Security System Unboxing & Setup Guide. This video demonstrates the unboxing process and step-by-step setup of the NVR and cameras.

## 4. OPERATING INSTRUCTIONS

### 4.1. 4K UHD and Wide View Angle

The system captures video in crystal-clear 4K (3840x2160) resolution, providing enhanced detail and clarity. The



cameras feature a 132° wide view angle, offering broader coverage and minimizing blind spots in your surveillance area.

# Striking 4K UHD Day & Night



Image: Demonstration of 4K UHD video quality, highlighting clear details day and night.



# Wide View Angle



Image: Comparison illustrating the 132° wide view angle of LongPlus cameras.

## 4.2. AI Motion Detection and Activity Zones

The smart PoE cameras utilize AI object detection to accurately identify humans and vehicles, reducing false alarms. You can define specific activity zones within the camera's field of view to focus detection on critical areas and ignore motion in irrelevant regions. Privacy masks can also be set to exclude certain areas from recording.

# Smart AI Detection Person/Vehicle



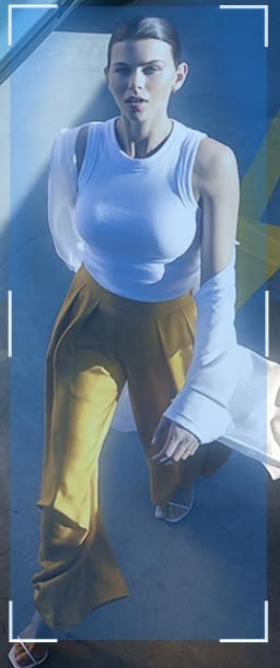
Push



Email



Siren



Doorstep

Motion was detected by your camera

now



Image: Smart AI detection identifying persons and vehicles, triggering alerts.

## 4.3. Triple Night Vision Modes

The system offers three night vision modes to suit various lighting conditions:

- **IR Night Vision:** Standard black and white infrared vision.
- **Color Night Vision:** Provides full-color footage in low-light conditions, allowing for better identification of details up to 100ft/30m.
- **Smart Night Vision:** Automatically switches between IR and color modes based on detected activity.



#### 4.4. Audio and Strobe Light Alarm / Two-way Audio

When motion is detected, the cameras can automatically trigger an audio alarm and red & blue strobe lights to deter intruders. The built-in two-way audio feature allows for real-time communication through the camera, enabling you to speak to visitors or warn off unwanted individuals.



Image: Two-way audio functionality with integrated strobe light alarm.

#### 4.5. Flexible Storage and Playback

The NVR includes a 2TB HDD for 24/7 continuous recording, expandable up to 10TB. H.265+ compression technology significantly reduces file sizes, saving storage space without compromising video quality. Bank-level

encrypted cloud storage is also available as an option. The Longvision APP/Client allows for easy playback of recorded footage, with events highlighted on the timeline for quick review.

# Stay Connected Anywhere Anytime

OS Supported



Max Users Access

**32** Users

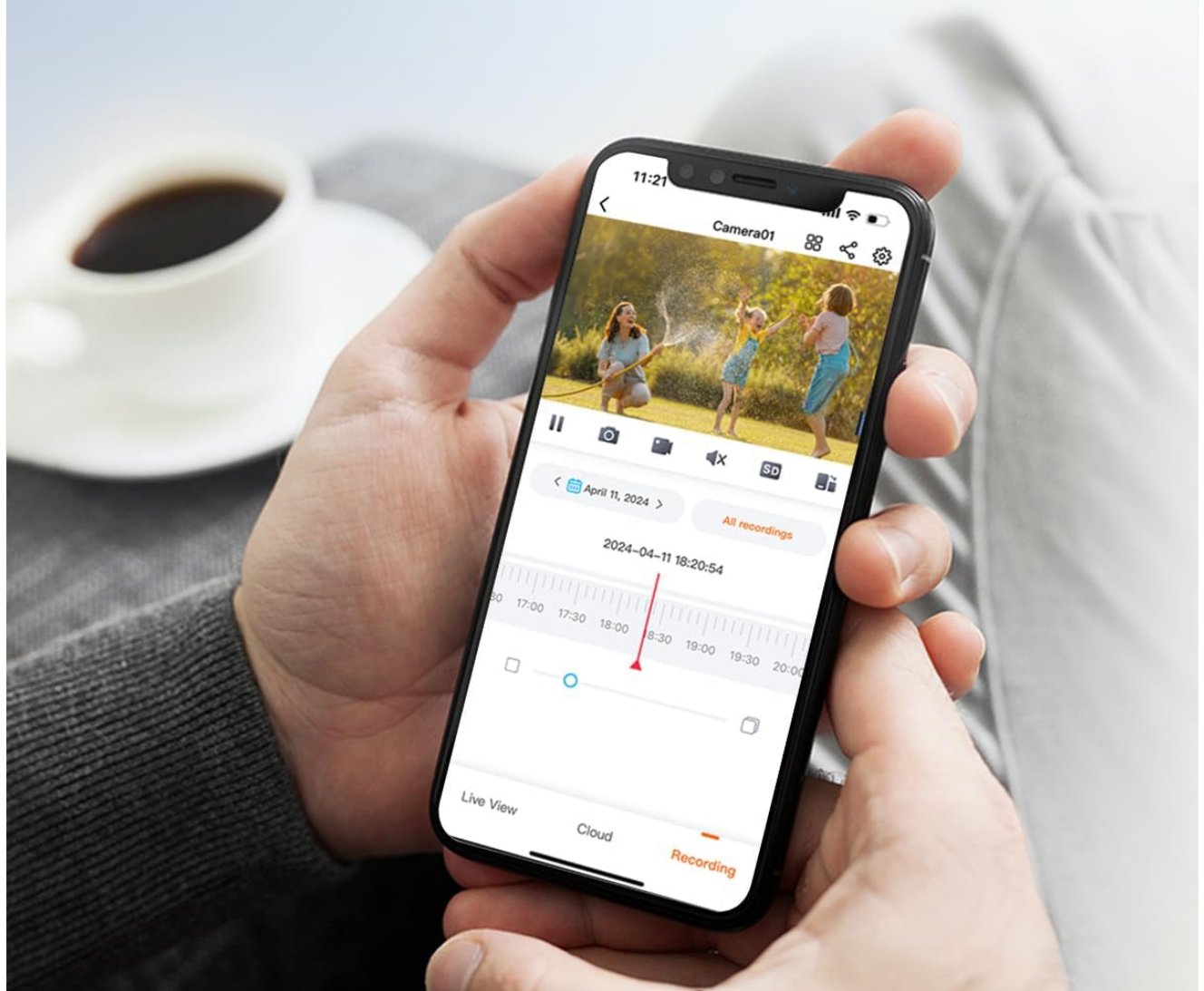


Image: Interface demonstrating 24/7 recording and smart playback features.



# 24/7 Recording & Smart Playback



Built-in  
**2TB** HDD



Up to  
**10TB**



Cloud  
Storage



2025-2-11  
10:12:30



2025-2-11  
11:23:22



2025-2-11  
14:38:25



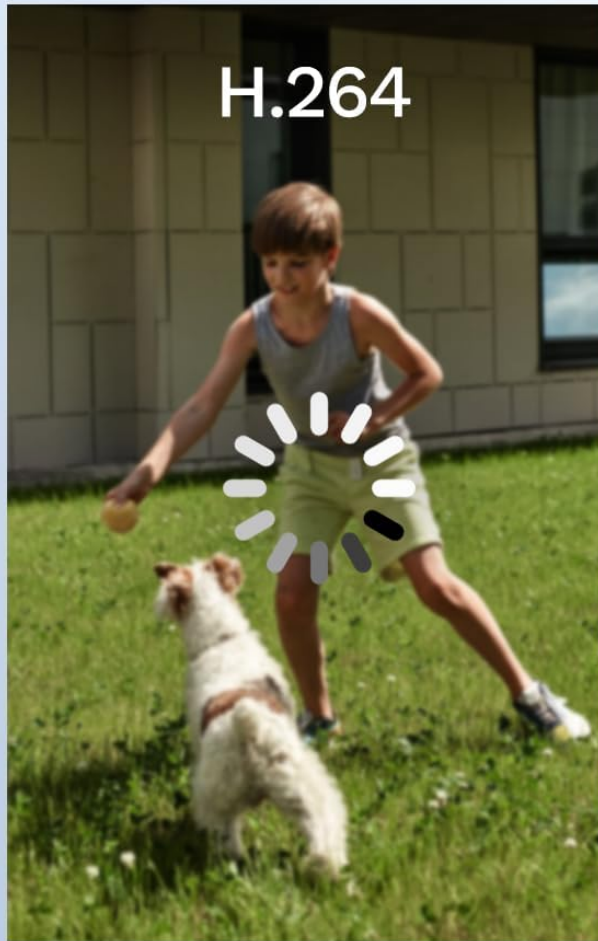
2025-2-11  
17:42:33

Image: Explanation of H.265+ compression for efficient storage.

## 4.6. Remote Access and Sharing

Access live footage and recorded videos remotely via the Longvision app, compatible with iOS, Mac, Windows, and Android devices. The system supports up to 32 users, allowing you to share access with family members or colleagues.

# Efficient H.265+ Compression



Occupy **100%** Bandwidth



Occupy **25%** Bandwidth

**H.265+**

**(Save 75% Storage Space)**

**H.264**

Image: Remote access to live camera feeds via the Longvision app.

Your browser does not support the video tag.

Video: LongPlus 4Channel PoE Security Camera System Overview. This video showcases the system's features including PoE setup, app monitoring, 4K UHD, night vision, motion detection, and alarm functions.

## 5. MAINTENANCE

To ensure optimal performance and longevity of your security system, regular maintenance is recommended:

- **Clean Camera Lenses:** Periodically clean camera lenses with a soft, damp cloth to remove dust and

smudges that may affect image clarity.

- **Check Connections:** Ensure all cable connections (power, Ethernet, video) are secure and free from damage.
- **Firmware Updates:** Regularly check for and install firmware updates for the NVR and cameras to benefit from new features and security enhancements.
- **Review Recordings:** Periodically review recorded footage to ensure the system is capturing events as expected.
- **NVR Placement:** Ensure the NVR is placed in a well-ventilated area to prevent overheating.

## 6. TROUBLESHOOTING

If you encounter issues with your LongPlus security system, consider the following common troubleshooting steps:

- **No Video Display:**
  - Verify all power and video cables are securely connected.
  - Ensure the monitor is set to the correct input source (HDMI/VGA).
  - Restart the NVR.
- **Motion Detection Not Working:**
  - Check motion detection settings in the NVR interface or app.
  - Ensure activity zones are correctly configured and not excluding desired areas.
  - Adjust sensitivity settings.
- **Remote Access Issues:**
  - Confirm the NVR is connected to the internet.
  - Check network settings on the NVR and your router.
  - Ensure the Longvision app is updated to the latest version.
- **Poor Image Quality:**
  - Clean the camera lens.
  - Check for obstructions in the camera's field of view.
  - Ensure sufficient lighting for optimal night vision performance.

## 7. SPECIFICATIONS

Feature	Detail
Brand	LongPlus
Connectivity Technology	Wired
Video Capture Resolution	3840x2160, 4K
Special Features	High Efficiency Video Coding, Red & Blue Flashing Lights, Easy to Install, Waterproof, Vehicle Detection, Adjustable, Motion Sensor, Siren Alarm/Flexible Storage (Local Storage/Cloud Storage), Smart Playback, Vehicle/Person/Animal Detection



Feature	Detail
Number of Channels	8
Memory Storage Capacity	2 TB (expandable up to 10TB)
Color	White
Power Source	Corded Electric
Item Dimensions L x W x H	13.29 x 10.23 x 9.4 inches
Operating System Compatibility	Android, Mac OS, Windows, iOS
Recommended Uses	Indoor, Outdoor, Surveillance
Compatible Devices	Cameras, Laptops, Personal Computers, Smartphones
Other Camera Features	Front, Rear
Low Light Technology	Night Vision
Night Vision Range	100 Feet
Frame Rate	30
Recording Mode	Motion-triggered recording (default); scheduled recording, 24/7 recording
Total USB Ports	2
Hardware Interface	Ethernet, HDMI, USB, VGA
Lens Type	Wide Angle
Video Input	VGA, USB, Ethernet, HDMI
Viewing Angle	132 Degrees
Manufacturer	LongPlus Direct
Item Weight	13.26 pounds






Feature	Detail
Date First Available	June 12, 2025

## 8. WARRANTY AND SUPPORT

LongPlus provides a **2-year warranty** for this product, ensuring coverage against manufacturing defects. Additionally, lifetime technical support is available to assist with any inquiries or operational issues you may encounter. For support, please contact LongPlus customer service.

© 2025 LongPlus. All rights reserved.

### Related Documents - LP8MC84B2

	<p><a href="#">LongPlus PoE Camera Security System Quick Start Guide</a></p> <p>A quick start guide for the LongPlus PoE Camera Security System, covering NVR and camera introductions, installation, connection, operation via local interface, web, and mobile app, frequently asked questions, and safety instructions.</p>
	<p><a href="#">LongPlus Smart WIFI Camera LCY4B Instruction Manual</a></p> <p>Instruction manual for the LongPlus Smart WIFI Camera (model LCY4B) by Herospeed Technology Limited. Covers product overview, installation, setup via the LongPlus APP, account binding and sharing, firmware updates, and FCC compliance.</p>
	<p><a href="#">LongPlus Quick Start Guide</a></p> <p>A comprehensive quick start guide for the LongPlus wireless smart battery camera, covering setup, installation, features, and troubleshooting.</p>
	<p><a href="#">LongPlus IP Camera Quick Start Guide and Setup</a></p> <p>Comprehensive guide for setting up and using the LongPlus IP Camera, including app download, device pairing, installation, sharing features, charging, firmware updates, and troubleshooting.</p>
	<p><a href="#">LongPlus Wireless Smart Battery Camera Quick Start Guide</a></p> <p>A comprehensive quick start guide for the LongPlus wireless smart battery camera, covering setup, installation, sharing, charging, specifications, and troubleshooting.</p>

**LongPlus**



BirdCare Feeder Cam Quick Guide

### [LongPlus BirdCare Feeder Cam Quick Guide](#)

A quick guide for setting up and using the LongPlus BirdCare Feeder Cam, including installation, charging, and basic operation.