

KOORUI E1511A

KOORUI E1511A 15.6-inch Portable FHD Monitor User Manual

MODEL: E1511A

1. Introduction

Thank you for choosing the KOORUI E1511A 15.6-inch Portable FHD Monitor. This device is designed to enhance your productivity and entertainment experience by providing a versatile second display for various devices. This manual provides essential information for the safe and efficient use of your monitor. Please read it thoroughly before operation and retain it for future reference.



Image 1.1: KOORUI E1511A Portable Monitor

The KOORUI E1511A features a 15.6-inch Full HD (1920x1080) IPS display, offering a 178° wide viewing angle and vivid color reproduction. It is designed for portability, weighing approximately 0.7kg and measuring 0.9cm thin. The

monitor includes dual speakers and multiple connectivity options for broad compatibility.

2. Package Contents

Please check the package for the following items:

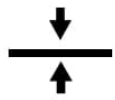
- KOORUI E1511A Portable Monitor
- USB Type-C to Type-C Cable (for video, audio, and power)
- Mini HDMI to HDMI Cable (for video and audio)
- USB Type-A to Type-C Power Cable (for additional power supply)
- Protective Flip Cover (doubles as a stand)
- User Manual (this document)

3. Product Overview

3.1 Physical Characteristics

The KOORUI E1511A is designed for portability and ease of use. It features an ultra-thin profile and a lightweight construction, making it suitable for travel and mobile setups.

Convenient to Carry



0.43 inch
ultra-thin



4mm
bezel-less



700g/1.54lb
weight



1.54^{lb} \approx  **24.64oz**



0.43^{inch}

Image 3.1: Monitor Dimensions and Weight

Dimensions: Approximately 353.8mm x 221.81mm x 11mm (13.98 inches x 8.73 inches x 0.43 inches)

Weight: Approximately 0.7 kg (1.54 lbs)

3.2 Ports and Buttons

Familiarize yourself with the ports and control buttons on your monitor:



Image 3.2: Monitor Ports and Buttons Layout

1. **USB-C (Full-Function):** Connects to compatible devices for video, audio, and power transmission via a single cable.
2. **USB-C (Full-Function):** Second full-function USB-C port for additional connectivity options.
3. **HDMI:** Connects to devices using an HDMI cable for video and audio input.
4. **Audio Jack:** 3.5mm port for connecting headphones or external speakers.
5. **Menu/Enter Button:** Accesses the On-Screen Display (OSD) menu and confirms selections.
6. **Down Button:** Navigates down in the OSD menu or adjusts settings.
7. **Up Button:** Navigates up in the OSD menu or adjusts settings.

8. **Power/Exit Button:** Turns the monitor on/off or exits the OSD menu.

4. Setup

4.1 Using the Protective Flip Cover

The included protective flip cover can be folded to serve as a stand for your monitor, allowing for various viewing angles in both landscape and portrait modes.

4.2 Connecting to Devices

The KOORUI E1511A supports multiple connection methods:

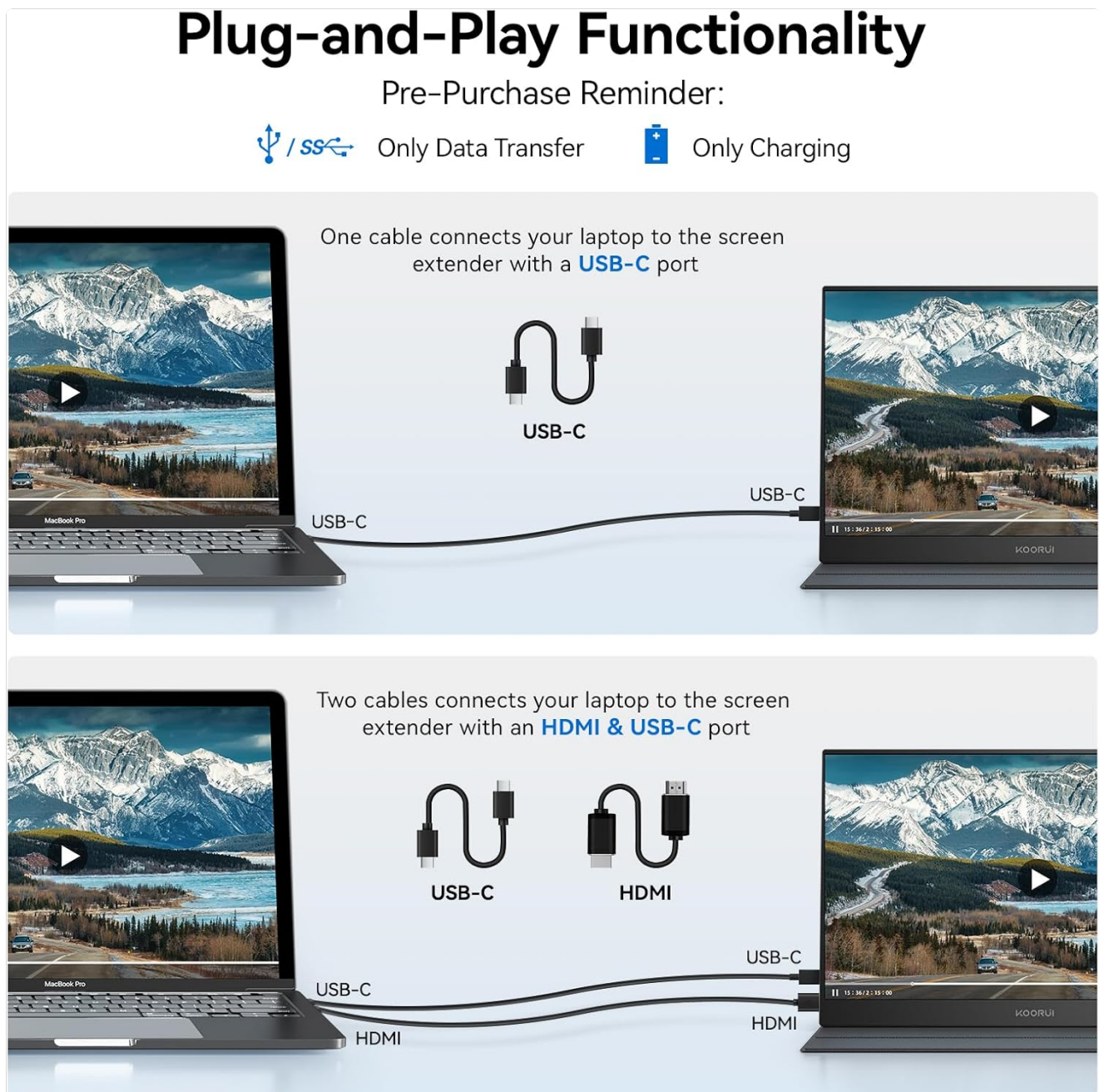


Image 4.1: Plug-and-Play Functionality

- **Single USB-C Cable Connection:** If your device (laptop, smartphone) has a full-function USB-C port (supporting Thunderbolt 3/4, DisplayPort Alt Mode, or data/video transfer), you can connect it to the monitor using a single USB-C to USB-C cable. This cable will transmit video, audio, and power to the monitor.
- **HDMI and USB-C Power Connection:** If your device only has an HDMI port or a USB-C port that does not support video output (e.g., only for charging or data transfer), you will need two cables:

- Connect the Mini HDMI to HDMI cable from your device to the monitor's HDMI port.
- Connect the USB Type-A to Type-C power cable from a power source (e.g., laptop USB-A port, wall adapter) to one of the monitor's USB-C ports for power.

Important Note: When using an HDMI connection, the monitor requires external power via the USB-C power cable to function correctly.

USB-C and Mini-HDMI Connectivity

Portable laptop monitor with dual Type C ports and mini HDMI port for easy connection to laptop, PC, Mac, cell phone, XBOX, PS3/4, Switch. No need for applications, drivers, plug and play.



Image 4.2: USB-C Port Compatibility Guide

Before connecting with a single USB-C cable, verify that your laptop's USB-C port supports video output (DisplayPort Alt Mode or Thunderbolt). Ports marked for 'Only Data Transfer' or 'Only Charging' will not transmit video.

5. Operating Instructions

5.1 Powering On/Off

Press the **Power/Exit** button (8) to turn the monitor on or off.

5.2 Extending Your Display

Once connected, your operating system should detect the monitor. You may need to adjust display settings (e.g., Extend, Duplicate) in your computer's display settings.

Give Your Mobile Apps a Bigger Screen

Easily connects to your device with just 1 TUSB-C cable, no drivers required. (Where compatible) It can easily replicate your phone screen to magnify your view. The second screen can be used for navigation, movie watching and gaming.

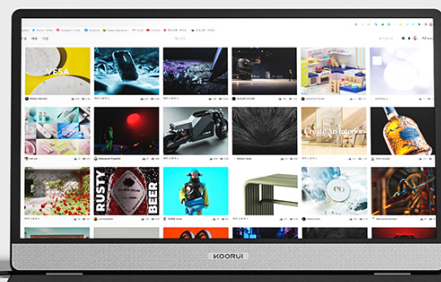
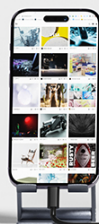


Image 5.1: Expanding Your Laptop Screen

5.3 Connecting to Smartphones

For compatible smartphones with full-function USB-C ports, you can mirror or extend your phone's display to the monitor using a single USB-C cable. This allows for a larger viewing area for mobile applications, media, and gaming.

Gaming Performance

Wide Compatibility

The portable monitor featured two USB ports and a HDMI port, easily connect with PC, Mac, Phone, Xbox, Switch, PS4/5 etc and enables compatibility with any laptop with a HDMI port.



Switch



Xbox



PS 4/5



Phone



Laptop



Image 5.2: Giving Mobile Apps a Bigger Screen

5.4 On-Screen Display (OSD) Menu

Press the **Menu/Enter** button (5) to access the OSD menu. Use the **Up** (7) and **Down** (6) buttons to navigate through options and adjust settings such as brightness, contrast, color temperature, and input source. Press **Menu/Enter** again to confirm a selection, or **Power/Exit** (8) to exit the menu.

5.5 Audio Output

The monitor features built-in dual 1W speakers for audio output. You can also connect headphones or external speakers via the 3.5mm Audio Jack (4).

Dual Speaker Surround Sound

With Dual 1W speakers system that plays everything in surround sound, you'll always feel like you're listening from the front row.



Image 5.3: Dual Speaker Surround Sound

5.6 Versatile Usage Scenarios

The KOORUI E1511A is compatible with a wide range of devices, including laptops, PCs, Mac, phones, Xbox, PlayStation (PS4/PS5), and Nintendo Switch game consoles.

Support Multiple Devices

The portable monitor featured two USB ports and a HDMI port, easily connect with PC, Mac, Phone, Xbox, Switch, PS4/5 etc and enables compatibility with any laptop with a HDMI port.



Switch



Xbox



PS 4/5



Phone



Laptop



Image 5.4: Support for Multiple Devices

Ready for Anything

Work, play, or unwind—vivid visuals wherever you go.

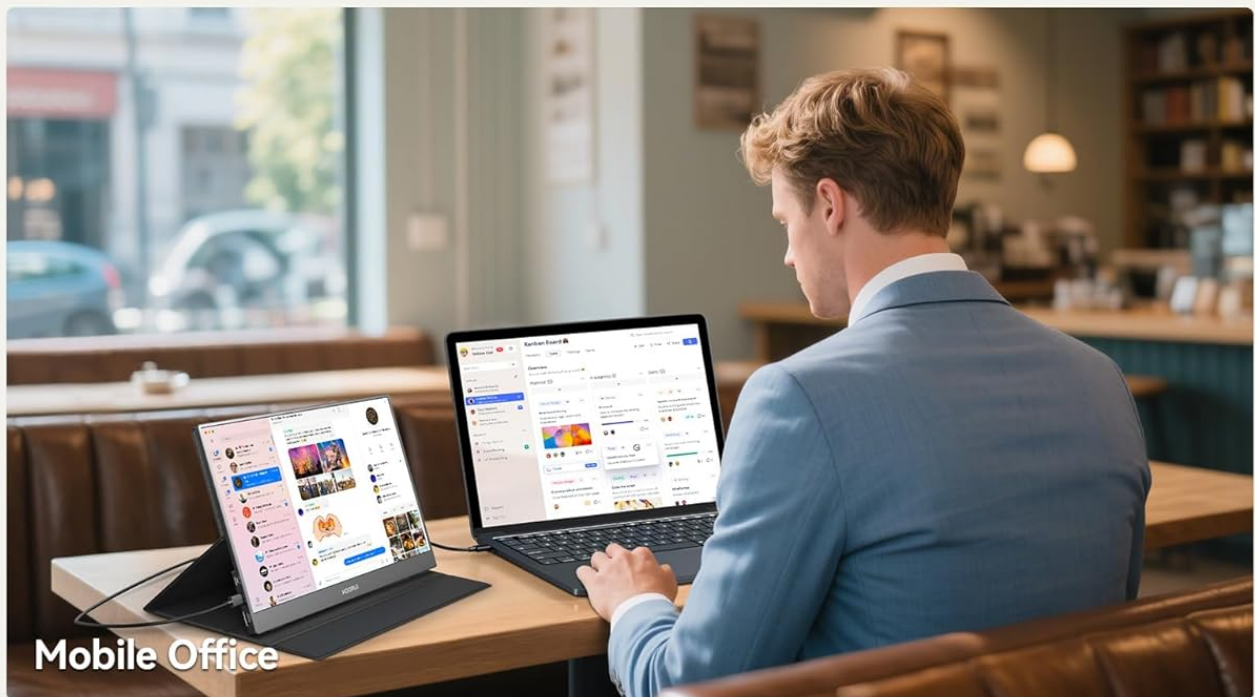


Image 5.5: Ready for Anything - Everyday Use, Gaming, Mobile Office

5.7 Display Features

The monitor offers a vibrant visual experience with 16.7 million colors and a 1000:1 contrast ratio. It also includes an Eye Protection Mode and Flicker-Free technology to reduce eye strain during prolonged use.



Expand your Laptop Screen

The monitor comes with Type-C video capabilities. Watch high-resolution videos from your smartphone or laptop. Its slim, double-sided Type-C cable makes sharing and presentation easy.

Image 5.6: Enjoy 16.7 Million Colors



Enjoy 16.7M Colors with Display Monitor

KOORUI E1511A 15.6 inch portable monitor with 1920x1080 resolution advanced IPS matte screen support 178° full viewing angle, it renders accurate and bright color, draws you into the video or game with lifelike colors and amazing detail.

 16.7 Million Colors

 1000:1 Contrast Ratio

Image 5.7: Eye Protection and Flicker-free Mode

6. Maintenance

6.1 Cleaning the Monitor

- Always power off and unplug the monitor before cleaning.
- Use a soft, lint-free cloth slightly dampened with water or a non-abrasive screen cleaner.
- Do not spray cleaner directly onto the screen.
- Avoid using alcohol, ammonia, or abrasive cleaners, as these can damage the screen surface.

6.2 Caring for the Protective Cover

The durable PU leather protective cover shields your monitor from scratches and minor impacts. Keep it clean with a soft, dry cloth. Avoid exposing it to extreme temperatures or harsh chemicals.

Protective Flip Cover

Shields your portable monitor from scratches and water damage, then folds into a sturdy, multi-angle stand for comfortable viewing.



Stand
Functionality



Adjustable
Viewing Angles



Scratch
Resistant



Waterproof



Image 6.1: Protective Flip Cover for Travel

7. Troubleshooting

If you encounter issues with your KOORUI E1511A monitor, please refer to the following common problems and solutions:

Problem	Possible Cause	Solution
---------	----------------	----------

Problem	Possible Cause	Solution
No signal / Black screen	<ul style="list-style-type: none">• Incorrect input source selected.• Cable not properly connected.• Device's USB-C port does not support video output.• Insufficient power.	<ul style="list-style-type: none">• Press the Menu/Enter button to open the OSD and select the correct input source.• Ensure all cables are securely connected to both the monitor and the source device.• Verify your device's USB-C port supports DisplayPort Alt Mode or Thunderbolt.• If using HDMI, ensure the USB-C power cable is connected to a power source.
Monitor flickers or blinks	<ul style="list-style-type: none">• Insufficient power.• Refresh rate mismatch.• Faulty cable.	<ul style="list-style-type: none">• Ensure the monitor is receiving adequate power, especially if using HDMI (connect USB-C power cable).• Lower the refresh rate on your computer's display settings (e.g., to 60Hz).• Try a different cable to rule out cable issues.
No sound from speakers	<ul style="list-style-type: none">• Volume too low or muted.• Incorrect audio output device selected on source.• Headphones connected to audio jack.	<ul style="list-style-type: none">• Adjust volume via OSD menu or source device.• Ensure the monitor is selected as the audio output device on your computer/device.• If headphones are connected, audio will be routed there.
Display is too dim	<ul style="list-style-type: none">• Brightness setting is low.• Insufficient power from single USB-C connection.	<ul style="list-style-type: none">• Adjust brightness through the OSD menu.• If using a single USB-C cable, some devices may not provide enough power for maximum brightness. Connect an additional USB-C power cable for optimal performance.

8. Specifications

Key technical specifications for the KOORUI E1511A Portable Monitor:

Feature	Specification
Model	E1511A
Screen Size	15.6 Inches
Display Type	IPS LED


Feature	Specification
Resolution	1920 x 1080 (FHD 1080p)
Aspect Ratio	16:9
Viewing Angle	178 Degrees
Response Time	5 Milliseconds
Refresh Rate	60 Hz
Color Support	16.7 Million Colors
Hardware Interface	2x USB Type-C (Full-Function), 1x HDMI
Audio Output	Built-In Dual Speakers, 3.5mm Audio Jack
Special Features	Built-In Speakers, Eye Care, Lightweight, Portable
Product Dimensions	1 x 35 x 22 cm (0.43 x 13.98 x 8.73 inches)
Item Weight	1.2 kg (2.64 lbs) - Note: Product description states 0.7kg, packaging may include accessories.





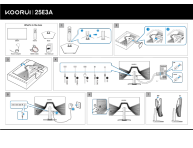
9. Warranty and Support

KOORUI products are manufactured to high-quality standards. For specific warranty information, please refer to the warranty card included with your product or visit the official KOORUI website. If you encounter any issues or require technical assistance, please contact KOORUI customer support through the vendor's contact information provided at the point of purchase or on the official KOORUI support channels.

No official seller videos were found in the provided product data for embedding in this manual.

Related Documents - E1511A

 <p>User Manual KOORUI Monitor</p>	<p>KOORUI 15B1 Portable Monitor User Manual</p> <p>Comprehensive user manual for the KOORUI 15B1 portable monitor, detailing setup, operation, OSD functions, common applications, and troubleshooting for optimal device usage.</p>
---	--

 <p>User Manual Koorui Monitor</p>	<p>Koorui 15B1 Portable Monitor User Manual</p> <p>Comprehensive user manual for the Koorui 15B1 portable monitor, covering setup, features, troubleshooting, and safety precautions. Learn how to connect and optimize your display for various devices.</p>
 <p>User Manual Koorui Monitor</p>	<p>Koorui 24N1 Monitor User Manual - Setup, Features, and Troubleshooting</p> <p>Comprehensive user manual for the Koorui 24N1 monitor, covering setup, product parameters, OSD functions, common applications, and troubleshooting tips. Learn how to optimize your display experience.</p>
<p>User Manual for Koorui Monitor</p> 	<p>Koorui Monitor User Manual</p> <p>This user manual provides comprehensive instructions for the Koorui monitor, covering setup, features, troubleshooting, and safety guidelines. It details button functions, OSD menu options, and solutions to common problems, ensuring optimal use and care of the device.</p>
<p>Koorui</p> <p>VESA Holder Installation & Attention</p>  <p>01</p>	<p>Koorui VESA Holder Installation and Removal Guide</p> <p>Detailed instructions for installing and removing the VESA holder on Koorui monitors, including important safety precautions and mounting specifications.</p>
	<p>Koorui 25E3A Monitor Installation Guide</p> <p>Step-by-step installation instructions for the Koorui 25E3A gaming monitor. This guide covers unboxing, assembling the stand, connecting cables (HDMI, DisplayPort), powering on the device, and adjusting the tilt for your new 24.5-inch, 180Hz/200Hz, 1ms FHD display.</p>