

## Rollei Powerflex X8 Dual Lens

# Rollei Powerflex X8 Dual Lens Digital Camera User Manual

Model: Powerflex X8 Dual Lens

## 1. INTRODUCTION

This manual provides detailed instructions for the safe and effective use of your Rollei Powerflex X8 Dual Lens Digital Camera. Please read this manual thoroughly before using the camera and retain it for future reference. This camera is designed to capture high-resolution photos and videos with its dual lens system and advanced features.

## 2. SAFETY INFORMATION

- **Water Exposure:** This camera is not waterproof. Avoid exposing it to water or high humidity to prevent damage.
- **Temperature:** Do not expose the camera to extreme temperatures (hot or cold) or direct sunlight for extended periods.
- **Handling:** Handle the camera with care. Avoid dropping it or subjecting it to strong impacts.
- **Cleaning:** Use a soft, dry cloth for cleaning. Do not use harsh chemicals or solvents.
- **Battery:** Use only the specified battery type. Do not attempt to open, crush, or expose the battery to fire. Dispose of batteries according to local regulations.
- **Children:** Keep the camera and its accessories out of reach of small children.

## 3. PACKAGE CONTENTS

Verify that all items listed below are included in your package:

- Rollei Powerflex X8 Dual Lens Digital Camera
- Rechargeable Battery
- USB-A to USB-C/Micro-USB Adapter
- USB-A to MicroSD Adapter
- Hand Strap & Carrying Strap
- Storage Bag
- Cleaning Cloth

- USB-C & HDMI Cable
- User Manual (this document)



*Image: The Rollei Powerflex X8 Dual Lens Digital Camera shown with its complete set of accessories, including the camera itself, battery, various adapters, straps, storage bag, cleaning cloth, and cables.*

## 4. PRODUCT OVERVIEW

Familiarize yourself with the main components of your camera.

# Powerflex X8 Dual Lens

8,4cm



7,3cm

12,6cm



**Ideal Gift**



**Compact & Portable**



**Battery**



**USB-A to USB-C/  
micro-USB adapter**



**USB-A to  
microSD adapter**



**Hand strap &  
Carrying strap**



**Storage bag**



**Cleaning cloth**



**USB-C & HDMI cable**



**User manual**

Image: A diagram illustrating the Rollei Powerflex X8 Dual Lens camera with its physical dimensions (12.6cm x 8.4cm x 7.3cm) and a visual representation of the included accessories.

## Key Components:

- **Front Lens:** Primary lens for general photography and video.
- **Rear Lens:** Secondary lens, ideal for selfies and vlogging.
- **3.6-inch HD Touch Screen:** For navigation, settings adjustment, and preview.

- **Power Button:** To turn the camera on or off.
- **Shutter Button:** To capture photos or start/stop video recording.
- **Zoom Control:** Adjusts the 8x optical zoom.
- **Mode Dial/Buttons:** Select various shooting modes.
- **Built-in Flash:** Provides illumination in low-light conditions.
- **USB-C Port:** For charging and data transfer.
- **HDMI Port:** For connecting to an external display.
- **MicroSD Card Slot:** For memory card insertion.
- **Battery Compartment:** For battery insertion.

## 5. SETUP

---

### 5.1. Charging the Battery

1. Insert the rechargeable battery into the camera's battery compartment.
2. Connect the camera to a power source using the provided USB-C cable and a compatible USB power adapter (not included).
3. The charging indicator light will illuminate. Once fully charged, the light will change or turn off.

### 5.2. Inserting a MicroSD Card

1. Locate the microSD card slot on the camera.
2. Insert a compatible microSD card (Class 10 or higher recommended) into the slot with the contacts facing the correct direction until it clicks into place.
3. To remove, gently press the card until it springs out.

### 5.3. Initial Power On

1. Press and hold the Power button until the screen illuminates.
2. Follow the on-screen prompts to set the language, date, and time.

## 6. OPERATING INSTRUCTIONS

---

### 6.1. Basic Camera Functions

- **Power On/Off:** Press the Power button.
- **Taking Photos:** In photo mode, press the Shutter button halfway to focus, then fully to capture.
- **Recording Videos:** In video mode, press the Shutter button to start recording, press again to stop.
- **Zoom:** Use the zoom control to adjust the 8x optical zoom.

# 8X Optical Zoom & 10 Creative Filters



*Image: This image illustrates the camera's 8x optical zoom capability, showing a scene at 2x and 8x magnification. It also displays examples of creative filters: Retro, Black/White, Warm Tone, and Cool Tone.*

## 6.2. Dual Lens Operation

The Powerflex X8 features both a front and a rear lens. The rear lens is specifically designed for selfies and vlogging, offering a convenient way to frame yourself.

- **Switching Lenses:** A dedicated "Switch" button or an on-screen icon allows you to toggle between the front and

rear lenses.

- **Selfie Mode:** When the rear lens is active, the camera automatically optimizes settings for self-portraits.



*Image: Two individuals are shown taking a selfie using the Rollei Powerflex X8 Dual Lens camera, emphasizing the functionality of the rear lens for self-portraits.*

### 6.3. Touch Screen Navigation

The 3.6-inch HD touch screen provides intuitive control over camera settings and functions.

- **Tap:** Select options or confirm actions.
- **Swipe:** Navigate through menus or review photos/videos.
- **Settings Adjustment:** Adjust parameters like ISO, EV (Exposure Value), WB (White Balance), and exposure directly via touch gestures on the screen.

## 3.6 inch IPS Touch Display

Large touchscreen for crystal-clear display & intuitive operation



Image: A user is shown interacting with the 3.6-inch IPS touch display of the Rollei Powerflex X8 camera, demonstrating the intuitive on-screen menu for adjusting settings.

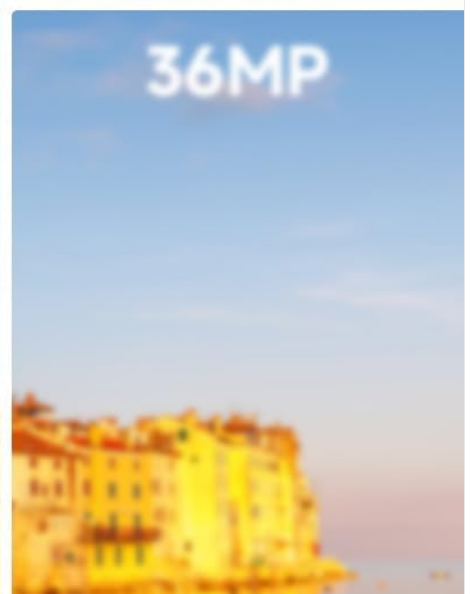
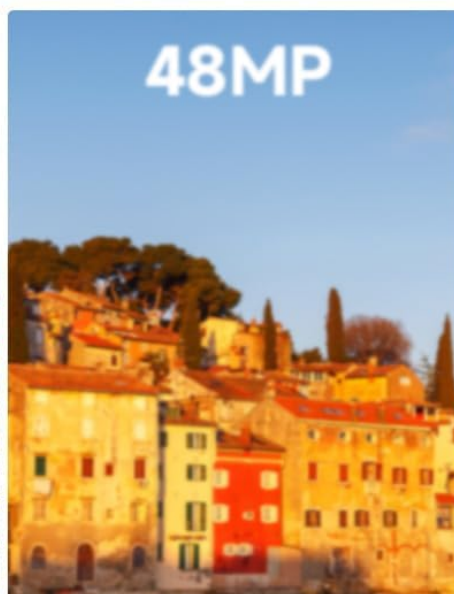
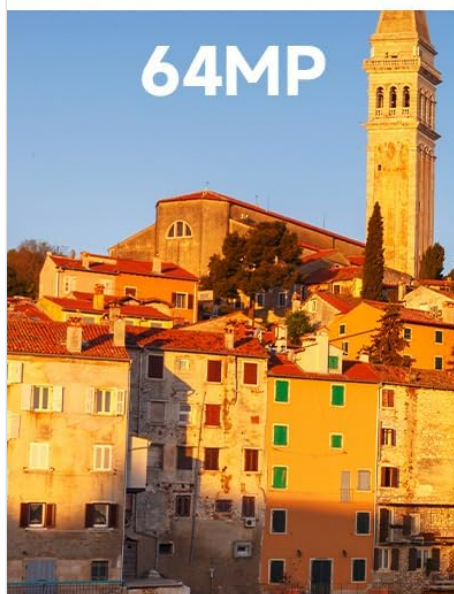
## 6.4. Photo and Video Modes

The camera supports high-resolution imaging and video recording.

- **64MP Photos:** Capture ultra-high-resolution still images.
- **5K Ultra HD Video:** Record videos with exceptional clarity.
- **Intelligent Autofocus:** Choose from Auto, Manual, or Single focus modes for precise subject tracking.
- **Built-in Flash:** Automatically or manually activate the flash for improved lighting in dark environments.
- **Anti-Vibration:** This function helps stabilize images and videos, reducing blur caused by camera shake.

# Resolution Up to **64 Megapixels**

Sharp and crystal-clear images with a high level of detail



*Image: A visual comparison demonstrating the clarity and detail achieved with 64MP, 48MP, and 36MP resolutions captured by the Rollei Powerflex X8 camera.*

# Multifunctional Digital Camera

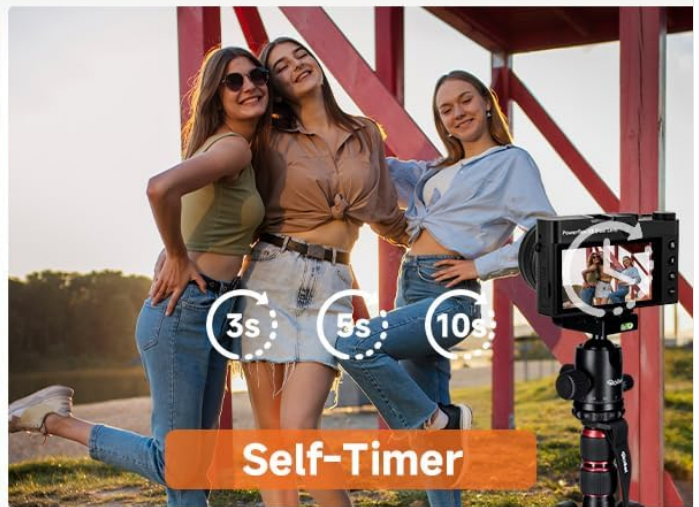


Image: This graphic highlights several key features including three focus options (Auto, Manual, Single), self-timer settings (3, 5, 10 seconds), anti-shake functionality, and the built-in flash.

## 6.5. Special Shooting Modes

The camera offers various modes to enhance your creative photography and videography.

- **Portrait:** Optimizes settings for capturing subjects with a pleasing background blur.
- **Night:** Enhances low-light performance for clearer night shots.

- **Time-lapse:** Captures a series of photos over time and combines them into a sped-up video.
- **Slow Motion:** Records video at a higher frame rate for slow-motion playback.
- **Filter:** Apply various creative filters directly to your photos and videos.
- **Standard Photo/Video:** Default modes for general shooting.
- **Landscape:** Optimizes settings for wide scenic views.

## Multiple Modes to Meet All Your Need

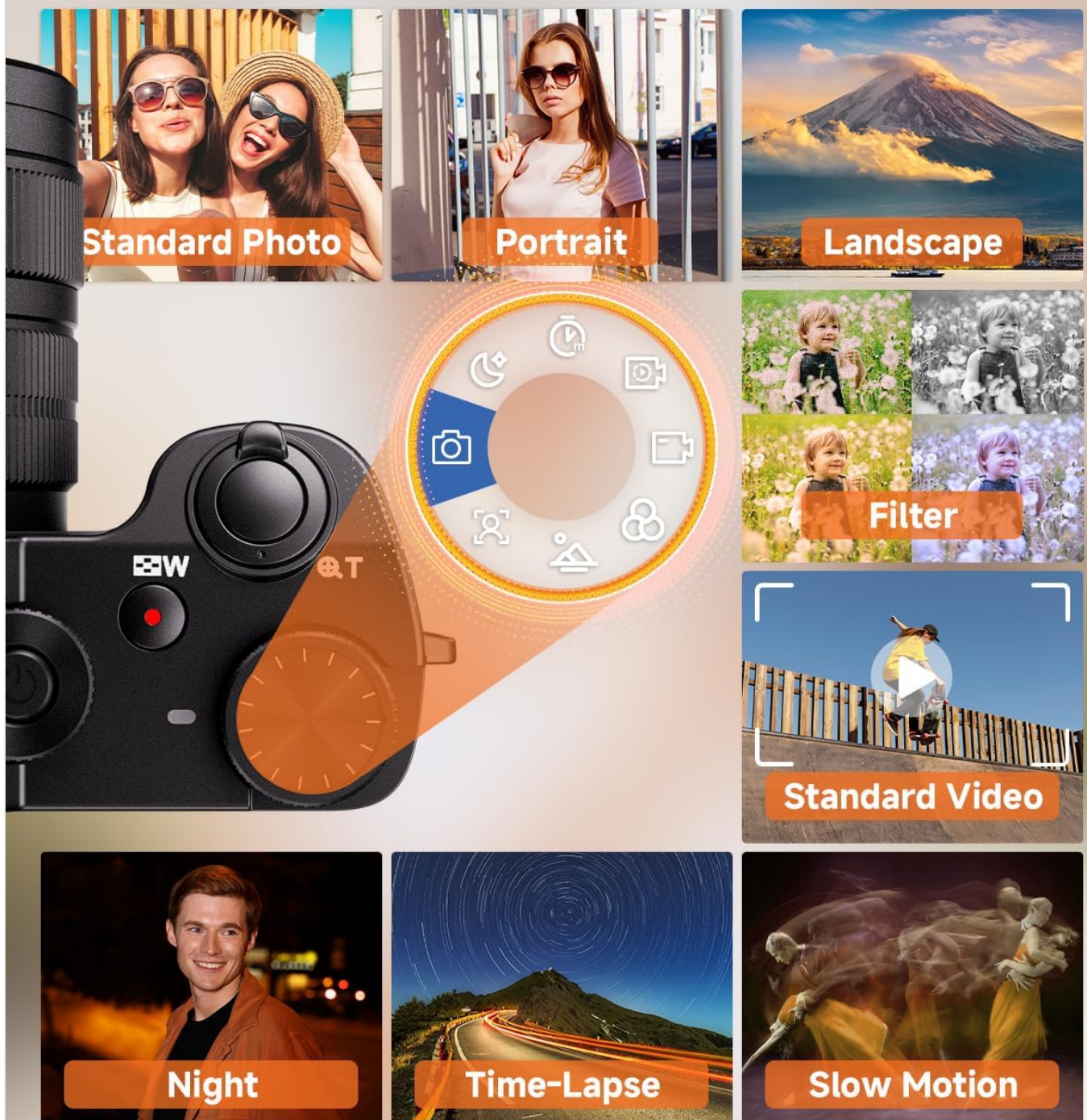


Image: This image displays a selection of the camera's multiple shooting modes, including Standard Photo, Portrait, Landscape, Filter,

## 6.6. Multifunctional Use

- **Webcam Function:** Connect the camera to your computer via USB-C to use it as a webcam for video calls and live streaming on platforms like TikTok, YouTube, and Facebook.
- **HDMI Output:** Connect the camera to a TV or monitor using the HDMI cable to view your photos and videos on a larger screen.
- **File Transfer:** Easily transfer photos and videos to your computer using the provided USB-C cable.

# 5K: Brilliant Ultra HD quality for video



Image: This graphic demonstrates the camera's versatility, showing its use for live-streaming, vlogging, video calls, and connecting to a TV via HDMI for content playback.

## 7. MAINTENANCE

- **Cleaning the Camera Body:** Use a soft, lint-free cloth to wipe the camera body. For stubborn dirt, slightly dampen the cloth with water. Avoid using alcohol or chemical cleaners.

- **Cleaning the Lens:** Use a lens brush or a blower to remove dust. For smudges, use a specialized lens cleaning cloth and lens cleaning solution. Do not touch the lens surface with your fingers.
- **Cleaning the Screen:** Use a soft, dry microfiber cloth to gently wipe the touch screen.
- **Storage:** When not in use for extended periods, store the camera in a cool, dry place, away from direct sunlight and extreme temperatures. Remove the battery if storing for a long time.

## 8. TROUBLESHOOTING

If you encounter issues with your camera, refer to the following common problems and solutions:

Problem	Possible Cause / Solution
Camera does not power on.	Battery may be depleted. Ensure the battery is fully charged and correctly inserted.
Cannot take photos/record videos.	MicroSD card may be full or not inserted correctly. Check card status or replace. Ensure sufficient battery charge.
Images are blurry.	Ensure the lens is clean. Check focus settings (Autofocus mode). Use anti-vibration function or a tripod if necessary.
Touch screen is unresponsive.	Restart the camera. Ensure the screen is clean and dry.
Camera freezes.	Remove and reinsert the battery to perform a hard reset.

## 9. SPECIFICATIONS

Feature	Detail
Model Name	Powerflex X8 Dual Lens
Manufacturer	Rollei
Item Model Number	11216
Photo Resolution	Up to 64 Megapixels
Video Resolution	5K Ultra HD
Optical Zoom	8x
Display	3.6 inch HD Touch Screen
Photo Sensor Technology	CMOS
Supported File Formats	JPEG (photos), MP4 (videos)
Image Stabilization	Dual
Maximum Aperture	1.8 f
Maximum Focal Length	80 Millimeters
Dimensions (approx.)	12.7 x 8.3 x 7.3 cm (5 x 3.3 x 2.9 inches)

Feature	Detail
Weight (approx.)	383 g (0.84 lbs)
Battery	1 Nonstandard Battery (Rechargeable Lithium-Polymer)

## 10. WARRANTY AND SUPPORT





For warranty information and technical support, please refer to the warranty card included with your product or visit the official Rollei website. Keep your proof of purchase for warranty claims.

**Online Support:** [www.rollei.com/en/support](http://www.rollei.com/en/support) (Example link, actual link may vary)



© 2025 Rollei. All rights reserved. Information in this manual is subject to change without notice.

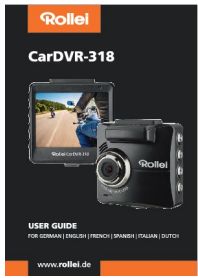
### Related Documents - Powerflex X8 Dual Lens

	<p><a href="#">Rollei Powerflex X8 Dual Lens User Manual</a></p> <p>Comprehensive user manual for the Rollei Powerflex X8 Dual Lens camera, covering setup, operation, features, and technical specifications. Learn how to capture stunning 5K video and high-resolution photos with this versatile digital camera.</p>
	<p><a href="#">Rollei Powerflex 10x Digital Camera User Manual</a></p> <p>Comprehensive user manual for the Rollei Powerflex 10x digital camera, detailing safety instructions, product features, setup, settings, operational modes, connectivity options, and maintenance procedures.</p>
	<p><a href="#">Rollei Pissarro DPF-880 Digital Photo Frame User Manual</a></p> <p>Comprehensive user manual for the Rollei Pissarro DPF-880 digital photo frame, covering setup, operation, technical specifications, safety guidelines, and disposal information.</p>
	<p><a href="#">Rollei Actioncam 40s Pro User Guide: Setup, Operation, and Features</a></p> <p>Explore the features and functionalities of the Rollei Actioncam 40s Pro with this official user guide. This comprehensive manual covers everything from initial setup and operation to advanced settings, waterproof use, and WiFi connectivity, ensuring you can capture high-quality footage in any adventure. Learn about technical specifications, safety guidelines, and maintenance from Rollei.</p>



[Rollei 35AF Schnellstartanleitung | Kompaktkamera Bedienung](#)

Schnellstartanleitung für die Rollei 35AF Kleinbildkamera. Lernen Sie, wie Sie Film laden, Fotos aufnehmen und Ihre Kamera schnell und einfach bedienen.



[Rollei CarDVR-318 User Guide](#)

Comprehensive user guide for the Rollei CarDVR-318 drive recorder, covering features, installation, operation, and specifications.