

IHFMPFKJ B03031223

IHFMPFKJ B03031223 Refrigerator Power Control Board Instruction Manual

1. INTRODUCTION

This manual provides essential information for the safe and effective installation, operation, and maintenance of the IHFMPFKJ B03031223 Refrigerator Power Control Board. This board is designed as a replacement part for compatible refrigerator models, including Hisense BCD-465WY/HC2 and BACCO BNT-15S.

2. SAFETY INFORMATION

WARNING: Risk of Electric Shock. Always disconnect power before servicing.

- Always disconnect power to the refrigerator by unplugging it or turning off the circuit breaker before attempting any installation or repair.
- Installation should only be performed by qualified personnel to prevent electrical shock, personal injury, or damage to the appliance.
- Observe all warning labels on the control board, especially areas marked "HIGH VOLTAGE".
- Wear appropriate personal protective equipment (PPE), such as insulated gloves and safety glasses, during installation.

3. PRODUCT OVERVIEW

The B03031223 Refrigerator Power Control Board is a critical electronic component responsible for managing the refrigerator's power distribution and operational functions. It serves as a direct replacement for faulty or aging control boards.

Key Features:

- **Restores Functionality:** Solves problems caused by aging and damage of the main board, returning the refrigerator to normal preservation and refrigeration functions.

- **Enhances Stability:** Effectively reduces frequent start-ups and abnormal shutdowns, maintaining stable operation and reducing the risk of damage to other components.
- **Reduces Noise:** Optimizes the motor drive program to minimize abnormal friction between components, resulting in quieter and more stable refrigerator operation.
- **Improves Responsiveness:** Enhances the refrigerator's response speed to temperature changes and operational instructions, quickly reaching set values and ensuring sensitive and smooth control.

Compatibility:

This control board is compatible with Hisense BCD-465WY/HC2 and BACCO BNTE-15S refrigerator models.

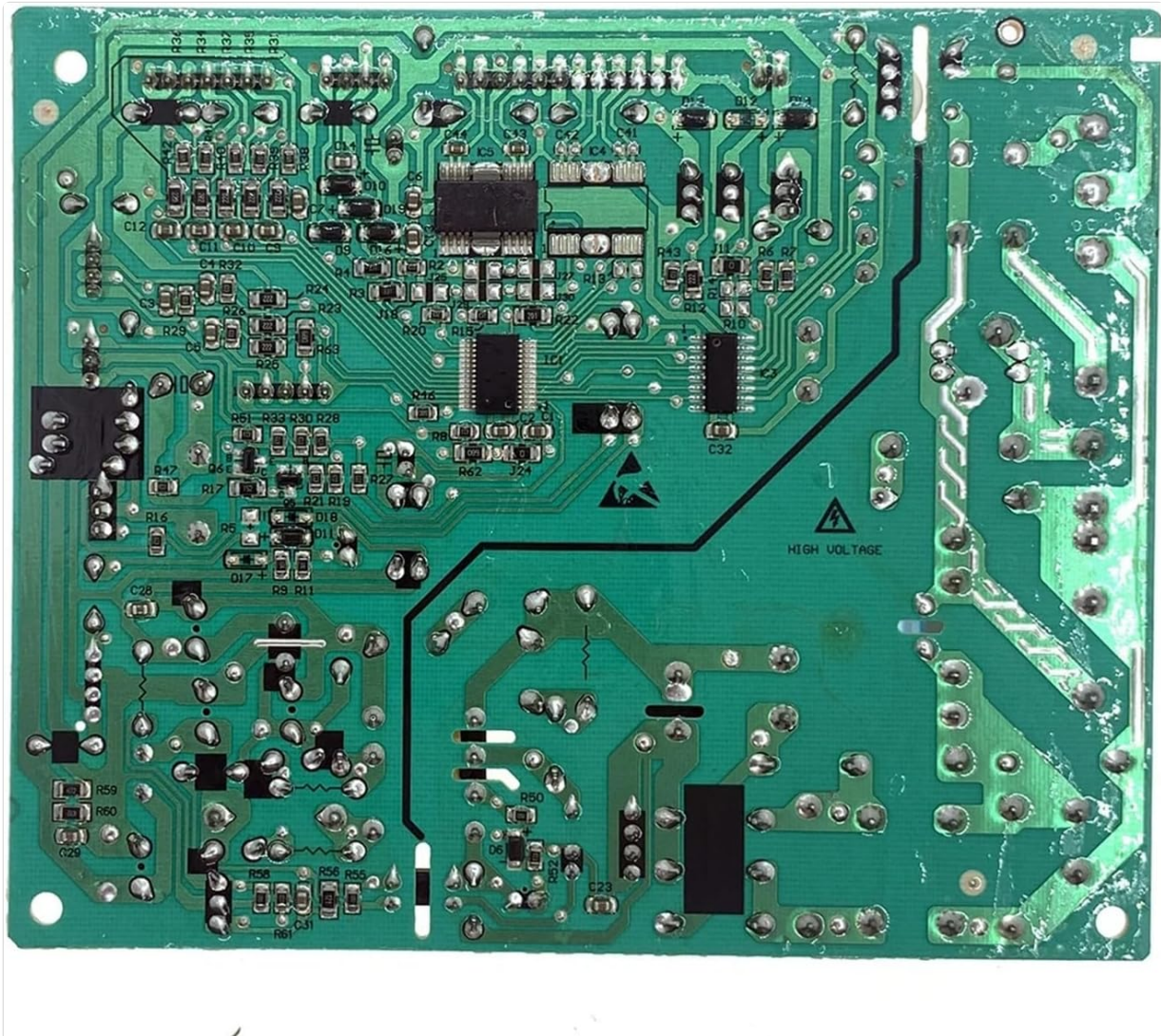


Figure 1: An overhead view of the green circuit board, showing various electronic components including integrated circuits, resistors, capacitors, and connection points. A 'HIGH VOLTAGE' warning is visible on the board.

4. SETUP AND INSTALLATION

Important: Ensure all safety precautions in Section 2 are followed before proceeding.

4.1. Preparation

- Unplug the refrigerator from the wall outlet to completely disconnect power.
- Gather necessary tools, which may include screwdrivers (Phillips and flathead), a multimeter, and a camera for documenting connections.

- Locate the existing control board within your refrigerator's housing. Refer to your refrigerator's service manual for exact location.

4.2. Removal of Old Board

- Carefully disconnect all wiring harnesses and connectors from the old control board. Take photos or label each connector to ensure correct re-connection.
- Unscrew or unclip the old board from its mounting brackets or housing.

4.3. Installation of New Board

- Align the new B03031223 control board with the mounting points.
- Secure the board with the appropriate screws or clips.
- Reconnect all wiring harnesses and connectors to their correct positions on the new board. Ensure all connections are firm and secure. Refer to your documentation photos if needed.

4.4. Post-Installation

- Double-check all connections to ensure they are properly seated and secure.
- Carefully close any access panels or covers that were removed.
- Restore power to the refrigerator by plugging it back in or turning on the circuit breaker.
- Monitor the refrigerator's operation for proper function, including cooling, fan operation, and display (if applicable).

5. OPERATING PRINCIPLES

Once correctly installed and powered, the B03031223 control board automatically manages the refrigerator's core functions. It acts as the central processing unit for the appliance, ensuring optimal performance.

- **Temperature Regulation:** The board continuously monitors internal temperature sensors and activates the compressor and fan as needed to maintain the user-set temperature.
- **Defrost Cycles:** It initiates and controls automatic defrost cycles to prevent ice buildup on the evaporator coils, ensuring efficient cooling.
- **Power Management:** The board efficiently distributes power to various components, including the compressor, fans, lights, and heaters, optimizing energy consumption.
- **System Monitoring:** It monitors the status of various components and can trigger error codes or warnings if a malfunction is detected (depending on refrigerator model capabilities).

6. MAINTENANCE

The B03031223 Refrigerator Power Control Board is designed for long-term reliability and requires minimal direct maintenance. However, general care for your refrigerator can help prolong the life of all its components, including the control board.

- **Keep Area Clean:** Ensure the area around the control board (typically in the back or top of the refrigerator) is kept clean and free from dust, debris, and pet hair to prevent overheating.
- **Ensure Ventilation:** Maintain proper clearance around the refrigerator to allow for adequate airflow, which is crucial for the overall cooling system and component longevity.
- **Avoid Moisture:** Prevent any liquids from coming into contact with the control board or other electrical

components.

- **Stable Power Supply:** Ensure the refrigerator is connected to a stable power supply. Power surges can potentially damage electronic components.

7. TROUBLESHOOTING

If your refrigerator exhibits issues after installing the B03031223 control board, consider the following troubleshooting steps. Always disconnect power before inspecting internal components.

- **Refrigerator Not Cooling/Heating Properly:**
 - Verify all wiring connections to the new board are secure and correctly seated.
 - Ensure the board is correctly installed and not loose.
 - Check if other components (e.g., compressor, fan, thermostat) are functioning correctly.
- **Frequent Start-ups/Abnormal Shutdowns:**
 - This board is designed to resolve these issues. If they persist, it may indicate a problem with another component or an incorrect installation.
 - Consult a qualified technician for further diagnosis.
- **Unusual Noise:**
 - While the board optimizes motor drive to reduce noise, persistent unusual noises may indicate issues with other mechanical components (e.g., compressor, evaporator fan, condenser fan).
 - Inspect fans for obstructions or wear.
- **No Power to Refrigerator:**
 - Confirm the refrigerator is plugged into a working outlet.
 - Check your home's circuit breaker panel to ensure the breaker for the refrigerator has not tripped.
 - Re-check all power connections to the control board.

For complex issues or if troubleshooting steps do not resolve the problem, professional diagnosis and repair are recommended.

8. SPECIFICATIONS

Attribute	Specification
Part Number	B03031223
Brand	IHFMPFKJ
Compatible Models	Hisense BCD-465WY/HC2, BACCO BNTE-15S
Item Weight	1.76 ounces
Package Dimensions	0.39 x 0.39 x 0.39 inches
Date First Available	May 13, 2025

9. WARRANTY AND SUPPORT

For product support, technical assistance, or warranty inquiries regarding your IHFMPFKJ B03031223 Refrigerator Power Control Board, please contact the seller directly through your purchase platform. Refer to your original purchase documentation for specific seller contact information and warranty terms.