

Hiseeu 8HB615

Hiseeu 16CH 4K NVR Kit 8HB615 Wi-Fi Pro Security Camera System Instruction Manual

Model: 8HB615

1. PRODUCT OVERVIEW

The Hiseeu 16CH 4K NVR Kit 8HB615 Wi-Fi Pro Security Camera System provides comprehensive surveillance for indoor and outdoor environments. This system includes an 8-channel 4K Network Video Recorder (NVR) with a pre-installed 3TB hard drive and 8 units of 5MP cameras. Designed for ease of use, the cameras support dual-band 2.4GHz/5GHz Wi-Fi connectivity, offering flexible installation options up to 100ft. The system features 24/7 recording capabilities, advanced motion detection with AI human recognition, night vision, and one-way audio for enhanced security monitoring.



Image 1.1: Overview of the Hiseeu 16CH 4K NVR Kit 8HB615 Wi-Fi Pro Security Camera System.

2. WHAT'S IN THE BOX

Upon unboxing your Hiseeu security camera system, you will find the following components:

- 8x 5MP Cameras
- 1x 4K NVR (Network Video Recorder)
- 1x User Manual

- Screws for installation

Video 2.1: This video demonstrates the unboxing and contents of a Hiseeu 4K PoE 8 Camera System, similar to the Wi-Fi Pro model.

3. SETUP GUIDE

3.1 Initial Connection and Power-Up

The Hiseeu Wi-Fi Pro system is designed for easy setup with auto-pairing functionality. The cameras and NVR are pre-paired at the factory, allowing for a true plug-and-play experience.

1. Connect the NVR to a power source using the provided 12V 2A power supply.
2. Connect the NVR to a monitor or TV using an HDMI or VGA cable.
3. Connect each camera to its individual 12V 1A power supply.
4. Ensure the NVR antennas are positioned vertically for optimal signal reception.

Auto Pair, True Plug and Play

2.4GHz wireless transmission,
the camera and NVR are paired before shipping.

- **12V 1A** Power Supply for Camera
- **12V 2A** Power Supply for NVR



Image 3.1: Auto-pairing and power connections for the NVR and cameras.

3.2 Network Configuration

For remote viewing and control via the mobile application, the NVR needs to be connected to your home network. The system supports dual-band 2.4GHz/5GHz Wi-Fi connectivity.

- **Wired Connection:** Connect the NVR to your router using an Ethernet cable.
- **Wireless Connection:** Access the NVR's system settings on the connected monitor to configure Wi-Fi.

No Monthly Fee

The security camera system pre-installed one 3T hard drive, no need extra fee

(cloud storage incurs extra fee, but is optional)



Image 3.2: Various connection methods for local and remote access.

3.3 Camera Installation

The cameras are IP66 waterproof, making them suitable for both indoor and outdoor use. They are designed to withstand heavy snow, high winds, and extreme temperatures (-13°F to 122°F).

1. Choose a suitable location for each camera, ensuring optimal viewing angles and Wi-Fi signal strength.
2. Use the provided screws and anchors (if mounting into drywall) to securely mount the cameras. A template is included to assist with screw placement.
3. Adjust the camera's angle as needed.

Outdoor IP66 Waterproof Camera

Working temperature: -25°C to 50°C (-13°F to 122°F)



Image 3.3: Outdoor IP66 Waterproof Camera.

Video 3.1: This video provides instructions on how to set up a Hiseeu security camera system.

4. OPERATING INSTRUCTIONS

4.1 Live View and Recording

The system supports 24/7 continuous recording, motion-triggered recording, or customized recording schedules. The 3TB hard drive offers over 45 days of continuous 24-hour recording.

- **Local View:** Connect the NVR to a monitor/TV for direct viewing without internet.
- **Remote View:** Use the EseeCloud app on your smartphone, tablet, or PC to view live feeds and playback recordings from anywhere.

Focus on Key Area

Freedom for adjust the detection area, focus on that important area you choose

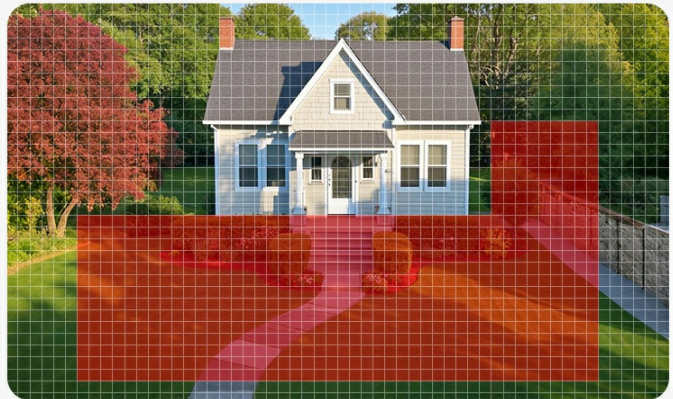


Image 4.1: Live view and 24/7 recording interface.

4.2 Motion Detection and AI Human Detection

The system is equipped with advanced motion detection and AI human detection to provide accurate alerts and reduce false alarms.

- **Smart Detection:** Distinguishes people from other moving objects (like pets or shadows) to send alerts only for real threats.
- **Instant Notifications:** Receive immediate alerts on your phone when motion or human presence is detected.
- **Customizable Detection Areas:** Adjust specific areas for motion detection to focus on key zones and avoid unnecessary alerts.

Humanoid Motion Detection, App Push & Email Alert



Humanoid
Motion



App Push



Email Alert



EseeCloud

now

Device-object movement

Image 4.2: Humanoid Motion Detection and App Push Alerts.

4.3 Night Vision and One-Way Audio

The 5MP cameras capture sharp details even in darkness, eliminating blind spots. The system also includes one-way audio functionality.

- **Clear Night Vision:** Provides clear black and white or full-color night vision, depending on settings and ambient light.
- **One-Way Audio:** Listen in real-time through the camera's microphone without revealing your presence. This feature allows for discreet monitoring.

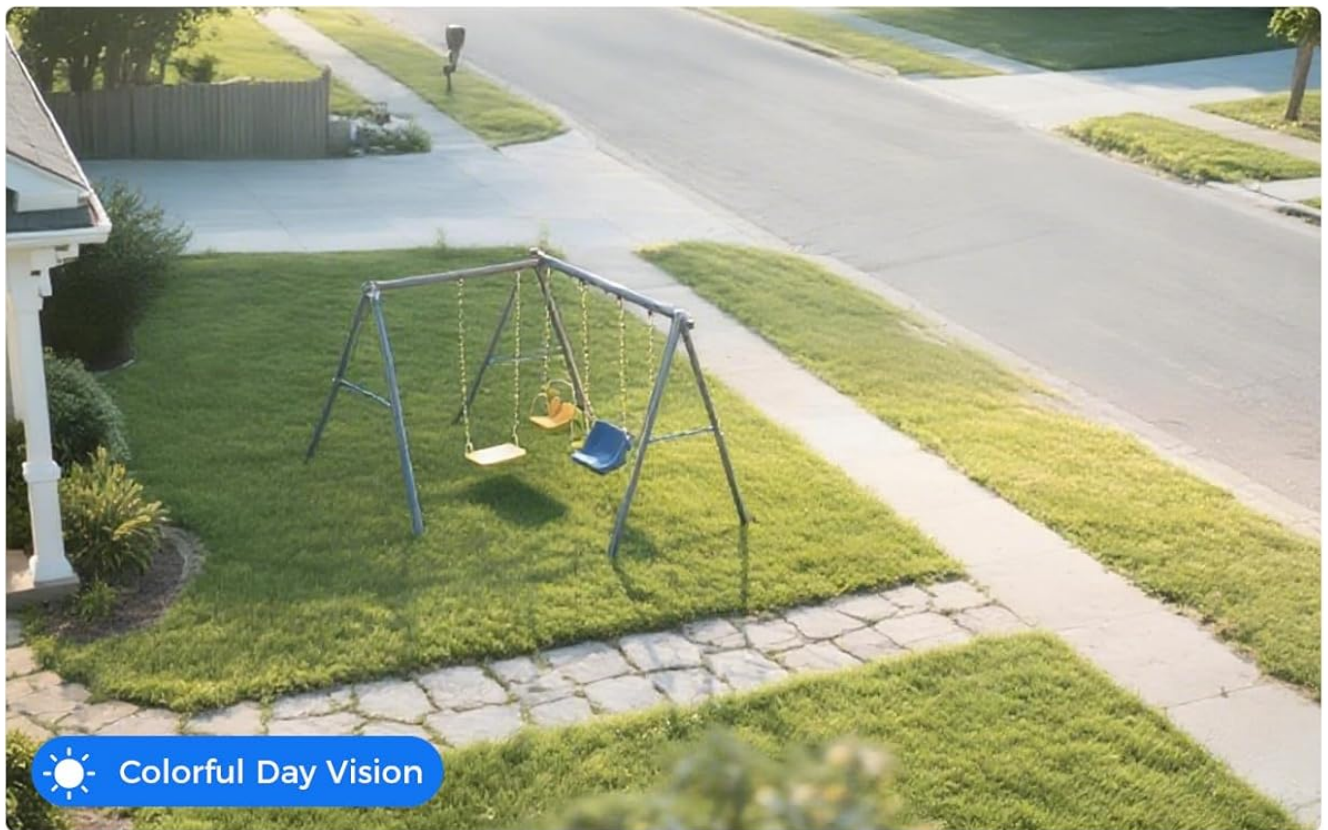


Image 4.3: Comparison of Colorful Day Vision and Clear Night Vision.

One-way Audio Function

Support hear the voice from monitor or Eseecloud app, but can't make conversation.

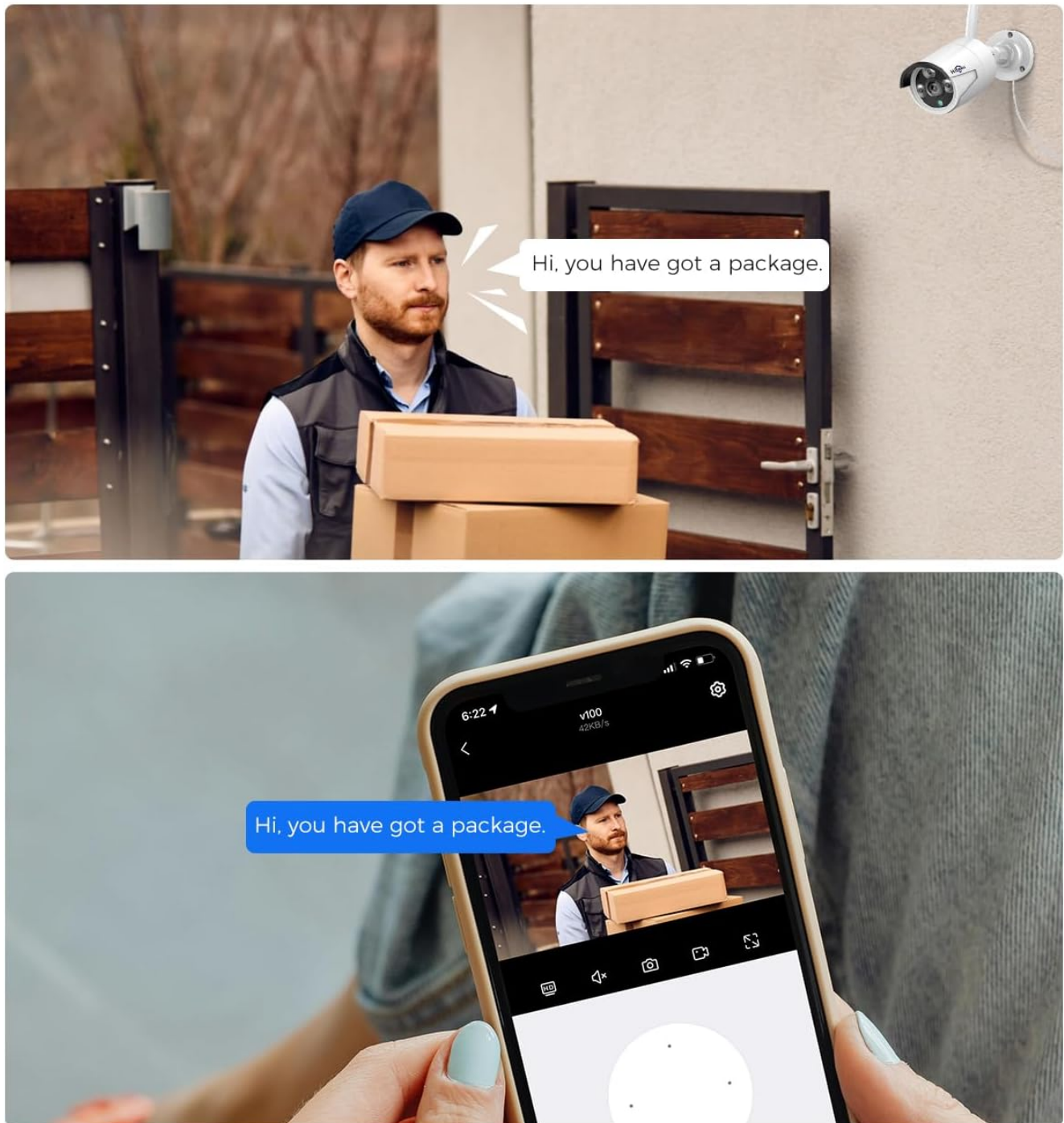


Image 4.4: One-Way Audio Functionality.

5. KEY FEATURES

- **Local & Remote Control:** Supports local viewing and control without Wi-Fi, and remote access via dual-band 2.4GHz/5GHz Wi-Fi.
- **24/7 Wired Power:** Cameras and NVR are corded powered, ensuring continuous 24/7 recording without battery concerns.
- **3TB Local Storage:** Pre-installed 3TB hard drive provides extensive local storage, eliminating monthly cloud

fees. H.265+ bandwidth optimization reduces storage needs by 50%.

- **Expandable 16-Channel System:** The NVR supports expansion up to 16 channels, allowing for scalability to secure larger properties.
- **IP66 Waterproof:** Cameras are built to withstand harsh weather conditions, suitable for all-season outdoor use.
- **Motion Sensor/AI Human Detection:** Intelligent detection distinguishes humans from other movements, minimizing false alarms.
- **Night Vision & One-Way Audio:** High-resolution cameras provide clear night vision, and one-way audio allows for discreet listening.
- **Instant Notification & Video Playback:** Receive immediate alerts on your phone and easily review recorded footage.

Video 5.1: This video highlights a key feature of the Hiseeu security camera system.

6. SPECIFICATIONS

Feature	Detail
Brand	Hiseeu
Model Number	WK6-8HB615-CT
Connectivity Technology	2.4G/5G Wireless WiFi
Video Capture Resolution	4K
Special Features	Local & Remote View/Control, DC12V Corded Powered, Motion Sensor, Night Vision, One-Way Audio, No Monthly Fee, 24/7 Recording, Waterproof
Number of Channels	16
Memory Storage Capacity	3 TB
Power Source	DC12V Corded Electric
Item Dimensions L x W x H	6 x 10 x 10 inches
Recommended Uses	Indoor, Outdoor
Compatible Devices	Laptops, Personal Computers, Smartphones, TV, Tablets
Low Light Technology	Night Vision
Night Vision Range	65 Feet

Frame Rate	24, 30
Recording Mode	Event, Schedule, 24/7 Continuous Recording, Best Recording
Hardware Interface	802.11 ac/b/g/n
Lens Type	Fixed
Video Input	BNC, RJ45

7. MAINTENANCE

Regular maintenance ensures optimal performance and longevity of your security system.

- **Camera Cleaning:** Periodically clean camera lenses with a soft, damp cloth to remove dust and debris that may obstruct vision.
- **Connection Check:** Ensure all power and network cables are securely connected to prevent signal loss or power interruptions.
- **Software Updates:** Check for and install any available firmware updates for the NVR and cameras to enhance security and functionality.
- **Hard Drive Health:** Monitor the health of the 3TB hard drive through the NVR's system settings to ensure continuous recording.

8. TROUBLESHOOTING

If you encounter issues with your Hiseeu security camera system, refer to the following common troubleshooting steps:

- **No Video Feed:**
 - Check if the camera is powered on and its power adapter is functioning.
 - Ensure the camera is within range of the NVR's Wi-Fi signal.
 - Verify the NVR is properly connected to the monitor/TV.
- **No Remote Access:**
 - Confirm the NVR is connected to the internet (wired or Wi-Fi).
 - Check your router's internet connection.
 - Ensure the EseeCloud app is updated to the latest version.
- **Frequent False Alarms:**
 - Adjust the motion detection sensitivity in the NVR or app settings.
 - Utilize the AI Human Detection feature to filter out non-human movements.
 - Define specific detection zones to exclude areas with constant, irrelevant motion.
- **Poor Night Vision:**
 - Ensure the camera lens is clean and free from obstructions.
 - Check for any strong light sources directly facing the camera at night, which can interfere with infrared.



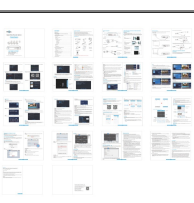

9. WARRANTY & SUPPORT

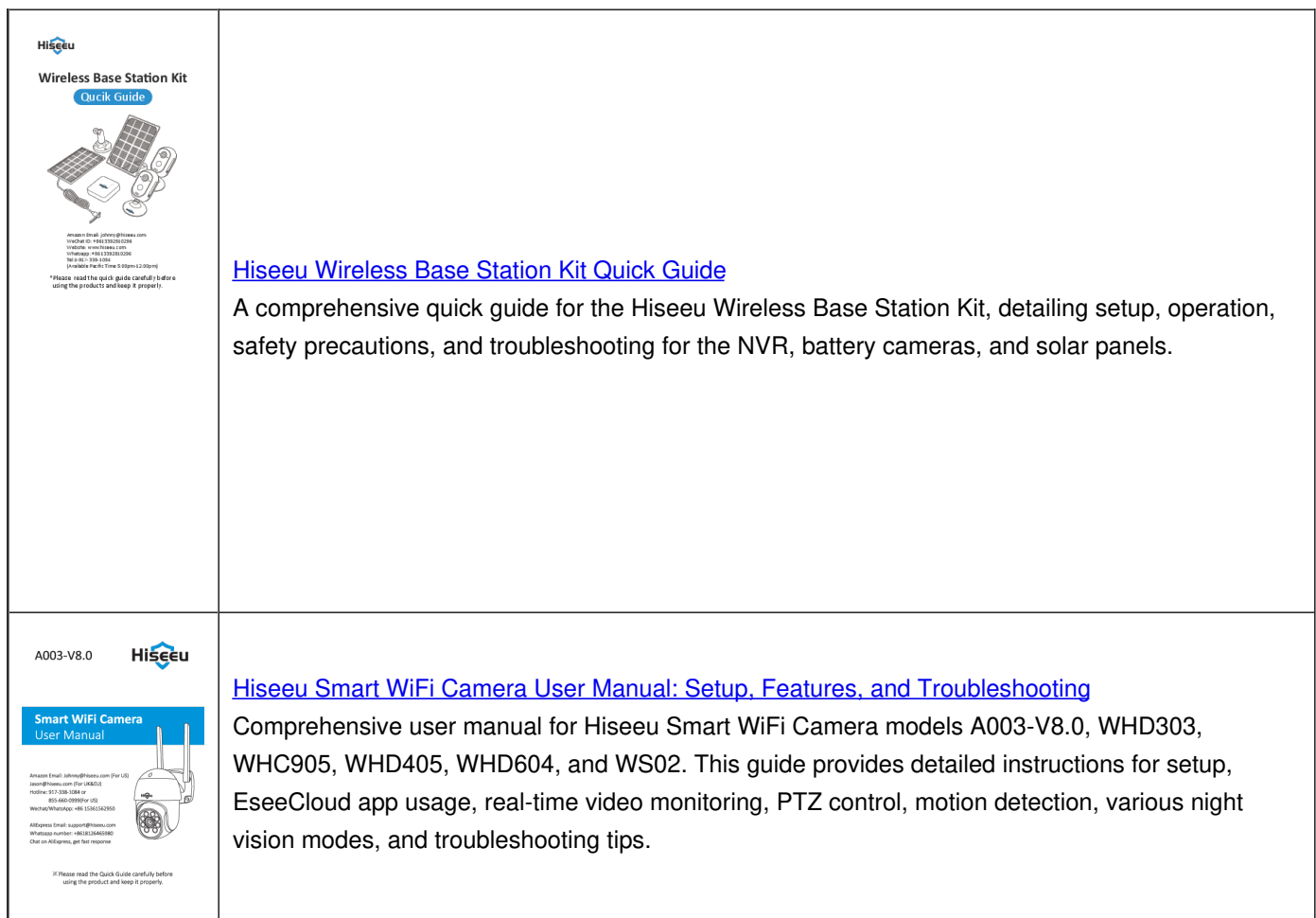
Hiseeu offers a one-year warranty and hassle-free returns within three months of purchase for all Hiseeu camera systems. For any inquiries or technical assistance, our dedicated customer support team is committed to responding promptly within 12 hours via email.

Please refer to the contact information provided in your quick guide or on the official Hiseeu website for support.

Video 9.1: This video demonstrates how customers use a Hiseeu security camera system, providing practical insights into its functionality.

Related Documents - 8HB615

	<p>Hiseeu WiFi CCTV Kits Quick Guide A017-V5.0</p> <p>Quick guide for Hiseeu WiFi CCTV Kits, model A017-V5.0. Provides setup, safety, and troubleshooting information for Hiseeu surveillance systems.</p>
	<p>Hiseeu A018-V1.0 Smart WiFi Camera User Manual</p> <p>Comprehensive user manual for the Hiseeu A018-V1.0 Smart WiFi Camera, covering setup, features, functions, and troubleshooting for optimal use.</p>
	<p>Hiseeu Security Camera System User Manual and Guide</p> <p>Comprehensive user manual for Hiseeu Security Camera Systems, detailing features like 5MP/1080p resolution, PoE, 2-way audio, face/human detection, night vision, motion alerts, remote access, and H.265+ recording. Includes setup and connectivity information.</p>
	<p>Hiseeu Wireless Network Video Recorder System User Manual</p> <p>User manual for the Hiseeu Wireless Network Video Recorder (NVR) System, covering setup, features, troubleshooting, and support for various Hiseeu CCTV kits.</p>

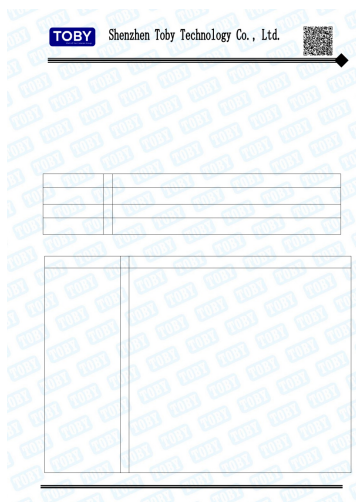


Documents - Hiseeu – 8HB615

[Hiseeu Surveillance Camera Systems and NVRs - Product Catalog](#)

Comprehensive catalog of Hiseeu's advanced surveillance solutions, including full-color IP cameras, NVRs, AHD systems, wireless cameras, and 4G solar cameras, featuring detailed specifications and product kits.

lang:en score:27 filesize: 5.29 M page count: 42 document date: 2025-02-10



Maximum Permissible Exposure Evaluation Report for Shenzhen Hiseeu NVR TZ-NVR10VP

FCC MPE evaluation report for Shenzhen Hiseeu NVR model TZ-NVR10VP (FCC ID: 2A2DZ-TZ-NVR10VP). Details RF exposure compliance, including standalone and simultaneous transmission MPE calculations for 2.4GHz and 5GHz WiFi bands.

lang:en score:25 filesize: 798.13 K page count: 9 document date: 2024-08-30



[pdf] Declaration of Conformity Test Report

Test Report 2 4G WiFi REALTEK 8192FC Shenzhen Hiseeu Technolgy Co Ltd TZ NVR10VP NVR
2A2DZ 2A2DZTZNVR10VP tz nvr10vp

Shenzhen Toby Technology Co., Ltd. Report No.: TBR-C-202407-0307-22 Page: 1 of 45 RF Test Report ... , WK-4HD303-AT, : WK-4HBC25-AT, WK-4HB615-EG, WK-12V-4HB613-CT, WK-4HB613-AT, WK-10V-4HB615B-AT, WK-8HB615B-CT, WK-12V-4HD205-CT, WK-4TD714-AT, WK-2TD714-EG, WK-10V-4TD714-AT, WK-10V-2TD714-EG, WK-8HB...

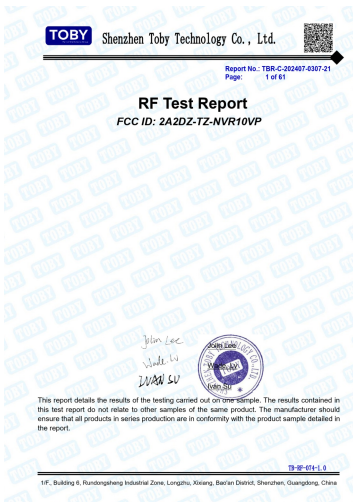
lang:en score:18 filesize: 2.08 M page_count: 45 document date: 2024-08-30



Shenzhen Hiseeu Technolgy NVR RF Test Report TZ-NVR10VP

This RF test report details the compliance testing for the Shenzhen Hiseeu Technolgy NVR, model TZ-NVR10VP, conducted by Shenzhen Toby Technology Co., Ltd. It covers FCC ID 2A2DZ-TZ-NVR10VP and various wireless standards.

lang:en score:18 filesize: 2.28 M page_count: 50 document date: 2024-08-30



Shenzhen Hiseeu Technolgy NVR RF Test Report - FCC Compliance

This RF test report details the compliance testing of Shenzhen Hiseeu Technolgy's NVR (Network Video Recorder) model TZ-NVR10VP, conducted by Shenzhen Toby Technology Co., Ltd. according to FCC Part 15 Subpart E standards.

lang:en score:17 filesize: 2.42 M page_count: 61 document date: 2024-08-30