

Manuals.plus /

- › Aovly /
- › Aovly A12 Handheld Mini Sewing Machine User Manual

Aovly A12

Aovly A12 Handheld Mini Sewing Machine User Manual

Model: A12

1. INTRODUCTION

Thank you for choosing the Aovly A12 Handheld Mini Sewing Machine. This compact and portable sewing machine is designed for quick repairs, DIY projects, and light sewing tasks. Please read this manual thoroughly before operating the machine to ensure safe and efficient use.



Image: The Aovly A12 Handheld Mini Sewing Machine being used for a sewing project.

2. SAFETY INSTRUCTIONS

- Keep the machine away from children.
- Do not operate the machine with wet hands.
- Always turn off the machine and disconnect the power supply before cleaning or performing maintenance.
- Use only the recommended power sources (USB or AA batteries).
- Do not attempt to sew materials thicker than 1.5 mm.
- Ensure the needle is properly installed and secure before use.

How to use.

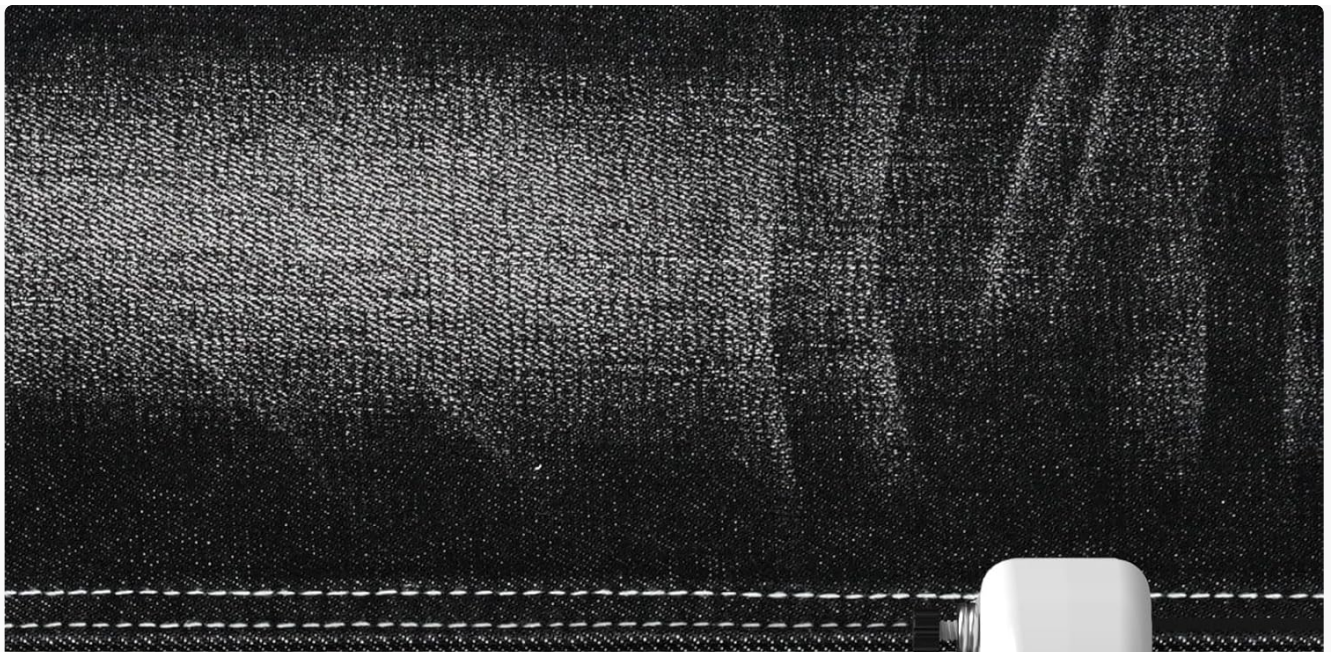


Image: The machine features a protective shell to secure moving parts.

3. PACKAGE CONTENTS

The Aovly A12 Handheld Mini Sewing Machine package includes:

- Aovly A12 Handheld Mini Sewing Machine
- Threading Needle
- Bobbins
- Spindle
- USB Cable (for power)



1



Fast Suitable for sewing long straight lines to save time

2



Slow Suitable for sewing in fabric corners more accurately

High gear and low gear

Image: The Aovly A12 machine shown with its essential accessories.

4. PRODUCT OVERVIEW AND COMPONENTS

Familiarize yourself with the main components of your Aovly A12 sewing machine:

- **ON/OFF Switch:** Activates or deactivates the machine.
- **Tightening and Loosening Knob:** Adjusts the tension of the incoming thread. Proper tension prevents thread breakage or failed stitching.
- **Needle Raising Knob:** Allows you to move the needle up or down. Adjust to its highest position when placing fabric or threading.
- **Stitching Area:** The designated space where fabric is placed for sewing.
- **Handle:** Ergonomically designed for a comfortable grip during operation.



Image: Key components of the Aovly A12 Handheld Mini Sewing Machine.

How to thread.



Image: The machine features a comfortable and secure handle.

5. SETUP

5.1 Power Supply

The Aovly A12 supports two power supply modes:

- **USB Power:** Connect the provided USB cable to the Type-C port on the left side of the machine and to a

suitable USB power source (e.g., wall adapter, power bank).

- **Battery Power:** Insert four AA batteries into the battery compartment on the right side of the machine. Ensure correct polarity.

Attention: Do not use this product to charge rechargeable batteries. Select only one power supply mode at a time.

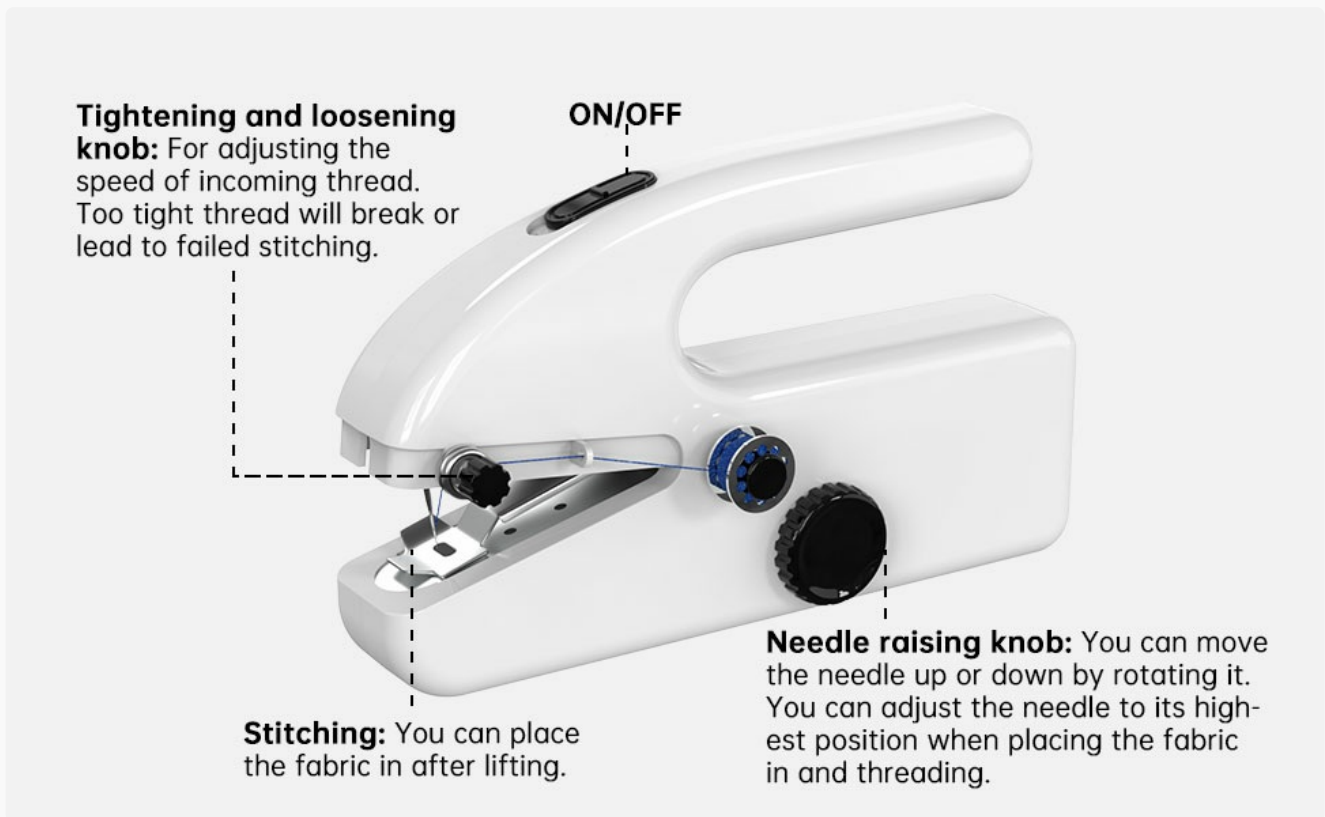


Image: Powering the machine via USB or AA batteries.

⚠ Reminding

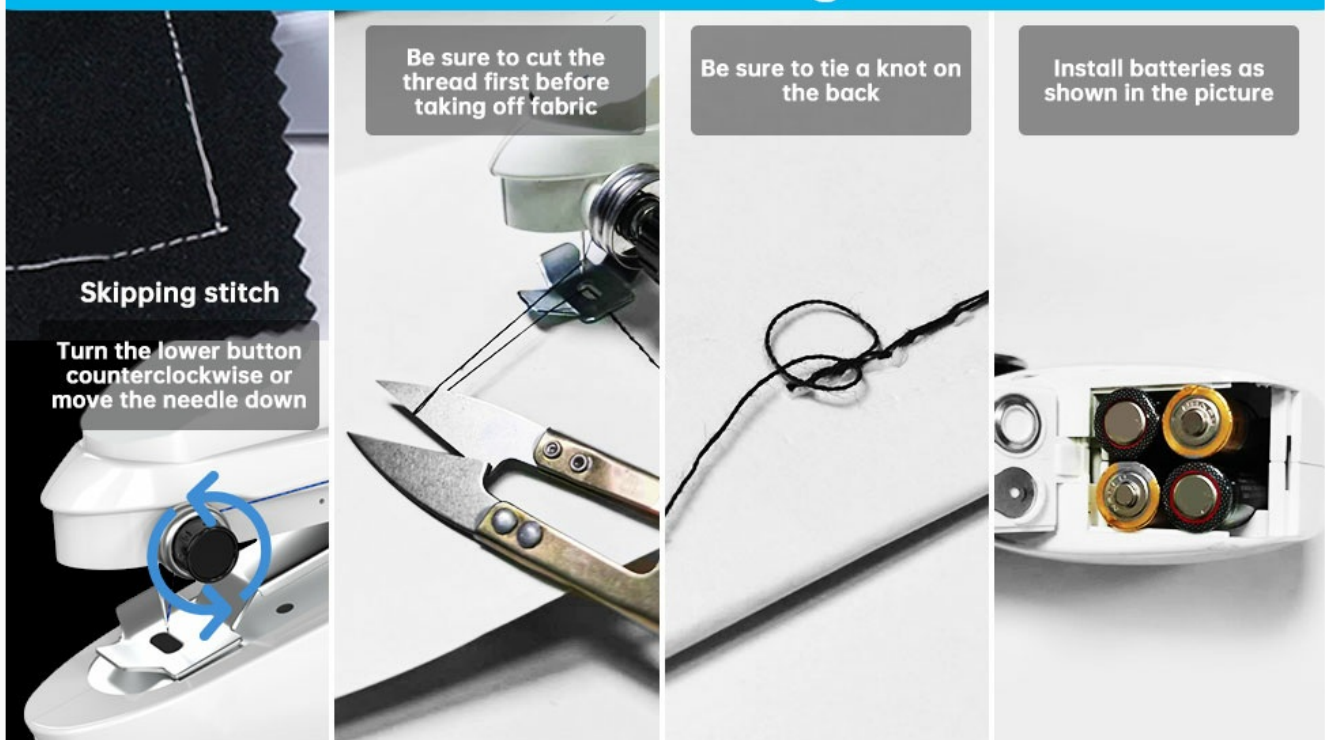


Image: Detailed view of the power input ports.

5.2 Threading the Machine

Follow these steps to properly thread your sewing machine:

1. Place the thread bobbin onto the spindle.
2. Guide the thread through the first thread guide.
3. Pass the thread through the tension disc.
4. Thread the needle from front to back.
5. Pull a few inches of thread through the needle eye.

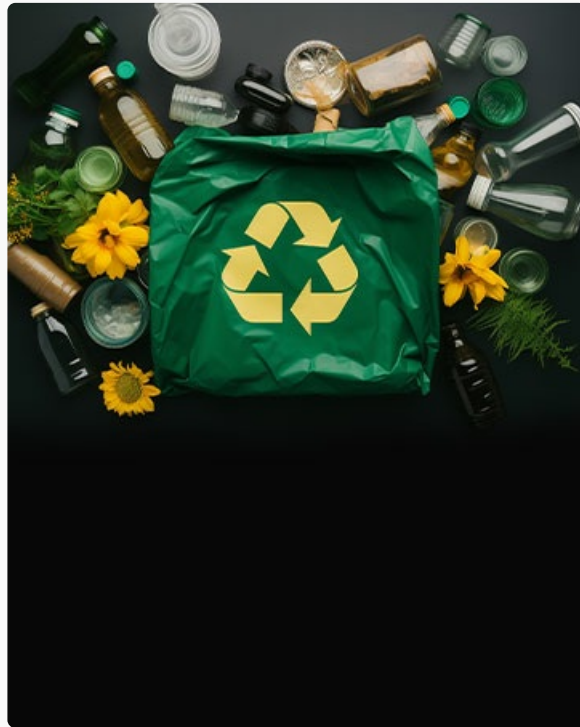


Image: Step-by-step guide for threading the machine.

6. OPERATING INSTRUCTIONS

6.1 Preparing to Sew

1. Ensure the machine is powered on.
2. Use the needle raising knob to lift the needle to its highest position.
3. Carefully slide the fabric under the presser foot, aligning the desired stitching line with the needle.
4. Lower the needle into the fabric by rotating the needle raising knob.

6.2 Stitching

1. Press the ON/OFF switch to start sewing.
2. Gently guide the fabric through the machine. The machine will feed the fabric automatically.
3. To stop sewing, release the ON/OFF switch.
4. After stitching, lift the needle, remove the fabric, and cut the thread, leaving a tail.
5. Tie a knot at the end of the thread on the back of the fabric to secure the stitch.



Image: Step-by-step guide for operating the machine.



Powered by USB



**Powered by four
AA batteries**



(extra purchase of batteries is needed)

Image: Demonstrating the machine in active use.

6.3 Speed Adjustment

The machine offers two speed settings:

- **Fast Speed:** Suitable for sewing long, straight lines.
- **Slow Speed:** Ideal for more accurate stitching, especially around fabric corners or intricate details.



Image: Speed settings for different sewing needs.

6.4 Suitable Materials

The Aovly A12 is suitable for a variety of fabrics with a thickness of up to 1.5 mm, including:

- Modal
- Cotton
- Mixed Yarn
- Chemical Fiber
- Denim Fabric
- Flax



Image: Examples of fabric types compatible with the machine.

7. MAINTENANCE

Regular maintenance ensures the longevity and optimal performance of your sewing machine:

- **Cleaning:** Periodically clean lint and dust from the needle area and feed dogs using a small brush.
- **Needle Replacement:** Replace bent or dull needles to prevent skipped stitches and fabric damage.
- **Storage:** Store the machine in a dry, clean place when not in use.

8. TROUBLESHOOTING

Here are some common issues and their solutions:

Problem	Possible Cause	Solution
Skipped stitches	Incorrect needle position, dull needle, improper thread tension.	Ensure the needle is fully down. Replace the needle if dull. Adjust the tightening/loosening knob.
Thread breaks	Thread tension too tight, poor quality thread, needle bent.	Loosen the tightening/loosening knob. Use good quality thread. Replace the needle.
Machine not stitching	No power, incorrect threading.	Check power connection/batteries. Re-thread the machine carefully.
Fabric not feeding	Fabric too thick, improper placement.	Ensure fabric thickness is within limits (max 1.5mm). Guide fabric gently.

Important Reminders:

- Always cut the thread before taking off the fabric.
- Tie a knot on the back of the fabric to secure the stitch.
- Ensure batteries are installed correctly if using battery power.



Make dreams come true

Image: Visual reminders for common sewing practices and troubleshooting.

9. SPECIFICATIONS

- **Model Number:** A12
- **Brand:** Aovly
- **Product Dimensions:** 8.86 x 4.72 x 2.56 inches (22.5 x 12 x 6.5 cm)
- **Item Weight:** 15.2 ounces (0.43 Kilograms)
- **Material:** Metal, Plastic
- **Color:** White
- **Power Source:** DC (USB or 4x AA Batteries)
- **Maximum Fabric Thickness:** 1.5 mm

10. WARRANTY AND SUPPORT

Aovly is committed to providing quality products and customer satisfaction. For any questions, concerns, or support needs regarding your Aovly A12 Handheld Mini Sewing Machine, please refer to the contact information provided with your purchase or visit the official Aovly website. Please retain your proof of purchase for warranty claims.