



Manuals.plus /

› Dryhsip /

› Dryhsip 6-in-1 Hair Styler Set Instruction Manual

Dryhsip WT-661

Dryhsip 6-in-1 Hair Styler Set Instruction Manual

Model: WT-661 | Brand: Dryhsip

1. INTRODUCTION

This instruction manual provides comprehensive guidance for the safe and effective use of your Dryhsip 6-in-1 Hair Styler Set, Model WT-661. This versatile styling tool combines a high-speed hair dryer with multiple interchangeable attachments, allowing for various hair styling options including drying, curling, volumizing, and straightening. Please read this manual thoroughly before first use and retain it for future reference.

2. SAFETY INFORMATION

To ensure safe operation and prevent injury or damage, please adhere to the following safety guidelines:

- **Electrical Safety:** This appliance is equipped with an ALCI (Appliance Leakage Current Interrupter) plug for enhanced safety. Do not use near water. If the ALCI trips, unplug the device and allow it to dry completely before attempting to reset.
- **Temperature Control:** The styler features an NTC system and bimetallic thermal switches to prevent overheating. Always monitor the LED screen for real-time temperature readings. Use insulated gloves when handling hot attachments.
- **Ventilation:** Ensure the air intake and exhaust vents are clear of obstructions during operation to prevent overheating.
- **Storage:** Allow the appliance and attachments to cool completely before storing. Store in a dry place, out of reach of children.
- **Maintenance:** Do not attempt to disassemble or repair the appliance yourself. Refer all servicing to qualified personnel.
- **Legal Disclaimer:** Statements regarding dietary supplements have not been evaluated by the FDA and are not intended to diagnose, treat, cure, or prevent any disease or health condition.

3. PRODUCT COMPONENTS

The Dryhsip 6-in-1 Hair Styler Set includes the main unit and several interchangeable attachments designed for

various styling needs. Familiarize yourself with each component:



Figure 3.1: Complete Styler Set. This image displays the main styler unit and all included attachments: the curling wands, smoothing brush, round brush, and concentrator nozzle.



Figure 3.2: Styler Set in Packaging. The components are securely nested within the product's original packaging, demonstrating how they are received.

- **Main Styler Unit:** The core device housing the 110,000 RPM high-speed motor, control buttons, and LED display.
- **Curling Wands (Left & Right):** Two distinct attachments for creating curls, designed for automatic wrapping and styling.
- **Smoothing Brush:** Designed for straightening and smoothing hair, reducing frizz and enhancing shine.

- **Round Brush:** Ideal for volumizing and creating soft waves or inner buckle shapes.
- **Concentrator Nozzle:** Used with the main unit for precise airflow during drying.

4. SETUP

Before first use, ensure all components are present and undamaged. The Dryhsip 6-in-1 Hair Styler is designed for easy assembly.

1. **Unpack:** Carefully remove all components from the packaging.
2. **Inspect:** Check the main unit and all attachments for any visible damage. Do not use if any part is damaged.
3. **Attach Accessory:** Select the desired styling attachment. Align the attachment with the connection point on the main styler unit and push firmly until it clicks securely into place. Ensure it is fully seated to prevent detachment during use.
4. **Power Connection:** Plug the ALCI plug into a standard electrical outlet. Press the reset button on the ALCI plug if necessary.

5. OPERATING INSTRUCTIONS

The Dryhsip 6-in-1 Hair Styler offers precise control over temperature and airflow for optimal styling results.

5.1 General Operation

- **Power On/Off:** Press and hold the power button to turn the styler on or off.
- **Temperature Settings:** Use the temperature control buttons to adjust the heat level. The LED screen will display the real-time temperature (170°F-450°F). There are 3 heat modes suitable for fine/sensitive, normal, and curly/wavy hair.
- **Airflow Speed:** Adjust the airflow speed as needed. The styler features a powerful 1400W motor with up to 25m/s airflow.
- **Cold Shot Button:** Press the cold shot button to instantly deliver cool air, which helps to set your style and lock in curls without frizz.



Figure 5.1: Temperature and Speed Control. This diagram illustrates the recommended temperature ranges for different hair types and the available speed settings.

5.2 Using the High-Speed Hair Dryer

Attach the concentrator nozzle for focused drying. The high-speed motor significantly reduces drying time.

High-Speed Hair Dryer

3X Faster Drying

110,000 RPM
Powerful Motor

1200W
High Power

23M/s
Wind Speed

1-2 Mins
Short hair

2-3 Mins
Medium length hair

3-5 Mins
Long hair

Figure 5.2: High-Speed Drying. This image highlights the powerful motor and airflow, demonstrating fast drying capabilities for various hair lengths.

- Ensure hair is towel-dried before use.
- Direct the airflow from roots to ends.
- Use the concentrator nozzle for targeted drying or to prepare hair for styling.

5.3 Curling with the Curling Wands

The curling wands utilize advanced technology for automatic curl wrapping.

(1.25 INCH) LEFT & RIGHT CURLING IRON

- Automatic curl wrapping and styling with the latest technology
- Hold a strand of hair near the curling iron and it will curl and style your hair in less than 10 seconds
- After the curling is completed, use the one-button cold air function to set the curl for 10 seconds to increase the durability of the curls.

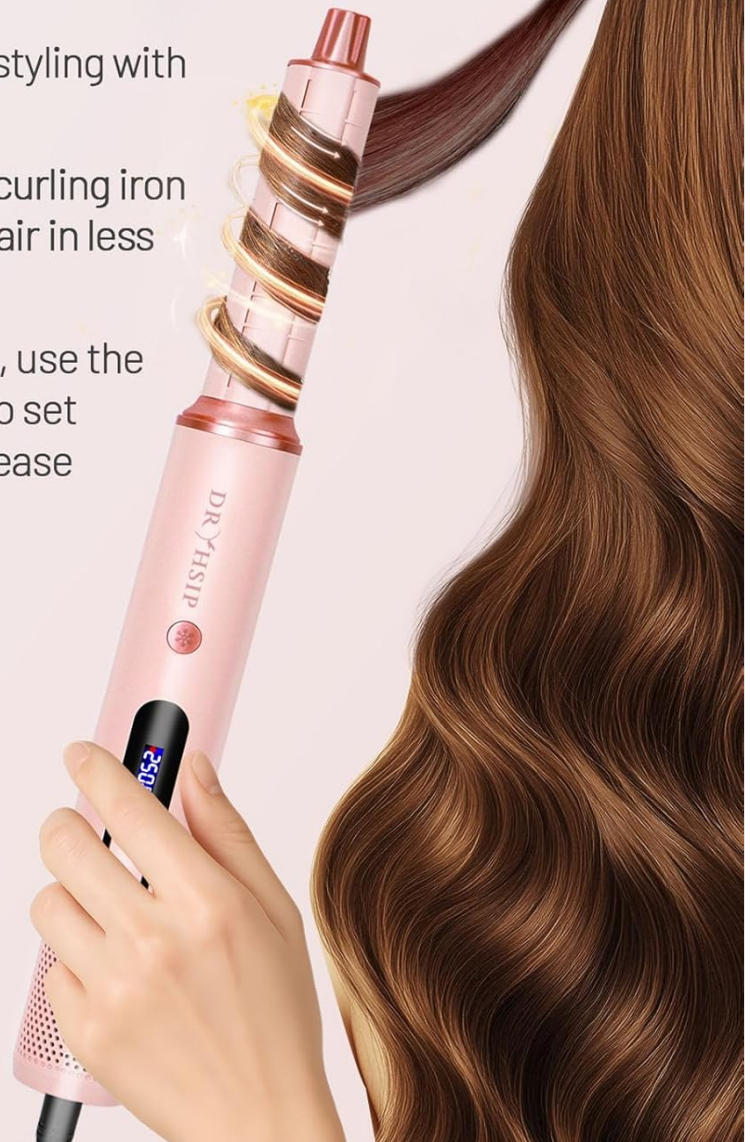


Figure 5.3: Automatic Curling. This image illustrates the process of using the curling wands, including the automatic wrapping feature and the cold air setting for setting curls.

1. Select the appropriate curling wand (left or right) based on the desired curl direction.
2. Hold a strand of hair near the curling iron. The air will automatically wrap the hair around the barrel.
3. Hold for a few seconds (typically less than 10 seconds) until the curl forms.
4. Once the curl is complete, use the one-button cold air function for 10 seconds to set the curl and increase its durability.

5.4 Straightening with the Smoothing Brush

The smoothing brush helps to achieve sleek, frizz-free hair.

The advertisement features a woman with long, wavy, blonde hair, smiling and holding a pink smoothing brush. The brush has a black head with numerous small, circular negative ions. A red text box in the upper right corner of the woman's hair reads "[-70% Frizz]". To the left of the woman, there are two inset images: the top one shows her hair before styling, labeled "Before", and the bottom one shows her hair after styling, labeled "After". Below the woman, there is a close-up image of the brush head, which is pink with a black head and a digital display showing "205.2".

500 MILLION NEGATIVE IONS
Reduces Frizz and Enhances Shine

Figure 5.4: Smoothing and Frizz Reduction. This image demonstrates the effectiveness of the smoothing brush, emphasizing its ability to reduce frizz and enhance hair shine through negative ion technology.

- Ensure hair is mostly dry.
- Section your hair.
- Slowly glide the smoothing brush through each section from root to tip.

5.5 Volumizing with the Round Brush

The round brush is designed for adding volume and shaping hair.

Round Brush

Go from drying to styling for a quicker routine

Wet-To-Dry volumizing and styling without heat damage, create and set a natural fluffy curl or small waves, suitable for bangs or inner buckle shape

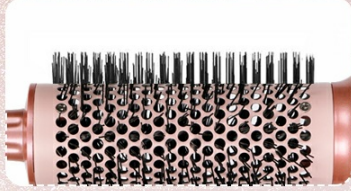


Figure 5.5: Volumizing with Round Brush. This image shows the round brush in action, illustrating its capability for wet-to-dry volumizing and styling without heat damage, suitable for bangs or inner buckle shapes.

- Use on damp or dry hair.
- Lift sections of hair at the roots with the brush and apply heat for volume.
- Rotate the brush through the ends to create soft curls or flips.

6. MAINTENANCE

Proper maintenance ensures the longevity and optimal performance of your Dryhsip Hair Styler.

- **Cleaning:**
 - Always unplug the styler and allow it to cool completely before cleaning.
 - Wipe the main unit and attachments with a soft, damp cloth. Do not use abrasive cleaners or solvents.
 - Regularly remove any hair or debris from the brush bristles and air intake filter to maintain airflow efficiency.
- **Storage:**
 - Ensure the styler and all attachments are completely dry before storing.
 - Store the styler and its attachments in a cool, dry place, away from direct sunlight and moisture.
 - The compact design allows for easy storage and portability.

PORTABLE **6 IN 1** HIGH-SPEED HAIR DRYER

- Lightweight
- Easy to Hold
- Removable Filter
- Detachable
- Compact for Travel



Figure 6.1: Portable Storage. This image demonstrates the compact and detachable nature of the styler, making it convenient for travel and storage.

7. TROUBLESHOOTING

If you encounter issues with your Dryhsip Hair Styler, refer to the following common troubleshooting steps:

Problem	Possible Cause	Solution
Styler does not turn on.	No power supply; ALCI tripped; loose connection.	Check power outlet. Press reset button on ALCI plug. Ensure plug is fully inserted.
Attachments do not stay on.	Attachment not properly secured.	Ensure attachment is aligned and pushed firmly until it clicks into place.
Reduced airflow or heating.	Air intake/exhaust blocked; dirty filter.	Clean any hair or debris from the air intake filter and ensure vents are clear.
Styler overheats and shuts off.	Blocked airflow; prolonged use at high settings.	Unplug and allow to cool. Clean air vents. Reduce usage time or temperature setting.

If the problem persists after attempting these solutions, please contact Dryhsip customer support for further assistance.

8. SPECIFICATIONS

Key technical specifications for the Dryhsip 6-in-1 Hair Styler Set:

- **Model Number:** WT-661
- **Product Dimensions:** 2.76 x 2.76 x 10.63 inches (main unit); 2.87 Pounds
- **Motor Speed:** 110,000 RPM
- **Power:** 1400 watts
- **Airflow Speed:** Up to 25m/s
- **Temperature Range:** 170°F - 450°F (displayed on LED screen)
- **Heat/Cool Modes:** 3 Heat modes + Cold Shot
- **Material:** Metal, Plastic
- **Color:** Pink
- **Power Source:** Corded Electric



Figure 8.1: Product Dimensions. This diagram provides detailed measurements for the main styler unit and each of its attachments.

9. WARRANTY AND SUPPORT

For information regarding product warranty, returns, or technical support, please refer to the purchase documentation or contact the manufacturer directly.

- **Manufacturer:** Dryhsip
- **Online Store:** Visit the Dryhsip Store on Amazon
- **Protection Plans:** Optional 2-Year and 3-Year Protection Plans may be available for purchase separately.