

Manuals+

[Q & A](#) | [Deep Search](#) | [Upload](#)

[manuals.plus](#) /

› [ZOSI](#) /

› [ZOSI 8-Channel 5MP Wi-Fi 6 Security Camera System with 12-inch LCD Monitor and 4 Pan-Tilt Cameras \(Model: 88L1-2805W4-US\) User Manual](#)

ZOSI 88L1-2805W4-US

ZOSI 8-Channel 5MP Wi-Fi 6 Security Camera System User Manual

Model: 88L1-2805W4-US

1. INTRODUCTION

This manual provides detailed instructions for the installation, operation, and maintenance of your ZOSI 8-Channel 5MP Wi-Fi 6 Security Camera System. This system includes a 12-inch LCD monitor with a built-in NVR, four 5MP pan-tilt Wi-Fi cameras, and a pre-installed 1TB hard drive for continuous recording. Key features include AI person detection, color night vision, and two-way audio communication.



Image 1.1: Overview of the ZOSI 8-Channel 5MP Wi-Fi 6 Security Camera System components.

2. PACKAGE CONTENTS

Verify that all items listed below are included in your package. If any items are missing or damaged, please contact ZOSI customer support.

- 1 x 8-Channel 12-inch LCD NVR Monitor with 1TB Hard Drive
- 4 x 5MP Wi-Fi Pan-Tilt Indoor/Outdoor Cameras
- 4 x Power Adapters for Wi-Fi Cameras

- 1 x Power Adapter for NVR
- 1 x Ethernet Cable
- 1 x USB 2.0 Mouse
- 1 x Quick Start Guide
- 1 x Mounting Screw Bag (contains screws and wall plugs)
- 1 x NVR Mounting Hole Sticker
- 4 x Mounting Templates for Cameras
- 4 x Warning Stickers

Package Contents



NVR



WiFi Camera



NVR Power Adapter



Camera Power Adapter



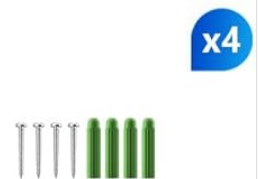
Ethernet Cable



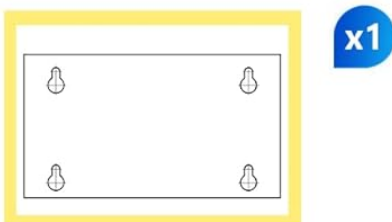
USB2.0 Mouse



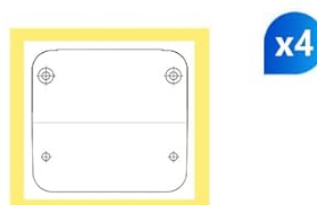
Quick Start Guide



Mounting Screw Bag



NVR Mounting Hole Sticker



Mounting Template



Warning Sticker

3. SETUP INSTRUCTIONS

3.1 System Overview and Connections

Familiarize yourself with the ports and components of your NVR and cameras before beginning installation.



Image 3.1: Component identification for the ZOSI NVR and Wi-Fi camera.

3.2 Initial Power-Up and Automatic Pairing

The cameras and NVR are pre-paired at the factory for a plug-and-play setup. Simply connect the NVR and cameras to power outlets.

1. Connect the NVR power adapter to the NVR and a power outlet.
2. Connect each camera's power adapter to the camera and a power outlet.
3. The cameras will automatically connect to the NVR. Live view should appear on the 12-inch LCD monitor within minutes.

Auto Pair, Plug & Play WiFi Solution

Easy configuration, 2.4GHz wireless transmission



Image 3.2: Plug and Play setup for the ZOSI Wi-Fi Security System.

3.3 Adding Cameras via Wired Pairing (If needed)

If a camera does not automatically pair or if you are adding new cameras, follow these steps for wired pairing:

1. Step 1: Connect Camera to NVR

Power on the camera and NVR. Connect the camera to the NVR using a network cable. The network cable can be removed after successful pairing.



Image 3.3: Wired connection for camera pairing.

2. Step 2: Access IPC Channel Configuration

Right-click on the NVR screen with the connected mouse. Navigate to **IPC Channel Config** and then select **Search**.

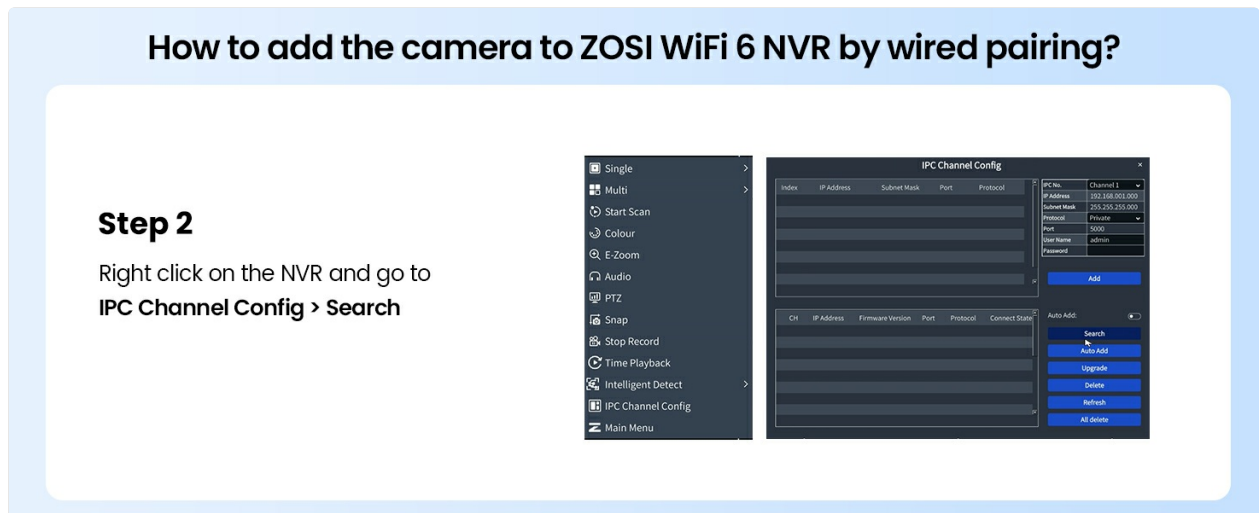


Image 3.4: NVR menu for IPC Channel Configuration.

3. Step 3: Add Detected Camera

Click **Add All** to add the detected camera(s). Wait for the status to show **Connected** and for the camera's image to display on the monitor.

How to add the camera to ZOSI WiFi 6 NVR by wired pairing?

Step 3

Click Add All to add the detected camera.
Wait for the state to show Connected and
the image to display.

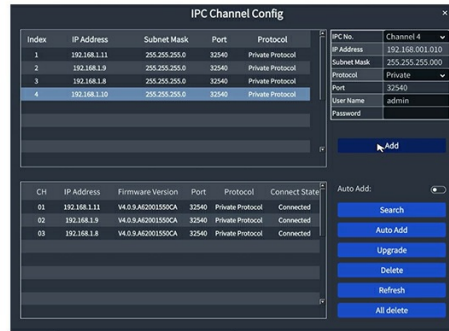


Image 3.5: Adding cameras in the NVR interface.

4. OPERATING INSTRUCTIONS

4.1 Video Monitoring and Recording

The NVR provides a live view of all connected cameras on its 12-inch LCD monitor. The system is configured for 24/7 continuous recording to the pre-installed 1TB hard drive. Older footage will be automatically overwritten when the hard drive is full.



Image 4.1: NVR monitor displaying multiple camera feeds.

4.2 Camera Features

- **5MP HD Resolution:** Each camera captures video at 5-megapixel resolution, providing clear and detailed images.

360° View with 5MP HD Resolution

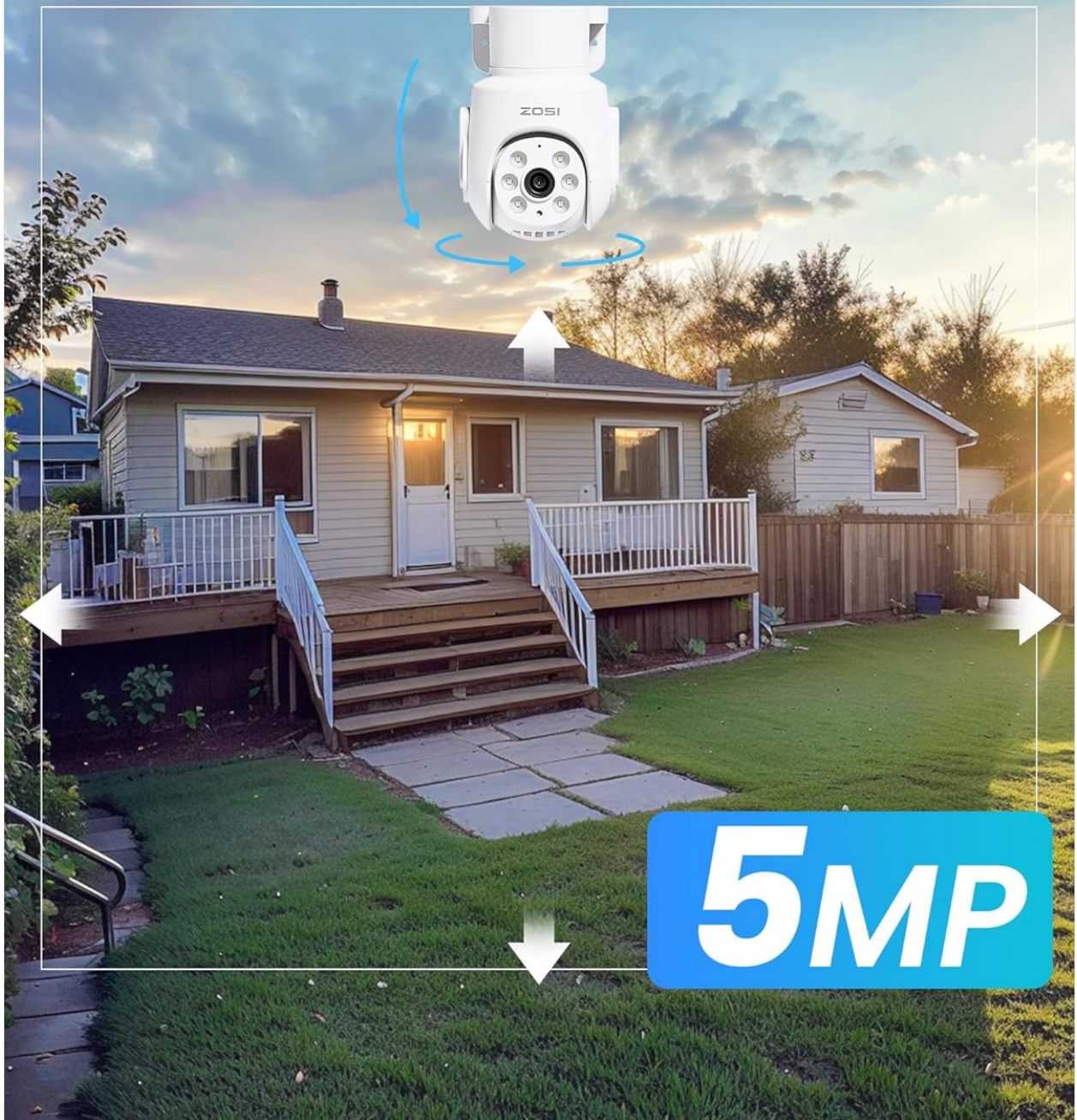


Image 4.2: 5MP HD resolution and 360-degree view capability.

- **Color Night Vision:** The cameras feature warm lights for full-color night vision up to 65 feet, in addition to infrared black and white mode for low-light conditions.

Colorful Details Even at Night

Capture vivid images up to 65ft

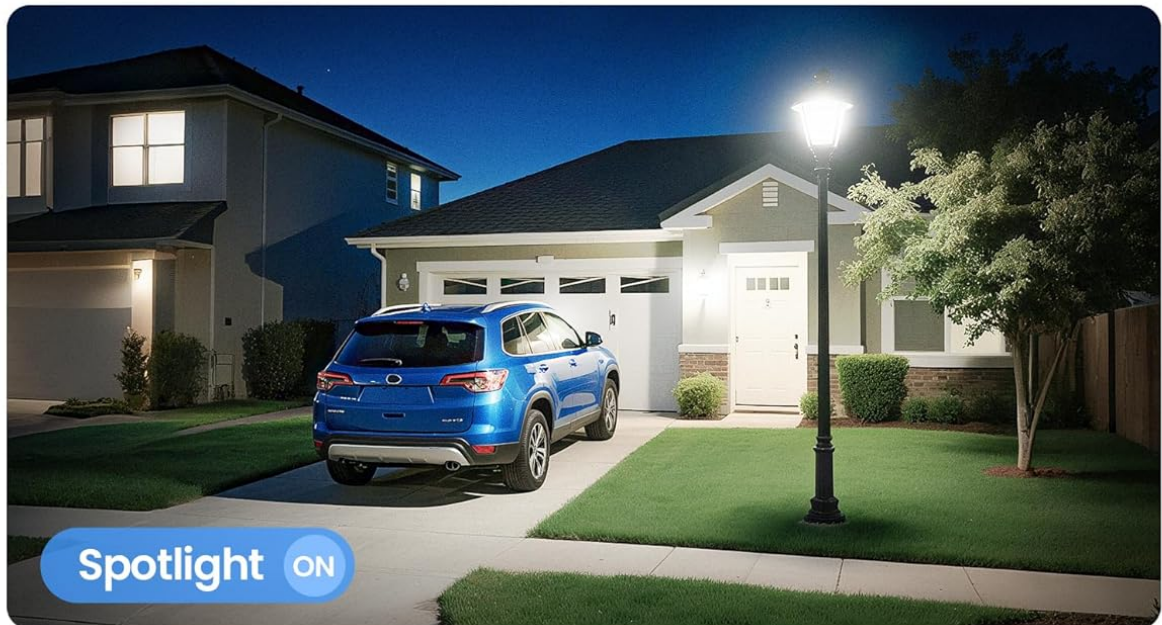


Image 4.3: Color night vision with spotlight.

- **Pan-Tilt Functionality:** Each camera offers 355° horizontal and 50° vertical rotation, allowing for comprehensive area coverage and zero blind spots.
- **AI Human Detection:** Advanced artificial intelligence accurately identifies human movement, reducing false alarms from other moving objects.

Smart Motion & Human Detection

More accurate monitoring, fewer false notifications



Image 4.4: Smart motion and human detection in action.

- **Two-Way Audio:** Built-in microphone and speaker enable real-time two-way communication through the cameras.

Two-Way Audio

With built-in microphone and speaker, you can interact with your family or visitors instantly.



Image 4.5: Two-way audio communication feature.

- **Active Deterrence:** Trigger spotlights and sirens remotely via the ZOSI Smart App to deter intruders.

Night Guard Security with Light and Siren

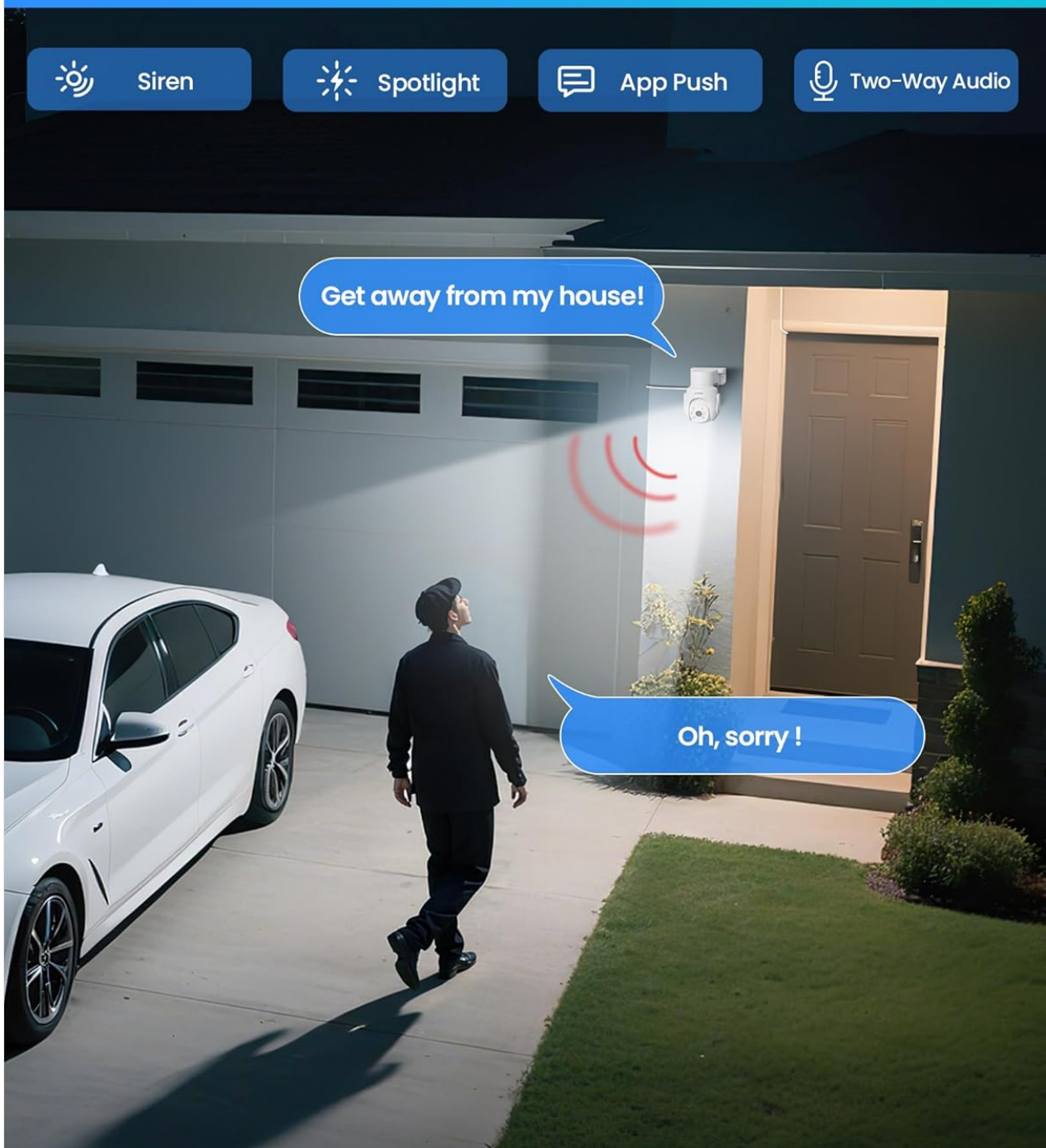


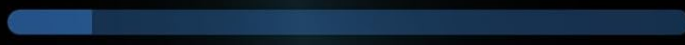
Image 4.6: Active deterrence with light and siren.

- **Wi-Fi 6 Technology:** Utilizes Wi-Fi 6 for enhanced wireless transmission speed, lower latency, and improved stability. Supports 2.4GHz Wi-Fi.

Next-Gen WiFi 6 Technology

Only Support 2.4GHz WiFi

WiFi 4 Speed



8x[^]

WiFi 6 Speed



Faster

WiFi 6



Low
Latency



Enhanced
Security



Higher
Stability

Image 4.7: Benefits of Next-Gen Wi-Fi 6 Technology.

- **IP66 Weatherproof:** Cameras are designed to withstand various weather conditions for outdoor and indoor use.

IP66 Weatherproof

Built to withstand the elements — reliable protection rain or shine.



Image 4.8: IP66 Weatherproof camera design.

4.3 ZOSI Smart App

The ZOSI Smart App allows for remote viewing, playback, and management of your security system from smartphones, tablets, and computers.

- **Remote Live View & Playback:** Access live camera feeds and review recorded footage from anywhere.

Remote Live View & Playback

Stay connected to your home or business no matter where you are with ZOSI Smart App.



Image 4.9: Remote live view and playback on various devices.

- **Customizable Activity Zones:** Define specific areas for motion detection to receive relevant alerts and minimize unnecessary notifications.

Customize Activity Zones

Set activity zones to receive alerts that matter and eliminate unnecessary notifications.



Image 4.10: Customizable activity zones for focused monitoring.

- **Instant Alerts:** Receive real-time app notifications or email alerts upon detection of human movement.

- **Family Sharing:** Easily share live views and recorded footage with family members.

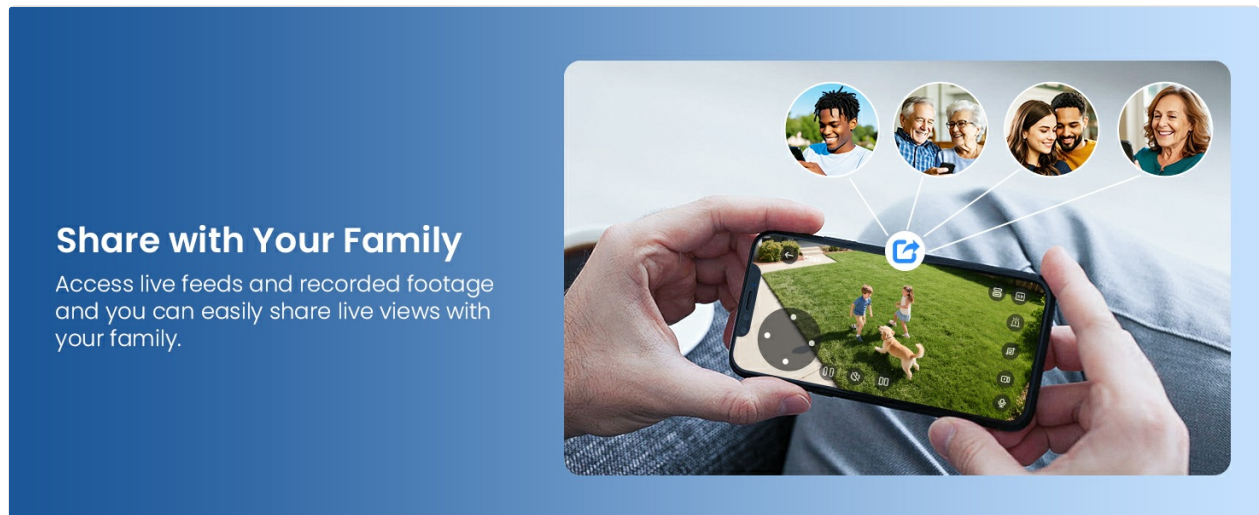


Image 4.11: Family sharing feature for camera access.

5. MAINTENANCE

Regular maintenance ensures optimal performance and longevity of your security system.

- **Camera Lens Cleaning:** Periodically clean camera lenses with a soft, dry cloth to remove dust and smudges that may affect image clarity. Avoid abrasive cleaners.
- **Firmware Updates:** Check the ZOSI Smart App or ZOSI website for available firmware updates to ensure your system has the latest features and security enhancements.
- **Cable Inspection:** Regularly inspect all power and network cables for any signs of wear or damage. Replace damaged cables immediately.
- **Hard Drive Management:** The 1TB HDD supports 24/7 recording with automatic overwrite. For long-term storage of critical events, back up footage via USB. The system supports expansion up to 8TB.

6. TROUBLESHOOTING

If you encounter issues with your ZOSI security system, refer to the following common troubleshooting steps:

- **No Image on Monitor:**
 - Ensure the NVR is powered on and the power adapter is securely connected.
 - Verify that the monitor is connected to the NVR via HDMI and is set to the correct input source.
 - Check if cameras are powered on and within range of the NVR's Wi-Fi signal.
- **Camera Not Connecting/Signal Lost:**
 - Ensure the camera has power.
 - Relocate the camera closer to the NVR or ensure there are no significant obstructions (e.g., thick walls, metal structures) between the camera and NVR.
 - Try re-pairing the camera using the wired pairing method described in Section 3.3.

- **No Recording:**

- Check the NVR's recording settings to ensure continuous recording is enabled.
- Verify the 1TB hard drive is properly installed and recognized by the NVR.
- If the hard drive is full, ensure the auto-overwrite function is enabled.

- **False Motion Alerts:**

- Adjust the motion detection sensitivity in the NVR settings or ZOSI Smart App.
- Utilize the customizable activity zones feature to exclude areas prone to irrelevant motion (e.g., public roads, swaying trees).

- **Two-Way Audio Not Working:**

- Ensure the microphone and speaker settings are enabled in the camera's configuration.
- Check the volume levels on both the NVR/app and the camera.

For further assistance, please contact ZOSI customer support.

7. SPECIFICATIONS

Brand	ZOSI
Model Number	88L1-2805W4-US
Connectivity Technology	Wireless (Wi-Fi 6), Wired (Ethernet)
Video Capture Resolution	5MP (2560x1920)
Special Features	AI Human Detection, Siren Alarm, Smart Playback, Two-Way Audio, Weatherproof (IP66)
Number of Channels	8
Memory Storage Capacity	1 TB (pre-installed HDD), Expandable up to 8 TB
Color	White
Power Source	Corded Electric
Item Dimensions (L x W x H)	12 x 12 x 7 inches (Product Dimensions)
Recommended Uses	Indoor, Outdoor
Compatible Devices	Cameras, Laptops, Smartphones, TV, Tablets
Night Vision Technology	Color Night Vision (with warm light), Infrared B/W Night Vision
Night Vision Range	Up to 65 Feet
Recording Mode	Continuous (24/7), Event, Manual
Viewing Angle	360 Degrees (Pan-Tilt Camera)
Item Weight	10.63 pounds

8. WARRANTY AND SUPPORT

ZOSI is committed to providing reliable security solutions and customer satisfaction.

- **Customer Support:** ZOSI offers lifetime customer support for its products.
- **Privacy:** ZOSI partners with Amazon Web Services (AWS) to protect user privacy. Videos are encrypted end-to-end via 2048-bit RSA, 128-bit AES-GCM algorithms, and TLS protocol to ensure data security.

For technical assistance, warranty claims, or any inquiries, please visit the official ZOSI support page or contact their customer service team.

You can find more information and support resources at the [ZOSI Store on Amazon](#).



Image 8.1: Scan for ZOSI support.