

[Manuals.plus](#) /

> [KNVZNWFF](#) /

> KNVZNWFF Washing Machine Drain Pump DC31-00180A User Manual

## KNVZNWFF DC31-00180A

# KNVZNWFF Washing Machine Drain Pump DC31-00180A User Manual

Model: DC31-00180A | Brand: KNVZNWFF

## 1. INTRODUCTION

---

This manual provides essential information for the safe and effective installation, operation, maintenance, and troubleshooting of your KNVZNWFF DC31-00180A washing machine drain pump. This pump is designed for compatibility with Samsung drum washing machines (S3032) and Askoll models, featuring a 50Hz operation.

Please read this manual thoroughly before attempting any installation or maintenance to ensure proper function and to prevent damage or injury.

## 2. SAFETY INFORMATION

---

- **Disconnect Power:** Always ensure the washing machine is unplugged from the power outlet before attempting any installation, maintenance, or repair. Failure to do so can result in electric shock.
- **Water Drainage:** Before removing the old pump, ensure all water is drained from the washing machine to prevent spills and potential electrical hazards.
- **Professional Installation:** If you are unsure about any step, it is recommended to seek assistance from a qualified appliance technician.
- **Inspect Connections:** After installation, double-check all water and electrical connections to ensure they are secure and free from leaks or loose wiring.
- **Use Correct Tools:** Use appropriate tools for installation to avoid damaging the pump or other washing machine components.

## 3. PRODUCT FEATURES

---

- **Efficient and Silent Operation:** Designed with noise-reducing features and high-quality bearings for smooth, quiet performance, minimizing disturbance during drainage cycles.
- **Easy Installation:** Features a standard interface and universal installation size, making it suitable for

many mainstream washing machine models and simplifying the replacement process.

- **Energy-Saving Design:** Optimized motor and impeller design contribute to reduced operating energy consumption, helping to lower household electricity costs.
- **Excellent Waterproof and Moisture-Proof Performance:** The sealed structure effectively prevents water vapor intrusion, ensuring durability and preventing short circuits in humid laundry environments.
- **Broad Compatibility:** Compatible with Samsung drum washing machine Drainage S3032 Pump Motor and Askoll models, specifically DC31-00180A 50HZ.

## 4. SPECIFICATIONS

---

<b>Brand</b>	KNVZNWFF
<b>Model Number</b>	DC31-00180A
<b>Compatibility</b>	Samsung drum washing machine (S3032), Askoll
<b>Frequency</b>	50HZ
<b>Item Weight</b>	50 Grams
<b>Unit Count</b>	1.0 Count

## 5. SETUP AND INSTALLATION

---

Replacing a washing machine drain pump typically involves accessing the pump from the bottom or rear of the appliance. Always refer to your specific washing machine's service manual for detailed instructions on accessing and replacing components.

### General Installation Steps:

1. **Disconnect Power:** Unplug the washing machine from the electrical outlet.
2. **Drain Water:** Ensure all water is drained from the washing machine. You may need to manually drain water from the pump filter or drain hose.
3. **Access Pump:** Carefully tilt the washing machine back or remove the rear/front panel to gain access to the drain pump.
4. **Disconnect Hoses:** Loosen the clamps and disconnect the inlet and outlet hoses from the old drain pump. Be prepared for residual water.
5. **Disconnect Wiring:** Carefully disconnect the electrical wiring harness from the old pump. Note the orientation if necessary.
6. **Remove Old Pump:** Unmount the old pump from its housing or brackets.
7. **Install New Pump:** Position the new KNVZNWFF DC31-00180A drain pump in place and secure it with its mounting screws or clips.
8. **Connect Wiring:** Reconnect the electrical wiring harness to the new pump. Ensure a secure connection.
9. **Connect Hoses:** Reattach the inlet and outlet hoses to the new pump, securing them with their clamps. Ensure a tight seal to prevent leaks.
10. **Test:** Before reassembling the washing machine, plug it in and run a short drain cycle to check for proper operation and any leaks.

11. **Reassemble:** Once confirmed operational and leak-free, reassemble the washing machine panels.



Figure 5.1: Side view of the KNVZNWFF DC31-00180A drain pump, showing the main body and electrical connection area.

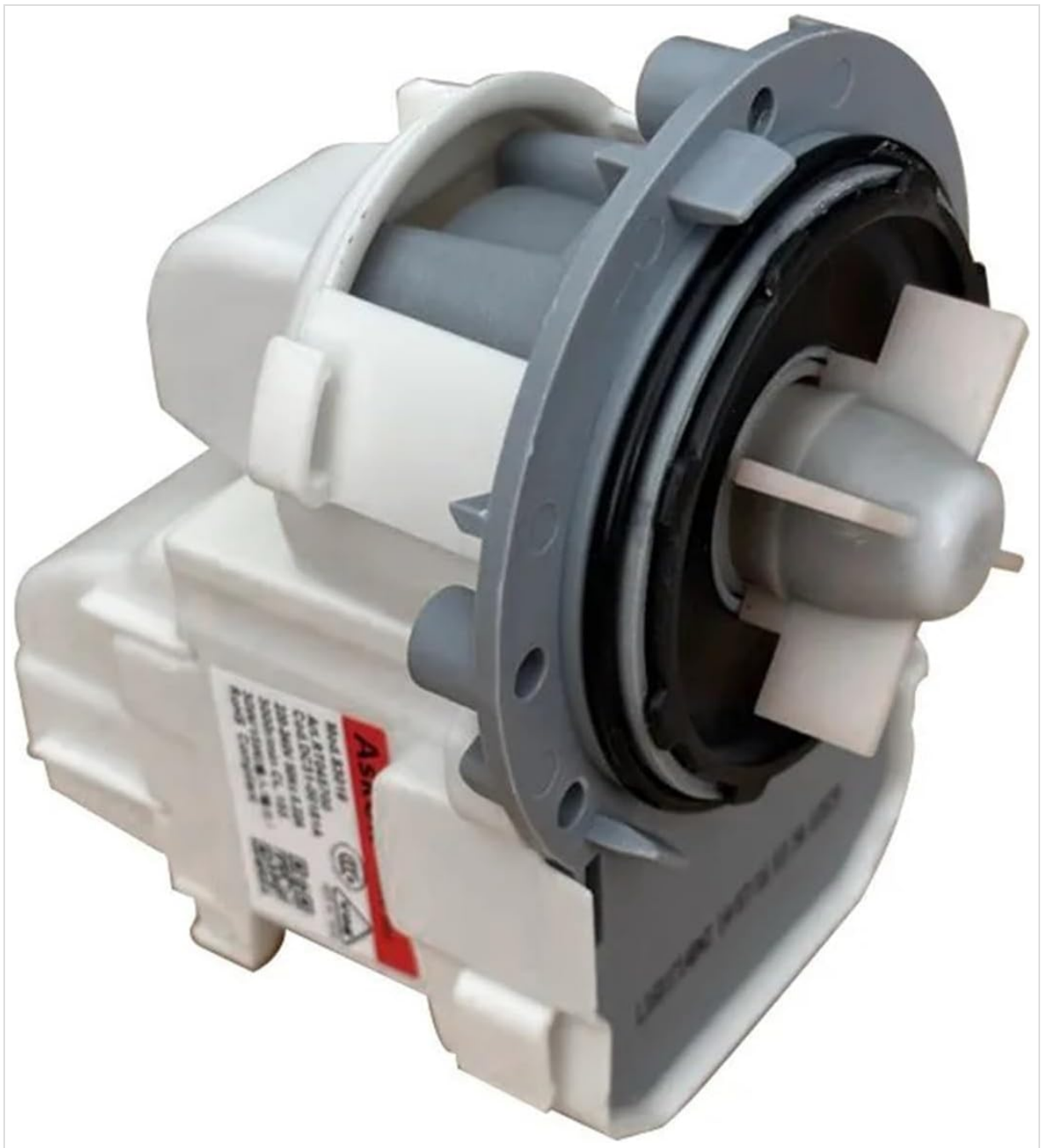


Figure 5.2: View of the drain pump's impeller, responsible for moving water out of the washing machine.



Figure 5.3: Close-up of the electrical connector on the drain pump, where the wiring harness attaches.

## 6. OPERATING INSTRUCTIONS

---

The KNVZNWFF DC31-00180A drain pump operates automatically as part of your washing machine's cycle. Once installed correctly, it will activate during the drain and spin cycles to remove water from the wash tub.

- Ensure the washing machine is properly loaded and the correct wash cycle is selected.
- The pump will engage as required by the washing machine's programming to expel water.
- No manual intervention is typically required for the pump's operation once installed.

## 7. MAINTENANCE

---

Regular maintenance can extend the life of your drain pump and prevent common issues.

- **Periodic Inspection:** Annually, inspect the drain pump and its connections for any signs of wear, leaks, or corrosion.
- **Check for Blockages:** The washing machine's drain filter (usually located at the front bottom panel) should be cleaned regularly. While this pump does not have an integrated filter, blockages in the

washing machine's drain system can affect pump performance.

- **Hose Condition:** Check the drain hoses for kinks, cracks, or blockages that could impede water flow.
- **Power Disconnection:** Always disconnect power before performing any inspection or maintenance.

## 8. TROUBLESHOOTING

---

If you encounter issues with your washing machine's drainage, consider the following troubleshooting steps:

Problem	Possible Cause	Solution
Washing machine not draining	Drain hose kinked or blocked	Check and clear any kinks or blockages in the drain hose.
	Washing machine drain filter clogged	Clean the washing machine's drain filter (refer to your washing machine manual).
	Foreign object in pump impeller	Disconnect power, access the pump, and carefully remove any debris from the impeller.
	Faulty electrical connection to pump	Ensure the pump's electrical connector is securely attached and free from corrosion.
Unusual noise during draining	Debris in the pump	Disconnect power, access the pump, and remove any foreign objects.
	Worn pump bearings	If the noise persists after clearing debris, the pump may need replacement.
Water leaking from pump area	Loose hose clamps or damaged hoses	Tighten hose clamps or replace damaged hoses.
	Improperly seated pump seal	Ensure the pump is correctly seated and its seals are intact during installation.

If these steps do not resolve the issue, contact a qualified technician or the product seller for further assistance.

## 9. WARRANTY AND SUPPORT

---

Specific warranty information for the KNVZNWFF DC31-00180A drain pump is not provided in this manual. For details regarding warranty coverage, return policies, or technical support, please refer to your purchase documentation or contact the seller directly.

When contacting support, please have your product model number (DC31-00180A) and purchase date readily available.