

Manuals.plus /

› Dryhsip /

› Dryhsip 5-in-1 Hair Styler Set & Hair Dryer Brush WT-655 Instruction Manual

## Dryhsip WT-655

# Dryhsip 5-in-1 Hair Styler Set & Hair Dryer Brush WT-655 Instruction Manual

Model: WT-655 | Brand: Dryhsip

## INTRODUCTION

The Dryhsip 5-in-1 Hair Styler Set, Model WT-655, is a versatile hair styling tool designed to provide multiple styling options including drying, curling, volumizing, and straightening. This device utilizes negative ionic technology to help reduce frizz and enhance shine, offering a comprehensive solution for various hair types and styles.

## PACKAGE CONTENTS

Please verify that all items listed below are included in your package:

- 1 x Main Styler Unit (Hair Dryer Base)
- 1 x Hair Drying Nozzle
- 1 x Straightening Brush Head
- 1 x Round Volumizing Brush Head
- 2 x Air Curling Barrels (Left and Right)
- 1 x Heat-Resistant Glove



Image: All components of the Dryhsip 5-in-1 Hair Styler Set, including the main unit, drying nozzle, straightening brush, round volumizing brush, and two air curling barrels.

## SAFETY INFORMATION

Please read all safety warnings and instructions carefully before using this appliance to reduce the risk of electric shock, fire, and injury.

- **DANGER:** Keep away from water. As with most electrical appliances, electrical parts are electrically live even when the switch is off.

- Do not place or store where it can fall or be pulled into a tub or sink.
- Do not place in or drop into water or other liquid.
- If an appliance falls into water, unplug it immediately. Do not reach into the water.
- **WARNING:** To reduce the risk of burns, electrocution, fire, or injury to persons:
- An appliance should never be left unattended when plugged in.
- Close supervision is necessary when this appliance is used by, on, or near children or individuals with certain disabilities.
- Use this appliance only for its intended household use as described in this manual. Do not use attachments not recommended by the manufacturer.
- Never operate this appliance if it has a damaged cord or plug, if it is not working properly, or if it has been dropped, damaged, or dropped into water.
- Keep the cord away from heated surfaces. Do not wrap the cord around the appliance.
- Never block the air openings of the appliance or place it on a soft surface, such as a bed or couch, where the air openings may be blocked. Keep the air openings free of lint, hair, and the like.
- Never use while sleeping.
- Never drop or insert any object into any opening.
- Do not use outdoors or operate where aerosol (spray) products are being used or where oxygen is being administered.
- Do not use an extension cord with this appliance.
- Do not direct hot air towards eyes or other heat-sensitive areas.
- Attachments may be hot during use. Allow them to cool before handling.
- Do not place appliance on any surface while it is operating.

## SETUP

---

The Dryhsip 5-in-1 Hair Styler features interchangeable heads for various styling needs. Follow these steps to attach and detach the styling heads:

1. **Attaching a Head:** Align the desired styling head with the main unit. Push the head firmly onto the main unit until you hear a click, indicating it is securely locked in place.
2. **Detaching a Head:** Ensure the device is turned off and unplugged. Allow the head to cool if it has been in use. Grip the main unit firmly and twist the styling head counter-clockwise until it unlocks. Gently pull the head away from the main unit.

# 200 MILLION NEGATIVE IONS

Release negative ions to reduce frizz and protect your hair

+50%  
smooth

+35%  
Shine

-85%  
Frizz



Image: The main styler unit and its five interchangeable attachments, ready for assembly.

## OPERATING INSTRUCTIONS

Before use, ensure your hair is towel-dried and detangled. Plug the device into a suitable power outlet. The device features multiple heat and speed settings, typically controlled by a switch on the main unit. Adjust settings according to your hair type and desired style.

Your browser does not support the video tag.

Video: An overview of the Dryhsip 5-in-1 Hot Air Styler, demonstrating its various functions and attachments.

### 1. Hair Drying Nozzle

Attach the hair drying nozzle to the main unit. Use this attachment to quickly dry your hair to about 80% dry before styling with other attachments. Direct the airflow evenly over your hair, moving the nozzle constantly to prevent heat concentration.



Image: A woman demonstrating the use of the hair drying nozzle to quickly dry her hair.

## 2. Straightening Brush Head

Attach the straightening brush head. This brush is designed to smooth and straighten hair while drying. Section your hair and slowly brush through each section from root to tip. The negative ionic technology helps to reduce frizz and leave hair smooth and shiny.

# Straight hair comb

10 Million Ions for Ultra Smooth Results



Minimize static  
frizz, boost shine

Image: A woman using the straightening brush attachment to smooth and straighten her hair.

### 3. Round Volumizing Brush Head

Attach the round volumizing brush head. This attachment is ideal for adding volume at the roots and creating soft curls or waves at the ends. Work with small sections of hair, placing the brush near the roots and rotating it as you pull it through to the ends. For extra volume, lift hair at the roots while drying.

# 5 in 1 Hairstyles **Straight, Voluminous, and curly**

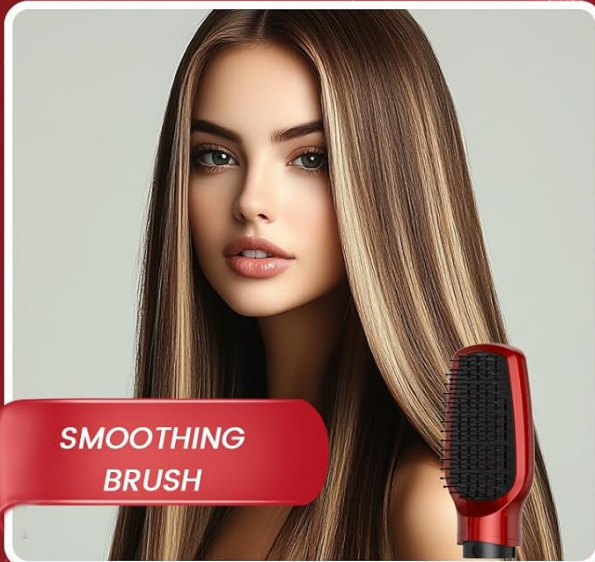
Create Salon-Looking Styles at Home with Ease



Air curling barrel



Oval brush head



SMOOTHING  
BRUSH



DRYINGNOZZLE

Image: The Dryhsip 5-in-1 Hair Styler showcasing its different attachments, including the round volumizing brush, and the various hairstyles achievable.

## 4. Air Curling Barrels (Left and Right)

Select either the left or right air curling barrel based on the desired curl direction. The air-wrapping technology automatically attracts and wraps hair around the barrel. Hold a section of hair near the barrel, and the air will draw the hair in. Hold for a few seconds until the curl forms, then release. Use the heat-resistant glove provided for safety.

# Design Your Own Hairstyle



30S  
30S Fast heating

5min  
Heat Up For  
5minutes to Curl

Image: A woman demonstrating the air-wrapping technology of the curling barrel to create soft curls.

## MAINTENANCE

Proper maintenance ensures the longevity and optimal performance of your Dryhsip Hair Styler.

- **Cleaning the Air Filter:** Regularly check and clean the air filter located at the bottom of the main unit. A clogged filter can reduce airflow and cause overheating. Twist to remove the filter cover, clean any accumulated lint or hair with a soft brush, and then reattach.
- **Cleaning Attachments:** After each use, ensure the attachments are cool. Wipe them with a soft, damp cloth to remove any hair product residue. Do not use abrasive cleaners or immerse any part of the device in water.
- **Storage:** Store the styler and its attachments in a cool, dry place. Do not wrap the power cord around the appliance, as this can damage the cord.

## TROUBLESHOOTING

If you encounter any issues with your Dryhsip Hair Styler, refer to the following common problems and solutions:

| Problem                                    | Possible Cause   | Solution   |
|--|--|--|
| Device not turning on                      | No power, faulty outlet, or tripped GFCI.                                | Check power connection. Test the outlet with another appliance. Reset the GFCI on the plug or wall outlet.                         |
| Weak airflow or overheating                | Clogged air filter.  | Clean the air filter as described in the Maintenance section.  |
| Attachments not staying in place           | Not properly attached or worn locking mechanism.                         | Ensure the attachment is pushed firmly and twisted until it clicks. If the issue persists, contact customer support.               |
| Hair not curling/straightening effectively | Incorrect hair preparation, wrong setting, or too much hair per section. | Ensure hair is towel-dried (not soaking wet). Use appropriate heat/speed settings. Work with smaller, manageable sections of hair. |

## SPECIFICATIONS

| Feature            | Detail                     |
|--------------------|----------------------------|
| Model Number       | WT-655                     |
| Brand              | Dryhsip                    |
| Product Dimensions | 2.76 x 2.76 x 10.63 inches |
| Weight             | 2 Pounds                   |
| Material           | Plastic                    |
| Wattage            | 800 watts                  |
| Power Source       | Corded Electric            |



Image: Detailed dimensions of the Dryhsip 5-in-1 Hair Styler main unit and its various attachments.

## WARRANTY AND SUPPORT

For warranty information or technical support, please refer to the product packaging or contact Dryhsip customer service directly. Protection plans may be available for extended coverage.