



Manuals.plus /

- › **soges** /
- › soges Twin Size Metal Loft Bed with Storage Stairs & Drawers User Manual

## soges 10FJYC-LOFT-J-US1

# soges Twin Size Metal Loft Bed with Storage Stairs & Drawers User Manual

Model: 10FJYC-LOFT-J-US1

## INTRODUCTION

---

This user manual provides comprehensive instructions for the assembly, operation, and maintenance of your soges Twin Size Metal Loft Bed with Storage Stairs & Drawers. Designed for space efficiency, this heavy-duty metal bed frame integrates a sleeping loft, hollow staircase shelves, and storage drawers, making it an ideal solution for dorm rooms, apartments, and children's bedrooms. Please read this manual thoroughly before assembly and use to ensure safe and proper installation and long-term enjoyment of your new loft bed.

## SAFETY INFORMATION

---

Your safety is paramount. Adhere to all warnings and instructions to prevent injury or damage.

- **Weight Capacity:** Do not exceed the maximum weight capacity of 400 lbs for the bed frame.
- **Mattress Requirements:** Use a twin-size mattress (75"L x 38"W) with a thickness between 4-6 inches for the top bunk. Ensure the mattress surface is at least 5 inches below the top of the guardrails.
- **Guardrails:** Always use the provided guardrails on the top bunk. Ensure they are securely installed.
- **Anti-Tipping Device:** Securely install the anti-tipping device to a wall stud to prevent accidental tipping. This is a critical safety measure.
- **No Jumping:** Do not allow jumping on the bed.
- **Regular Checks:** Periodically check all bolts and connections to ensure they remain tight. Retighten as necessary.
- **Children's Use:** This loft bed is suitable for teens and juniors. Supervise younger children around the bed.



**Figure 1:** Illustration of the anti-tipping device, demonstrating how it secures the bed frame to a wall for enhanced stability and safety.

## PACKAGE CONTENTS

Before beginning assembly, verify that all components listed below are present and undamaged. If any parts are missing or damaged, do not proceed with assembly and contact customer support immediately.

- Metal Bed Frame Components (various beams, posts, and slats)
- Wood Panels for Bed Frame and Staircase
- Staircase Storage Units and Drawers
- Hardware Pack (bolts, screws, washers, nuts, anti-tipping device)
- Assembly Tools (e.g., Allen wrench)
- Installation Manual (this document)



Solid wood staircase boards



Solid Metal Slats



Strong Leg Support

**Figure 2:** Detailed view of key structural components, including metal slats, wood staircase boards, and leg support, illustrating the quality of materials.

## SETUP AND ASSEMBLY

The soges Twin Size Metal Loft Bed is designed for straightforward assembly. All necessary tools and hardware are included. We recommend assembling the bed with at least two adults.

1. **Preparation:** Clear a spacious area for assembly. Lay out all parts and hardware, organizing them according to the labels in the included installation manual.
2. **Frame Assembly:** Begin by assembling the main metal frame components. Follow the step-by-step diagrams in the separate installation manual provided in the package. Do not fully tighten all bolts until the entire frame is assembled to allow for minor adjustments.
3. **Staircase and Storage:** Assemble the staircase and integrate the storage drawers as per the manual's instructions. Ensure all connections are secure.
4. **Slats and Guardrails:** Install the metal mattress slats and securely attach the full-length guardrails to the top bunk.
5. **Final Tightening:** Once all components are in place and aligned, systematically tighten all bolts and screws

using the provided tools.

6. **Anti-Tipping Device:** Securely attach the anti-tipping device to a wall stud behind the bed. This step is crucial for stability and safety.



**Figure 3:** The soges Twin Size Metal Loft Bed fully assembled, showcasing its design and integrated storage.

# Product Dimensions

Weight Capacity 400 lbs

Twin size

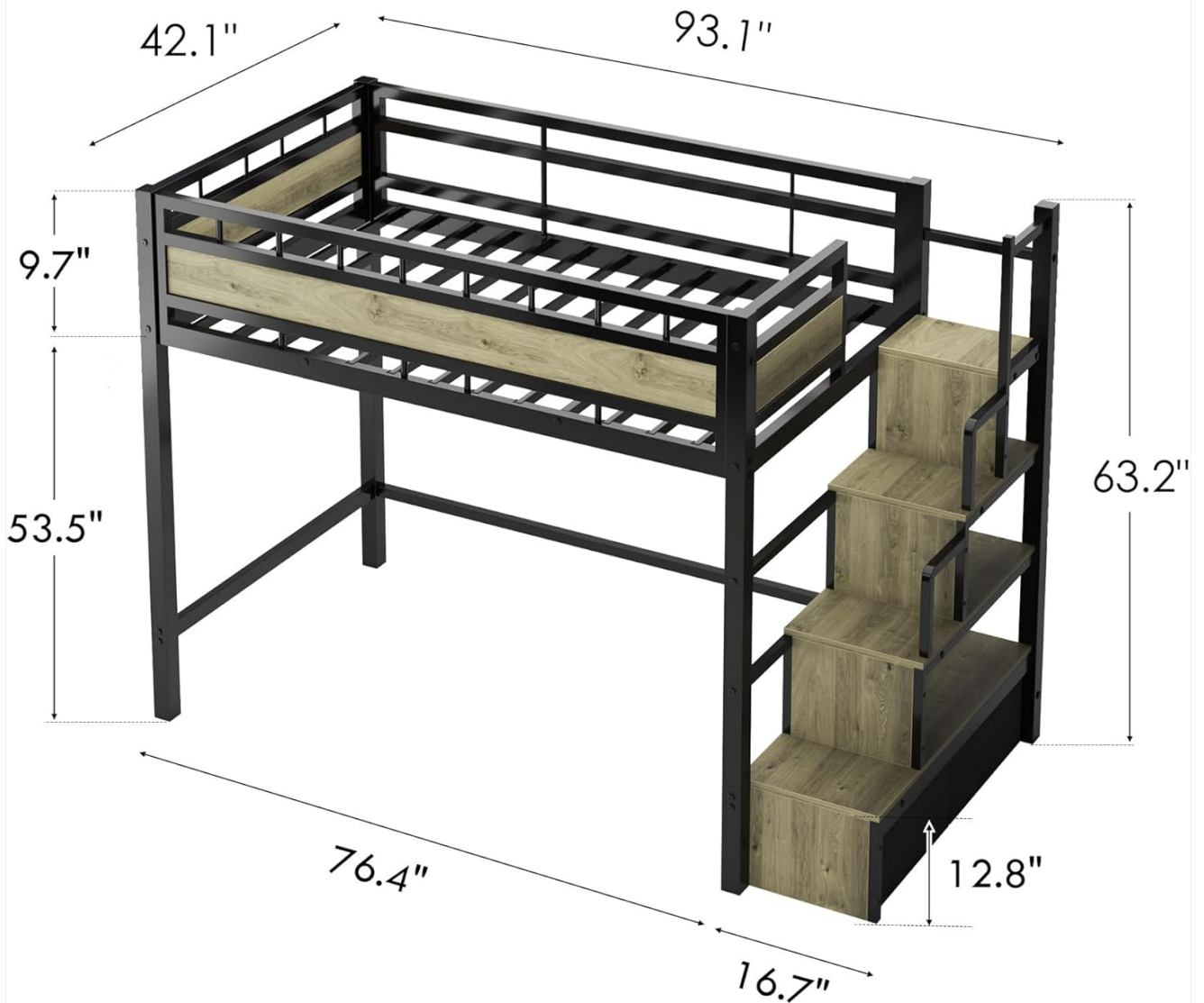


Figure 4: Detailed product dimensions, including overall length, width, height, and under-bed clearance, essential for space planning.

## OPERATION AND USAGE

The soges loft bed offers versatile functionality beyond just sleeping, maximizing your living space.

- **Sleeping Area:** The top bunk provides a secure and comfortable sleeping space. Ensure the mattress fits snugly within the frame and guardrails.
- **Under-Bed Space:** The generous 53.5-inch clearance under the bed can be transformed into various functional areas:
  - **Study Zone:** Accommodate a desk and chair for a dedicated homework or work area.
  - **Lounge Area:** Place a sofa or bean bag for a cozy reading nook or relaxation spot.
  - **Storage:** Utilize the space for additional storage cabinets or shelving units.
  - **Play Area:** Create a fun and imaginative play space for children.
- **Staircase Storage:** The hollow staircase steps provide convenient open shelving for books, decor, or

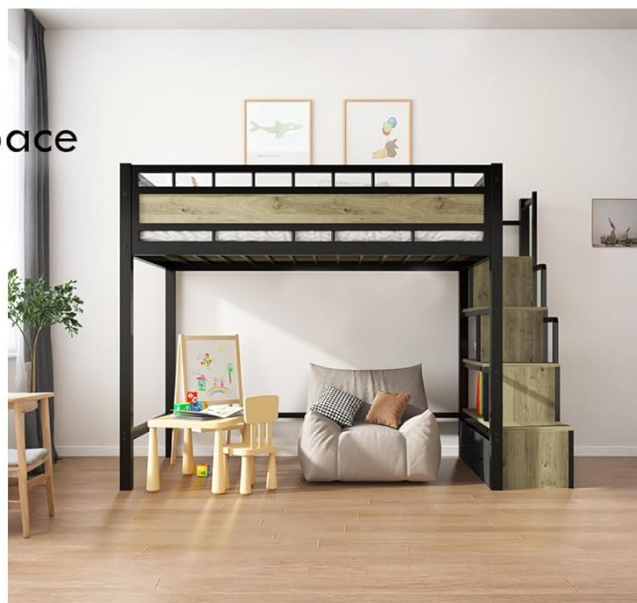
frequently used items.

- **Drawers:** The two large-capacity drawers integrated into the staircase offer discreet storage for clothes, toys, or other belongings, helping to keep the room tidy.

## Space Saving Loft Bed

**4-6"** Height Under Bed Space

- A playing area
- A reading area
- A little cozy area



**Figure 5:** Examples of how the versatile under-bed space can be utilized for various activities and functions.

# Smart Vertical Storage

Staircase hollow storage + 2 large-capacity drawers to maximize space utilization and avoid clutter



Clothes



Snacks



Toy



Building blocks

**Figure 6:** Illustration of the smart vertical storage provided by the staircase shelves and integrated drawers, designed to maximize space utilization.

## MAINTENANCE

Regular maintenance will help prolong the life and ensure the safety of your loft bed.

- **Cleaning:** Wipe down the metal frame and wood panels with a soft, damp cloth. Avoid harsh chemicals or abrasive cleaners that could damage the finish.
- **Hardware Check:** Periodically (e.g., every 3-6 months) inspect all bolts, screws, and connections. Tighten any that have become loose.
- **Drawer Maintenance:** Ensure the storage drawers slide smoothly. Clean any debris from the drawer tracks if necessary.
- **Anti-Tipping Device:** Verify that the anti-tipping device remains securely attached to the wall.

## TROUBLESHOOTING

If you encounter any issues with your loft bed, refer to the following common problems and solutions:

- **Bed Wobbles:**

- Ensure all bolts and screws are fully tightened.
- Verify the anti-tipping device is properly installed and secured to a wall stud.
- Check that the bed is placed on a level surface.

- **Missing or Damaged Parts:**

- Do not attempt to assemble the bed with missing or damaged parts.
- Contact soges customer support immediately for replacement parts.

- **Difficulty Assembling:**

- Review the detailed installation manual provided with the product.
- Ensure you have sufficient space and assistance (two adults recommended).
- Do not overtighten bolts until the entire structure is aligned.

## SPECIFICATIONS

<b>Brand</b>	soges
<b>Model Number</b>	10FJYC-LOFT-J-US1
<b>Size</b>	Twin
<b>Color</b>	Black
<b>Product Dimensions (L x W x H)</b>	93.1"L x 42.1"W x 63.2"H
<b>Applicable Mattress Size</b>	75"L x 38"W
<b>Applicable Mattress Thickness</b>	4-6 inches
<b>Weight Capacity</b>	400 lbs
<b>Item Weight</b>	121.9 pounds
<b>Material</b>	Metal + Wood
<b>Special Feature</b>	Storage Drawer
<b>UPC</b>	765037805164

## SPECIFICATIONS

Color	Black
Material	Metal+Wood
Product Dimension	93.1*42.1*63.2 in
Applicable Mattress Size	75*38 in
Applicable Mattress Thickness	4-6 in
Weight Capacity	400lbs
Package Weight	121.9lbs

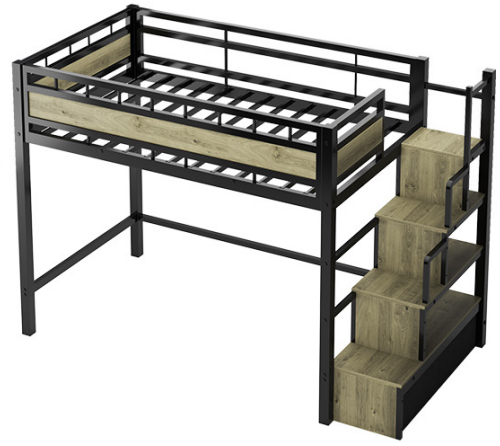


Figure 7: A visual summary of the product's key specifications.

## WARRANTY AND SUPPORT

For any questions regarding assembly, missing parts, product defects, or warranty claims, please contact soges customer support. Refer to your purchase documentation for specific warranty terms and contact information. We are committed to providing assistance and ensuring your satisfaction.

You can often find support contact details on the original packaging or the retailer's website where the product was purchased.