

4928416905749

Front Wiper Blades User Manual

Model: 4928416905749 | Brand: Generic

PRODUCT OVERVIEW

This manual provides essential information for the installation, operation, and maintenance of your new Front Wiper Blades. These high-performance flat blades are designed to provide superior road visibility and a smooth, noise-free wiping experience.



Image: Front Wiper Blades designed for optimal visibility.

Key Features:

- **High Performance:** Engineered for effective cleaning and clear vision.
- **Natural Rubber Material:** Ensures a smooth, quiet, and streak-free wipe.
- **Aerodynamic Design:** Reduces wind lift and noise, maintaining contact at high speeds.
- **Enhanced Visibility:** Provides maximum clarity in various weather conditions.
- **Easy Installation:** Designed for simple and quick replacement.

COMPATIBILITY

These wiper blades are specifically designed for **KIA Cee'd CEED JD models manufactured between 2013 and 2017**. It is crucial to verify your vehicle's make, model, and year before installation to ensure proper fitment and performance.

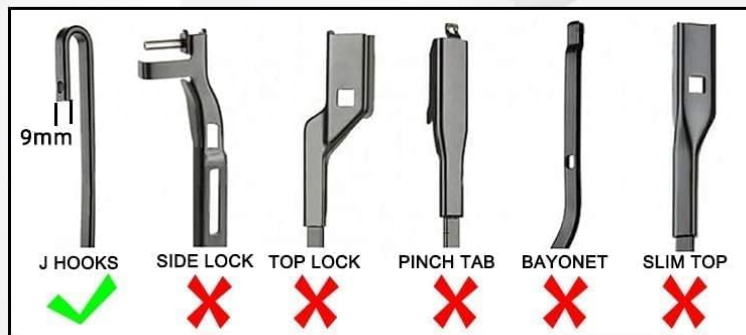
These blades are compatible with vehicles using the **J-hook wiper arm type**.

Fit the J hooks wipers arm



Image: Wiper blade designed to fit J-hook wiper arms.

Measuring Length



1 inch = 25mm

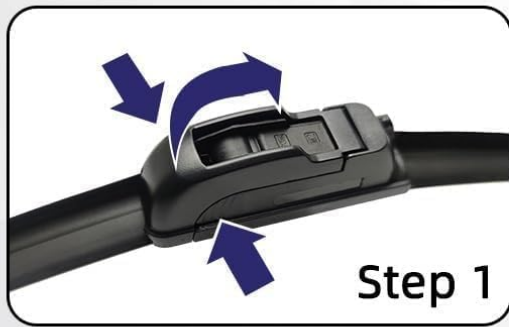
13"	14"	15"	16"	17"	18"	19"	20"	21"
325mm	350mm	375mm	400mm	425mm	450mm	475mm	500mm	525mm
22"	23"	24"	25"	26"	27"	28"	29"	30"
550mm	575mm	600mm	625mm	650mm	675mm	700mm	725mm	750mm

Image: Guide for measuring wiper blade length and identifying arm types.

INSTALLATION GUIDE

Follow these four easy steps for a quick and secure installation of your new wiper blades.

Installation : 4 Easy Steps



Step 1



Step 2



Step 3



Step 4



Remove the green plastic protector

Image: Visual guide for wiper blade installation.

1. Step 1: Remove Old Blade

Lift the wiper arm away from the windshield. Locate the small tab or clip on the old wiper blade where it connects to the wiper arm. Press the tab and slide the old blade off the J-hook arm.

2. Step 2: Attach New Blade

Orient the new wiper blade so the J-hook arm can slide into the adapter on the blade. Push the blade firmly onto the J-hook until it clicks into place.

3. Step 3: Secure the Blade

Ensure the blade is securely fastened and cannot easily slide off the arm. Gently lower the wiper arm back onto the windshield.

4. Step 4: Remove Plastic Protector

Carefully remove the green plastic protector strip from the rubber blade element. This strip protects the blade during shipping and is not part of the operational component.

Note: Always exercise caution when handling wiper arms to avoid damaging the windshield.

OPERATION AND PERFORMANCE

Your new wiper blades are designed for optimal performance across various weather conditions, ensuring clear visibility and safe driving.

SUITABLE FOR ALL WEATHER

Apply even pressure to make the wiper fit snugly



Rain



Dust



Fog



Snow

OUR WIPERS ADAPT TO ANY WEATHER AND ARE FIRM AND STABLE

Image: Wiper blades designed for all-weather performance.

The aerodynamic design applies even pressure across the windshield, allowing the blades to fit snugly and wipe effectively in rain, dust, fog, and snow. This maximum contact area ensures thorough cleaning for cleanliness and safety.

Clear vision, safe driving

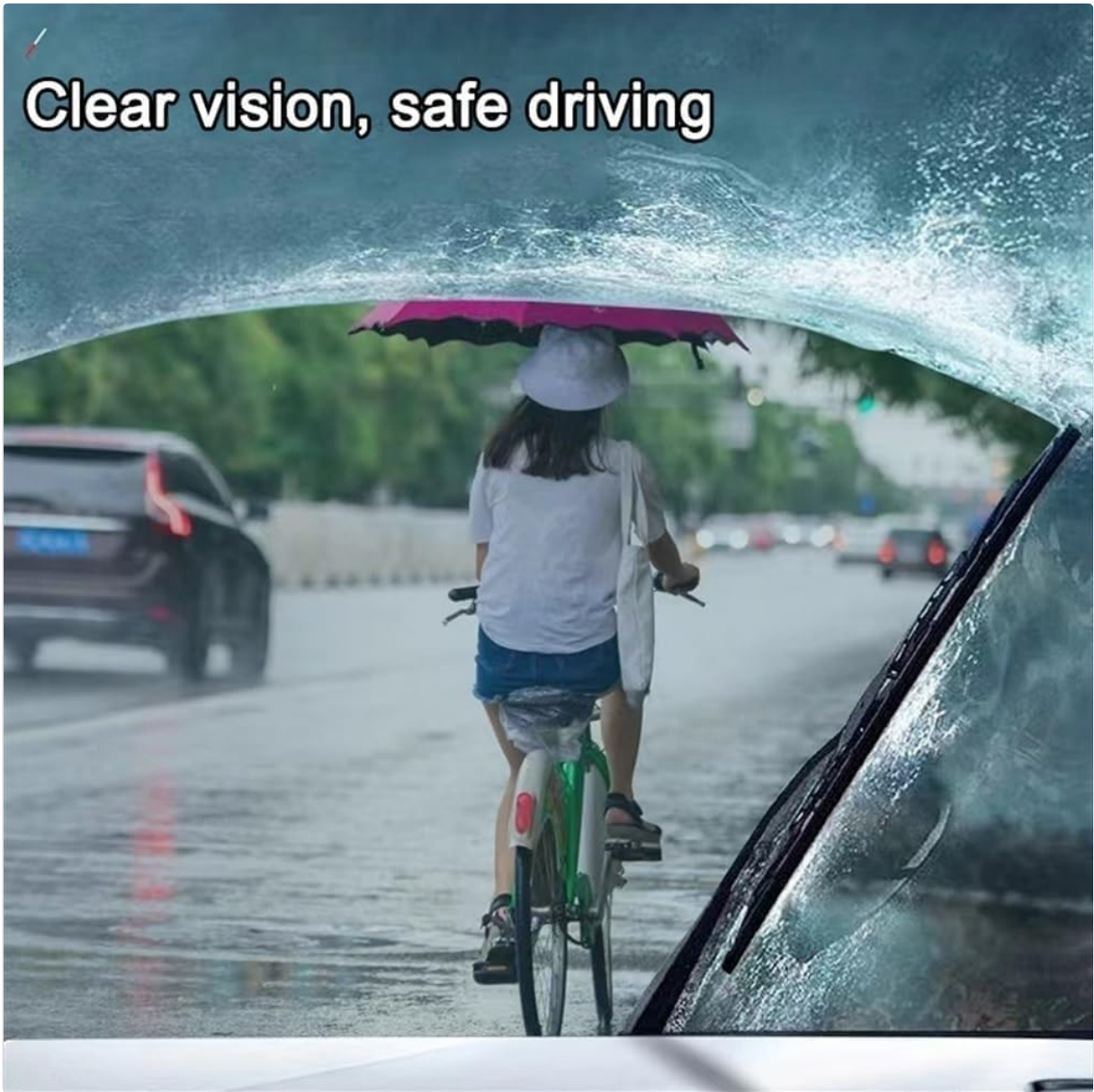


Image: Clear vision provided by effective wiper blades during rain.

CARE AND MAINTENANCE

To prolong the life and maintain the performance of your wiper blades, follow these simple maintenance tips:

- **Regular Cleaning:** Periodically clean the rubber blade elements with a soft cloth and windshield washer fluid or mild soapy water. This removes dirt, grime, and road film that can cause streaking.
- **Inspect for Damage:** Regularly check the rubber blades for cracks, tears, or hardening. Damaged blades should be replaced promptly.
- **Clear Windshield:** Ensure your windshield is clean and free of debris before operating the wipers.
- **Avoid Dry Wiping:** Do not operate wipers on a dry windshield, as this can damage the blades and scratch the glass.

TROUBLESHOOTING

If you experience issues with your wiper blades, consider the following common problems and solutions:

Problem	Possible Cause	Solution
---------	----------------	----------

Problem	Possible Cause	Solution
Streaking	Dirty blade, worn rubber, or insufficient pressure.	Clean the blade. If streaking persists, inspect for wear and replace if necessary. Ensure wiper arm pressure is adequate.
Chattering/Skipping	Blade angle incorrect, dirty windshield, or hardened rubber.	Clean windshield and blade. Check if the wiper arm is bent or if the blade is installed correctly.
Noise (Squeaking/Screeching)	Dry windshield, dirty blade, or worn rubber.	Ensure windshield is wet when operating wipers. Clean blades. If noise persists, consider replacement.
Incomplete Wipe	Bent wiper arm, worn blade, or improper installation.	Check wiper arm for bends. Re-install blade to ensure proper seating. Replace blade if worn.

PRODUCT SPECIFICATIONS

Product Name	Front Wiper Blades
Brand	Generic
Model Number	4928416905749
Material	High-performance natural rubber
Design	Flat Blade, Aerodynamic
Compatibility	KIA Cee'd CEED JD (2013-2017) with J-hook wiper arms
Package Contents	Set of 2 Wiper Blades

WARRANTY AND SUPPORT

Your satisfaction is important to us. If you have any questions, require assistance with installation, or encounter any issues with your wiper blades, please do not hesitate to contact us.

You can send us an email, and we will endeavor to reply within 24 hours to resolve your concerns as quickly as possible.

Please refer to your purchase documentation for specific warranty details and contact information.