

[manuals.plus](#) /

› [DOOGEE](#) /

› [DOOGEE Blade 20 Pro Rugged Smartphone User Manual](#)

DOOGEE Blade 20 Pro

DOOGEE Blade 20 Pro Rugged Smartphone User Manual

Model: Blade 20 Pro

1. INTRODUCTION

The DOOGEE Blade 20 Pro is a robust and high-performance smartphone designed for durability and advanced functionality. It features a large battery, powerful audio, and a versatile camera system, all within a ruggedized body built to withstand challenging environments. This manual provides essential information for setting up, operating, maintaining, and troubleshooting your device.



Image 1.1: Front and rear view of the DOOGEE Blade 20 Pro, highlighting its rugged design and key specifications like 11800mAh battery, 125dB speaker, Android 15, 24GB RAM, and 256GB ROM.

2. PACKAGE CONTENTS

Verify that all items are present in your product box:

- 1 x Blade 20 Pro Rugged Smartphone
- 1 x Type-C USB Cable
- 1 x 18W Charger
- 1 x Screen-printed Protective Film (Pre-applied)
- 1 x SIM Card Removal Needle
- 1 x User Manual

- 1 x Warranty Card

Package Contents

- 1 x Blade20 Pro Rugged Phone
- 1 x Type-C Cable
- 1 x 18W Charger
- 1 x Thicken Protective Film
- 1 x Packing Box
- 1 x User Manual
- 1 x Service Card



Image 2.1: Contents of the DOOGEE Blade 20 Pro retail package, including the phone, charger, cable, protective film, SIM tool, user manual, and warranty card.

3. INITIAL SETUP

3.1. Inserting SIM Cards and Storage Card

1. Locate the SIM card tray on the side of the phone.
2. Use the provided SIM card removal needle to eject the tray.
3. Place your Nano-SIM cards and/or a microSD card (up to 2TB, purchased separately) into the designated slots on the tray. Ensure correct orientation.
4. Carefully reinsert the tray into the phone until it is flush with the device body.

3.2. Charging the Device

1. Connect the Type-C USB cable to the charging port at the bottom of the phone.

2. Connect the other end of the cable to the 18W charger.
3. Plug the charger into a power outlet.
4. Allow the phone to charge fully before first use. The 11800mAh battery supports 18W fast charging.

3.3. Powering On/Off

- **To Power On:** Press and hold the Power button (usually on the right side) until the DOOGEE logo appears.
- **To Power Off:** Press and hold the Power button, then select "Power off" from the options on the screen.
- **To Restart:** Press and hold the Power button, then select "Restart" from the options on the screen.

4. OPERATING YOUR DEVICE

4.1. Android 15 Operating System

The Blade 20 Pro runs on Android 15, offering an intuitive user interface, enhanced privacy features, and efficient app management. Explore the various settings and customization options to personalize your experience.



Image 4.1: Overview of Android 15 OS features, including App Cloning, Split Screen, Enhanced Privacy Protection, Video Enhancement, Dual System Mode, Smart Motion Sensing, Super Clipboard, Screen Awareness, Live Caption, and Glove Mode.

4.2. Display

The device features a 6.6-inch HD+ IPS punch-hole screen with a 90Hz refresh rate for smooth visuals. With 380 nits brightness, the display remains clear even in direct sunlight. Widevine L1 certification allows for streaming high-definition content from platforms like Netflix and Prime Video.

Various Camera Modes, Capture a Perfect Picture

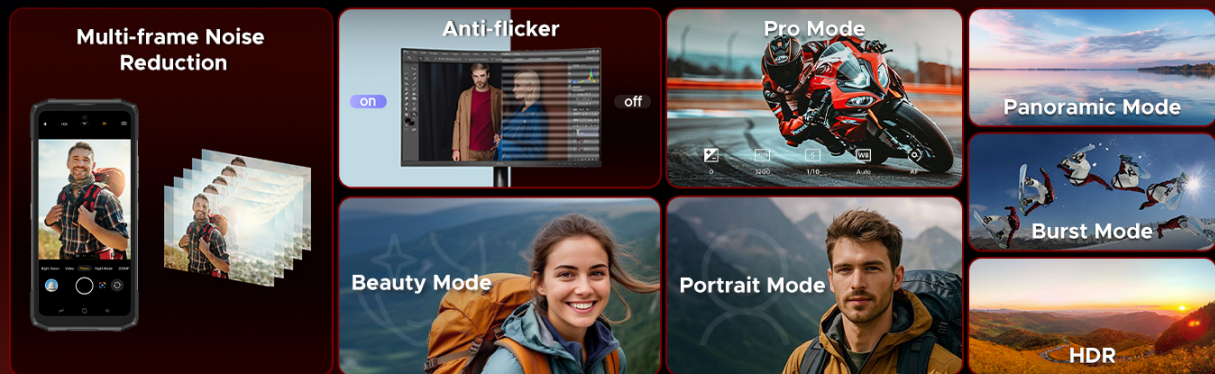


Image 4.2: Details of the 6.6-inch HD+ 90Hz display, showing 84% visual screen ratio, 16.7 million screen colors, 1500:1 screen contrast, 20:9 aspect ratio, and Widevine L1 for HD streaming.

4.3. Camera System

Capture moments with the versatile camera setup:

- **50MP AI Main Camera:** For crisp and vibrant photos in various lighting conditions.
- **20MP Infrared Night Vision Camera:** Allows capturing images in complete darkness.
- **8MP Front Camera:** For clear selfies and video calls.

The camera offers various modes including Night Mode, EIS Anti-shake, AI Recognition, Multi-frame Noise Reduction, Anti-flicker, Pro Mode, Panoramic Mode, Burst Mode, Beauty Mode, Portrait Mode, and HDR.



Image 4.3: Illustration of the DOOGEE Blade 20 Pro's camera system, featuring the 50MP main camera, 20MP night vision camera, and 8MP front camera, with example photos.

4.4. Audio

The Blade 20 Pro is equipped with a 36mm large amplitude speaker and 3.5W high power output, delivering an impressive 125dB sound. This ensures clear audio for calls, music, and media playback, even in noisy environments.

125dB Thunderous Audio

Enjoying Hi-Fi Audio

125dB Max Loudness

3.5W Peak Wattage

11.5CC Sound Cavity

36mm Giant Driver

Smart PA

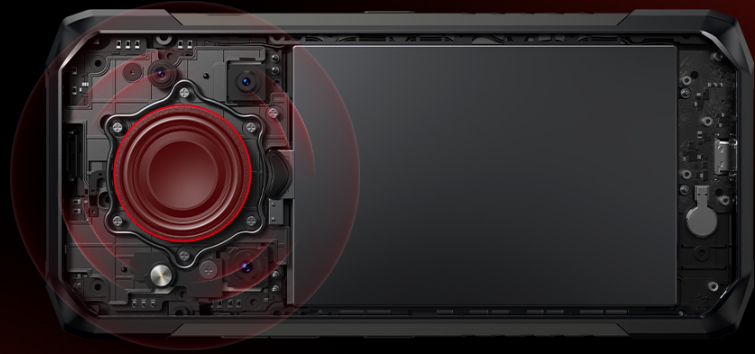


Image 4.4: Diagram showing the internal speaker components and specifications, including 125dB max loudness, 3.5W peak wattage, 11.5CC sound cavity, 36mm giant driver, and Smart PA technology.

4.5. Battery and Charging

The device features an 11800mAh battery, providing extended usage times. It supports 18W fast charging via Type-C. Additionally, OTG reverse charging allows the phone to act as a power bank for other devices.

Max 24GB RAM+256GB ROM

Store More, Worry Less



Max 24GB RAM

6GB Basic+18GB Virtual RAM



256GB ROM

2TB Expandable



*The 2TB expandable TF card needs to be purchased separately

Image 4.5: Information on the 11800mAh Silicon Anode Battery, detailing 18W fast charging, 5W reverse charging, and estimated usage times for standby, calling, video watching, and web browsing.

4.6. Gemini AI

The Blade 20 Pro integrates Gemini AI, enhancing various functions such as content creation, image analysis, code development, language learning, and smart assistance.

Built-in Gemini AI

AI That Works, So You Don't Have To

Content Creation

Image Analysis

Code Development

Language Learning

Smart Assistant

Gemini Live

Image 4.6: Visual representation of the Gemini AI features, including Content Creation, Image Analysis, Code Development, Language Learning, Smart Assistant, and Gemini Live.

4.7. Connectivity and Security

The device supports dual 4G SIM cards (note: Verizon and AT&T are not supported). It includes NFC for convenient payments, accurate GPS navigation (GPS, Glonass, Galileo, Beidou), and Wi-Fi 5 for fast internet. For security, it offers Face ID and Fingerprint Unlock.

Backed by Influential KOLs & Tech Media

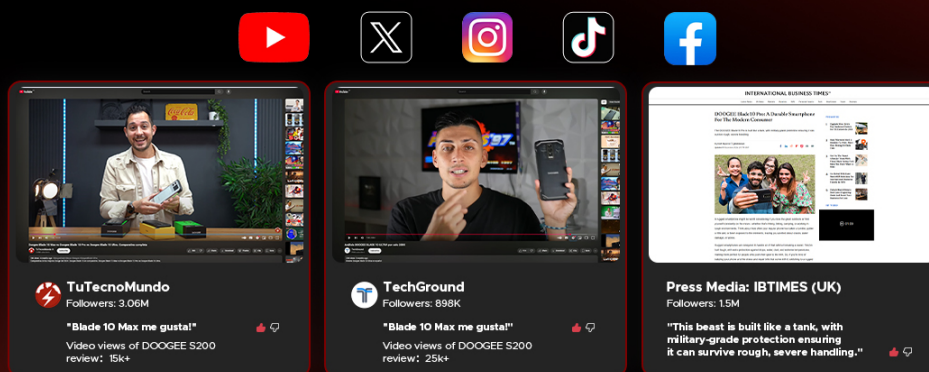


Image 4.7: Overview of connectivity and security features, including NFC for payments, GPS for navigation, Wi-Fi 5, Face ID and Fingerprint Unlock, and dual SIM card slots plus a TF card slot.

5. MAINTENANCE

The DOOGEE Blade 20 Pro is built to be rugged, meeting IP68, IP69K, and MIL-STD-810H standards for water, dust, and shock resistance. To ensure its longevity, follow these maintenance guidelines:

- **Cleaning:** Use a soft, damp cloth to clean the device. Avoid harsh chemicals or abrasive materials. Ensure all ports are dry before charging or connecting accessories.
- **Water Exposure:** While waterproof, ensure all port covers are securely closed before exposing the phone to water. Do not intentionally submerge the phone beyond specified limits (IP68: 1.5m for 30 mins).
- **Temperature:** Avoid exposing the phone to extreme temperatures (below -40°C or above 70°C) for prolonged periods.

- **Impact:** Although shockproof, avoid unnecessary drops or impacts to prevent potential damage.
- **Software Updates:** Regularly update the device software to ensure optimal performance and security.



Image 5.1: Visual representation of the phone's durability, highlighting IP68 water immersion, IP69K dustproof and high-pressure waterproof, and MIL-STD-810H drop-tested from 1.5 meters.

6. TROUBLESHOOTING

If you encounter issues with your DOOGEE Blade 20 Pro, refer to the following common solutions:

Problem	Possible Solution
Device does not power on	Ensure the battery is charged. Connect the charger and wait a few minutes before attempting to power on again. If unresponsive, perform a forced restart by holding the Power button for 10-15 seconds.
Battery drains quickly	Check for background apps consuming power. Adjust screen brightness. Disable unused features like Wi-Fi, Bluetooth, GPS. Reduce screen timeout.
Cannot connect to network	Ensure SIM card is correctly inserted. Check network settings. Verify carrier compatibility (Verizon and AT&T are not supported). Restart the device.
Camera not working	Restart the camera app or the phone. Clear the camera app's cache and data in settings. Ensure no physical obstruction is blocking the lens.
Sound issues (too low/high, distorted)	Check volume settings. Ensure speaker is not blocked or dirty. Restart the device.
Touchscreen unresponsive	Restart the device. If the issue persists, ensure the screen is clean and dry. Remove any screen protectors that might interfere.

For more complex issues, refer to the official DOOGEE support resources or contact customer service.

7. TECHNICAL SPECIFICATIONS

Feature	Specification
Model Name	Blade 20 Pro
Operating System	Android 15
Processor	Unisoc T7200 Octa-Core Processor (12nm)
RAM	24 GB (6GB physical + 18GB virtual)
Internal Storage	256 GB
Expandable Storage	Up to 2 TB via microSD card (purchased separately)
Screen Size	6.6 Inches HD+ IPS Punch-Hole Display
Refresh Rate	90 Hz
Main Camera	50 MP
Night Vision Camera	20 MP Infrared
Front Camera	8 MP
Battery Capacity	11800 mAh (Lithium Polymer)
Charging	18W Fast Charging, 5W OTG Reverse Charging
Speaker	125dB Loudspeaker (36mm driver, 3.5W output)
Durability Standards	IP68, IP69K, MIL-STD-810H
Connectivity	Dual 4G SIM, Wi-Fi 5, Bluetooth, NFC, USB Type-C
Navigation	GPS, Glonass, Galileo, Beidou
Security	Face ID, Fingerprint Unlock
Dimensions	3.2 x 0.62 x 6.85 inches
Weight	1.3 pounds

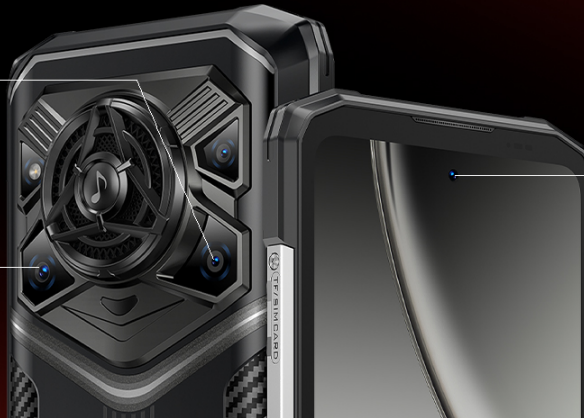
Capture Clear Photos Day and Night



20MP
Night Vision Camera



50MP
Ultra-clear Main Camera



8MP
Front Camera

Image 7.1: Details of the Unisoc T7200 Octa-Core Processor, highlighting its 12nm processing technology and overall performance.

Night Mode



EIS Anti-shake



AI Recognition



Image 7.2: Illustration of the memory configuration, showing 6GB basic RAM + 18GB virtual RAM for a total of 24GB, and 256GB ROM with 2TB expandability.

8. WARRANTY AND SUPPORT

Your DOOGEE Blade 20 Pro comes with a warranty. Please refer to the included Warranty Card in your package for detailed information regarding warranty terms, conditions, and duration.

For technical support, service, or further inquiries, please consult the contact information provided on your Warranty Card or visit the official DOOGEE website.