

## WOLFSTORM NJL01A105S-BX

# WOLFSTORM Steel Front Bumper Instruction Manual

Model: NJL01A105S-BX

## 1. PRODUCT OVERVIEW

The WOLFSTORM Steel Front Bumper is a robust accessory designed to enhance the front-end protection and off-road capabilities of your vehicle. Constructed from durable alloy steel with a multi-layer protective coating, it features a built-in winch plate, D-ring shackle mounts, and provisions for auxiliary lighting.

### Package Contents:

- Front Bumper Assembly
- 2 D-ring Shackles
- Installation Hardware (included with bumper)

## 2. VEHICLE COMPATIBILITY

This WOLFSTORM Steel Front Bumper is specifically designed to fit the following Jeep models:

- Jeep Wrangler JL: 2018-2025
- Jeep Gladiator JT: 2019-2025
- Jeep Wrangler JK: 2007-2018

Please ensure your vehicle is listed above for proper fitment. If you are unsure about compatibility, contact WOLFSTORM customer service for assistance.



# VEHICLE ADAPTATION

COMPATIBLE WITH: **JEEP WRANGLER**

✓ **2018+**

JK/JKU/JL/JLU/GLADIATOR JT FRONT BUMPER



Figure 2.1: Vehicle Adaptation Diagram

## 3. PRODUCT FEATURES AND DESIGN

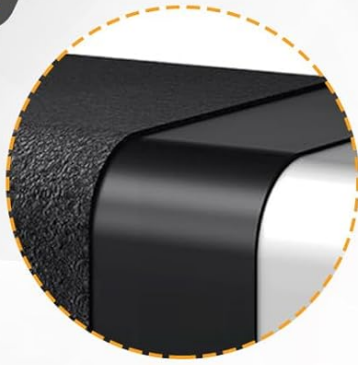
The WOLFSTORM front bumper is engineered for durability and functionality, incorporating several key design elements:

- **Premium Materials:** Constructed from high-strength alloy steel, featuring an electro-galvanized E-coating and a powder-coated finish for enhanced corrosion resistance and durability.
- **Integrated Winch Plate:** Designed with a built-in winch plate capable of supporting winches rated up to 12,000 pounds. *(Winch not included)*
- **D-Ring Shackles:** Includes two D-ring shackles for recovery and towing operations.
- **Bull Bar:** A strong metal bull bar provides additional front-end protection.
- **Light Mounting Brackets:** Features mounting brackets for two pod lights, compatible with factory fog lights. *(Lights not included)*
- **License Plate Location:** Dedicated area for license plate mounting.



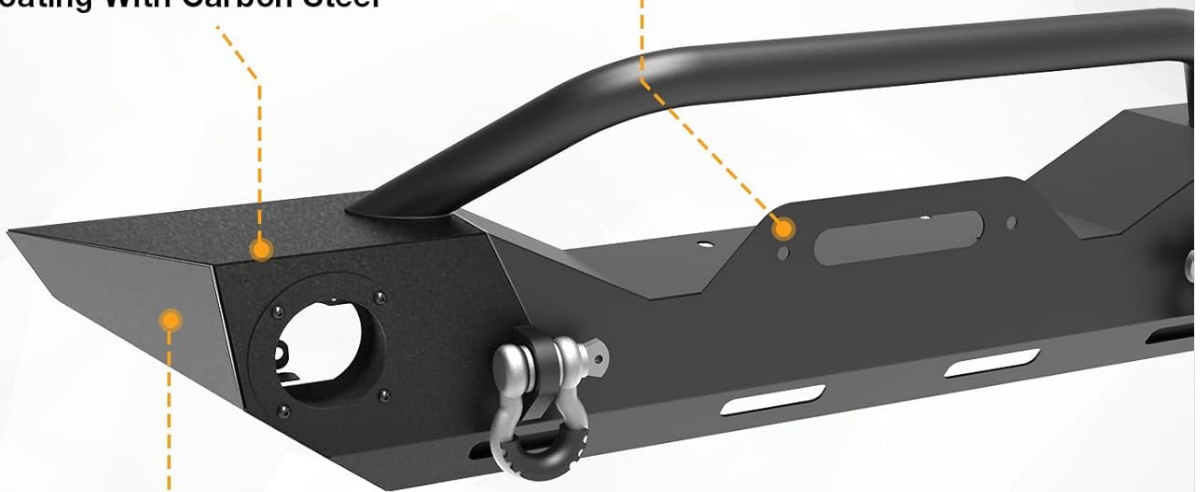
**WOLFSTORM**  
TRUCK BEDS

# PREMIUM MATERIALS



- Layer with Electro-Galvanized E-Coating

- Coating With Carbon Steel



- Powder Coating Finish

**WOLFSTORM** | *Adventure awaits ahead* | Design patented in USA 

Figure 3.1: Premium Materials Construction



**WOLFSTORM**  
ADVENTURE AWAITS AHEAD

## FUNCTION DETAILS



Figure 3.2: Functional Design Details

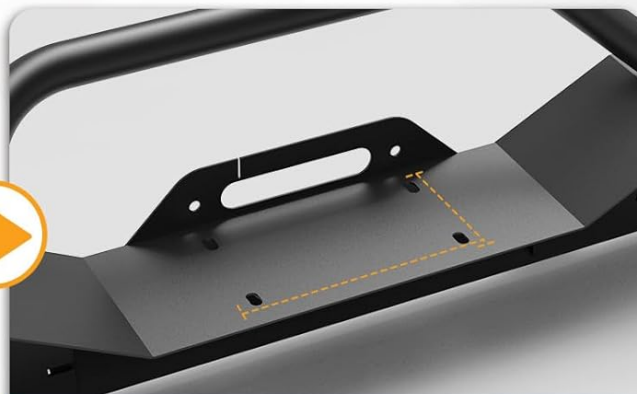




## BUILT-IN WINCH PLATE



NOT INCLUDED



WINCH PLATE INSTALLATION



► Winch Plate With 12000 LBS Weight Capacity

Figure 3.3: Built-in Winch Plate

## 4. SETUP AND INSTALLATION

Installation of the WOLFSTORM Steel Front Bumper is designed to be straightforward. While detailed step-by-step instructions are typically provided with the product or via an installation video, here are general guidelines:

1. **Inspect Upon Receipt:** Before beginning installation, carefully inspect the bumper and all included parts for any damage that may have occurred during transportation. Report any issues to customer service immediately.
2. **Prepare Vehicle:** Ensure your vehicle is parked on a level surface with the engine off and the parking brake engaged. Disconnect the negative terminal of the battery.
3. **Remove Factory Bumper:** Follow your vehicle's manufacturer guidelines to safely remove the existing front bumper. This typically involves disconnecting fog lights (if present) and unbolting the bumper from the frame.
4. **Mount New Bumper:** Align the WOLFSTORM bumper with the vehicle's frame mounting points. Secure it using the provided hardware. Ensure all bolts are tightened to the manufacturer's specifications.
5. **Connect Accessories:** If installing auxiliary lights or a winch, connect them according to their respective

instructions.

6. **Final Check:** Double-check all connections and ensure the bumper is securely mounted before driving.

For a comprehensive visual guide, please refer to the official WOLFSTORM installation video or detailed manual provided with your purchase.



Figure 4.1: Before and After Installation

## 5. OPERATING CONSIDERATIONS

Once installed, the WOLFSTORM Steel Front Bumper enhances your vehicle's capabilities, particularly for off-road use:

- **Off-Road Performance:** The bumper's design contributes to collision protection and improved approach angles, enhancing overall off-roading performance.
- **Winch Usage:** When using a winch mounted on the integrated winch plate, always follow the winch manufacturer's safety guidelines and operating procedures. Ensure the winch is properly secured and rated for your intended use.
- **D-Ring Shackles:** The D-ring shackles are designed for vehicle recovery and towing. Always use appropriate recovery straps and ensure shackles are securely fastened before applying tension.





# OFF-ROAD MODIFICATION

*Collision Protection/Enhanced Off-Roading Performance*



*Figure 5.1: Off-Road Modification Benefits*

## 6. MAINTENANCE

To ensure the longevity and appearance of your WOLFSTORM Steel Front Bumper, regular maintenance is recommended:

- **Regular Cleaning:** Wash the bumper regularly with mild soap and water to remove dirt, mud, and road grime. Avoid abrasive cleaners or harsh chemicals that could damage the powder-coated finish.
- **Inspect for Damage:** Periodically inspect the bumper for any signs of damage, such as chips in the coating, dents, or loose hardware. Address any issues promptly to prevent further deterioration.
- **Hardware Check:** Ensure all mounting bolts and hardware remain tight. Re-tighten as necessary to prevent rattling or instability.
- **Corrosion Prevention:** Although the bumper has a protective coating, promptly clean and touch up any areas where the coating may have been compromised to prevent rust, especially after exposure to harsh conditions or road salt.

## 7. TROUBLESHOOTING

- If you encounter any issues during the installation or use of your WOLFSTORM Steel Front Bumper, consider the following:
- **Fitment Issues:** Double-check that your vehicle model and year are listed in the compatibility section. Ensure all factory components that need to be removed have been.
  - **Loose Components:** If the bumper feels loose or rattles, re-check all mounting bolts and ensure they are tightened securely.
  - **Missing Parts:** If any parts were missing from the package, refer to the package contents list and contact WOLFSTORM customer service immediately.

For further assistance or issues not covered here, please contact WOLFSTORM customer support.

## 8. SPECIFICATIONS







Attribute	Detail
Brand	WOLFSTORM
Model Number	NJL01A105S-BX
Auto Part Position	Front
Material	Alloy Steel
Exterior Finish	Powder Coated, Electro-Galvanized E-coating
Item Weight	23.9 Kilograms (52.6 pounds)
Product Dimensions (LxWxH)	61.18"D x 15.47"W x 10.98"H
Winch Plate Capacity	Up to 12,000 Pounds
Vehicle Service Type	Jeep Wrangler JL (2018-2025), Jeep Gladiator JT (2019-2025), Jeep Wrangler JK (2007-2018)

## 9. WARRANTY AND SUPPORT

WOLFSTORM is committed to providing quality products and customer satisfaction. For any questions regarding your WOLFSTORM Steel Front Bumper, including installation inquiries, product concerns, or support needs, please contact WOLFSTORM customer service directly. Refer to your purchase documentation for specific warranty details, if applicable. You can typically find contact information on the WOLFSTORM official website or through the retailer where the product was purchased.





	<p><a href="#">WOLFSTORM Jeep JK Adaptable Front Bumper Quick Start Manual   WSAJL01A102-BX</a></p> <p>Quick start guide for the WOLFSTORM Jeep JK Adaptable Front Bumper (WSAJL01A102-BX). WOLFSTORM, inspired by wolves and off-roading, offers this bumper for Jeep JK, JL, and JT models. Includes link to installation video.</p>										
	<p><a href="#">Wolfstorm Adaptable Front Bumper for Jeep JK - Quick Start Manual</a></p> <p>Quick start guide for the Wolfstorm Adaptable Front Bumper for Jeep JK models (WSAJT01H101-BX-R), detailing the brand's inspiration drawn from wolves and providing a link to the installation video.</p>										
<p><b>FRONT FENDER FLARES</b></p> <p>User Manual 2019-2022 Wrangler JT</p>  <table border="1"> <tr><td>Model</td><td>WOLFSTORM F</td></tr> <tr><td>Material</td><td>ALUMINUM</td></tr> <tr><td>Product Dimensions</td><td>48.5" L x 12.5" W</td></tr> <tr><td>Package Dimensions</td><td>48.5" L x 12.5" W x 10.5" H</td></tr> <tr><td>Product Weight</td><td>10.5 lbs</td></tr> </table>	Model	WOLFSTORM F	Material	ALUMINUM	Product Dimensions	48.5" L x 12.5" W	Package Dimensions	48.5" L x 12.5" W x 10.5" H	Product Weight	10.5 lbs	<p><a href="#">WOLFSTORM Front Fender Flares Installation Guide for 2019-2022 Jeep Gladiator JT</a></p> <p>Step-by-step installation guide for WOLFSTORM Front Fender Flares (Model NJT01H101-F) designed for the 2019-2022 Jeep Gladiator JT. Includes required tools, parts list, safety warnings, and detailed assembly instructions.</p>
Model	WOLFSTORM F										
Material	ALUMINUM										
Product Dimensions	48.5" L x 12.5" W										
Package Dimensions	48.5" L x 12.5" W x 10.5" H										
Product Weight	10.5 lbs										
	<p><a href="#">Attica Frontier Series Front Bumper Installation Manual for 18-23 Jeep Wrangler JL</a></p> <p>Step-by-step installation guide for the Attica Frontier Series Front Bumper (ATTJL01A110-BX) for 18-23 Jeep Wrangler JL models. Includes tools required, hardware list, and installation instructions.</p>										
<p><b>FENDER FLARES (FRONT + REAR)</b></p> <p>User Manual 2007-2018 Jeep Wrangler JK</p>  <table border="1"> <tr><td>Model</td><td>HAWKLEY F</td></tr> <tr><td>Material</td><td>ALUMINUM</td></tr> <tr><td>Product Dimensions</td><td>48" L x 12" W</td></tr> <tr><td>Package Dimensions</td><td>48" L x 12" W x 10" H</td></tr> <tr><td>Product Weight</td><td>10.5 lbs</td></tr> </table>	Model	HAWKLEY F	Material	ALUMINUM	Product Dimensions	48" L x 12" W	Package Dimensions	48" L x 12" W x 10" H	Product Weight	10.5 lbs	<p><a href="#">Hawkley Fender Flares Installation Manual for 2007-2018 Jeep Wrangler JK</a></p> <p>Comprehensive user manual and installation guide for Hawkley Front and Rear Fender Flares compatible with 2007-2018 Jeep Wrangler JK models. Includes parts list, required tools, and step-by-step instructions for front and rear flare installation.</p>
Model	HAWKLEY F										
Material	ALUMINUM										
Product Dimensions	48" L x 12" W										
Package Dimensions	48" L x 12" W x 10" H										
Product Weight	10.5 lbs										
<p><b>FRONT INNER FENDER FLARES</b></p> <p>User Manual 2019-2022 Wrangler JL 2019-2022 Jeep Gladiator JT</p>  <table border="1"> <tr><td>Model</td><td>WOLFSTORM F</td></tr> <tr><td>Material</td><td>ALUMINUM</td></tr> <tr><td>Product Dimensions</td><td>38" L x 12" W</td></tr> <tr><td>Package Dimensions</td><td>38" L x 12" W x 10" H</td></tr> <tr><td>Product Weight</td><td>10.5 lbs</td></tr> </table>	Model	WOLFSTORM F	Material	ALUMINUM	Product Dimensions	38" L x 12" W	Package Dimensions	38" L x 12" W x 10" H	Product Weight	10.5 lbs	<p><a href="#">WOLFSTORM Front Inner Fender Flares User Manual for Jeep Wrangler JL &amp; Gladiator JT</a></p> <p>User manual for WOLFSTORM Front Inner Fender Flares, compatible with 2018-2022 Jeep Wrangler JL and 2019-2022 Jeep Gladiator JT. Includes product specifications, required tools, parts information, and detailed installation instructions.</p>
Model	WOLFSTORM F										
Material	ALUMINUM										
Product Dimensions	38" L x 12" W										
Package Dimensions	38" L x 12" W x 10" H										
Product Weight	10.5 lbs										