



[Manuals.plus](#) /

> [JULLISON](#) /

> JULLISON Bathroom Exhaust Fan with Humidity Sensor (Model BTFN10HSWGWH) - Instruction Manual

JULLISON BTFN10HSWGWH

JULLISON Bathroom Exhaust Fan with Humidity Sensor (Model BTFN10HSWGWH)

Instruction Manual

INTRODUCTION

This manual provides detailed instructions for the installation, operation, and maintenance of your JULLISON Bathroom Exhaust Fan with Humidity Sensor, Model BTFN10HSWGWH. Please read this manual thoroughly before installation and use to ensure proper function and safety.

SAFETY INFORMATION

WARNING: To reduce the risk of fire, electric shock, or injury to persons, observe the following:

- Installation work and electrical wiring must be done by qualified person(s) in accordance with all applicable codes and standards, including fire-rated construction codes and standards.
- Use this unit only in the manner intended by the manufacturer. If you have questions, contact the manufacturer.
- Before servicing or cleaning the unit, switch power off at the service panel and lock the service disconnecting means to prevent power from being switched on accidentally. When the service disconnecting means cannot be locked, securely fasten a prominent warning device, such as a tag, to the service panel.
- Do not use this fan with any solid-state speed control device.
- This unit is designed for general ventilating use only. Do not use to exhaust hazardous or explosive materials and vapors.
- Duct work must always be vented to the outdoors.
- To prevent back-draft, the fan requires sufficient air for proper combustion and exhausting of gases through the flue (chimney) of fuel-burning equipment. Follow the heating equipment manufacturer's guideline and safety standards such as those published by the National Fire Protection Association (NFPA), and the American Society for Heating, Refrigeration and Air Conditioning Engineers (ASHRAE), and the local code authorities.
- When cutting or drilling into wall or ceiling, do not damage electrical wiring and other hidden utilities.

- The fan is suitable for use over a bathtub or shower when connected to a GFCI protected branch circuit.

PACKAGE CONTENTS

Verify that all components are present before beginning installation:

- Exhaust Fan with Humidity Sensor
- Adjustable Mounting Bracket
- Wiring Nuts
- Instruction Manual

SPECIFICATIONS

Feature	Detail
Model Number	BTFN10HSWGWH
Air Flow Capacity	100 CFM (Cubic Feet Per Minute)
Noise Level	1.2 Sones
Power Source	AC
Voltage	120 Volts
Wattage	26 Watts
Product Dimensions (D x W x H)	12.28" x 12.28" x 7.16"
Cutout Size Required	9.25" x 9.25"
Duct Diameter	4 inches
Certification	ETL Certified, Wet Rated
Material	Metal
Control Method	App (for advanced settings, if applicable)

INSTALLATION

IMPORTANT: Ensure power is OFF at the circuit breaker before starting installation.

This fan can be installed in both new construction and existing construction. No attic access is required for installation.

New Construction Installation

1. **Determine Joist Width:** Measure the distance between ceiling joists to ensure proper fit for the fan housing.
2. **Initial Installation (Configuration 1):** Attach the adjustable mounting brackets to the fan housing.



Image: Diagram illustrating the first step of attaching mounting brackets to the fan unit for new construction.

- Initial Installation (Configuration 2):** Adjust the mounting brackets as needed for your specific joist spacing.



Image: Diagram illustrating the second configuration for attaching mounting brackets to the fan unit for new construction.

- Initial Installation (Configuration 3):** Secure the brackets to the joists.



Image: Diagram illustrating the third configuration for attaching mounting brackets to the fan unit for new construction.

- Final Installation:** Ensure the fan housing is securely mounted between the joists.



Image: Diagram showing the fan housing fully installed between ceiling joists in a new construction setting.

- Connect Duct:** Attach a 4-inch duct to the fan's duct connector. Secure with duct tape or a clamp.

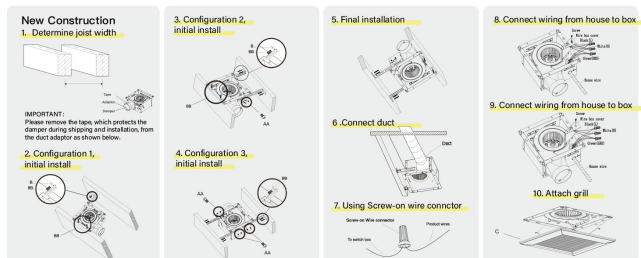


Image: Diagram illustrating the connection of the ductwork to the fan unit.

- Connect Wiring:** Connect the house wiring to the fan's wiring using the provided wiring nuts. Ensure proper grounding.

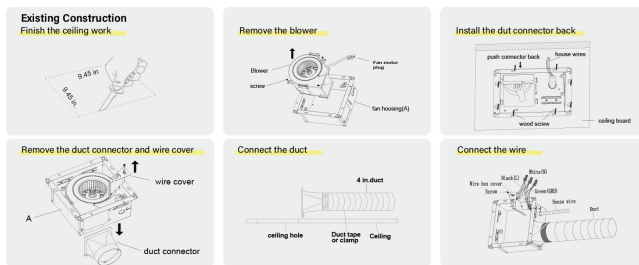


Image: Diagram detailing the electrical wiring connections for the fan.

8. **Attach Grille:** Once wiring and ductwork are complete, attach the grille to the fan housing.

Existing Construction Installation

1. **Prepare Ceiling Opening:** Cut an opening in the ceiling measuring 9.25 inches x 9.25 inches.



Image: Illustration of the fan unit, highlighting the removable cover and washable filter for maintenance.

2. **Remove Blower:** Disconnect and remove the blower assembly from the fan housing.
3. **Install Duct Connector:** Install the duct connector back into the fan housing.
4. **Connect Duct:** Attach a 4-inch duct to the fan's duct connector. Secure with duct tape or a clamp.
5. **Connect Wiring:** Connect the house wiring to the fan's wiring using the provided wiring nuts. Ensure proper grounding.
6. **Reinstall Blower and Grille:** Reinstall the blower assembly and then attach the grille to the fan housing.

OPERATION

Humidity Sensor Function

The JULLISON Bathroom Exhaust Fan features an integrated humidity sensor that automatically activates the fan when moisture levels in the room exceed a set threshold. This ensures efficient moisture removal without manual intervention.



Image: Close-up view of the humidity sensor adjustment dials located within the fan unit, allowing users to set the activation threshold.

Adjusting Humidity Sensitivity

To adjust the humidity sensor's sensitivity:

1. Turn off power to the fan at the circuit breaker.
2. Carefully remove the fan grille.

3. Locate the humidity adjustment dials inside the fan housing. There are typically two dials: one for humidity percentage (e.g., 50-90%) and one for run time (e.g., 5-60 minutes).
4. Use a small screwdriver to adjust the dials to your desired settings. A higher humidity percentage setting means the fan will activate at higher moisture levels. The run time setting determines how long the fan operates after the humidity drops below the threshold.
5. Replace the fan grille and restore power.

General Operation

Once installed and configured, the fan will operate automatically based on the humidity sensor settings. It can also be controlled via a standard wall switch for manual on/off operation.

MAINTENANCE

Regular cleaning and maintenance will ensure optimal performance and longevity of your exhaust fan.

1. **Power Disconnection:** Always disconnect power to the fan at the circuit breaker before performing any maintenance.
2. **Grille Cleaning:** Remove the fan grille by gently pulling down. Wash the grille with mild soap and water, then rinse and dry thoroughly.
3. **Fan Housing and Blower Cleaning:** With the grille removed, carefully wipe down the fan housing and blower wheel with a damp cloth. Do not immerse electrical components in water.

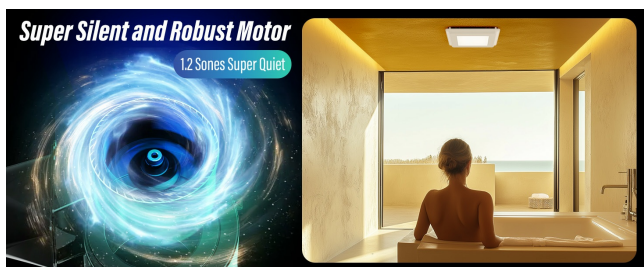


Image: Internal view of the exhaust fan, showing the blower, motor, and duct connection, illustrating components accessible for cleaning.

4. **Ductwork Inspection:** Periodically inspect the ductwork for any obstructions or damage. Ensure the duct is securely connected and free of kinks.
5. **Reassembly:** Once all components are clean and dry, reassemble the fan by reattaching the blower (if removed) and then the grille. Restore power.

TROUBLESHOOTING

If you experience issues with your JULLISON exhaust fan, refer to the following table for common problems and solutions.

Problem	Possible Cause	Solution
Fan does not turn on.	No power to the unit. Faulty wiring connection. Humidity sensor not detecting moisture.	Check circuit breaker and wall switch. Verify all wiring connections are secure (consult a qualified electrician if unsure). Adjust humidity sensor sensitivity to a lower percentage.

Fan is excessively noisy.	Obstruction in ductwork or fan. Loose mounting. Damaged blower wheel.	Inspect ductwork and fan for debris. Remove any obstructions. Ensure fan housing is securely mounted. Contact customer support if blower wheel is damaged.
Fan runs continuously or not at all.	Humidity sensor miscalibration or malfunction. Incorrect humidity sensor settings.	Adjust humidity sensor sensitivity and run time settings. If problem persists, the sensor may be faulty; contact customer support.
Poor ventilation/steam not clearing.	Ductwork obstruction or leak. Fan size inadequate for room. Humidity sensor set too high.	Check ductwork for obstructions or leaks. Ensure proper ducting. Verify fan CFM rating is appropriate for room size (up to 105 sq. ft. for 100 CFM). Lower humidity sensor activation percentage.

WARRANTY

JULLISON products are manufactured to high-quality standards and are warranted to the original consumer purchaser to be free from defects in material and workmanship for a period of **[Insert Warranty Period Here, e.g., One (1) Year]** from the date of purchase. This warranty does not cover normal wear and tear, misuse, abuse, neglect, improper installation, or damage caused by accident or natural disaster. For warranty service, please contact JULLISON customer support with your proof of purchase.

SUPPORT

For technical assistance, troubleshooting not covered in this manual, or warranty inquiries, please contact JULLISON customer support.

Website: [Visit the JULLISON Store on Amazon](#)

Email: [Insert Customer Support Email Here, if available]

Phone: [Insert Customer Support Phone Number Here, if available]