

Jonard Tools CM-RJ45/8

Jonard Tools CM-RJ45/8 RJ45 Cable Identifiers for CM-100 Instruction Manual

Model: CM-RJ45/8

INTRODUCTION

This manual provides essential information for the proper use and maintenance of the Jonard Tools CM-RJ45/8 RJ45 Cable Identifiers. These identifiers are designed to work exclusively with the Jonard Tools CM-100 Cable Mapper Pro, facilitating efficient identification and mapping of RJ45 network cables.

PRODUCT OVERVIEW

The CM-RJ45/8 kit includes eight (8) numbered RJ45 network cable identifiers. These identifiers are passive devices that, when connected to network cables, allow the CM-100 Cable Mapper Pro to distinguish between multiple cables connected to a patch panel or wall plate.

Key Features:

- **Numbered Identification:** Each identifier is clearly numbered from 1 to 8 for easy port mapping.
- **CM-100 Compatibility:** Specifically designed to integrate with the Jonard Tools CM-100 Cable Mapper Pro.
- **Simultaneous Mapping:** Enables mapping of up to 8 network cables concurrently.

PACK OF 8 NETWORK IDENTIFIERS

Replacement Identifiers for CM-100 Cable Mapper Pro

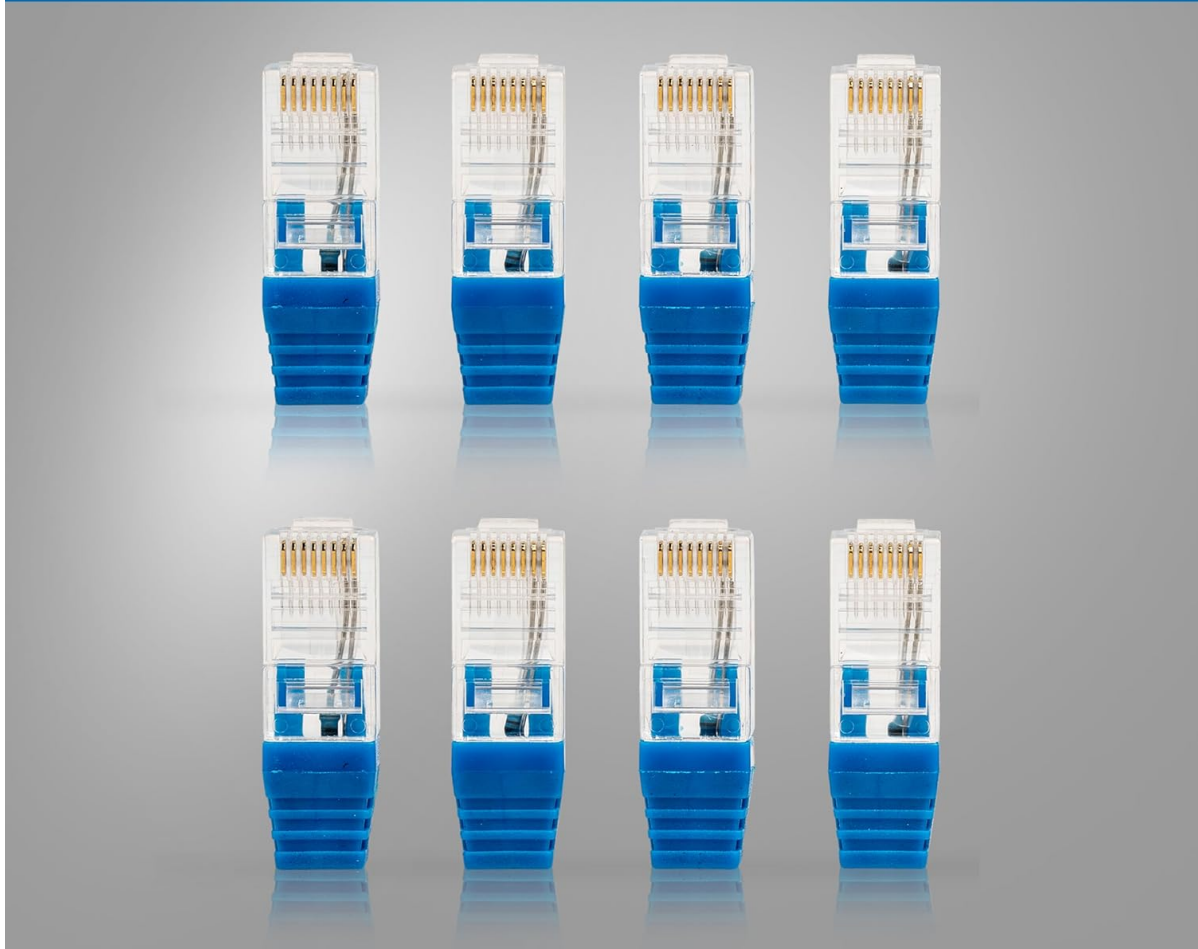


Image: A set of eight numbered RJ45 cable identifiers, designed for use with the CM-100 Cable Mapper Pro.

SETUP

1. **Ensure CM-100 is Ready:** Verify that your Jonard Tools CM-100 Cable Mapper Pro is powered on and functioning correctly. Refer to the CM-100 manual for its specific setup instructions.
2. **Connect Identifiers:** Plug each CM-RJ45/8 identifier into the RJ45 ports of the network cables you wish to map. For example, if you are mapping cables from a patch panel, connect one identifier to each cable's end at the patch panel.
3. **Prepare Remote End:** At the remote end of the cable run (e.g., wall plate), ensure the CM-100 Cable Mapper Pro is ready to receive the signal.

EASY IDENTIFICATION

Clearly Numbered for Quick Port Identification

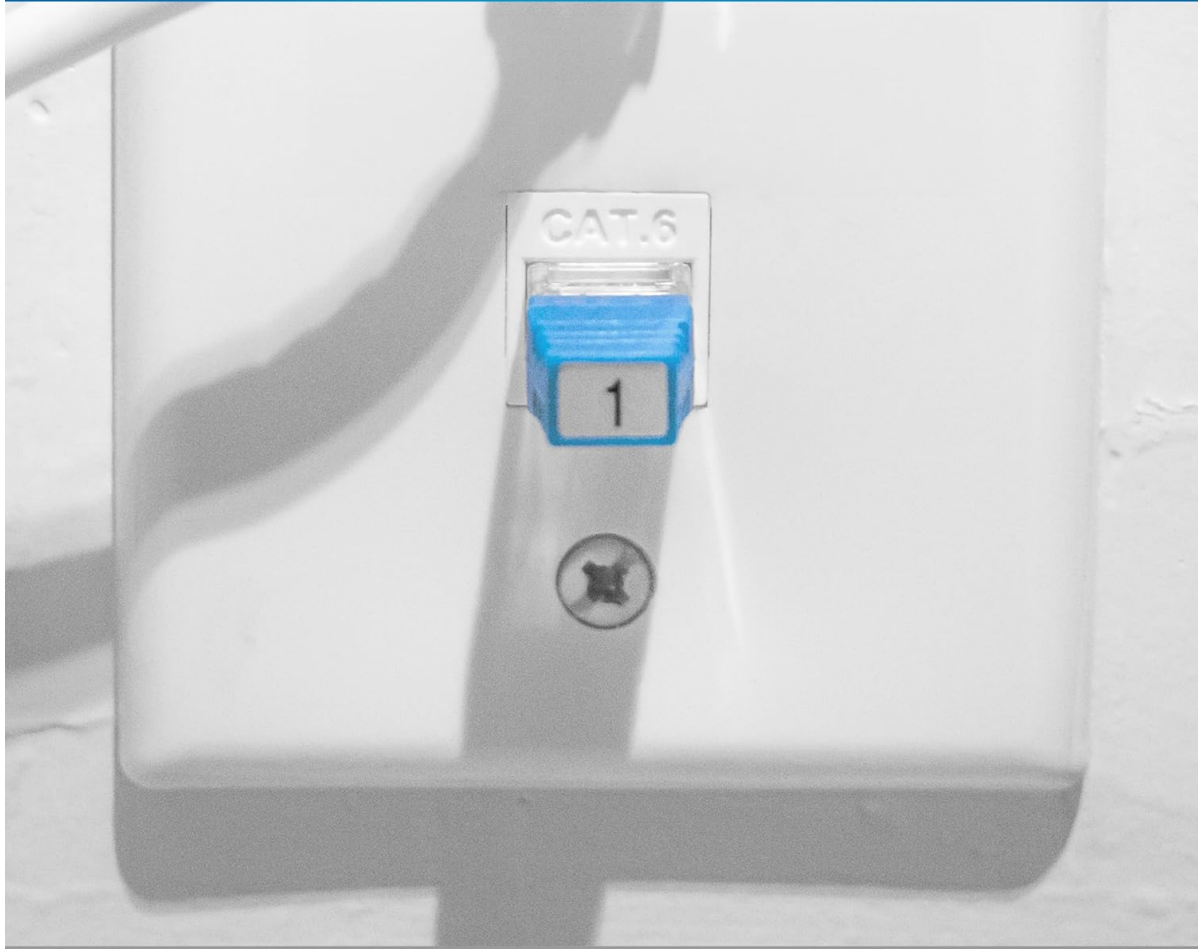


Image: A numbered RJ45 cable identifier inserted into a network wall plate, demonstrating its application for port identification.

OPERATING INSTRUCTIONS

Follow these steps to use the CM-RJ45/8 identifiers with your CM-100 Cable Mapper Pro:

1. **Connect CM-100:** Connect the main unit of the CM-100 Cable Mapper Pro to the network cable at the testing location (e.g., the switch end or the other end of the cable run).
2. **Initiate Test:** On the CM-100, select the appropriate test mode for RJ45 cable mapping. The CM-100 will send a signal through the cable.
3. **Identify Cable:** The CM-100's display will show the identifier number corresponding to the cable it is connected to. This allows you to quickly match the remote end of the cable to its numbered identifier.
4. **Repeat for All Cables:** Repeat the process for each cable connected to an identifier until all desired cables are mapped.

STREAMLINE CABLE MAPPING

Map Up to 8 Network Cables Simultaneously



Image: A technician using the CM-100 Cable Mapper Pro to test a network cable connected within a server rack, demonstrating cable mapping in a live environment.

CM-100 COMPATIBLE

Ensures Accurate Cable Mapping & Issue Detection



Image: The CM-100 Cable Mapper Pro connected to a network cable, with an RJ45 identifier visible, illustrating the compatibility and function of the system.

MAINTENANCE

- **Cleaning:** Keep the identifiers clean and free from dust and debris. Use a soft, dry cloth for cleaning. Avoid abrasive cleaners or solvents.
- **Storage:** Store the identifiers in a cool, dry place, away from direct sunlight and extreme temperatures. Keep them in their original packaging or a protective case to prevent damage.
- **Inspection:** Periodically inspect the RJ45 connectors for any signs of wear, bent pins, or damage. Replace any damaged identifiers to ensure accurate testing.

TROUBLESHOOTING

Problem	Possible Cause	Solution
---------	----------------	----------

Problem	Possible Cause	Solution
CM-100 does not detect identifier.	Identifier not fully inserted. Damaged identifier. Cable fault (open, short). CM-100 not in correct test mode.	Ensure identifier is securely seated in the RJ45 port. Try a different identifier. Test the cable for faults using the CM-100's primary functions. Verify the CM-100 is set to the correct mapping or identification mode.
Incorrect identifier number displayed.	Multiple identifiers connected to the same cable. Identifier malfunction.	Ensure only one identifier is connected to each cable being tested. Try a different identifier to confirm if the issue is with the identifier itself.





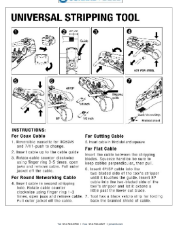
SPECIFICATIONS

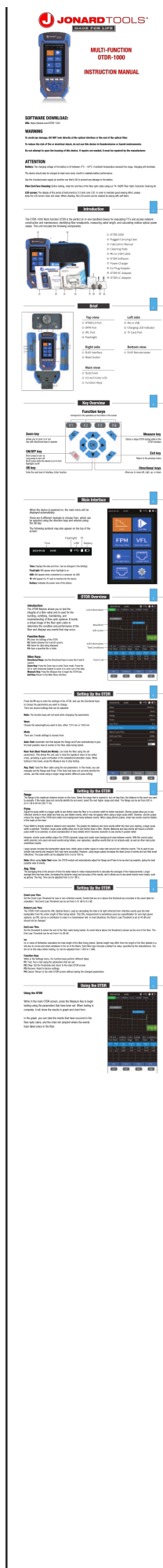
- **Model:** CM-RJ45/8
- **Compatibility:** Jonard Tools CM-100 Cable Mapper Pro
- **Connector Type:** RJ45
- **Cable Type:** Ethernet
- **Number of Identifiers:** 8 (numbered 1-8)
- **Dimensions (per identifier):** Approximately 1.5 x 0.75 x 1.5 inches
- **Weight (total kit):** Approximately 0.81 ounces
- **Color:** Clear with blue accents

WARRANTY AND SUPPORT

For information regarding warranty coverage, technical support, or replacement parts for your Jonard Tools CM-RJ45/8 RJ45 Cable Identifiers, please refer to the documentation provided with your CM-100 Cable Mapper Pro or visit the official Jonard Tools website. Specific warranty details for this accessory are typically covered under the main CM-100 product warranty.

Official Website: www.jonard.com

 <p>CTV-8K MULTIFUNCTION CABLE TV TESTER WITH BUILT-IN PoE AND HDMI TESTER INSTRUCTION MANUAL</p>	<p>CTV-8K Multifunction Cable TV Tester Instruction Manual Jonard Tools</p> <p>Comprehensive instruction manual for the Jonard Tools CTV-8K Multifunction Cable TV Tester, detailing its features, operation, specifications, and safety information for installers and technicians.</p>
 <p>CTV-8K MULTIFUNCTION CABLE TV TESTER WITH BUILT-IN PoE AND HDMI TESTER INSTRUCTION MANUAL</p>	<p>Jonard Tools CTV-8K Multifunction Cable TV Tester Instruction Manual</p> <p>Comprehensive instruction manual for the Jonard Tools CTV-8K Multifunction Cable TV Tester. This guide details its features, operation, safety precautions, and specifications for testing IP, Analog, and HD Coaxial cameras, along with PoE, HDMI, and various network diagnostic functions.</p>
 <p>FPM-55 OPTICAL POWER METER WITH BUILT-IN PoE AND HDMI TESTER INSTRUCTION MANUAL</p>	<p>Jonard Tools FPM-55 Optical Power Meter Instruction Manual</p> <p>Comprehensive instruction manual for the Jonard Tools FPM-55 Optical Power Meter, detailing its features, specifications, operation, key functions, troubleshooting guide, and warranty information.</p>
 <p>MS-526, MS-446, MS-426, MS-326, MS-316, MS-306, MS-6, MS-26, MS-336</p>	<p>Jonard Tools Mid Span Slit & Ring Tools Data Sheet - MS-526, MS-446, MS-426, MS-326, MS-316, MS-306, MS-6, MS-26, MS-336</p> <p>Detailed data sheet for Jonard Tools' patented Mid Span Slit & Ring Tools, designed for efficient and safe access to fiber optic cables. Includes specifications, usage instructions, and replacement parts for models MS-526, MS-446, MS-426, MS-326, MS-316, MS-306, MS-6, MS-26, MS-336, and MS-600.</p>
 <p>UNIVERSAL STRIPPING TOOL</p>	<p>Jonard Tools Universal Stripping Tool - Cable Stripping Guide</p> <p>Comprehensive instructions for the Jonard Tools Universal Stripping Tool (UST Series), covering coax, networking, and flat cable stripping with detailed steps and operational guidance.</p>



[Jonard Tools OTDR-1000 Multi-Function OTDR: Instructions and Specifications](#)

Comprehensive instructions and technical specifications for the Jonard Tools OTDR-1000, a multi-function Optical Time Domain Reflectometer used for testing, certifying, and maintaining fiber optic cable integrity.

RJ45 Cable
Identifiers for CM-100, Pack of 8 - CM-RJ45/8 | Data Sheet

Printer Test Replacement Since 1958

This product is a set of 8 replacement RJ45 network identifiers for the **CM-100** Cable Mapper Pro. These identifiers feature the following:

- Maps or identifies up to 8 Network Cables simultaneously
- Designed to easily identify the commercial part
- Compatible with the CM-100 Cable Mapper Pro
- Includes (8) RJ45 Network Cable Identifiers for CM-100

SPECIFICATIONS	
TYPE	RJ45
QUANTITIES	8 RJ45 Identifiers
DIMENSIONS	1.50" x 0.75" x 1.50" (3.8 cm x 1.9 cm x 3.8 cm)
WEIGHT	0.044 lb (20 g)
WEIGHT	0.044 lb (20 g) (all)
UPC #	010132430000

MADE FOR LIFE
GUARANTEED FOR LIFE

For: 804-780-0700 | Fax: 804-780-0337 | jonard.com

[pdf] Specifications Datasheet Dimension Guide

Data Sheet RJ45 Cable Identifiers for CM 100 Pack of 8 Jonard Tools jonard sites default files product |||

Premier Tool Manufacturer Since 1958 RJ45 Cable Identifiers for CM-100, Pack of 8 -

CM-RJ45/8 Data Sheet This product is a set of 8 replacement RJ45 network

identifiers for the CM-100 Cable Mapper Pro. These identifiers feature the following:

Maps or identifies up to 8 Network Cables simultaneou...

lang:es score:13 filesize: 1.1 M page_count: 1 document date: 2025-01-07