



Manuals.plus /

› iHeylinkit /

› iHeylinkit X6 Wireless CarPlay and Android Auto Adapter Instruction Manual

iHeylinkit X6

iHeylinkit X6 Wireless CarPlay and Android Auto Adapter Instruction Manual

Model: X6

Brand: iHeylinkit

INTRODUCTION

The iHeylinkit X6 Wireless CarPlay and Android Auto Adapter is designed to convert your vehicle's existing wired CarPlay or Android Auto system into a wireless connection. This device facilitates hands-free navigation, music playback, voice commands, and phone calls, enhancing your driving experience by eliminating the need for physical cable connections to your smartphone.

WHAT'S IN THE BOX

- iHeylinkit X6 Wireless Adapter (Main Unit)
- USB to USB-C Converter
- User Manual



Image: The iHeylinkit X6 Wireless Adapter, a compact black device with a short USB-A cable, shown alongside a separate USB-A to USB-C converter. These are the primary components included in the package.

COMPATIBILITY

This wireless adapter is designed for vehicles that already support factory-installed wired Apple CarPlay or Android Auto. It is compatible with:

- **iPhones:** iOS 10 or later (iPhone 6 and above series).
- **Android Phones:** Android 11 or later.
- **Vehicle Model Years:** 2018-2025.

Important Note: This product is not compatible with Tesla or BMW models. It will not function in cars without built-in wired CarPlay or Android Auto functionality.

For a comprehensive list of compatible vehicles, please refer to the official compatibility lists:

- [Apple CarPlay Compatible Models](#)
- [Android Auto Compatible Vehicles](#)

Compatible
cars models
800+



Wide Compatibility with **98%** Cars



10

iPhone 6-16 and above
series with ios 10+



11

Android 11
and above

*The **BMW** and **Tesla**
models cannot use the product



Carplay

ATTENTION

Scan QR code to check if
mode of your car



Android Auto

Image: A visual representation of the adapter's wide compatibility, indicating support for iPhone iOS 10+ and Android 11+ devices, while explicitly stating non-compatibility with BMW and Tesla vehicles.

SETUP INSTRUCTIONS

Follow these steps for initial setup and connection:

- 1. Plug in the Adapter:** Connect the iHeylinkit X6 adapter into your car's USB port that supports wired CarPlay or Android Auto. Use the provided USB to USB-C converter if your car has a USB-C port.
- 2. Activate Phone's Wireless Features:** On your smartphone, ensure both Wi-Fi and Bluetooth are turned on.
- 3. Connect via Bluetooth:** Open your phone's Bluetooth settings and search for available devices. Select the device named "Carsmart-Adapter-****" (the last four characters will be unique to your device).
- 4. Confirm Pairing:** A Bluetooth pairing request will appear on your phone. Confirm the code displayed and tap "Pair."
- 5. Allow Sync (Optional):** You may be prompted to allow contacts and favorites to sync. You can choose to "Allow" or "Don't Allow" as desired; the adapter will still function.
- 6. Automatic Connection:** After the initial setup, the adapter will automatically connect to your phone within seconds when you start your car.

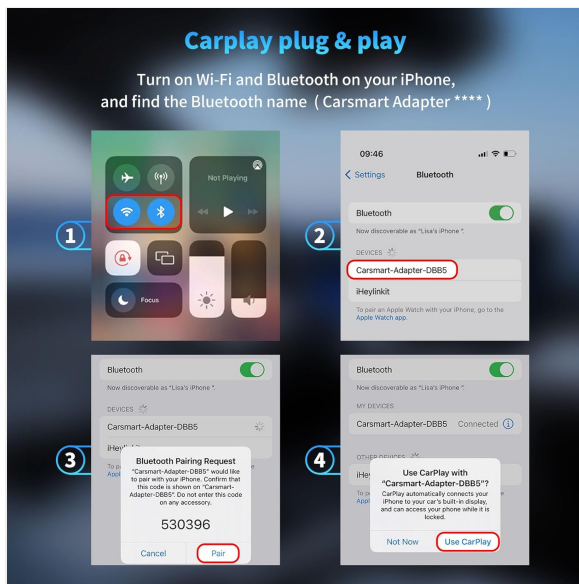


Image: An iPhone screen illustrating the steps to connect to the "Carsmart-Adapter" via Bluetooth for CarPlay, including the pairing request and confirmation.

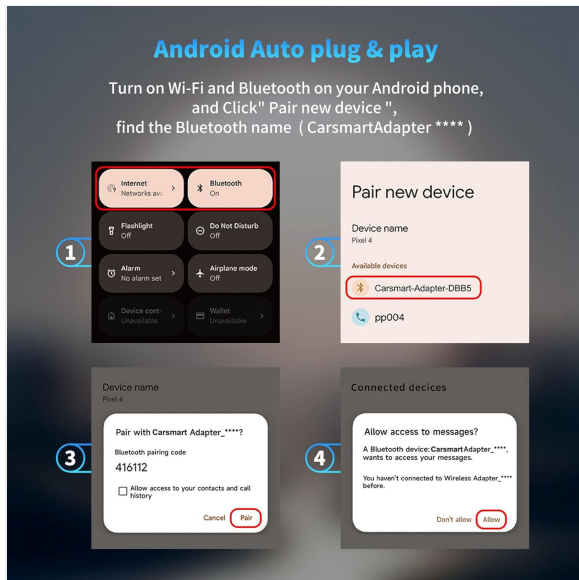


Image: An Android phone screen demonstrating the Bluetooth pairing process for Android Auto, showing how to find and connect to the "Carsmart-Adapter."

Setup Video Guides

Your browser does not support the video tag.

Video: This video provides a detailed guide on setting up the iHeylinkit Wireless CarPlay Adapter, demonstrating the connection process and initial use.

Your browser does not support the video tag.

Video: This video demonstrates the functionality of the iHeylinkit Wireless Adapter with Android Auto, showcasing its ease of use and seamless integration.

OPERATING THE ADAPTER

Once connected, the iHeylinkit X6 adapter provides a seamless wireless experience for both CarPlay and Android Auto. You can access all your favorite apps and features directly on your car's infotainment screen.

Key Features:

- **Navigation:** Use your preferred navigation apps (e.g., Apple Maps, Google Maps) wirelessly.
- **Music & Audio:** Stream music, podcasts, and audiobooks from your phone.
- **Voice Commands:** Utilize Siri or Google Assistant for hands-free control.
- **Phone Calls:** Make and receive calls directly through your car's system.
- **Automatic Reconnection:** The adapter automatically connects to your paired phone upon starting the vehicle.

Control Methods:

You can interact with CarPlay or Android Auto using your car's native controls:

- **Touch Screen:** Directly interact with the car's display.
- **Steering Wheel Controls:** Use existing buttons on your steering wheel.
- **Knob Control:** Navigate menus using the car's rotary knob.
- **Voice Assistant:** Activate Siri or Google Assistant for voice commands.



Image: A driver interacting with the car's infotainment system using voice commands, with the CarPlay interface visible on the screen, demonstrating hands-free operation.

Video Playback:

Apple CarPlay and Android Auto do not natively support video playback on the car's screen due to safety regulations. While audio from video streaming apps on your phone can be played through the car stereo, direct

video display is not supported by this adapter.

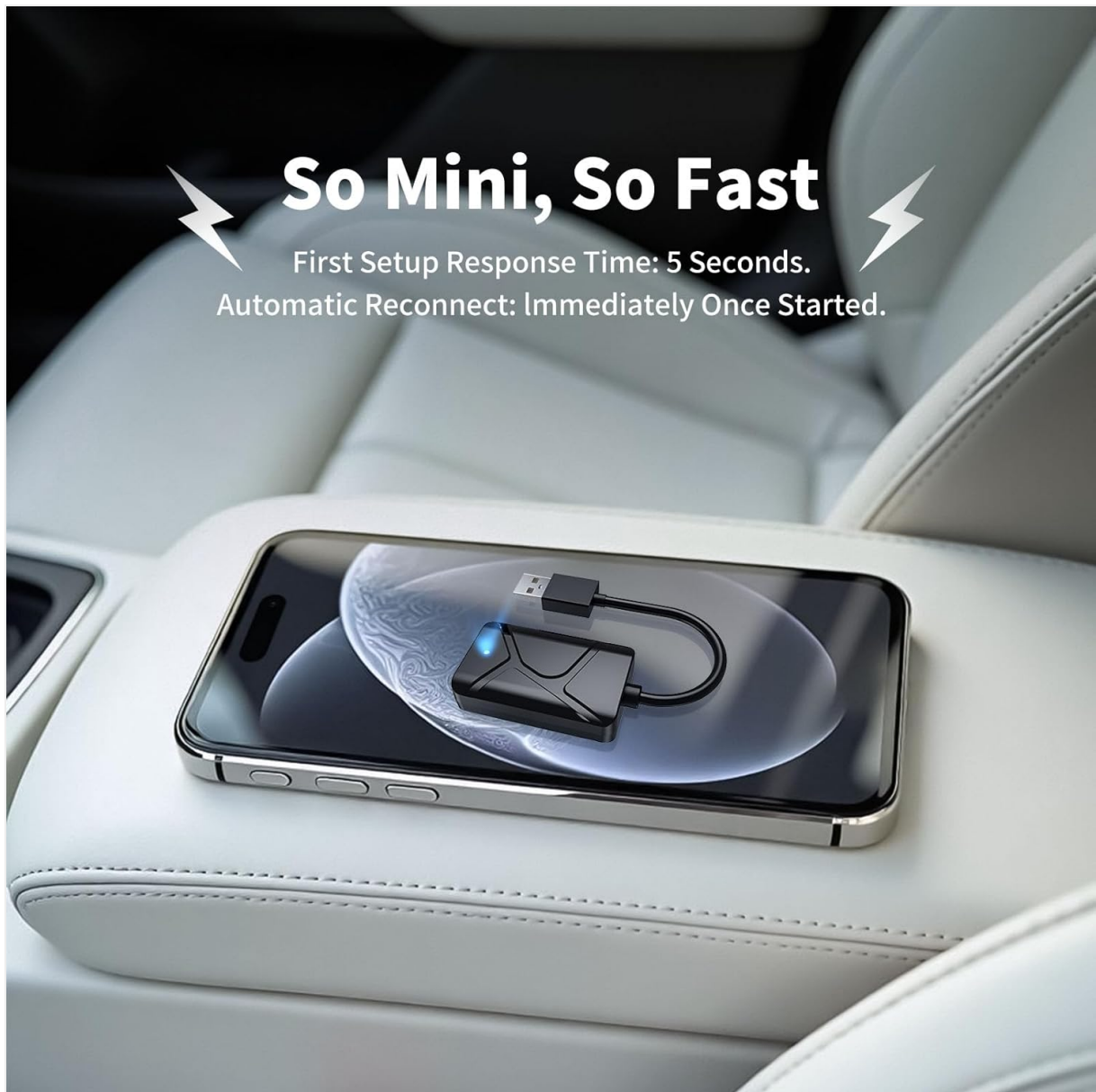


Image: A graphic clarifying that Apple CarPlay and Android Auto do not include support for video playback, though audio from streaming services can be played.

MAINTENANCE: FIRMWARE UPDATES

To ensure optimal performance and resolve potential connection issues, regularly check for and install firmware updates for your iHeylinkit X6 adapter. This process is straightforward:

1. **Connect to Wi-Fi:** Turn on your phone's Wi-Fi and Bluetooth. Connect to the Wi-Fi network named "Carsmart-Adapter-****". The default password is **88888888**.
2. **Access Settings Page:** Once connected to the adapter's Wi-Fi, open your phone's default web browser and enter **192.168.8.1** in the address bar.
3. **Reset & Update:** On the settings page, locate and click "Restore Factory Settings." After this, the system will automatically check for the latest firmware version. If an update is available, follow the on-screen instructions to complete the installation.

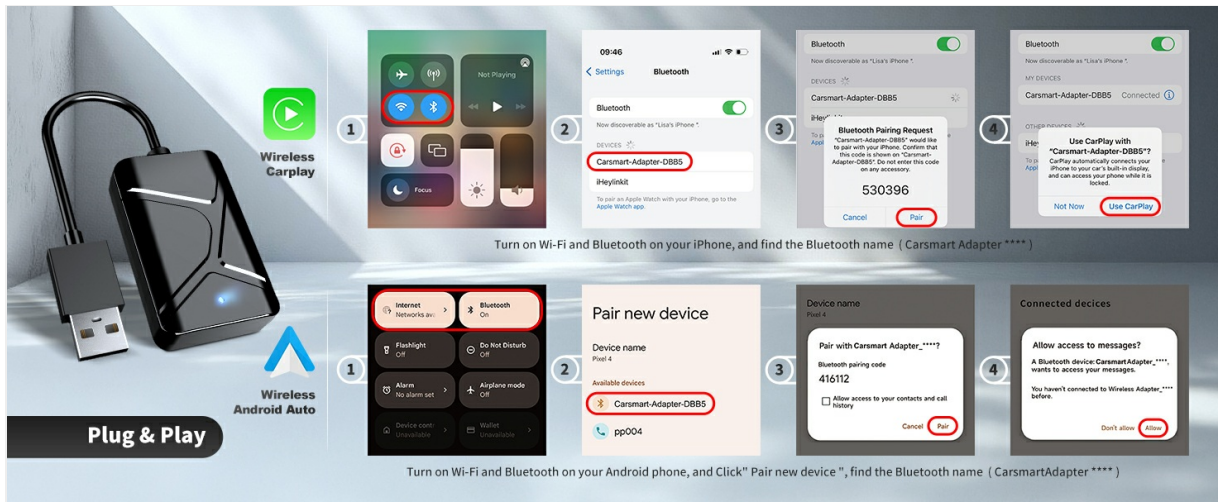


Image: Two smartphone screens displaying the firmware update interface for the CarSmart Adapter, showing options for checking the build number, Wi-Fi AP, and initiating a factory reset or update.

TROUBLESHOOTING

If you encounter issues with your iHeylinkit X6 adapter, refer to the following common problems and solutions:

| Problem | Solution |
|--|--|
| Adapter does not respond when plugged in. | First, confirm that your vehicle has factory wired CarPlay or Android Auto. If your car only has Android Auto, you may need to manually turn on your Android phone's Bluetooth and search for the adapter's SSID name. |
| Cannot connect to the adapter. | Check if your phone's Bluetooth is already occupied by another device. If not, restart your phone and try connecting to the adapter's Bluetooth SSID again. |
| No sound from the phone or sound delay. | Ensure the correct sound channel is selected to "Smart-XXXX" during calls. For sound or navigation delays, troubleshoot network issues and restart your phone. |
| Can this product be paired with more than one phone? | Yes, but to switch between phones, ensure the Bluetooth and Wi-Fi of the previously connected phone are turned off. |

SPECIFICATIONS

| Feature | Detail |
|-------------------------|--|
| Model Number | X6 |
| Product Dimensions | 4.17 x 0.9 x 0.4 inches |
| Item Weight | 1.13 ounces |
| Connector Type | USB Type C (with included USB-A converter) |
| Compatible Devices | Apple CarPlay, Android Auto |
| Compatible Phone Models | iPhone 6 and above (iOS 10+), Android 11 and above |
| Input Voltage | 5 Volts |
| Amperage | 0.3 Amps |
| Total USB Ports | 2 (referring to car's ports, adapter uses one) |
| Special Feature | Automatic Off, Automobile Connector |



Image: A diagram illustrating the compact and portable design of the iHeylinkit X6 adapter, with its dimensions clearly marked.

WARRANTY AND SUPPORT

The iHeylinkit X6 Wireless CarPlay and Android Auto Adapter comes with the following:

- **Warranty:** 2 years replacement only (no repair service).
- **Technical Support:** 7x24 hour online support from a North American local technical team, providing quick responses to compatibility and operational issues.