



Manuals.plus /

- › LINSY HOME /
- › LINSY HOME Sectional Sleeper Sofa with Pull Out Couch Bed - User Manual

## LINSY HOME Sleeper Sofa 1

# LINSY HOME Sectional Sleeper Sofa with Pull Out Couch Bed - User Manual

Model: Sleeper Sofa 1

## 1. INTRODUCTION

---

Thank you for choosing the LINSY HOME Sectional Sleeper Sofa. This manual provides essential information for the assembly, operation, maintenance, and troubleshooting of your new furniture. Please read these instructions carefully to ensure proper use and longevity of your sofa.



Image 1.1: The LINSY HOME Sectional Sleeper Sofa, featuring a pull-out bed and storage chaise, integrated into a modern living space.

## 2. PRODUCT OVERVIEW

---

The LINSY HOME Sectional Sleeper Sofa is designed for versatility and comfort, featuring a modular structure that adapts to various living spaces. Key features include:

- **Plush Corduroy Fabric:** High-quality, soft, breathable, and easy-to-clean material.
- **Convertible Sofa Bed:** Easily transforms from a sofa to a bed using pull-out straps and hidden wheels.
- **Modular Design:** Allows for customizable configurations to fit your space.
- **Integrated Storage:** Chaise section includes storage space for blankets, pillows, and other items.
- **Multifunctional Armrests:** Equipped with USB and Type-C charging ports, cup holders, and side storage pockets.
- **Sturdy Construction:** Features a durable wood and metal frame with a maximum weight capacity of 660 lbs.

## Life-Convenient Design

- ✔ USB charging port
- ✔ Storage pocket
- ✔ Two cup holders
- ✔ Widen armrest



Image 2.1: Detail of the sofa's armrest, highlighting the USB charging port, cup holder, and side storage pocket for convenience.



Image 2.2: A close-up view of the sofa's plush corduroy fabric, emphasizing its soft texture and ribbed design.



Image 2.3: Various modular arrangements of the sofa, illustrating its adaptability to different room layouts.

### 3. SETUP AND ASSEMBLY INSTRUCTIONS

---

The LINSY HOME Sectional Sleeper Sofa is designed for straightforward assembly. All necessary tools are included. It is recommended to have two people for assembly.

#### 3.1 Unpacking

- The sofa arrives in multiple boxes (typically 3). Ensure all boxes are present before beginning assembly.
- Carefully remove all components from the packaging. Retain packaging materials until assembly is complete and you are satisfied with the product.

#### 3.2 Component Identification

Identify all parts against the included parts list. Common components include:

- Sofa sections
- Chaise section
- Armrests
- Backrests
- Legs
- Connection brackets
- Cushions

#### 3.3 Assembly Steps

1. **Attach Legs:** Securely attach the legs to the bottom of each sofa and chaise section.
2. **Connect Sections:** Align the metal sliding pieces on the sides of the sofa sections and slide them together until they lock. Ensure they are straight to facilitate connection.
3. **Attach Armrests:** Connect the armrests to the main sofa sections. If brackets are misaligned, they can be adjusted using the provided Allen wrench.
4. **Place Cushions:** Position the seat and back cushions onto the assembled frame.

Refer to the detailed instructions and diagrams provided in your product packaging for specific steps and visual guidance.



Image 3.1: Visual representation of the sofa's comfortable fabric, soft filling, and the simple metal connectors used for assembly.

## 4. OPERATING INSTRUCTIONS

---

### 4.1 Converting Sofa to Bed

The sofa can be easily converted into a bed without tools:

1. **Pull Handle:** Locate the pull straps on the front of the sofa section. Pull the handle steadily at a constant speed on both sides.
2. **Extend Bed:** The hidden wheels will allow the bed section to slide out smoothly.
3. **Lift and Press:** Lift the extended section slowly (both sides simultaneously) and then press down both sides to lock it into a flat bed position.

**Tip:** Pull the sofa out slowly to avoid the wheels getting derailed.



Sofa by Day



Bed by Night

Image 4.1: The sofa in its two primary configurations: a standard L-shaped sofa and a fully extended bed.

# Pull Out Sofa Bed

Tips: Pull the sofa out slowly to avoid the wheels getting derailed

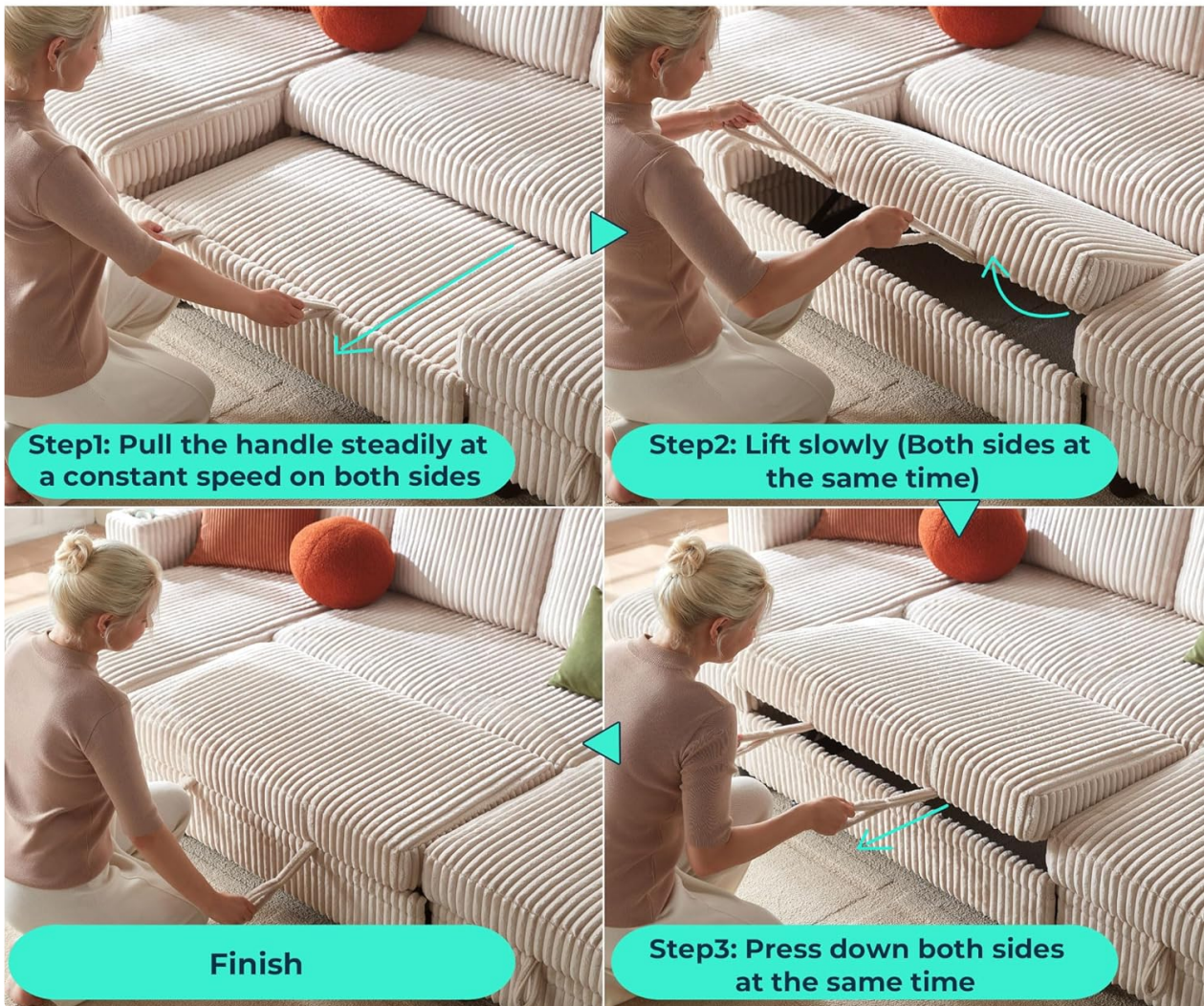


Image 4.2: Step-by-step illustration of the pull-out mechanism to transform the sofa into a bed.

## 4.2 Using the Storage Chaise

The chaise section offers convenient storage:

1. **Lift Chaise Top:** Gently lift the top cushion of the chaise section. It is hinged to provide access to the storage compartment underneath.
2. **Store Items:** Place blankets, pillows, toys, or other items inside the compartment.
3. **Close Chaise:** Lower the top cushion back into place, ensuring it is securely seated.



Image 4.3: The storage chaise with its lid open, showing ample space for various household items.



Image 4.4: A user demonstrating how to access the storage compartment within the chaise.

### 4.3 USB Charging Ports

The armrest includes built-in USB and Type-C charging ports for your electronic devices. Simply plug your

device's charging cable into the appropriate port.



Image 4.5: A tablet being charged via the USB port located on the sofa's armrest.

## 5. MAINTENANCE

---

Proper care will extend the life and appearance of your LINSY HOME sofa.

- **Fabric Care:** The plush corduroy fabric is designed to be easy to clean. For minor spills, blot immediately with a clean, dry cloth. For more stubborn stains, use a mild fabric cleaner according to the product instructions.
- **Removable Cushion Covers:** The seat cushion covers are removable for easier cleaning. Follow the care instructions on the label for washing.
- **General Cleaning:** Regularly vacuum the sofa using an upholstery attachment to remove dust and debris.
- **Frame Inspection:** Periodically check all connections and fasteners to ensure they remain tight. Tighten if necessary.
- **Avoid Direct Sunlight:** Prolonged exposure to direct sunlight can cause fabric fading. Position your sofa away from direct sunlight or use window coverings.
- **Flammability Warning:** All foam and upholstered surfaces meet flammability standards. Keep away from open flames or high heat sources.

## 6. TROUBLESHOOTING

---

If you encounter any issues with your sofa, refer to the following common problems and solutions:

<b>Problem</b>	<b>Possible Cause</b>	<b>Solution</b>
Sofa sections do not connect smoothly.	Misaligned metal sliding pieces.	Ensure sections are perfectly straight when attempting to slide them together. Apply gentle, even pressure.
Armrest brackets are misaligned.	Factory installation variation.	Use the provided Allen wrench to adjust or re-position the armrest brackets as needed.
Pull-out bed mechanism is stiff or derails.	Uneven pulling or obstruction.	Pull the straps slowly and evenly on both sides. Check for any objects obstructing the wheels.
USB charging port not working.	Loose connection or faulty port.	Ensure the power cable for the charging station is securely connected. If the issue persists, contact customer support for a replacement.
Sofa feels less sturdy than expected.	Loose connections or structural damage.	Verify all assembly connections are tight. Avoid leaning heavily against the backrest. If structural damage is suspected, contact customer support.

## 7. SPECIFICATIONS

---

Feature	Detail
Brand	LINSY HOME
Model	Sleeper Sofa 1
Color	Beige
Product Dimensions (D x W x H)	55"D x 81"W x 34"H
Item Weight	140 Pounds
Weight Limit	660 Pounds
Seating Capacity	4
Seat Depth	22 inches
Seat Height	17 Inches
Arm Height	24 Inches
Arm Width	7 Inches
Leg Length	4 Inches
Material Type	Plush Corduroy
Frame Material	Wood and Metal
Fill Material	High Density Foam
Additional Features	Cup Holder, Pull Out Sofa, Side Pockets, USB Charging Ports

# Product Size & Weight Capacity

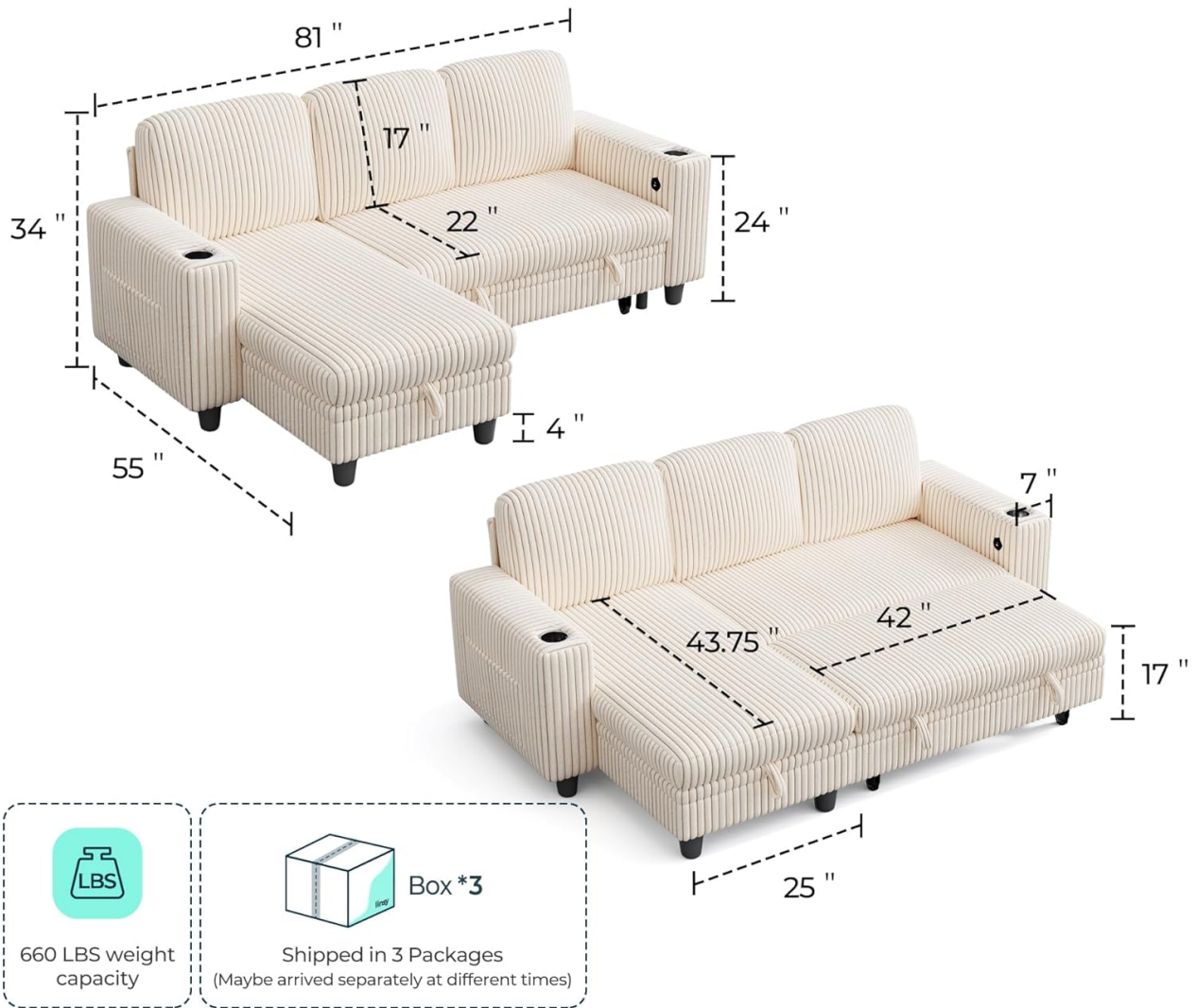


Image 7.1: Detailed product dimensions and weight capacity information for the sofa.

## 8. WARRANTY AND SUPPORT

### 8.1 Warranty Information

The LINSY HOME Sectional Sleeper Sofa comes with a Limited Warranty. For specific details regarding coverage and duration, please refer to the warranty documentation included with your product or contact LINSY HOME customer service.

### 8.2 Customer Support

For any questions, concerns, or assistance with your product, please contact LINSY HOME customer support. You can typically find contact information on the product packaging or through the seller's official channels.

**Seller:** LinsyHome Direct

Additional protection plans may be available for purchase, offering extended coverage beyond the standard warranty.

- **3-Year Protection Plan:** Available for one-time purchase.
- **Complete Protect:** A monthly plan covering eligible past and future purchases.

