

[manuals.plus](#) /

› [cudinham](#) /

› [cudinham Print Pods Mini Printer Instruction Manual](#)

cudinham Print Pods Mini Printer

cudinham Print Pods Mini Printer Instruction Manual

Model: Print Pods Mini Printer

Brand: cudinham

INTRODUCTION

This manual provides comprehensive instructions for the setup, operation, maintenance, and troubleshooting of your cudinham Print Pods Mini Printer. Please read this manual thoroughly before using the device to ensure proper functionality and longevity.



Image: The cudinhham Print Pods Mini Printer, a compact white device, is shown alongside its pink hard storage case and multiple rolls of thermal printing paper. The printer is actively printing a document, demonstrating its inkless thermal technology.

SETUP GUIDE

Follow these steps to set up your cudinhham Print Pods Mini Printer for first use.

1. **Charge the Printer:** Ensure the printer has sufficient battery charge. The built-in 1200mAh lithium-ion battery can be charged using the provided charging cable.
2. **Download the App:** Download the "Tiny Print" application from your smartphone's app store (available on App Store and Google Play).
3. **Turn On the Printer:** Press and hold the power button on the mini printer to turn it on.
4. **Connect via Bluetooth:** Open the "Tiny Print" app on your smartphone. Enable Bluetooth on your phone and follow the in-app instructions to connect to the printer. The app will guide you through the pairing process.
5. **Load Thermal Paper:** Open the paper compartment of the printer. Insert a roll of thermal printing paper, ensuring it is correctly aligned and the end of the paper extends slightly out of the compartment. The printer supports both

adhesive and non-adhesive thermal paper rolls.

HOW TO USE MINI PRINTER



Tiny print



01- Download "Tiny Print" APP
turn on the mini printer



02- Turn on Bluetooth of your phone
& connect to the printer



03- Load the thermal
paper into the printer



04- Use the APP & start printing!

Image: A visual guide illustrating the four key steps for using the mini printer: 1) Downloading the "Tiny Print" app, 2) Connecting via Bluetooth, 3) Loading thermal paper, and 4) Using the app to print. This image provides a clear sequence for initial setup and operation.

BLUETOOTH & APP CONNECTED

Tips: Please connect Bluetooth within the "Tiny Print" APP



Download on the
App Store



GET IT ON
Google Play



Bluetooth 4.0



Image: This image highlights the Bluetooth connectivity of the cudinhham mini printer, showing a smartphone screen with the "Tiny Print" app interface. It emphasizes the ease of connecting the printer to a mobile device via Bluetooth 4.0 for wireless printing.

OPERATING INSTRUCTIONS

Once set up, your cudinhham Print Pods Mini Printer is ready for use. The "Tiny Print" app offers various functionalities for printing.

- **App Features:** The "Tiny Print" app includes features such as free zoom and drag options, OCR functions (Optical Character Recognition), and a wide selection of templates for stickers, notes, and text.
- **Printing:** Select the desired content within the app (e.g., text, image, template). Adjust settings as needed, then initiate the print command from the app. The printer will use its thermal technology to produce the print without ink.
- **Versatile Use:** The printer is suitable for various applications, including creating labels, notes, photos, gift cards, shopping lists, and scrapbooking elements.



Image: A collage showcasing the diverse applications of the cudinhham mini printer. Examples include printing for scrapbooks, creating labels for jars, making handwritten notes, printing small photos, designing gift cards, and generating shopping lists, highlighting its versatility.

MAINTENANCE

Regular maintenance ensures optimal performance and extends the lifespan of your printer.

- **Cleaning the Laser Bar:** If print quality degrades or prints appear unclear after repeated use, the laser bar may need cleaning. Carefully open the paper loading compartment and use a cotton swab lightly dampened with alcohol to gently wipe the laser bar. Ensure the printer is off before cleaning.
- **Case Care:** The included hard storage case is designed to protect your printer from drops, scratches, impacts, and water splashes. Keep the case clean by wiping it with a soft, damp cloth. Avoid harsh chemicals.



Image: A cross-sectional diagram illustrating the multi-layered construction of the printer's storage case, emphasizing its shockproof and waterproof design. It shows the external PU layer for dustproofing, the middle EVA layer for waterproofing, and the internal velvet lining for shock absorption.

TROUBLESHOOTING

This section addresses common issues you might encounter with your cudinhham Print Pods Mini Printer.

Issue: Unclear or Faded Prints

Possible Cause: The thermal laser bar may be dirty or obstructed.

Solution: Refer to the "Cleaning the Laser Bar" instructions in the Maintenance section. Use alcohol to wipe the laser bar located in the paper loading compartment. Ensure the paper is loaded correctly and is thermal printing paper.

Issue: Printer Not Connecting via Bluetooth

Possible Cause: Bluetooth is not enabled on your smartphone, the printer is off, or the app is not correctly initiating the connection.

Solution:

- Ensure the printer is turned on and fully charged.
- Verify that Bluetooth is enabled on your smartphone.
- Close and reopen the "Tiny Print" app.
- Restart both your smartphone and the printer, then attempt to reconnect.

PRODUCT SPECIFICATIONS

Feature	Specification
Printing Technology	Thermal Inkless Printing
Resolution	200 DPI
Battery	1200mAh Lithium-ion (Rechargeable)
Connectivity	Bluetooth (via "Tiny Print" App)
Case Dimensions	6.7" x 4.72" x 3.15" (17cm x 12cm x 8cm)
Weight (Printer)	Approximately 180g (featherlight)
Included Paper	5 rolls adhesive printing paper, 5 rolls thermal printing paper
ASIN	B0F7R77X64
First Available Date	May 7, 2025

STORAGE BOX ONLY

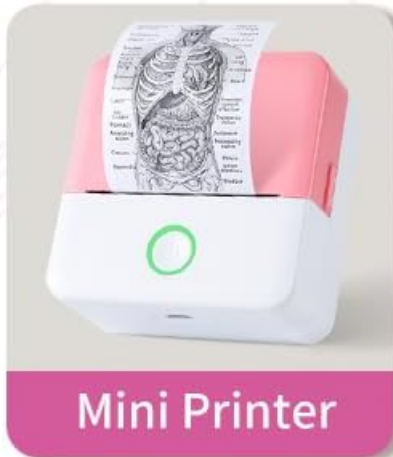


4.72"/12cm

3.15"/8cm

6.7"/17cm

Storage Example



Mini Printer



10 Rolls Paper



Charging Cable

Image: A detailed diagram illustrating the dimensions of the cudinhams storage box (17cm x 12cm x 8cm or 6.7" x 4.72" x 3.15"). It also shows the typical contents included: the mini printer, 10 rolls of paper, and a charging cable.

WARRANTY INFORMATION

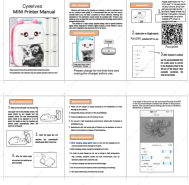
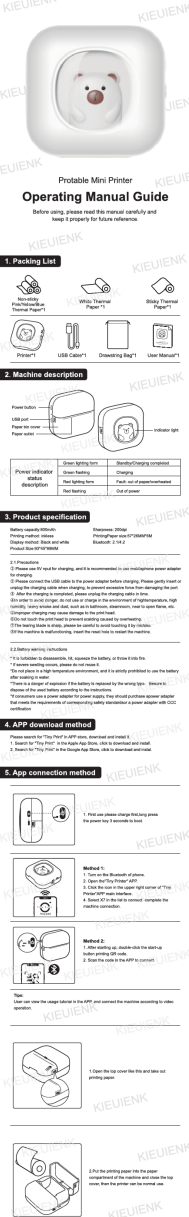
Specific warranty details for the cudinhams Print Pods Mini Printer are not provided in this manual. For information regarding warranty coverage, terms, and conditions, please refer to the product packaging, any included warranty cards, or contact cudinhams customer support directly.

CUSTOMER SUPPORT

If you require further assistance, have questions, or encounter issues not covered in this manual, please contact cudinhams customer support. You may find contact information on the product packaging or by visiting the official cudinhams store page on Amazon.

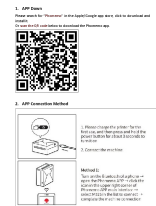
Online Support: [Visit the cudinhams Store on Amazon](#)

Related Documents - Print Pods Mini Printer

	<p>Cyeeelves MINI Printer User Manual: Setup, Usage, and Maintenance</p> <p>Comprehensive user manual for the Cyeeelves MINI Printer. Learn how to set up, download the Fun Print App, replace paper, charge the battery, and follow important usage guidelines for this portable Bluetooth thermal printer.</p>										
 <p>Operating Manual Guide</p> <p>Before using, please read this manual carefully and keep it properly for future reference.</p> <p>1. Packing List</p> <ul style="list-style-type: none">PrinterPower AdapterUSB CablePower AdapterPower AdapterPower Adapter <p>2. Machine description</p> <p>Power button USB port Power to use Power cable</p> <p>3. Product specification</p> <table><thead><tr><th>Item</th><th>Specification</th></tr></thead><tbody><tr><td>Model</td><td>KIEUIENK-001</td></tr><tr><td>Power Adapter</td><td>5V/1A</td></tr><tr><td>Power Adapter</td><td>5V/1A</td></tr><tr><td>Power Adapter</td><td>5V/1A</td></tr></tbody></table> <p>4. APP download method</p> <p>Please search for "Fun Print" in the App Store or Google Play Store.</p> <p>5. App connection method</p> <p>Method 1: Connect the printer to the phone via Bluetooth.</p> <p>Method 2: Connect the printer to the phone via USB.</p> <p>6. Warranty description</p> <p>100% satisfaction or money back guarantee.</p> <p>7. After-sales information</p> <p>Contact us: 1-800-123-4567</p> <p>8. Specific function operation guidelines</p>	Item	Specification	Model	KIEUIENK-001	Power Adapter	5V/1A	Power Adapter	5V/1A	Power Adapter	5V/1A	<p>KIEUIENK Portable Mini Printer Operating Manual Guide</p> <p>Comprehensive operating manual for the KIEUIENK Portable Mini Printer. This guide covers packing lists, machine description, specifications, precautions, app download and connection, paper loading, warranty, after-sales information, specific function guidelines, and troubleshooting common problems.</p>
Item	Specification										
Model	KIEUIENK-001										
Power Adapter	5V/1A										
Power Adapter	5V/1A										
Power Adapter	5V/1A										

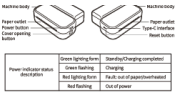
[illegible]

物料编码:8C1000011	
物料名称:C10 APP索引卡(英造)	
展开尺寸:170*400mm	
成品尺寸:170*100mm	
材质:128g哑粉纸	
印刷:双置四色印刷	
成型:露肉风琴折	
日期:2025.5.30	
版本:A1	



Comprehensive quick start guide for the Jaders C10 APP printer. Learn how to set up your printer, connect via Bluetooth, adjust paper width, select from various printing options including AI, DIY, and file printing, and print from social media. Details compatible paper sizes and types.

A comprehensive guide for the Phomemo M02S printer, covering app download, Bluetooth connection methods, and step-by-step instructions for replacing sticker paper.



- 1.1 Precautions
1. Please use the top for charging, and it is recommended to use mobile phone power adapter for charging.
 2. Please connect the USB cable to the power adapter before charging. Please gently insert or pull out the charging cable when charging, to prevent damage from being damaged by force.
 3. After the charging is completed, please unplug the charging cable in time.
 4. In order to prevent damage to the machine, please do not use a charger with a power output of more than 5V/1A, and it is recommended to use a charger with a power output of 5V/1A.
 5. Please do not use a charger with a power output of more than 5V/1A, and it is recommended to use a charger with a power output of 5V/1A.
 6. Please do not use a charger with a power output of more than 5V/1A, and it is recommended to use a charger with a power output of 5V/1A.
 7. Please do not use a charger with a power output of more than 5V/1A, and it is recommended to use a charger with a power output of 5V/1A.
 8. Please do not use a charger with a power output of more than 5V/1A, and it is recommended to use a charger with a power output of 5V/1A.
 9. Please do not use a charger with a power output of more than 5V/1A, and it is recommended to use a charger with a power output of 5V/1A.
 10. Please do not use a charger with a power output of more than 5V/1A, and it is recommended to use a charger with a power output of 5V/1A.

- 1.2 Safety warning
1. It is forbidden to disassemble, fix, replace the battery, or throw it into fire.
 2. Please do not use the machine in a high-temperature environment, and it is strictly prohibited to use it in a high-temperature environment.
 3. There is a danger of explosion if the battery is incorrectly inserted. Be sure to insert the battery in the correct direction.
 4. Please do not use a power adapter for power supply. If you must use a power adapter, please use the power adapter of the manufacturer's specification.
 5. Please do not use a power adapter for power supply. If you must use a power adapter, please use the power adapter of the manufacturer's specification.

03. APP download method
- Please search for "Phomemo" in APP store, download and install it.
1. Search for Phomemo in the Apple App Store, click to download and install.
 2. Search for Phomemo in the Google Play Store, click to download and install.

04. App connection method

Method 1: Turn on the Bluetooth of a phone → open the Phomemo app → click the "Connect" button → scan the QR code → complete the machine connection.

Method 2: After starting up, double-click the start-up button printing QR code → scan the QR code of the Phomemo app to connect.

*Tips: You can view the usage tutorial in the APP, and connect the machine according to video operation.

05. How to replace the printing paper

1. Separate machine body and paper compartment manually, and open the paper compartment cover at the paper inlet.
2. Take out the consumable roller, load new consumable and put it in the paper compartment.
3. Adjust the left and right sides, straighten the printing paper and close the paper compartment (the printing side of the paper should be facing up).
4. Open machine case, connect the paper compartment to machine body, straighten the printing paper in the paper inlet, and close the machine case to complete.

*Tips: How to distinguish the front and back of printing paper

1. Take out a printing paper and use your nails to scratch the paper from the back, and it will be smooth with the side up.
2. Please make sure that the smooth surface is facing up and aligned with the printing port.

06. Warranty description

Warranty: 12 months (excluding the consumable roller and quality inspection, accessories may not be returned during transportation, resulting in damage to the machine. If there is any problem with the printer, please contact us for repair or replacement. We have a quick response after sales service to solve the problem professionally.

*The warranty is valid for the printer body and consumable roller. The warranty is not valid for the consumable roller. The warranty is not valid for the consumable roller. The warranty is not valid for the consumable roller.

07. After-sales information

Customer service information

Hotline: +86 13800000000 (9:00-18:00)

After-sales service: Please contact the after-sales service team for more information.

Customer service phone number: +86 800 1234567 (only for customers in China)

Service area: Mainland China (excluding Hong Kong, Macao, and Taiwan)

Head office: www.phomemo.com

Official website: www.phomemo.com

*Note: Please search for "Phomemo" in the APP to get the printer operation guide.

08. Warranty card

☐ Return ☐ Exchange ☐ Repair

Serial No.	Model	Serial No.	Phone
Address			
Purchaser name			
Purchase date			
Product order number			
Product serial number			
Reason description			
Failure conditions			
Maintenance person			
Handling location			
Delivery date			
Maintenance order number			
Delivery date			

Product certification

Inspection	Delivery date
------------	---------------

09. Phomemo official printing paper type

1. The product is made of paper. The paper is made of 100% recycled paper. The paper is made of 100% recycled paper.
2. The paper is made of 100% recycled paper. The paper is made of 100% recycled paper.
3. The paper is made of 100% recycled paper. The paper is made of 100% recycled paper.
4. The paper is made of 100% recycled paper. The paper is made of 100% recycled paper.
5. The paper is made of 100% recycled paper. The paper is made of 100% recycled paper.
6. The paper is made of 100% recycled paper. The paper is made of 100% recycled paper.
7. The paper is made of 100% recycled paper. The paper is made of 100% recycled paper.
8. The paper is made of 100% recycled paper. The paper is made of 100% recycled paper.
9. The paper is made of 100% recycled paper. The paper is made of 100% recycled paper.
10. The paper is made of 100% recycled paper. The paper is made of 100% recycled paper.

10. Specific function operation guidelines

10.1 First-time operation guidelines

Steps:

1. Select the "First-time" function in the Phomemo APP.
2. Select the printer you want to use.
3. Select the printer you want to use.
4. Select the printer you want to use.
5. Select the printer you want to use.
6. Select the printer you want to use.
7. Select the printer you want to use.
8. Select the printer you want to use.
9. Select the printer you want to use.
10. Select the printer you want to use.

10.2 Specific operation guidelines

There are a large number of printed original materials in the material library. Please select the material you want to print according to the function. The operation steps are as follows:

1. Select the material you want to print.
2. Select the material you want to print.
3. Select the material you want to print.
4. Select the material you want to print.
5. Select the material you want to print.
6. Select the material you want to print.
7. Select the material you want to print.
8. Select the material you want to print.
9. Select the material you want to print.
10. Select the material you want to print.

11. Common problems and solutions

Problem	Reason	Solution
1. The printer is not working.	1. The printer is not connected to the power source.	1. Check the power source.
2. The printer is not printing.	2. The printer is not connected to the paper.	2. Check the paper.
3. The printer is not printing.	3. The printer is not connected to the paper.	3. Check the paper.
4. The printer is not printing.	4. The printer is not connected to the paper.	4. Check the paper.
5. The printer is not printing.	5. The printer is not connected to the paper.	5. Check the paper.
6. The printer is not printing.	6. The printer is not connected to the paper.	6. Check the paper.
7. The printer is not printing.	7. The printer is not connected to the paper.	7. Check the paper.
8. The printer is not printing.	8. The printer is not connected to the paper.	8. Check the paper.
9. The printer is not printing.	9. The printer is not connected to the paper.	9. Check the paper.
10. The printer is not printing.	10. The printer is not connected to the paper.	10. Check the paper.

[illegible]