



[Manuals.plus](#) /

› [LASERTAIL](#) /

› LASERTAIL 12.1 Inch Android 13 Car Stereo for Ford Explorer (2011-2019) User Manual

## LASERTAIL 4+64G

# LASERTAIL 12.1 Inch Android 13 Car Stereo for Ford Explorer (2011-2019) User Manual

Model: 4+64G

## 1. INTRODUCTION

---

This manual provides detailed instructions for the installation, operation, and maintenance of your LASERTAIL 12.1 Inch Android 13 Car Stereo. Designed specifically for Ford Explorer models from 2011 to 2019, this head unit offers a significant upgrade to your vehicle's infotainment system with its large vertical touchscreen, advanced features, and seamless integration.

The system features an Android 13 operating system, an 8-core processor, 4GB DDR4 RAM, and 64GB ROM, ensuring smooth performance and ample storage. Enjoy wireless CarPlay and Android Auto, GPS navigation, 5Ghz WiFi, Bluetooth 5.0, DSP with 48 EQ, mirror link, split screen functionality, and a high-definition backup camera.

## 2. SAFETY INFORMATION

---

Please read all instructions carefully before installation and use. Improper installation or operation may cause damage to the device or vehicle, and could lead to injury. Always ensure the vehicle is turned off and the battery is disconnected before performing any installation or wiring procedures. If you are unsure about any step, seek professional assistance.

- **Professional Installation Recommended:** Due to the complexity of car electronics, professional installation is highly recommended.
- **Vehicle Compatibility:** Ensure the product is compatible with your specific Ford Explorer model (2011-2019).
- **Wiring:** Double-check all wiring connections to prevent short circuits or damage.
- **AC Control:** Verify AC control functionality after installation and adjust settings as needed.

## 3. PACKAGE CONTENTS

---

Your LASERTAIL 12.1 Inch Android 13 Car Stereo package includes the following items:

- Car radio (1)
- Installation kit (1)

- 1080P backup camera (1)
- Installation instruction (1)
- Function instruction (1)



Image: Detailed view of all components included in the LASERTAIL 12.1 Inch Android Car Stereo package, including the main unit, wiring harnesses, GPS antenna, USB cables, backup camera, and installation tools.

## 4. SETUP & INSTALLATION

Installation involves removing the original radio unit and connecting the new head unit with the provided wiring harnesses. Some car models may require minor modifications, such as cutting two clips on the top of the product and using backup clips for proper installation.

### Wiring Connections

Refer to the detailed wiring diagram and video tutorials for precise connections. Ensure all connectors are securely plugged in to avoid functional issues.

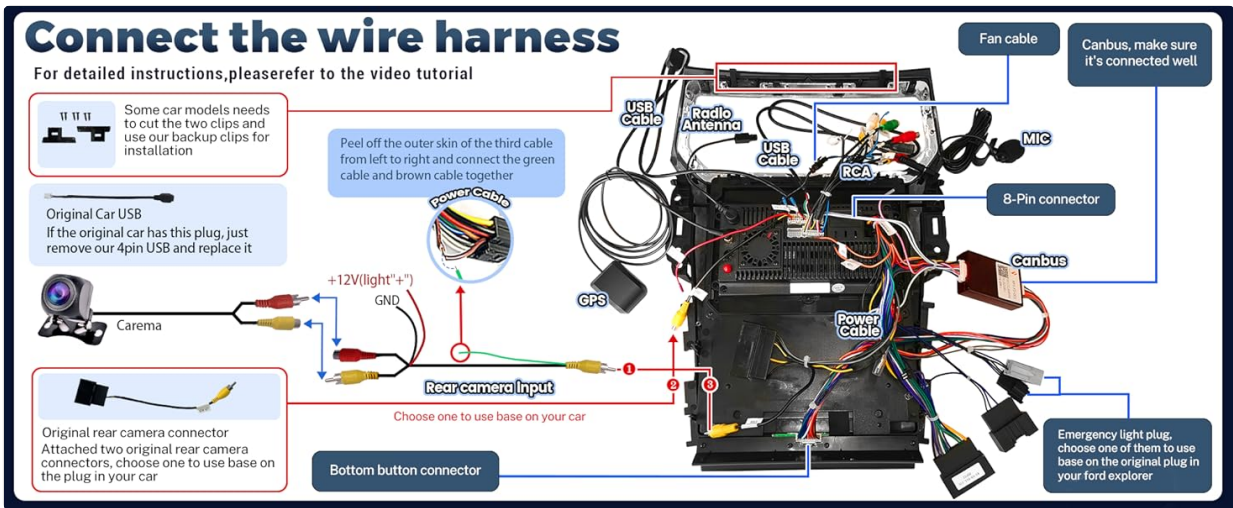


Image: A comprehensive wiring diagram illustrating how to connect the power cable, Canbus, USB cables, radio antenna, GPS, RCA cables, fan cable, and microphone to the main head unit.

Video: This video demonstrates the wire harness connection process for the Ford Explorer radio, showing how to properly connect the power cable, Canbus, and other essential wiring components.

## Backup Camera Connection

The included 1080P backup camera provides high-definition reversing images. Connect the camera cable to the rear camera input on the head unit. If using the original factory camera, ensure the correct connector is used.

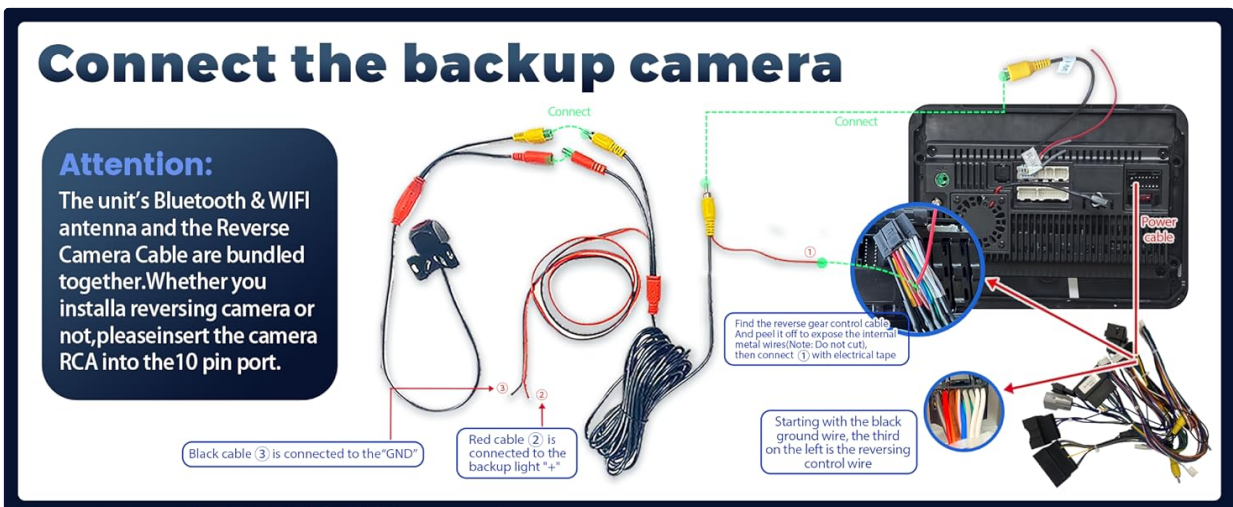


Image: A detailed diagram showing the connections for the backup camera, including the camera cable, reverse line, and power connections. It highlights the importance of connecting the camera RCA into the 10-pin port.

Video: This video provides a step-by-step guide on connecting the backup camera to the head unit, ensuring proper wiring for functionality.

## 5. OPERATING INSTRUCTIONS

Your new LASERTAIL car stereo offers a wide range of features to enhance your driving experience. Below are instructions for key functionalities.

### Wireless CarPlay and Android Auto

Connect your smartphone wirelessly to access navigation, music, messages, and calls via Siri or Google Voice control. This feature provides a seamless and safe way to use your phone's essential functions while driving.

# Wireless Carplay Android Auto

GPS Navigation/Phone Calls/Music/Messages/News



Image: The head unit display showing the Wireless CarPlay and Android Auto interface, highlighting GPS navigation, phone calls, music, messages, and news features.

Video: A step-by-step guide on how to connect wireless CarPlay to your LASERTAIL head unit, including Bluetooth pairing and activating CarPlay.

Video: This video demonstrates the process of connecting wireless Android Auto to the head unit, showing the necessary steps for successful pairing and activation.

## GPS Navigation

The built-in GPS module supports both online and offline map navigation, allowing you to plan and execute your trips efficiently. Download your preferred navigation apps from the Google Play Store.



Image: The head unit displaying GPS navigation with online and offline map options, showing a car driving on a road with map details.

### Steering Wheel Control (SWC)

Retain your original steering wheel controls for easy access to music, volume, and call functions, ensuring a safer driving experience.



Image: The head unit displaying the steering wheel control interface, showing various buttons for volume, track control, and call management, with an inset of a Ford Explorer steering wheel.

## 5Ghz WiFi & Bluetooth 5.0

Connect to 5Ghz WiFi for high-speed app downloads and streaming. Bluetooth 5.0 enables stable and clear hands-free calls, enhancing safety on the road.



Image: The head unit displaying various app icons, illustrating the capability of 5Ghz WiFi connection for downloading and using applications like Waze, YouTube, and Facebook.



Image: A driver making a hands-free call using the Bluetooth 5.0 feature of the head unit, with the screen showing phone book and music playing options.

## DSP with 48 EQ

Customize your audio experience with the Digital Signal Processor (DSP) featuring 48 EQ bands, 8 sound effects, and bass boost. The professional-grade TDA7851 amplifier chip ensures high-quality sound output.

## Digital Signal Processor

- DSP and up to 48 Bands EQ
- 8 sound effects and sound field adjustment
- DIY your favorite sound effect and enjoy your space



Image: The head unit displaying the 48-band Equalizer (EQ) and DSP settings, allowing users to fine-tune sound effects, bass boost, and sound field adjustments for an optimized audio experience.

## Mirror Link & Split Screen

Synchronize your phone screen to the head unit for easy viewing with Mirror Link. The split screen function allows you to run two applications side-by-side, enhancing multitasking capabilities.



Image: The head unit displaying two applications simultaneously in split-screen mode, demonstrating the ability to view navigation and media content side-by-side.

## AM/FM/RDS Radio

Enjoy your favorite radio stations with the built-in AM/FM/RDS radio tuner, keeping you updated with the latest news and entertainment.



# AM/FM/RDS Radio

Selects your favourite radio station and get the latest news



Image: The head unit displaying the AM/FM/RDS radio interface, showing frequency tuning and station presets, with a background of a person enjoying music in a car.

## 1080P Backup Camera

The included HD waterproof 1080P backup camera features night vision and a 170° wide-angle lens, providing clear reversing images and lines for safe parking and maneuvering.



Image: The head unit displaying a clear 1080P backup camera view with parking assistance lines, showing a car reversing in a parking garage.

## Air Conditioning Control

The unit retains original AC control functionality. Ensure the agreement selection is consistent with the manual for proper AC operation. AC type and mode settings can be adjusted in the Car Settings menu.

Video: This video demonstrates the function display for the 12.1 inch Ford Explorer radio, including how to access and control the air conditioning settings directly from the touchscreen.

## 6. COMMON SETTINGS

Access the 'Car Settings' menu to configure various aspects of your head unit.

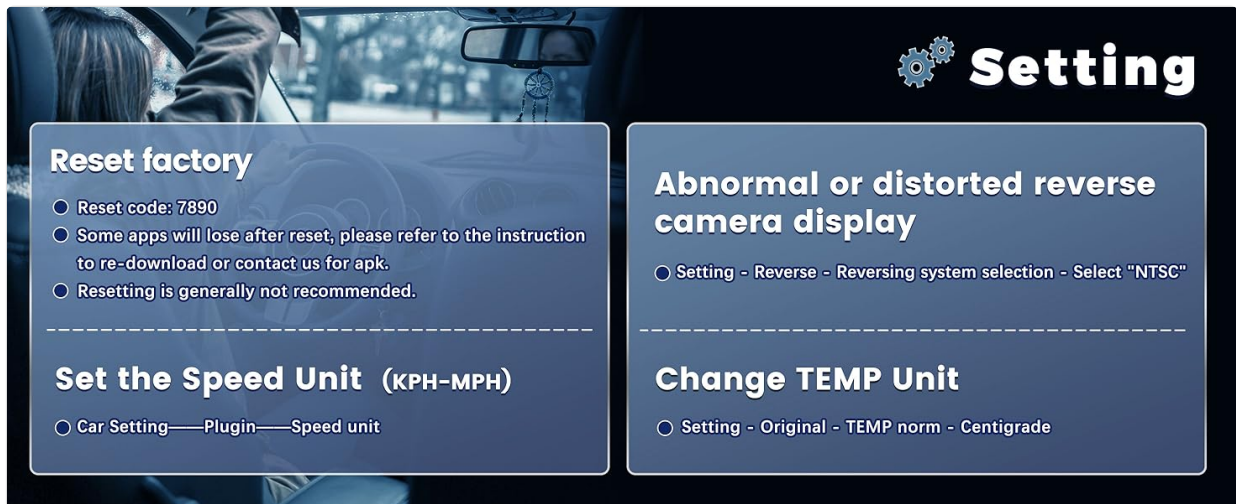


Image: The settings interface of the head unit, showing options for various configurations including Canbus, AC type, reversing system, and temperature units.

Video: This video demonstrates various settings for the Ford Explorer Radio 2011-2019 12.1 Inch Screen, including Canbus, AC type, AC mode, reversing system, split screen, speed unit, temperature norm, and steering wheel control learning.

## Canbus Settings

Navigate to