



[Manuals.plus](#) /

› [ExploreHorizon](#) /

› ExploreHorizon 14000 BTU Portable Air Conditioner User Manual

## ExploreHorizon 01

# ExploreHorizon 14000 BTU Portable Air Conditioner User Manual

Model: 01

## 1. INTRODUCTION

---

Thank you for choosing the ExploreHorizon 14000 BTU Portable Air Conditioner. This manual provides important information regarding the safe operation, installation, maintenance, and troubleshooting of your appliance. Please read it thoroughly before use and retain it for future reference.

This portable air conditioner is designed to provide cooling, fan, and dehumidification functions for indoor spaces up to 700 square feet, ensuring a comfortable environment.

## 2. SAFETY INFORMATION

---

### Important Safety Instructions:

- Read all instructions before using this appliance.
- This appliance is for indoor use only.
- Ensure the power supply matches the voltage specified on the rating label.
- Do not operate the unit with a damaged cord or plug.
- Always unplug the unit before cleaning or servicing.
- Keep the unit on a flat, stable surface to prevent tipping.
- Do not block air inlets or outlets.
- Do not insert objects into the air vents.
- Keep children and pets away from the unit during operation.

## 3. PACKAGE CONTENTS

---

Verify that all components are present and in good condition upon unpacking.

- Portable Air Conditioner Unit
- Remote Control
- Exhaust Hose
- Hose Connector (for unit)
- Window Adapter (for hose)
- Adjustable Window Kit
- Drain Hose



Figure 3.1: Included Components

## 4. PRODUCT FEATURES

---

- **3-in-1 Functionality:** Operates as an Air Conditioner, Fan, and Dehumidifier.
- **Powerful Cooling:** 14000 BTU cooling capacity, suitable for areas up to 700 sq ft.
- **Low Noise Operation:** Designed for quiet performance, especially in Sleep Mode (below 50 dB).
- **Remote Control:** Conveniently adjust settings from across the room.
- **Sleep Mode:** Automatically adjusts temperature for optimal comfort during sleep.
- **24-Hour Timer:** Program the unit to turn on or off automatically.
- **Built-in Dehumidifier:** Removes up to 75 pints of moisture per day.
- **Reusable & Washable Filter:** Easy to clean for consistent performance.
- **Portability:** Equipped with hidden side handles and 360-degree castors for easy movement.

# 3-in-1 Portable Air Conditioner

AC / Fan / Dehumidifier



Figure 4.1: 3-in-1 Functionality Overview

# Cools up to 700 SQ FT

14000 BTU Cooling Power  
59°F at the coolest setting



Figure 4.2: Cooling Coverage and Power

# Low Noise & Sleep Mode

Enjoy your silent sleep time



Sleep Mode



24H Timer



Auto Shut Off



10dB

35dB

≤ 50dB

65dB

85dB

Figure 4.3: Low Noise and Sleep Mode

## Built-In Powerful Dehumidifier



75Pints/day

Figure 4.4: Built-in Dehumidifier



Figure 4.5: Hidden Side Handle and Castors

## 5. SETUP AND INSTALLATION

---

Proper installation is crucial for the efficient operation of your portable air conditioner. This unit requires an exhaust hose to vent hot air outside.

### 5.1 Choosing a Location

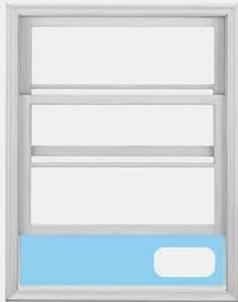
- Place the unit on a flat, stable surface near a window.
- Ensure there is at least 20 inches (50 cm) of space around the unit for proper airflow.
- The unit should be within reach of a grounded electrical outlet.

### 5.2 Window Kit Installation

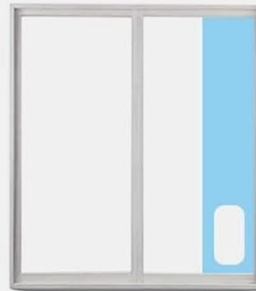
The included window kit is designed for most standard double-hung/single-hung windows and sliding slash windows.

1. Connect the hose connector to one end of the exhaust hose by twisting it clockwise until secure.
2. Connect the window adapter to the other end of the exhaust hose.
3. Extend the adjustable window kit to the length of your window opening. Secure it in place.
4. Attach the hose connector (with hose) to the exhaust air outlet on the back of the unit.
5. Insert the window adapter end of the exhaust hose into the opening of the window kit.
6. Plug in the power cord, turn on the air conditioner, adjust the mode, and begin operation.

# Flexible Installation



✓  
**Double/  
Single-hung  
Window**



✓  
**Sliding Slash  
Window**

Figure 5.1: Flexible Window Installation Options

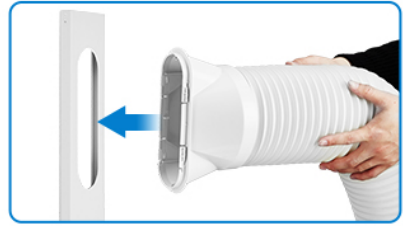
## Easy to Install



**Step 1:** Connect the hose connector to one end of the exhaust hose.



**Step 2:** Connect the window kit adapter to the other end of the exhaust hose.



**Step 3:** Extend the adjustable window kit to the length of your window.



**Step 4:** Attach the hose connector to the exhaust air outlet of the unit.



**Step 5:** Extend the exhaust hose and insert it into the window kit.



**Step 6:** Plug in power, turn on the air conditioner, adjust the mode, and you can start enjoying the summer.

Figure 5.2: Step-by-Step Installation Guide

## 6. OPERATION

---

Your portable air conditioner can be operated using the control panel on the unit or the included remote control.

### 6.1 Control Panel

The control panel features buttons for Power, Mode, Fan Speed, Timer, and Temperature Adjustment.

### 6.2 Remote Control

The remote control allows you to conveniently adjust all settings from a distance of up to 23 feet.

# CONVENIENT REMOTE CONTROL

You can set time, modes, temperature and fan speeds more easily

Adjusts the temperature to the LCD Remote Control location



Figure 6.1: Convenient Remote Control Operation



Figure 6.2: Remote Control Range

## 6.3 Operating Modes

- **Cool Mode:** Provides powerful cooling. Set your desired temperature.
- **Fan Mode:** Circulates air without cooling. Choose from low, medium, or high fan speeds.

- **Dehumidify Mode:** Removes excess moisture from the air.
- **Sleep Mode:** Activates low noise operation and gradually adjusts the temperature for comfortable sleep.



Figure 6.3: 3-in-1 Functionality in Use

## 7. MAINTENANCE

---

Regular maintenance ensures optimal performance and extends the lifespan of your air conditioner.

### 7.1 Cleaning the Air Filter

The air filter should be cleaned every two weeks or more frequently depending on usage and air quality.

1. Unplug the air conditioner from the power outlet.
2. Locate and remove the air filter from the back or side of the unit.
3. Wash the filter under running water (warm, soapy water if heavily soiled).
4. Allow the filter to air dry completely before reinstalling. Do not expose to direct sunlight.
5. Reinstall the dry filter into the unit.



## 7.2 Cleaning the Unit Exterior

Wipe the exterior of the unit with a soft, damp cloth. Do not use harsh chemicals or abrasive cleaners.

## 7.3 Draining Water

The unit will accumulate condensate during operation, especially in dehumidifier mode. When the internal water tank is full, the unit may stop operating and display an indicator. Drain the water using the provided drain hose.

## 8. TROUBLESHOOTING

Before contacting customer support, please refer to the following troubleshooting guide for common issues.

Problem	Possible Cause	Solution
Unit does not turn on	No power; Power cord unplugged; Full water tank	Check power outlet; Plug in power cord securely; Drain water tank
Unit is not cooling effectively	Air filter dirty; Room too large; Exhaust hose not properly installed; Doors/windows open	Clean air filter; Ensure room size is within capacity; Check exhaust hose connection; Close all doors and windows
Unit is noisy	Unit not on a level surface; Obstruction in fan; Filter dirty	Place on a flat surface; Check for obstructions; Clean air filter
Water leakage	Drain plug loose; Unit tilted; Drain hose blocked	Ensure drain plug is secure; Place unit on level surface; Clear drain hose

## 9. SPECIFICATIONS

Specification	Value
Brand	ExploreHorizon
Model Name	HM2CESAWK8
Item Model Number	01
Cooling Power	14000 British Thermal Units (BTU)
Coverage Area	Up to 700 sq ft
Moisture Removal Capacity	75 Pints/Day
Noise Level	52 Decibels (Normal Operation), <50 Decibels (Sleep Mode)
Voltage	115V
Product Dimensions (D x W x H)	18.5" x 15.35" x 35.24" (47cm x 39cm x 89.5cm)

Specification	Value
Item Weight	76 Pounds (34.5 kg)
Color	White
Special Feature	4 Way Swing
Included Components	Remote Control

## 10. WARRANTY AND SUPPORT

---

**Warranty Information:** No explicit warranty information is provided in the product data. Please refer to your purchase documentation or contact the retailer for specific warranty details.

**Customer Support:** For any questions, technical assistance, or service inquiries, please contact the retailer or manufacturer directly using the contact information provided at the time of purchase.