

[Manuals.plus](#) /

> [TCL](#) /

> TCL PREMIUM 4K QD-Mini LED TV 75C6K GOOGLE TV DOLBY VISION IQ User Manual

TCL 75C6K

TCL PREMIUM 4K QD-Mini LED TV 75" C6K User Manual

Model: 75C6K

PRODUCT OVERVIEW

The TCL PREMIUM 4K QD-Mini LED TV 75" C6K is a state-of-the-art television featuring Google TV, Dolby Vision IQ, and ATMOS. It includes a built-in subwoofer, HDR10+, dual-band Wi-Fi, Bluetooth, 144Hz VRR, and HDMI 2.1 connectivity. This model supports distance voice command with Google Assistant, ALLM, and boasts a borderless design for an immersive viewing experience.

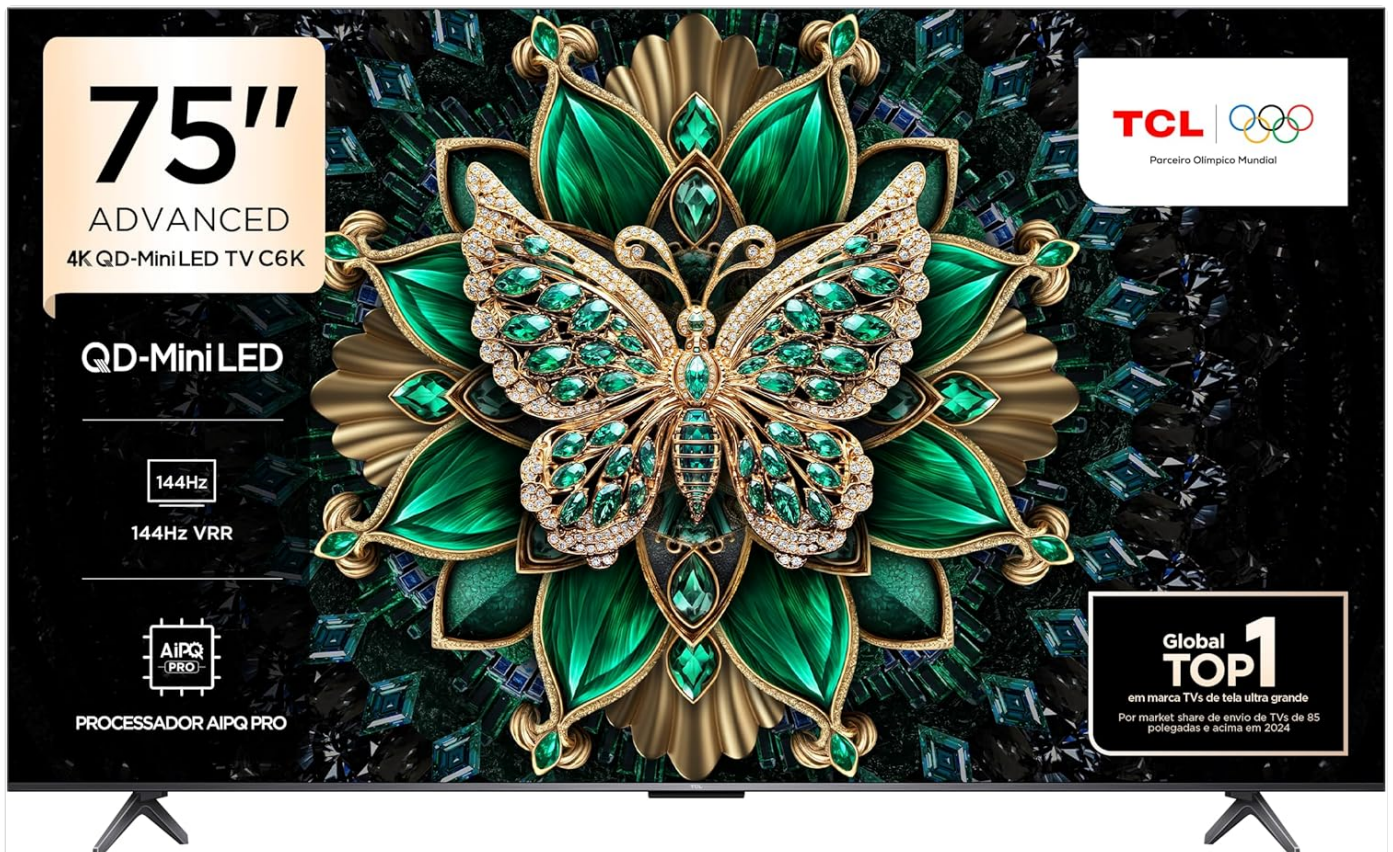


Image: Front view of the TCL 75" C6K QD-Mini LED TV, showcasing its slim design and vibrant display.

SETUP GUIDE

1. Unpacking and Placement

Carefully remove the TV and all accessories from the packaging. It is recommended to have at least two people for handling the 75-inch model due to its size and weight. Ensure the TV is placed on a stable, level surface or securely mounted to a wall.

TCL

Onde a inovação te encontra

4K

QD-Mini LED

Tela HVA e Matte HVA

PROCESSADOR AIPQ PRO

144Hz VRR

Design sem borda

ONKYO

Dolby VISION · ATMOS

dts X

with **Google Assistant**

120Hz Game Accelerator

Image: A diagram illustrating recommended viewing distances for various TV sizes, including the 75-inch model at approximately 2.3 meters for optimal experience.

For the 75" C6K TV, an ideal viewing distance is approximately 2.3 meters (7.5 feet) to fully appreciate the 4K resolution.

2. Connecting Devices

Identify the various input and output ports on your TV. Connect your external devices such as gaming consoles, Blu-ray players, sound systems, and cable/satellite boxes to the appropriate ports.

TCL



Image: Side view of the TCL C6K TV displaying its connectivity panel, including USB, LAN, HDMI, Antenna/Cable IN, and Optical Audio Out ports.

- **USB 3.0 / USB 2.0:** For connecting USB storage devices.
- **LAN:** For wired internet connection.
- **HDMI 1 (eARC), HDMI 2 (Service port), HDMI 3, HDMI 4:** For connecting high-definition devices. HDMI 1 supports eARC for enhanced audio return channel.
- **Antenna / Cable IN:** For connecting an antenna or cable TV signal.
- **AUDIO OUT (OPTICAL):** For connecting to external audio systems via optical cable.

3. Power Connection

Once all devices are connected, plug the TV's power cord into a wall outlet. Press the power button on the TV or the remote control to turn on the TV.

4. Initial Setup (Google TV)

Upon first power-on, the TV will guide you through the initial setup process for Google TV. This includes:

- Language selection.
- Connecting to your Wi-Fi network (dual-band Wi-Fi supported).
- Signing in with your Google account to access Google TV features, apps, and Google Assistant.
- Scanning for available TV channels (if using an antenna/cable).

OPERATING INSTRUCTIONS

1. Basic Operations

- **Power On/Off:** Use the power button on the remote control or the TV.
- **Input Selection:** Press the "Input" or "Source" button on the remote to switch between connected devices (HDMI, USB, TV).
- **Volume Control:** Use the volume up/down buttons on the remote.
- **Channel Navigation:** Use the channel up/down buttons for broadcast TV.

2. Smart TV Features (Google TV)

Your TCL C6K TV runs on Google TV, providing a personalized and intuitive smart TV experience.

TCL



 Google TV

Sua TV agora está mais útil do que nunca

 Hey Google

 Google Meet

 Google Photos

 Chromecast
built-in

 Google Play

 kid's Profile

Image: A user interacting with the Google TV interface on the TCL C6K, showing various streaming apps and content recommendations.

- **Google Assistant:** Use voice commands via the remote control or distance voice command to search for content, control smart home devices, and get information.
- **Chromecast built-in:** Cast content directly from your smartphone, tablet, or computer to the TV.
- **App Access:** Download and stream from popular services like YouTube, Prime Video, Disney+, Apple TV, Spotify, and more from the Google Play Store.
- **Google Meet & Photos:** Utilize integrated Google services for video calls and photo viewing.

3. Picture and Display Settings

The TCL C6K features advanced display technologies for superior image quality.

TCL



PROCESSADOR AIPQ PRO

Ele percebe, ele pensa, ele produz

O processador AiPQ Pro, desenvolvido pela TCL, incorpora diversos algoritmos exclusivos de ajuste de qualidade de imagem da marca.



Ai Clarity



Ai Color



Ai HDR



Ai Contrast



Ai Motion

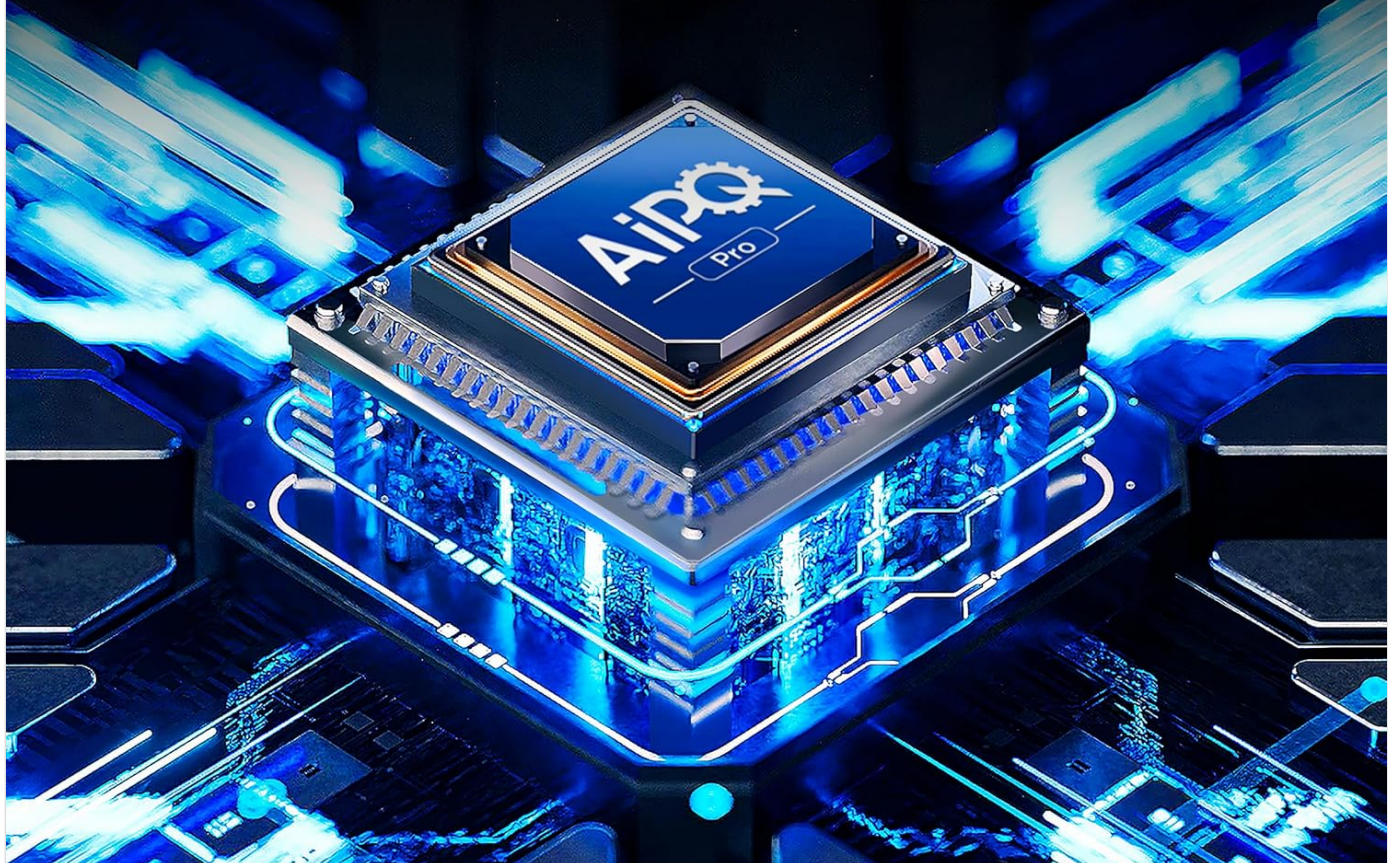


Image: A visual summary of the TCL C6K's key features, highlighting its 4K resolution, QD-Mini LED technology, and various performance enhancements.

- **4K QD-Mini LED:** Experience stunning clarity, vibrant colors, and deep blacks with Quantum Dot and Mini LED technology.
- **Dolby Vision IQ & HDR10+:** Enjoy enhanced contrast, brightness, and color detail in compatible content. Dolby Vision IQ intelligently optimizes picture quality based on room lighting.
- **AiPQ Pro Processor:** This intelligent processor enhances image quality through AI-driven algorithms for clarity, color, HDR, contrast, and motion.

TCL

Definindo o padrão para o home theater

Eleve sua experiência de home theater com uma excelência sonora incomparável.

 Dolby Atmos

 DTS X

 ONKYO 2.1 Hi-Fi System



Image: A detailed graphic of the AiPQ Pro processor, illustrating its capabilities in AI Clarity, AI Color, AI HDR, AI Contrast, and AI Motion for optimized picture performance.

- **144Hz VRR & 120Hz Game Accelerator:** For gamers, Variable Refresh Rate (VRR) up to 144Hz (or emulated 288Hz) and the 120Hz Game Accelerator ensure smooth, tear-free gameplay with low input lag (ALLM).

4. Audio Settings

The TCL C6K delivers powerful and immersive audio.

TCL

Jogue como um profissional

Desbloqueie o máximo desempenho com tecnologia avançada de imagem e áudio para jogos mais fluidos e imersivos.

144Hz

144Hz VRR



Game Master



120Hz Game Accelerator



Image: A visual representation of the immersive audio experience provided by the TCL C6K's ONKYO 2.1 Hi-Fi System, with sound waves emanating from the TV.

- **Dolby Atmos:** Experience multi-dimensional sound that moves around you, creating a truly cinematic audio experience.
- **DTS:X:** Enjoy virtualized 3D audio that places you in the center of the action.
- **ONKYO 2.1 Hi-Fi System with Subwoofer:** Integrated ONKYO speakers and a dedicated subwoofer provide rich, powerful, and clear sound with enhanced bass.

MAINTENANCE

- **Screen Cleaning:** Gently wipe the screen with a soft, lint-free cloth. For stubborn marks, use a screen-specific cleaning solution applied to the cloth, not directly to the screen.
- **TV Body Cleaning:** Use a soft, dry cloth to clean the TV's frame and back. Avoid abrasive cleaners or solvents.
- **Software Updates:** Ensure your TV is connected to the internet to receive automatic software updates. These updates improve performance, add new features, and enhance security. You can also manually check for updates in the TV's settings menu.

TROUBLESHOOTING

Problem	Possible Cause / Solution
No Power	Ensure the power cord is securely plugged into the TV and the wall outlet. Check if the wall outlet is working by plugging in another device. Try a different power outlet.
No Picture / Black Screen	Verify the correct input source is selected (e.g., HDMI 1, TV). Check all cable connections between the TV and external devices. Restart the TV and connected devices.
No Sound	Check the volume level and ensure the TV is not muted. Verify audio cables are correctly connected. If using external speakers, ensure they are powered on and correctly configured. Check audio output settings in the TV menu.
Wi-Fi Connection Issues	Ensure your Wi-Fi router is on and working. Restart your router and modem. Check Wi-Fi settings on the TV and re-enter the password if necessary. Move the TV closer to the router or consider a wired LAN connection.
Remote Control Not Working	Replace the batteries in the remote control. Ensure there are no obstructions between the remote and the TV's IR sensor. If it's a Bluetooth remote, ensure it's paired correctly.

SPECIFICATIONS

Feature	Detail
Brand	TCL
Model	75C6K
Screen Size	75 inches
Display Technology	QD-Mini LED, VA Panel
Resolution	4K (3840 x 2160)
Refresh Rate	120 Hz (Native), 144Hz VRR, 288Hz VRR (Emulated)
Operating System	Google TV, Android
HDR Support	Dolby Vision IQ, HDR10+
Processor	AiPQ Pro Processor
Audio System	Dolby Atmos, DTS:X, ONKYO 2.1 Hi-Fi System with Subwoofer
Connectivity	Dual-band Wi-Fi, Bluetooth, HDMI 2.1, USB 3.0, USB 2.0, LAN, Optical Audio Out, Antenna/Cable IN

Feature	Detail
Dimensions (Product)	6.5 x 167 x 95.9 cm (Depth x Width x Height)
Weight (Product)	33.2 kg
Included Components	01 Televisor 75", 01 Remote Control, 1 P2/RCA Adapter Cable

WARRANTY INFORMATION

This TCL 75C6K TV comes with a 1-year manufacturer's warranty from the date of purchase, covering defects in materials and workmanship. Please retain your proof of purchase for warranty claims. For detailed warranty terms and conditions, refer to the warranty card included with your product or visit the official TCL support website.

CUSTOMER SUPPORT

For further assistance, technical support, or service inquiries, please visit the official TCL website or contact TCL customer service. You can find contact information and frequently asked questions on the [TCL Brand Store on Amazon](#) or the TCL global support portal.