

[Manuals.plus](#) /

› [Lenovo](#) /

› [Lenovo IdeaPad 15.6" FHD Touchscreen Laptop User Manual](#)

## Lenovo Lenovo IdeaPad 3

# Lenovo IdeaPad 15.6" FHD Touchscreen Laptop User Manual

Model: Lenovo IdeaPad 3

## INTRODUCTION

---

This manual provides essential information for the setup, operation, maintenance, and troubleshooting of your Lenovo IdeaPad 15.6" FHD Touchscreen Laptop. Designed for versatility and performance, this laptop features a powerful Intel Core i7 processor, ample memory and storage, and a vibrant touchscreen display, running on Windows 11 Pro.



Image: The Lenovo IdeaPad laptop, showcasing its touchscreen and key features like Intel i7, Backlit Keyboard, Copilot, Fingerprint Reader, and WiFi 6E.

## SETUP

---

### 1. Initial Power-On

1. Unpack the laptop and all accessories from the box.
2. Connect the power adapter to the laptop's power connector and then to a power outlet.
3. Open the laptop lid. The laptop may power on automatically, or you may need to press the power button located on the side or keyboard deck.
4. Follow the on-screen instructions to complete the initial Windows 11 Pro setup, including language selection, network connection, and user account creation.

### 2. Connecting Peripherals

Your IdeaPad laptop offers various ports for connecting external devices:

- **USB 2.0 Ports:** For connecting older USB devices like mice, keyboards, or printers.
- **USB 3.2 Gen 1 Port:** For faster data transfer with compatible USB devices.
- **USB-C 3.2 Gen 1 Port:** Supports data transfer, Power Delivery, and DisplayPort 1.2. Use this for modern peripherals, charging compatible devices, or connecting to external displays with a compatible adapter.
- **HDMI 1.4b Port:** Connect to external monitors, projectors, or TVs for extended display.
- **Headphone / Microphone Combo Jack (3.5mm):** For connecting headphones, external speakers, or a headset with a microphone.
- **SD Card Reader:** Insert an SD card to access photos and files directly.

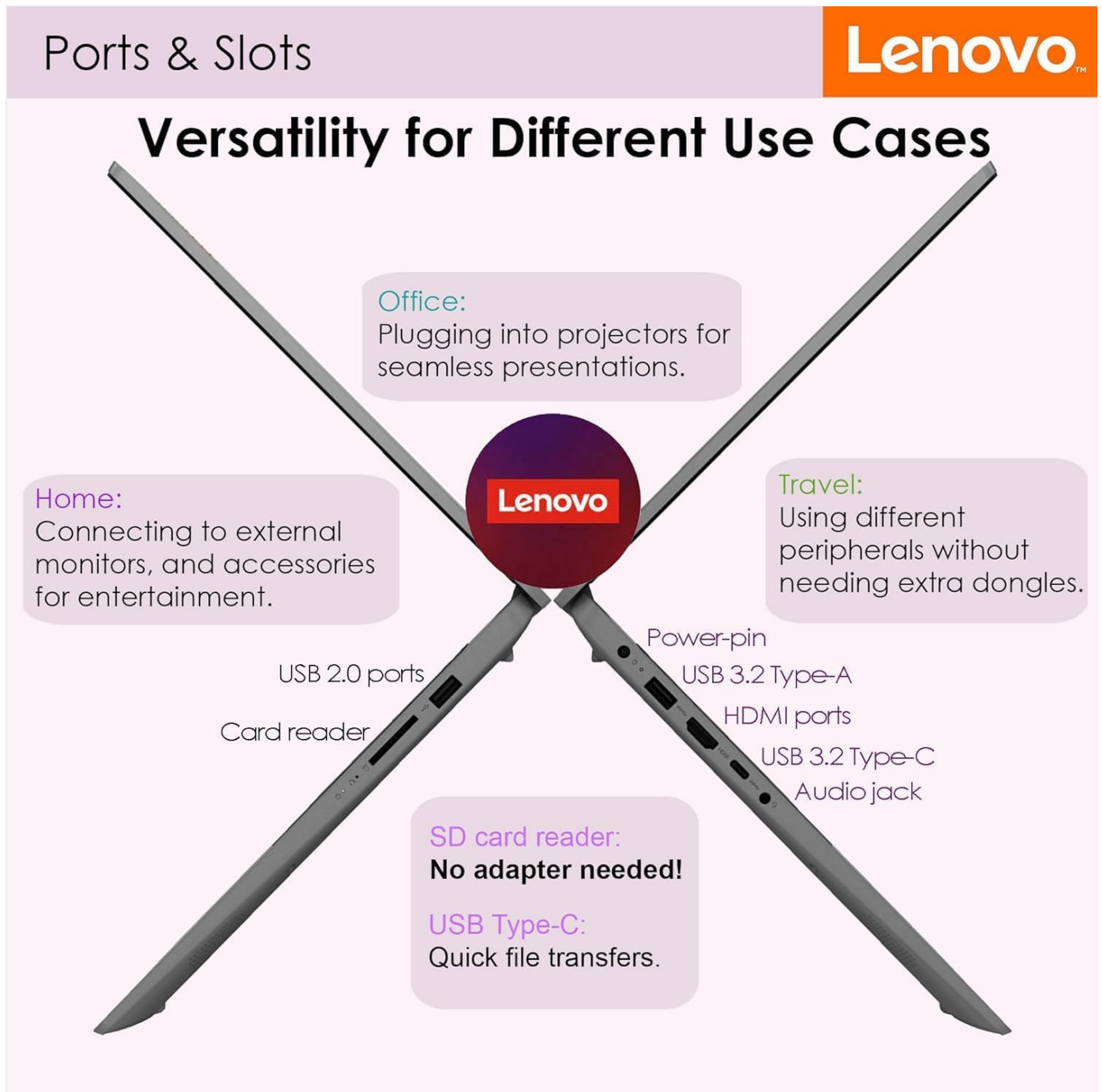


Image: Diagram illustrating the various ports and slots on the Lenovo IdeaPad laptop, including USB, HDMI, USB-C, audio jack, and SD card reader, highlighting their versatility for different use cases like office, home, and travel.

## OPERATING INSTRUCTIONS

## 1. Display and Graphics

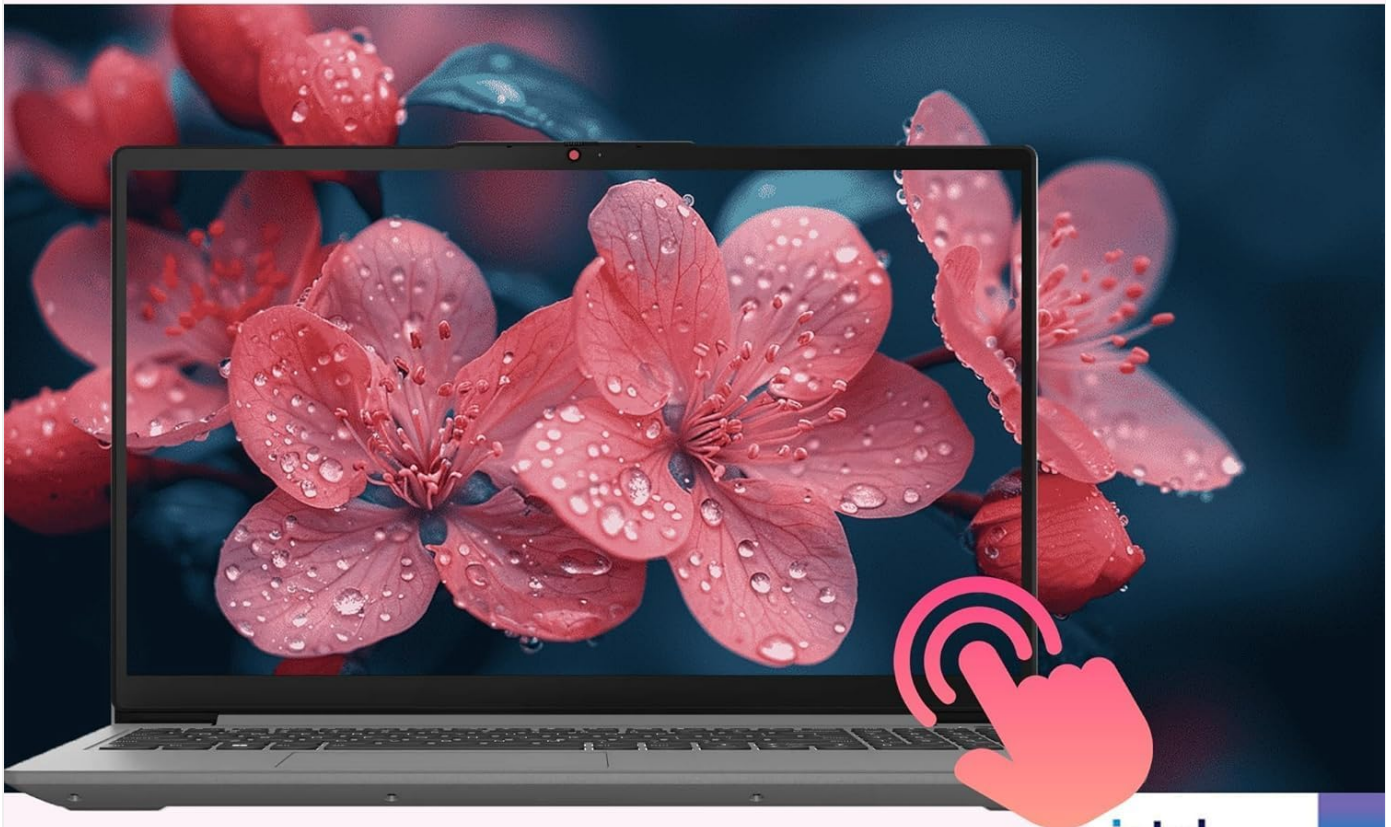
Your laptop features a 15.6" Full HD (1920x1080) IPS touchscreen display with 300 nits brightness and anti-glare properties. The integrated Intel Iris Xe Graphics ensures clear visuals and vibrant image quality for all your content.

### Display- Intel Iris Xe Graphics

Lenovo™



Enjoy your favorite content in FHD for crystal-clear visuals and vibrant image quality.



15.6" FHD (1920x1080) IPS 300nits Touch Screen with LED Backlit Anti-Glare Display.

intel.  
iRIS<sup>®</sup>xe  
GRAPHICS

Image: A close-up of the Lenovo IdeaPad's 15.6" FHD touchscreen display, emphasizing its clarity and the Intel Iris Xe Graphics capability.

## 2. Processor, Memory, and Storage

Equipped with an Intel Core i7-1255U processor (10 Cores, 12 Threads, up to 4.7GHz), 40GB DDR4 RAM, and a 1TB PCIe NVMe M.2 Solid State Drive, the laptop delivers robust performance for multitasking, demanding applications, and fast boot-up times.

# Discover the Power of IdeaPad 3i



Intel® Core™  
i7-1255U



Smart Noise Cancelling



Intel® Iris® Xe  
Graphics



**See more.  
Do more**

With an FHD  
IPS touchscreen  
display and  
enhanced color  
accuracy, the  
future looks  
bright



**Lenovo  
IdeaPad 3i  
15"**



Physical privacy  
shutter and  
fingerprint reader



**Perform at  
your best**

Keep your desk  
tidy with a  
Type-C™ port for  
fast data transfer



Upto **40GB**  
DDR4 RAM



**2 TB**  
SSD



At just 19.9 mm  
thick, the sleek  
and easy to  
carry IdeaPad 3i  
is made to  
travel

**Dolby Audio**  
Speakers

**Lenovo**

Image: Infographic detailing key features of the Lenovo IdeaPad 3i, including Intel Core i7-1255U, Intel Iris Xe Graphics, FHD IPS touchscreen, 40GB DDR4 RAM, 2TB SSD (variant shown), physical privacy shutter, fingerprint reader, slim design, and Dolby Audio speakers.

Design  
Build  
Innovate  
Compete

# Faster

Smarter  
technology  
for all

Lenovo

Go beyond performance with the 12 Gen Intel® Core™ processors<sup>1</sup> on Lenovo



Lenovo  
**IDEAPAD**

Smart Login with Privacy Shutter



Ultra-Thin Laptop

Slim design, engineered with advanced cooling systems  
that prevent overheating



Fast Performance

faster boot times, quick application launches,  
and smooth multitasking

Image: Visual emphasizing the faster performance of the Lenovo IdeaPad, showcasing its slim design, advanced cooling, and quick application launches.

### 3. Keyboard and Fingerprint Reader

The backlit keyboard allows for comfortable typing in various lighting conditions. The integrated fingerprint reader, located in the power button, provides secure and convenient login via Windows Hello.

# Backlighting keyboard & Fingerprint

Lenovo™



Easier Typing for users who work, play, or study in low-light environments.



Image: Depiction of the Lenovo IdeaPad's backlit keyboard and the fingerprint power button, highlighting ease of typing in low light and secure login.

## 4. Audio System

Experience enhanced audio with front-facing stereo speakers (1.5W x2), optimized with Dolby Audio. This provides rich and robust sound for entertainment and communication.

# Dolby Audio

Innovation  
Never  
Stands Still

Lenovo™

Enhance your entertainment experience  
with robust and rich Dolby Audio speakers.  
Watch on-the-go anytime, anywhere



Image: A visual representation of the Dolby Audio feature on the Lenovo IdeaPad, showing sound waves emanating from the laptop speakers.

## 5. Connectivity

Stay connected with Wi-Fi 6 (11ax 2x2) for high-speed wireless internet and Bluetooth 5.2 for connecting wireless peripherals like headphones or mice.



Image: Graphic illustrating the Wi-Fi 6 technology on the Lenovo IdeaPad, symbolizing hyper-speed connectivity.

## 6. Webcam and Privacy Shutter

The integrated HD 720p webcam is suitable for video calls and online meetings. For enhanced privacy, utilize the physical privacy shutter to block the camera lens when not in use.

## MAINTENANCE

---

### 1. Cleaning

- Use a soft, lint-free cloth slightly dampened with water or a screen cleaner to clean the display. Avoid harsh chemicals.
- For the keyboard and chassis, use a soft, dry cloth. A can of compressed air can help remove dust from between keys.
- Ensure the laptop is powered off and unplugged before cleaning.

### 2. Software Updates

Regularly check for and install Windows updates to ensure system stability, security, and performance. You can find these in Windows Settings > Windows Update.

### 3. Battery Care

- Avoid extreme temperatures.
- Do not fully discharge the battery frequently.
- If storing the laptop for an extended period, charge the battery to about 50-60% before storage.

## TROUBLESHOOTING

---

### Common Issues and Solutions

- **Laptop does not power on:** Ensure the power adapter is securely connected and the power outlet is functional. Try holding the power button for 10-15 seconds to perform a hard reset.
- **Screen is blank or black:** Check if the laptop is powered on. Try connecting to an external monitor via HDMI to rule out a display issue. Press **Fn + F7** (or the key with a display icon) to toggle display output.
- **Wi-Fi connectivity issues:** Ensure Wi-Fi is enabled in Windows settings. Restart your router and the laptop. Update Wi-Fi drivers if necessary.
- **Slow performance:** Close unnecessary applications. Check Task Manager for high CPU/RAM usage. Ensure sufficient free space on the SSD. Run a disk cleanup.
- **Keyboard backlight not working:** Press **Fn + Spacebar** to cycle through backlight brightness levels.

### WOWPC Recovery USB

Your device includes a WOWPC recovery USB. This tool is designed to assist with system recovery and troubleshooting, providing greater convenience for resolving software-related issues. Refer to the instructions provided with the WOWPC recovery USB for its specific usage.

## SPECIFICATIONS

---

Feature	Specification
Processor	Intel Core i7-1255U (10C/12T, up to 4.7GHz)
Graphics	Integrated Intel Iris Xe Graphics
Operating System	Windows 11 Pro
Memory	40GB DDR4 RAM
Storage	1TB PCIe NVMe M.2 SSD
Display	15.6" FHD (1920x1080) IPS 300nits Anti-glare Touchscreen
Audio	Dolby Audio, 1.5W x2 Stereo Speakers
Keyboard	Backlit, English (US)
Fingerprint Reader	Touch Style, Integrated in Power Button

Feature	Specification
Webcam	HD 720p with Privacy Shutter
Connectivity	Wi-Fi 6 (11ax 2x2), Bluetooth 5.2
Ports	1x USB 2.0, 1x USB 3.2 Gen 1, 1x USB-C 3.2 Gen 1 (data/PD/DP 1.2), 1x HDMI 1.4b, 1x Headphone/Mic Combo, 1x SD Card Reader, 1x Power Connector
Dimensions (LxWxH)	14.32 x 9.31 x 0.78 inches
Weight	3.59 lbs
Color	Arctic Grey

## WARRANTY AND SUPPORT

---

### Warranty Information

Your Lenovo IdeaPad laptop comes with a standard manufacturer's warranty. Please refer to the warranty card included with your product or visit the official Lenovo support website for detailed terms and conditions, including coverage period and service options.

### Customer Support

For technical assistance, driver downloads, or further support, please visit the official Lenovo support website or contact their customer service. Keep your product's serial number ready when contacting support.

You can find more information and support resources at the [Lenovo Store on Amazon](#).

