

Manuals+

[Q & A](#) | [Deep Search](#) | [Upload](#)

Manuals.plus /

› [Fitop](#) /

› Fitop C&C-0511VS2 Bathroom Exhaust Fan with Light User Manual

Fitop C&C-0511VS2

Fitop C&C-0511VS2 Bathroom Exhaust Fan with Light User Manual

Model: C&C-0511VS2 | Brand: Fitop

1. INTRODUCTION

This manual provides detailed instructions for the installation, operation, and maintenance of your Fitop C&C-0511VS2 Bathroom Exhaust Fan with Light. This unit is designed to effectively remove moisture and odors from your bathroom, featuring a powerful 130 CFM fan and an integrated 1100LM LED light with adjustable color temperatures (3000K/4000K/5000K). Please read this manual thoroughly before installation and use to ensure safe and efficient operation.

2. SAFETY INFORMATION

WARNING: To reduce the risk of fire, electric shock, or injury to persons, observe the following:

- Installation work and electrical wiring must be done by qualified person(s) in accordance with all applicable codes and standards, including fire-rated construction codes and standards.
- Sufficient air is needed for proper combustion and exhausting of gases through the flue (chimney) of fuel-burning equipment to prevent back-drafting. Follow the heating equipment manufacturer's guideline and safety standards such as those published by the National Fire Protection Association (NFPA), and the American Society for Heating, Refrigeration and Air Conditioning Engineers (ASHRAE), and the local code authorities.
- When cutting or drilling into wall or ceiling, do not damage electrical wiring and other hidden utilities.
- Ducted fans must always be vented to the outdoors.
- Do not use this fan with any solid-state speed control device.
- This unit must be grounded.
- Always disconnect power at the service panel before servicing or cleaning the unit.

3. PACKAGE CONTENTS

Please check to ensure all components are present and undamaged:

- Bathroom Exhaust Fan Housing
- LED Light Panel

- Duct Connector (4-inch diameter)
- Mounting Hardware (Hanger Bars, Screws)
- User Manual

4. SPECIFICATIONS

Brand	Fitop
Model Name	C&C-0511VS2
Color	Silver
Electric Fan Design	Exhaust Fan
Power Source	AC
Product Dimensions (D x W x H)	14.28" x 14.28" x 8.5"
Room Type	Bathroom
Special Features	LED Light, High Air Flow, Quiet Operation
Mounting Type	Ceiling Mount
Noise Level	1.5 Sones
Wattage	47 Watts
Air Flow Capacity	130 Cubic Feet Per Minute (CFM)
Voltage	120 Volts (AC)
Indoor/Outdoor Usage	Indoor
Control Method	Push Button, Touch (via wall switch)
Material	Acrylonitrile Butadiene Styrene, Metal, Polycarbonate
Included Components	Light Kit, Exhaust Fan

5. INSTALLATION

IMPORTANT: Ensure power is disconnected at the service panel before beginning installation.

5.1 Pre-Installation Considerations

- The fan is designed for ceiling mount installation.
- Required ceiling opening size: 9.25 inches (L) x 9.25 inches (W) x 5.9 inches (H).
- The light cover measures 14.28 inches x 14.28 inches.
- Duct diameter required: 4 inches (duct not included).



3rd gear Color temp



Figure 1: Exhaust Fan Dimensions. The housing is 9"x9"x5.9", the light cover is 14.28"x14.28", and the duct diameter is 4".

Exhaust Fan with Light



1000
Lumens



130 cfm
Air Flow



3rd Gear
Color Temp



1.5 sone
Noise



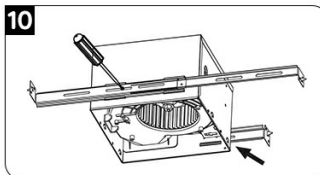
Figure 2: Required Ceiling Opening Size. A 9.25 inch by 9.25 inch opening is needed.

5.2 Step-by-Step Installation

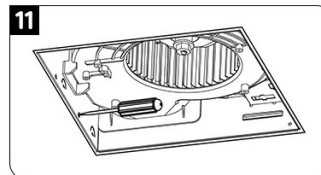
1. **Measure and Cut Ceiling Opening:** Measure and cut the ceiling opening to 9.25 inches x 9.25 inches. Ensure the opening is large enough to accommodate the fan housing.

Special Note:

If the operator can not reach the ceiling attic work, you can choose not fixed bracket.



Put the fan into the open hole, insert the bracket into the guide groove of the fan, extend the bracket to both sides and then fix it with screws, the two ends of the bracket can be fixed without locking screws. The purpose of the bracket unfolding is to ensure the safe operation of the fan.

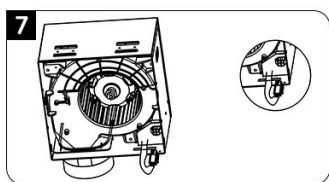


Please locate the 4 screw holes on the side of the exhaust fan and drive the 4 screws vertically into the solid wood side panel at the ceiling opening and make sure the fan is secured to the side panel to reconfirm firmness.

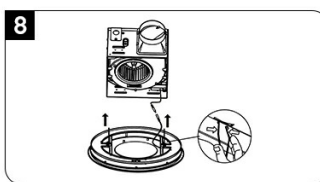
For other installation steps, please refer to the previous steps.

Figure 3: Installation Steps 1-3. Shows measuring and cutting the ceiling, placing the fan housing, and mounting with hanger bars.

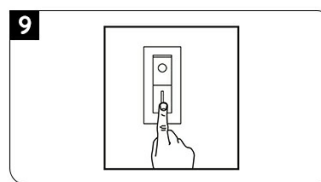
- Place Fan Housing:** Insert the fan housing through the existing hole in the ceiling. Bend the four ears to place the fan housing on the ceiling. The fan housing should be level and perpendicular to the joist.
- Mount with Hanger Bars:** Engage the hanger bar with the channel on the product's casing. Adjust the hanger bar as necessary to mount the product between the framing. Align the hanger bar tab with the inner side of the framing. Using screws, install the product onto the framing through the holes. Attach the end tab of the hanger bar to the framing with screws. Attach the hanger bar onto the product's casing with screws.
- Attach Duct Connector:** Attach the duct connector to the fan housing.



Plug fan and light in the power
Plug the motor assembly back into the power unit.
Plug the LED light into the proper power units respectively as the label indicated proper power units respectively as the label indicated.



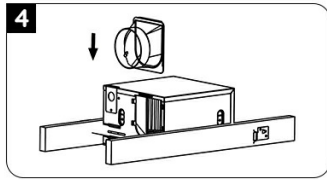
Install the light panel
Attach LED panel by pinching the mounting springs and inserting them into the narrow rectangular slots in the fan housing. Test the unit.



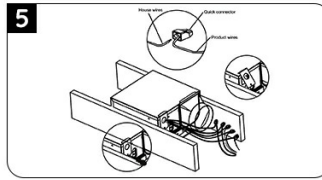
Switch on the light with the last memory status. Toggle the switch (on-off-on) quickly to change to the next CCT (3000K, 5000K, 4000K).

Figure 4: Installation Steps 4-6. Shows attaching the duct connector, connecting fan and house wires, and installing the duct.

- Connect Wires:** Connect the fan and house wires through the hole and into the junction box (not included). Use 120VAC house wiring from the wall switch to the fan as shown in the wiring diagram. 14AWG is the smallest conductor that shall be used for branch-circuit wiring. Push the wires back through the hole. Reattach the wiring box cover.
- Install Duct:** Install a circular 4-inch duct (not included) and secure it with duct tape or clamps (neither included). Finish ceiling work. The ceiling hole should be aligned with the edge of the fan housing.

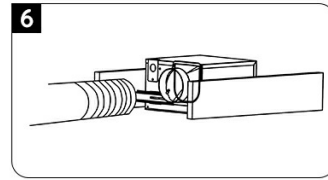


4
Attach the duct connector to the fan housing.
Attach duct connector to the fan housing as shown in the drawing.



5
Connect the house and fan wires
Connect the wire through the hole and into the junction box (not included). Using a wire nut (not included), secure 120VAC house wiring from the wall switch to the fan as shown in the wiring diagram. 14AWG is the smallest conductor that shall be used for branch-circuit wiring.

CAUTION: Make sure power is switched off at service panel before starting installation.
Push the wires back through the hole. Reattach the wiring box cover.



6
Install the duct
Install a circular 4in. duct (Not included) and secure it with duct tape or clamps (neither included).
Finish ceiling work.
The ceiling hole should be aligned with the edge of the fan housing

Figure 5: Installation Steps 7-9. Shows plugging in the fan and light, installing the light panel, and switching on the light.

7. **Plug Fan and Light:** Plug the motor assembly back into the power unit. Plug the LED light into the proper power units respectively as the label indicated.
8. **Install Light Panel:** Attach the LED panel by pinching the mounting springs and inserting them into the narrow rectangular slots in the fan housing. Test the unit.
9. **Switch On:** Switch on the light.

5.3 Wiring Options

The fan and light can be wired in two configurations:

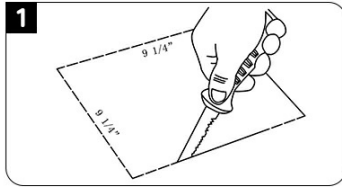
- **One Switch Control:** Both lighting and fan are controlled simultaneously by a single ON/OFF switch.
- **Two Switch Control:** The lighting and fan are controlled independently by two separate ON/OFF switches.



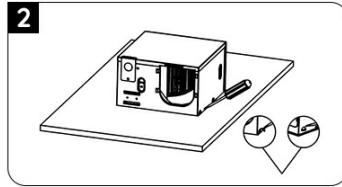
Figure 6: Wiring Options. Left shows one switch controlling both fan and light. Right shows two switches controlling fan and light separately.

5.4 Special Note for Installation

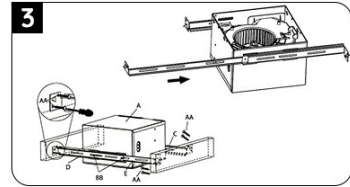
If access to the ceiling attic is not possible, you can choose a fixed bracket installation method. Put the fan into the open hole, insert the bracket into the guide groove of the fan, extend the bracket to both sides, and then fix it with screws. The purpose of the bracket unfolding is to ensure the safe operation of the fan. Locate the 4 screw holes on the side of the exhaust fan and drive the 4 screws vertically into the solid wood side panel at the ceiling opening and make sure the fan is secured to the side panel to reconfirm firmness.



1
 Measure and cut the ceiling opening
 Measure the opening to ensure it is large enough to accommodate the fan housing (9-1/4 in x 9-1/4 in.).
 And then cut.



2
 Place the fan housing
 Insert the housing through the existing hole in the ceiling.
 Then bend the four ears to place the fan housing on the ceiling. The fan housing should be level and perpendicular to the joist.



3
 Mount with Hanger Bars and Mounting Holes
 Engage hanger bar with the channel on the product's casing.
 Adjust hanger bar as necessary to mount the product between the framing.
 Align the hanger bar tab with the inner side of the framing.
 Using screws, install the product onto the framing through Holes.
 Using screws, attach the end tab of the hanger bar to the framing
 Using screws, attach the hanger bar onto the product's casing.

Figure 7: Alternative Installation Method. Shows how to install the fan using a fixed bracket when attic access is limited.

6. OPERATING INSTRUCTIONS

6.1 Fan Operation

Once installed and wired, the exhaust fan will operate when the corresponding wall switch is turned ON. The fan provides 130 CFM airflow to effectively remove moisture and odors from your bathroom.

130 CFM

Long-time work without maintenance



Figure 8: Fan Airflow. The fan draws air upwards to ventilate the room.



Figure 9: Quiet Operation. The fan operates at a low noise level of 1.5 sones.

6.2 Light Operation and Color Temperature Adjustment

The integrated LED light provides 1100 lumens of illumination and offers three selectable color temperatures: 3000K (soft white), 4000K (bright white), and 5000K (daylight).

To change the color temperature, simply toggle the light switch (ON-OFF-ON) quickly. Each quick toggle will cycle through the available color temperatures. The light features a memory function: if the light is turned off for more than 10 seconds, it will automatically save the last selected color temperature and resume that setting when turned back on.



Figure 10: Customizable Lighting. Choose between 3000K, 4000K, and 5000K light settings.

7. MAINTENANCE

Regular maintenance ensures optimal performance and longevity of your exhaust fan. Always disconnect power at the service panel before performing any maintenance.

7.1 Cleaning the Light Cover and Fan Grille

- Gently remove the LED light panel by pinching the mounting springs.
- Wipe the light cover and the visible fan grille with a soft, damp cloth. Do not use abrasive cleaners or solvents.
- Ensure all parts are completely dry before reattaching the light panel.

7.2 Motor Maintenance

The fan motor is permanently lubricated and requires no additional oiling or maintenance.

8. TROUBLESHOOTING

If you experience issues with your exhaust fan, refer to the following troubleshooting guide:

Problem	Possible Cause	Solution
Fan does not operate	No power to the unit; Loose wiring; Motor malfunction.	Check circuit breaker/fuse; Verify wiring connections (consult a qualified electrician); Contact customer support if motor is faulty.
Light does not turn on	No power to the unit; Loose wiring; LED panel malfunction.	Check circuit breaker/fuse; Verify wiring connections (consult a qualified electrician); Ensure LED panel is properly plugged in; Contact customer support if LED panel is faulty.
Light color temperature does not change	Incorrect toggling of the switch; Faulty switch or LED driver.	Toggle the light switch OFF and ON quickly to cycle through colors; If issue persists, consult a qualified electrician to check the switch and wiring.
Fan is excessively noisy	Loose mounting; Obstruction in fan blades; Damaged motor.	Ensure fan housing is securely mounted; Check for debris in the fan blades (with power off); Contact customer support if motor is damaged.
Poor ventilation/steam removal	Ductwork obstruction; Improper duct installation; Fan malfunction.	Check ductwork for blockages or kinks; Ensure duct is properly sealed and vented outdoors; Contact customer support if fan performance is low.

9. WARRANTY AND SUPPORT

Fitop is committed to providing high-quality products. This product is manufactured and certified to meet regional, national, and international industry standards. For any questions, concerns, or warranty claims, please contact Fitop customer support. Please refer to your purchase documentation for specific warranty terms and contact information.