

[Manuals.plus](#) /

> [ANNLARY](#) /

> ANNLARY 5-in-1 Ionic Hot Air Styler User Manual (Model: HL-3030E)

## ANNLARY HL-3030E

# ANNLARY 5-in-1 Ionic Hot Air Styler User Manual

Model: HL-3030E

## 1. INTRODUCTION

Thank you for choosing the ANNLARY 5-in-1 Ionic Hot Air Styler. This versatile styling tool is designed to dry, straighten, curl, smooth, and add volume to your hair with professional results. Featuring a powerful 1400W motor, smart heat control, and ionic technology, it ensures efficient styling while protecting your hair from heat damage. Please read this manual thoroughly before use to ensure safe and optimal performance.

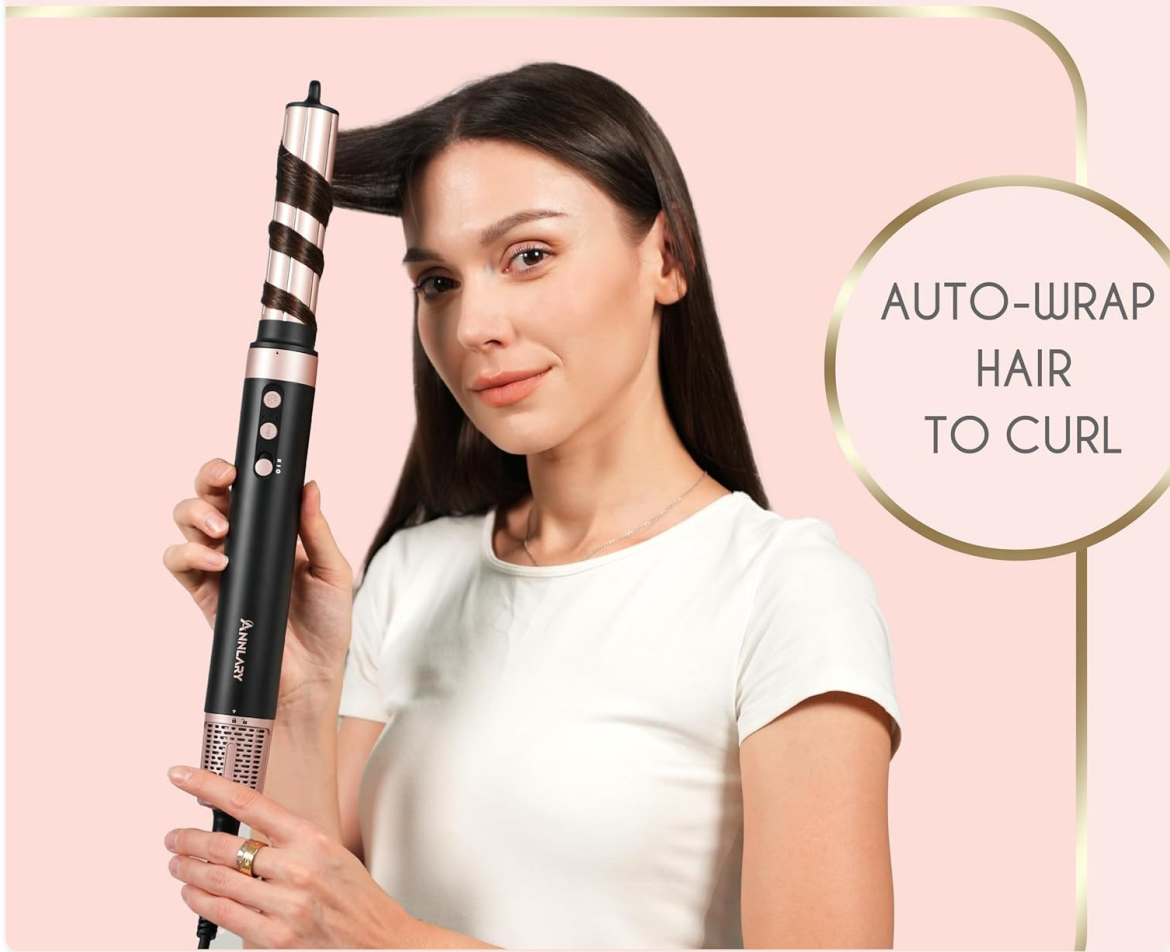
## 2. PRODUCT OVERVIEW & WHAT'S IN THE BOX

Your ANNLARY 5-in-1 Ionic Hot Air Styler comes with a main unit and five interchangeable attachments, along with essential accessories for a complete styling experience.

- **Main Styler Unit:** The core device with controls for power, temperature, and airflow.
- **High-Speed Hair Dryer Attachment:** For fast and efficient drying.
- **Auto-Wrap Curling Barrels (1.25"):** Two barrels for creating left and right-facing curls.
- **Paddle Brush:** For smoothing and straightening hair.
- **Volumizing Brush:** For adding volume and natural bounce.
- **Travel & Storage Bag:** A premium bag for organized storage and portability.
- **Heat-Resistant Glove:** To protect your hand during styling.
- **Sectioning Clips:** Two clips for precise hair sectioning.

# Auto-Wrap Air Technology

Styling Without Heat Damage



AUTO-WRAP  
HAIR  
TO CURL

Figure 2.1: The ANNLARY 5-in-1 Ionic Hot Air Styler with its complete set of interchangeable attachments.

# 5-in-1 Hair Styling Tool

Dry, Straighten, Curl, Smooth & Add Volume with Ease

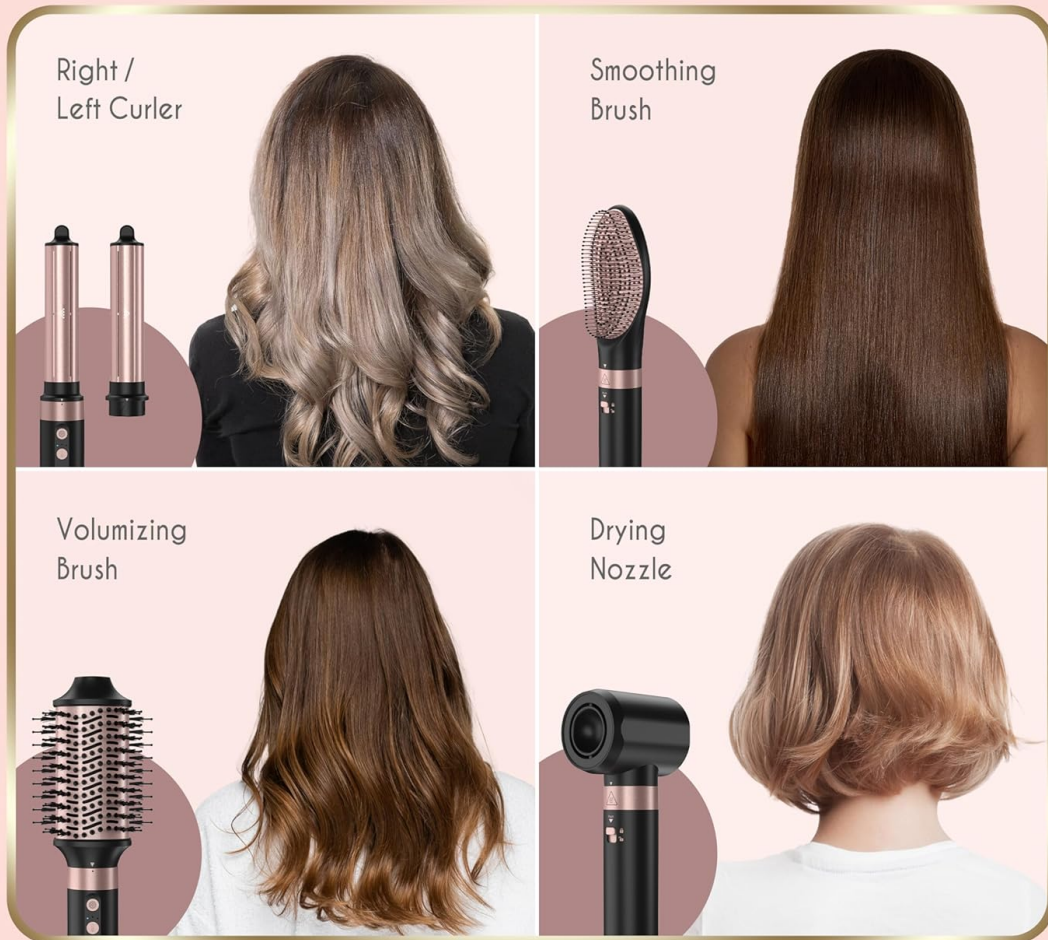


Figure 2.2: The styler and its accessories neatly packed in the included pink travel and storage bag.

## 3. SAFETY INFORMATION

Please adhere to the following safety guidelines to prevent injury or damage to the device:

- Keep out of reach of children.
- Do not use while bathing or near water.
- Do not rinse or submerge the device in water.
- Keep the power plug and cord away from heated surfaces.
- Always unplug the device when not in use.
- Ensure hands are dry before plugging in or unplugging the device.
- Do not operate with a damaged cord or plug.
- Do not block the air intake or exhaust vents during operation.
- Use the heat-resistant glove when handling hot attachments.

## 4. SETUP

Before first use, unpack all components and familiarize yourself with the main unit and attachments.

### 4.1 Attaching and Detaching Accessories

1. To attach an accessory: Align the desired attachment with the main styler unit. Push the attachment firmly onto the unit until you hear a click, indicating it is securely locked.
2. To detach an accessory: Locate the 'Push' button on the main unit. Press and hold the 'Push' button while gently twisting and pulling the attachment away from the main unit.

Your browser does not support the video tag.

Video 4.1: Demonstrating the quick-release detachable attachments for the ANNLYARY 5-in-1 Styler. This video shows how to easily attach and detach the various styling heads, highlighting the secure locking mechanism and the push-button release for seamless transitions between styling options.

## 5. OPERATING INSTRUCTIONS

### 5.1 General Controls

The main styler unit features intuitive controls:

- **Power Button:** Turns the device on/off and adjusts airflow speed (Low, Medium, High).
- **Temperature Button:** Cycles through temperature settings (Cool, Low, Medium, High).
- **Cool Shot Button:** Provides a burst of cool air to set your style.

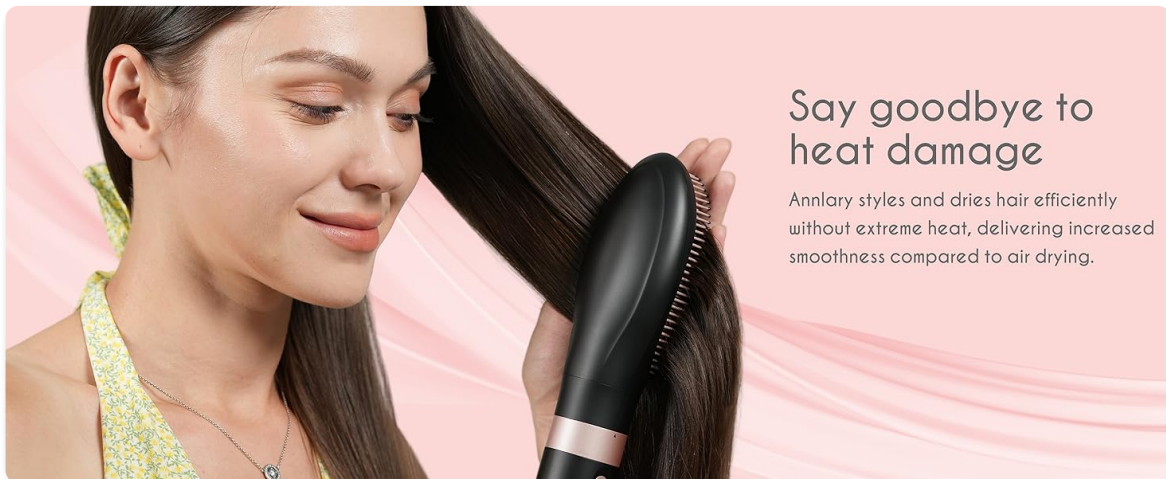
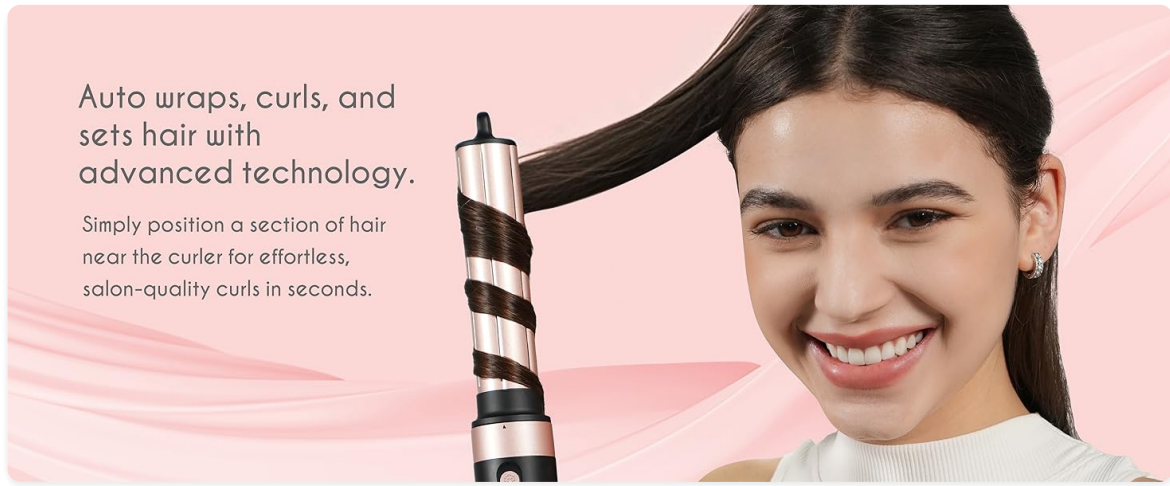


Figure 5.1: Detailed view of the main styler unit's control panel, illustrating the power, temperature, and cool shot buttons, along with their respective indicator lights for easy operation.

### 5.2 Using the High-Speed Hair Dryer Attachment

Attach the hair dryer nozzle to the main unit. Use this attachment to quickly dry your hair before styling with other tools, or for a smooth, fast blow-dry.



Auto wraps, curls, and sets hair with advanced technology.

Simply position a section of hair near the curler for effortless, salon-quality curls in seconds.

Figure 5.2: A user demonstrating the high-speed hair dryer attachment, highlighting its powerful 110,000 RPM motor for rapid drying.

### 5.3 Using the Auto-Wrap Curling Barrels

Select the appropriate curling barrel (left or right-facing, indicated by arrows on the barrel) based on the desired curl direction. Ensure your hair is damp, not soaking wet, for best results.

1. Attach the chosen auto-wrap curling barrel to the main unit.
2. Take a section of hair (approximately 1-2 inches wide).
3. Hold the styler vertically and bring the hair section close to the barrel. The Coanda effect will automatically wrap the hair around the barrel.
4. Hold for 10-15 seconds until the curl is formed.
5. Press the cool shot button for 5-10 seconds to set the curl.
6. Release the hair by pulling the styler downwards.
7. Repeat for all sections of hair.



### Dual bristle design

Detangles, smooths, and enhances hair shine while boosting volume and natural bounce.

Figure 5.3: A user demonstrating the auto-wrap curling barrels, showing how hair is automatically wrapped around the barrel for effortless curls.

Your browser does not support the video tag.

Video 5.1: A user demonstrating the auto-wrap curling function, showing how hair is drawn to and wrapped around the barrel to create curls. The video also shows the process of detaching the dryer nozzle and attaching the curling barrel.

### 5.4 Using the Paddle Brush

Attach the paddle brush for a sleek, straight finish. This brush simultaneously dries and straightens, reducing frizz and enhancing shine.

1. Attach the paddle brush to the main unit.
2. Section your hair.
3. Brush through each section from root to tip, applying gentle tension.

## Quick-Release Detachable Attachments

The Annlary Hot Air Styler allows for fast and secure attachment changes, ensuring smooth transitions between styling options— all without interrupting your daily routine.



Figure 5.4: A user demonstrating the paddle brush attachment, effectively smoothing and straightening hair for a polished finish.

## 5.5 Using the Volumizing Brush

Attach the volumizing brush to add body and bounce to your hair. Its dual bristle design helps detangle, smooth, and boost volume.

1. Attach the volumizing brush to the main unit.
2. Section your hair.
3. Place the brush near the roots and roll it downwards through the hair, lifting at the roots for maximum volume.

## 360-Degree Air Intake Design

The 360-degree surround air intake ensures ample airflow for powerful output. It effectively filters hair and particles, while the outer mesh prevents tangling, providing a smooth and tangle-free styling experience.



Figure 5.5: A user demonstrating the volumizing brush attachment, showing how it lifts hair at the roots to create natural bounce and volume.

## 6. SMART FEATURES

### 6.1 Smart Heat Control

The ANNLYRY Styler features built-in sensors that monitor air temperature over 1,000 times per second. This

ensures consistent heat delivery, preventing extreme heat damage and maintaining hair health.

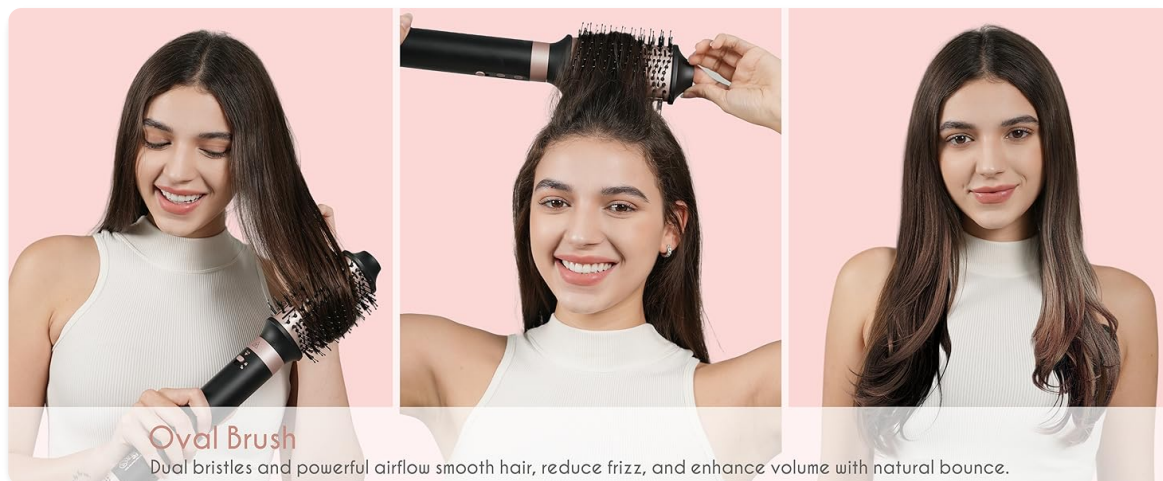


Figure 6.1: A graphic illustrating the smart heat control technology, which maintains a consistent temperature to prevent heat damage, unlike other stylers with fluctuating heat.

## 6.2 Ionic Technology

Advanced negative ion technology helps to reduce frizz, lock in moisture, and enhance shine, leaving your hair smoother and healthier with every use.

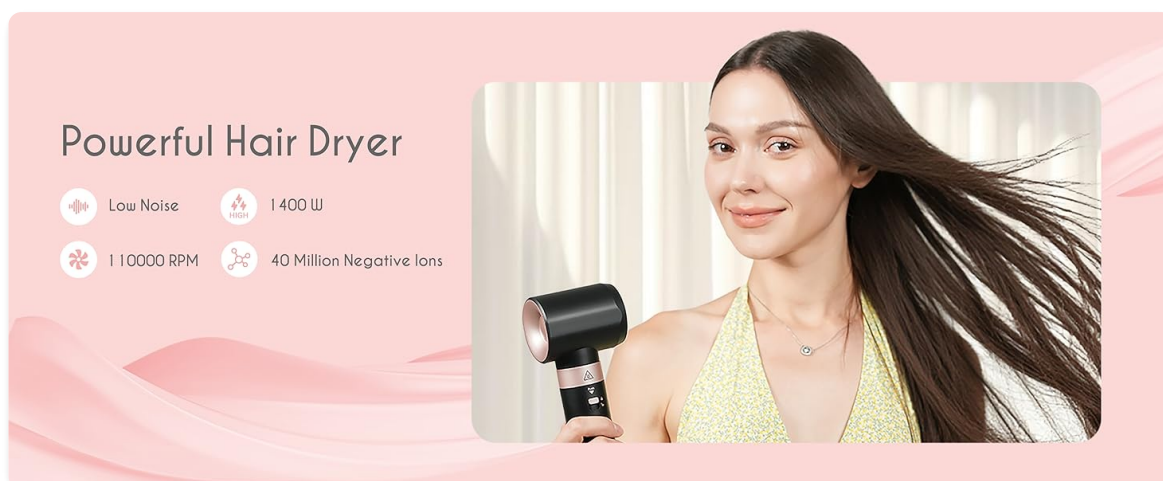


Figure 6.2: A visual representation of the benefits of 40 million negative ions, resulting in smoother, shinier, and frizz-free hair.

## 7. MAINTENANCE AND CARE

Proper maintenance ensures the longevity and optimal performance of your styler.

- **Cleaning:** Ensure the device is unplugged and cool before cleaning. Wipe the main unit and attachments with a soft, damp cloth. Do not use abrasive cleaners or immerse in water.
- **Filter Cleaning:** The styler features a detachable air inlet and filter. Regularly clean the filter to prevent hair and dust buildup, which can affect performance. Twist and pull to remove the filter, clean with a soft brush, and reattach.
- **Storage:** Store the styler and its attachments in the provided travel and storage bag in a cool, dry place.

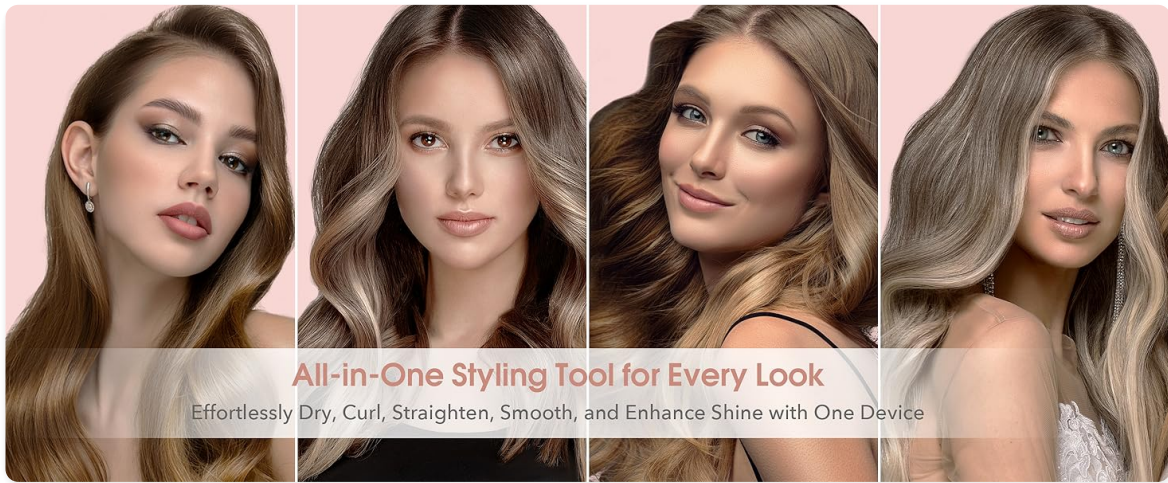


Figure 7.1: The 360-degree air intake design, which ensures ample airflow and prevents tangling, also features a removable filter for easy cleaning.

## 8. TROUBLESHOOTING

If you encounter any issues, please refer to the following common problems and solutions:

| Problem                           | Possible Cause                                | Solution   |
|-----------------------------------|---|--|
| Device does not turn on.          | Not plugged in correctly; Power outlet issue. | Ensure the power cord is securely plugged into a working outlet. Check the power switch.   |
| Weak airflow or overheating.      | Blocked air intake filter.                    | Unplug the device and clean the air intake filter as described in Section 7.   |
| Attachments not locking securely. | Incorrect alignment or debris.                | Ensure the attachment is correctly aligned and pushed firmly until it clicks. Check for any debris obstructing the connection.   |
| Curls do not hold.                | Hair too wet; Not using cool shot; Hair type. | Ensure hair is damp, not soaking wet. Use the cool shot function to set curls. Consider using hairspray or styling products for longer hold, especially for fine hair. |

## 9. SPECIFICATIONS

- **Product Dimensions:** 1.65 x 1.65 x 10.6 inches
- **Weight:** 3.57 Pounds
- **Manufacturer:** ANNLARY
- **ASIN:** B0F7GCKXTY
- **Color:** Black/Rose Gold
- **Material:** Plastic

- **Wattage:** 1400 watts
- **Power Source:** Corded Electric
- **Motor Speed:** 110,000 RPM
- **Ionic Output:** 40 Million Negative Ions

## **10. WARRANTY AND SUPPORT**

For warranty information, technical support, or customer service inquiries, please refer to the contact details provided with your product packaging or visit the official ANNLARY website. Keep your purchase receipt as proof of purchase for any warranty claims.