

DONPER VFL110CY1

DONPER VFL110CY1 Refrigerator Compressor Inverter Drive Control Board User Manual

Model: **VFL110CY1** (Compatible with HGFE-492B Inverter Fridges)

1. INTRODUCTION

Thank you for choosing the DONPER VFL110CY1 Refrigerator Compressor Inverter Drive Control Board. This component is designed to provide precise control and efficient operation for compatible inverter refrigerators, ensuring optimal performance and longevity of your appliance. This manual provides essential information for the safe installation, operation, and maintenance of the control board.

1.1 Safety Information

- **Professional Installation Required:** Installation of this control board should only be performed by qualified and certified technicians. Improper installation can lead to electric shock, fire, or damage to the appliance.
- **Disconnect Power:** Always ensure the refrigerator is completely disconnected from the main power supply before attempting any installation, maintenance, or repair.
- **Electrostatic Discharge (ESD) Precautions:** Electronic components are sensitive to static electricity. Handle the board by its edges and use appropriate ESD protection (e.g., anti-static wrist strap) to prevent damage.
- **Inspect for Damage:** Before installation, carefully inspect the control board for any visible damage. Do not install a damaged board.
- **Correct Wiring:** Ensure all wiring connections are correct and secure according to the refrigerator's service manual. Incorrect wiring can cause severe damage.

2. PRODUCT OVERVIEW

The DONPER VFL110CY1 is an advanced inverter drive control board specifically engineered for refrigerator compressors. It integrates sophisticated algorithms to manage compressor speed and power, contributing to energy efficiency and stable temperature regulation within the refrigeration unit.

2.1 Key Features

- **Precise Temperature Control:** Features a built-in high-sensitivity temperature sensor that accurately controls the compressor's start and stop timing, maintaining a stable low-temperature environment and extending food preservation.
- **Compressor Protection:** Continuously monitors the compressor's operating status, quickly cutting off power upon detecting abnormal conditions such as excessive current or temperature.
- **Rapid Refrigeration Start-up:** Equipped with a quick response mechanism to prompt the compressor to run at full capacity, rapidly reducing the refrigerator's internal temperature.
- **Silent and Noise Reduction Design:** Utilizes precise algorithms to reasonably adjust compressor speed, ensuring smooth operation and significantly reducing mechanical friction noise for a quieter environment.



Figure 1: Front view of the DONPER VFL110CY1 Refrigerator Compressor Inverter Drive Control Board. This image displays the front side of the control board, showing the main components including the large capacitor, transformer, and various integrated circuits. The board is green with white markings, and a connected sensor or component with black wires is visible on the right.

3. INSTALLATION GUIDE

Warning: Installation must be performed by a qualified service technician. Failure to follow these instructions can result in serious injury or damage to the product and appliance.

1. **Power Disconnection:** Ensure the refrigerator is unplugged from the electrical outlet.
2. **Access the Control Board:** Locate and carefully remove the access panel or cover that houses the existing compressor control board. Refer to your refrigerator's service manual for specific instructions.
3. **Disconnect Old Board:** Carefully disconnect all wiring harnesses and connectors from the old control board. Note the position and orientation of each connector for correct reinstallation. Taking photos can be

helpful.

4. **Remove Old Board:** Unscrew or unclip the old control board from its mounting points.
5. **Install New Board:** Position the DONPER VFL110CY1 control board in the same location and secure it using the original screws or clips.
6. **Connect Wiring:** Reconnect all wiring harnesses and connectors to the new control board. Ensure each connection is firm and correctly seated. Double-check against your notes or photos.
7. **Secure Access Panel:** Replace the access panel or cover, ensuring it is securely fastened.
8. **Restore Power:** Plug the refrigerator back into the electrical outlet.
9. **Test Operation:** Monitor the refrigerator's operation to ensure the compressor starts and functions correctly, and that temperatures are maintained as expected.

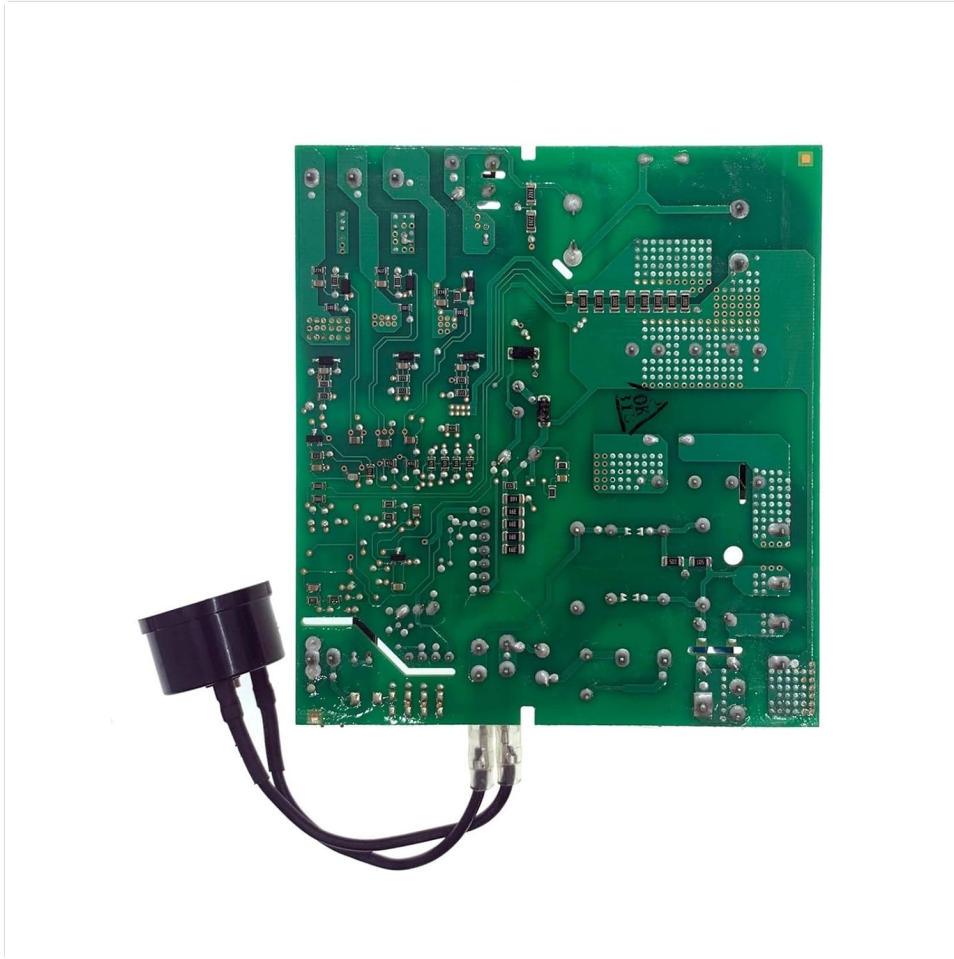


Figure 2: Rear view of the DONPER VFL110CY1 Refrigerator Compressor Inverter Drive Control Board. This image shows the reverse side of the control board, revealing the intricate network of solder points and circuit traces. A connected sensor or component with black wires is also visible, extending from the right side of the board.

4. OPERATING PRINCIPLES

The DONPER VFL110CY1 control board functions as the brain of your refrigerator's inverter compressor system. It continuously receives data from temperature sensors and other system components. Based on this data, the board dynamically adjusts the compressor's speed and power output. This inverter technology allows the compressor to run at varying speeds rather than simply cycling on and off, leading to:

- **Energy Efficiency:** The compressor operates only as much as needed to maintain the set temperature, reducing energy consumption.
- **Stable Temperatures:** More consistent internal temperatures, which helps preserve food quality for longer.

- **Reduced Wear and Tear:** Less frequent on/off cycling extends the lifespan of the compressor.
- **Quieter Operation:** Smooth, continuous operation at lower speeds minimizes operational noise.

5. MAINTENANCE

The DONPER VFL110CY1 control board is designed for long-term reliability and typically requires minimal maintenance. However, adhering to general appliance maintenance practices can help ensure its optimal performance:

- **Keep Area Clean:** Ensure the area around the control board and compressor is free from dust, debris, and obstructions. Dust accumulation can hinder heat dissipation.
- **Ensure Proper Ventilation:** Verify that the refrigerator's ventilation grilles are not blocked, allowing for adequate airflow around the compressor and control board.
- **Periodic Inspection:** During routine refrigerator maintenance (e.g., cleaning condenser coils), a qualified technician can visually inspect the control board and its connections for any signs of wear, corrosion, or loose wiring.
- **Avoid Moisture:** Keep the control board and surrounding components dry. Moisture can cause short circuits and damage.

6. TROUBLESHOOTING

If your refrigerator experiences issues after the installation of the DONPER VFL110CY1 control board, consider the following general troubleshooting steps. For complex issues, always consult a qualified technician.

- **No Power to Refrigerator:**
 - Check if the refrigerator is properly plugged into a working electrical outlet.
 - Verify the circuit breaker for the refrigerator has not tripped.
- **Compressor Not Starting:**
 - Ensure all wiring connections to the control board and compressor are secure.
 - Confirm the refrigerator door is properly closed, as some models prevent compressor operation if the door is ajar.
 - If the issue persists, the control board or compressor may require professional diagnosis.
- **Refrigerator Not Cooling Properly:**
 - Check if the condenser coils are clean and free of dust.
 - Ensure there is adequate space around the refrigerator for proper ventilation.
 - Verify the temperature settings are correct.
- **Unusual Noises:**
 - While the DONPER VFL110CY1 is designed for quiet operation, new or unusual noises could indicate a loose component or a problem with the compressor itself. Consult a technician.

If troubleshooting steps do not resolve the issue, it is recommended to contact a certified appliance repair technician for further assistance.

7. SPECIFICATIONS

Feature	Detail
Product Model	VFL110CY1
Compatible Fridge Model	HGFE-492B (Inverter Fridge)
Type	Refrigerator Compressor Inverter Drive Control Board
Approximate Package Dimensions	0.39 x 0.39 x 0.39 inches
Approximate Item Weight	1.76 ounces
ASIN	B0F7FBTFKR

8. WARRANTY AND SUPPORT

For warranty information, technical support, or service inquiries regarding your DONPER VFL110CY1 Refrigerator Compressor Inverter Drive Control Board, please refer to the documentation provided with your purchase or contact the original seller. Ensure you have your purchase details and the product model number readily available when seeking support.

For general inquiries or to find a qualified service technician, please consult your refrigerator's manufacturer support channels.