

LEDVANCE 75899

LEDVANCE Phase EV Commercial Charger (Model 75899) Instruction Manual

Comprehensive Guide for Installation, Operation, and Maintenance

1. INTRODUCTION

This manual provides detailed instructions for the LEDVANCE Phase EV Commercial Charger, Model 75899. This Level 2 electric vehicle charging solution is designed for commercial and multi-unit environments, offering reliable and intelligent charging capabilities. Please read this manual thoroughly before installation and operation to ensure safe and efficient use of the product.





Image 1.1: Front view of the LEDVANCE Phase EV Commercial Charger.

1.1 Key Features

- **High Charging Power:** Delivers up to 48 Amps and 11.5kW for rapid Level 2 charging.
- **User Interface:** Features a 4.3" color LCD touchscreen with multi-language support (English, French, Spanish).
- **Status Indicator:** Large, bright LED indicator provides real-time charging status.
- **Universal Compatibility:** Equipped with a 25-foot cable and SAE J1772 connector, compatible with most electric vehicles in North America.
- **Flexible Installation:** Supports wall-mount or pedestal configurations for single or dual charger setups.
- **Durable Design:** NEMA 4 and IP65-rated enclosure with IK08 impact resistance for indoor or outdoor use.
- **Smart Connectivity:** Built-in WiFi and Ethernet for seamless integration.
- **Software Integration:** Optional ChargeLab software subscription for advanced management, revenue tracking, and analytics.
- **Energy Efficiency:** ENERGY STAR Certified, with an option for free-charging mode without subscription.



Image 1.2: The LEDVANCE Phase EV Commercial Charger installed on a wall, demonstrating its application.

2. SAFETY INFORMATION

WARNING: Failure to follow these instructions may result in electric shock, fire, or serious injury.

- Installation must be performed by a qualified electrician in accordance with all local and national electrical codes and regulations.
- Do not attempt to open, disassemble, repair, or modify the charger. Contact qualified service personnel for any repairs.
- Ensure the charger is properly grounded to prevent electric shock.
- Do not use the charger if the cable, connector, or enclosure is damaged.
- Keep children away from the charging area during operation.
- Do not immerse the charger or its components in water or other liquids.
- Operate the charger within its specified environmental conditions (temperature, humidity).

3. PACKAGE CONTENTS

Verify that all items listed below are present in the package before proceeding with installation.

- LEDVANCE Phase EV Commercial Charger
- Rear Charger Mounting Plate
- Mounting Template
- Expansion Bolts for Mounting Plate
- Installation Screws
- Tamper-Proof Torx Allen Wrench

- Cable Clamp with Screws
- AD34.5 Conduit Fitting
- AD21.1 Conduit Fitting
- M32 Conduit Fitting
- 2 RFID Access Cards

4. SETUP AND INSTALLATION

The LEDVANCE Phase EV Commercial Charger requires professional installation. Always consult a qualified electrician to ensure compliance with local electrical codes and safety standards.

4.1 Pre-Installation Checklist

- Confirm the electrical supply meets the charger's requirements (240 Volts AC, 48 Amps).
- Ensure a dedicated circuit breaker is available for the charger.
- Select a suitable mounting location (wall or pedestal) that is accessible and protected from potential physical damage.
- Verify the mounting surface can support the charger's weight (approximately 19.46 pounds).

4.2 Mounting the Charger

Use the provided mounting template and hardware to securely attach the rear mounting plate to the chosen surface. The charger can be installed on a wall or integrated into a pedestal for commercial applications.



**SMART CONNECTIVITY BUILT-IN WITH WIFI
AND ETHERNET, PLUS OPTIONAL 4G LTE**



Image 4.1: Rear view of the charger, illustrating mounting points and cable entry.



Image 4.2: Example of a dual charger pedestal installation, demonstrating versatile setup options.

4.3 Electrical Connection

Connect the charger to the electrical supply according to the wiring diagram provided in the full installation guide (not included in this general manual) and local electrical codes. Ensure all connections are secure and properly insulated.

Important: This charger is designed for hardwired installation. Do not use extension cords or adapters.

5. OPERATING INSTRUCTIONS

5.1 Basic Charging Procedure

1. Ensure the charger is powered on and the LED status indicator shows it is ready.

2. Take the J1772 charging connector from its holster.
3. Plug the J1772 connector into your electric vehicle's charging port. Ensure a secure connection.
4. The charger will initiate communication with the vehicle. The LCD screen will display charging status, and the LED indicator will change to reflect active charging.
5. To stop charging, disconnect the J1772 connector from the vehicle. Some vehicles may require unlocking the charging port first.
6. Return the J1772 connector to its holster when charging is complete.





Image 5.1: The SAE J1772 charging connector, compatible with most EVs.

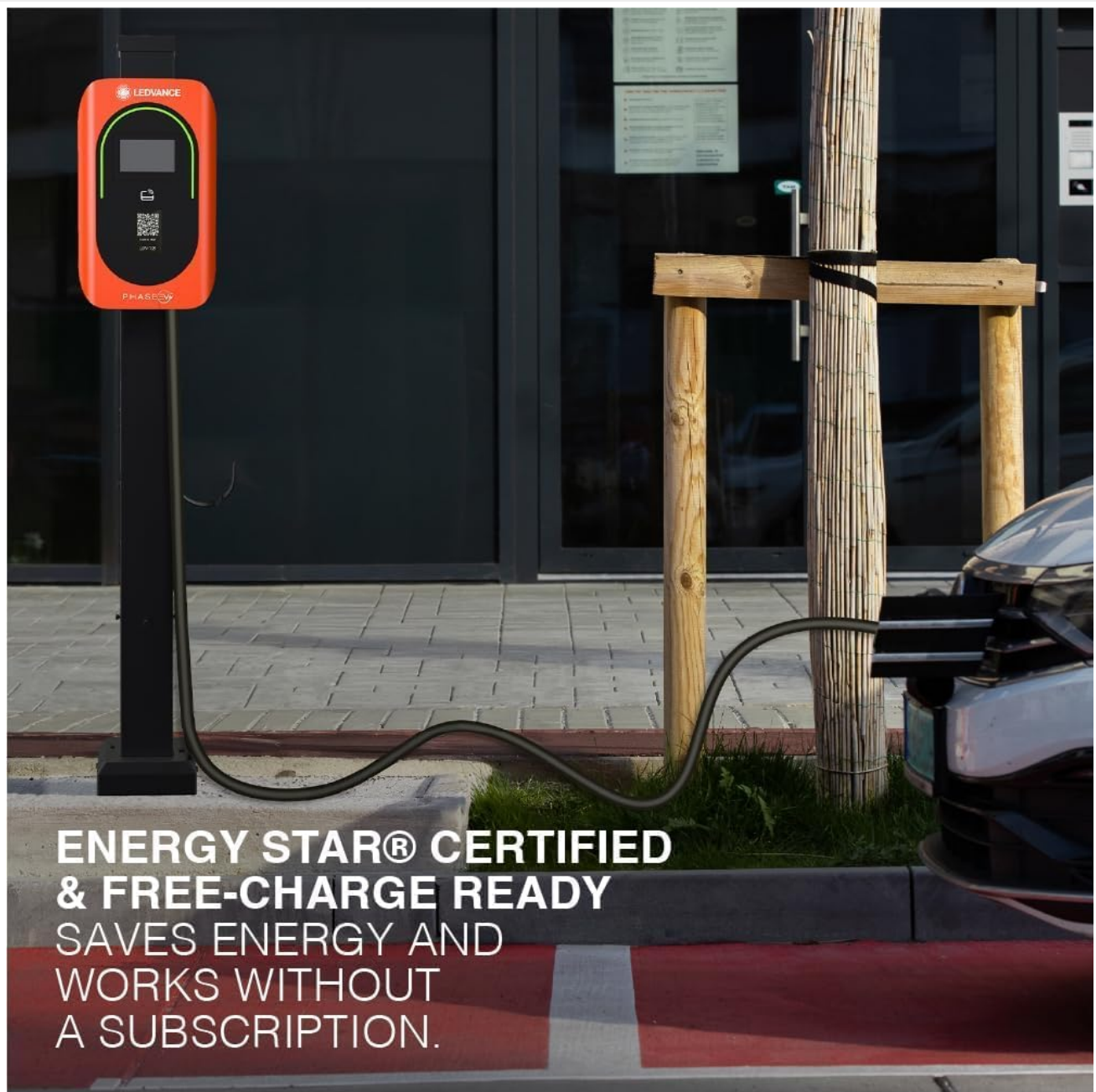


Image 5.2: An electric vehicle connected to the charger, indicating active charging.

5.2 LCD Touch Screen Interface

The 4.3" color LCD touchscreen provides access to charging information, settings, and language selection. Follow the on-screen prompts for navigation.

5.3 Smart Connectivity and App Usage

The charger features built-in WiFi and Ethernet for smart connectivity. For advanced features such as scheduling, remote monitoring, and access control, download the associated mobile application (e.g., ChargeLab, if subscribed) and follow the in-app instructions for setup and usage.



Image 5.3: A user interacting with a mobile application to manage EV charging, highlighting smart connectivity.

6. MAINTENANCE

- **Regular Cleaning:** Wipe the charger's exterior with a soft, damp cloth. Do not use abrasive cleaners or solvents.
- **Cable Inspection:** Periodically inspect the charging cable and connector for any signs of wear, damage, or fraying. Replace if damaged.
- **Connection Check:** Ensure all electrical connections remain tight and secure. This should be performed by a qualified electrician.
- **Software Updates:** Keep the charger's firmware updated through the mobile application or web portal to ensure optimal performance and access to new features.

7. TROUBLESHOOTING

Problem	Possible Cause	Solution
Charger not powering on.	No power supply; circuit breaker tripped.	Check the circuit breaker. Ensure the charger is properly connected to the power source. Consult an electrician if issues persist.
Charging not initiating.	Connector not fully inserted; vehicle not ready to charge; charger fault.	Ensure the J1772 connector is securely plugged into the vehicle. Check vehicle's charging settings. Restart the charger if necessary.
Slow charging speed.	Vehicle charging limits; power supply issues; charger settings.	Verify vehicle's maximum charging rate. Check charger settings via LCD or app. Ensure stable power supply.
Wi-Fi/Ethernet connectivity issues.	Network interference; incorrect settings; router issues.	Check network connection. Reconfigure Wi-Fi settings on the charger. Restart router. Ensure charger is within Wi-Fi range or Ethernet cable is connected.

For issues not listed here or if troubleshooting steps do not resolve the problem, please contact LEDVANCE customer support.

8. TECHNICAL SPECIFICATIONS

Feature	Detail
---------	--------

Feature	Detail
Model Number	75899
Charging Level	Level 2
Maximum Output Power	11.5 kW
Current Rating	48 Amps
Output Voltage	240 Volts (AC)
Connector Type	SAE J1772
Cable Length	25 feet
Display	4.3" Color LCD Touch Screen
Connectivity	WiFi, Ethernet
Enclosure Rating	NEMA 4, IP65
Impact Resistance	IK08
Certifications	UL, FCC, ENERGY STAR Certified
Product Dimensions (H x W x D)	15.83 x 9.61 x 4.64 inches
Item Weight	19.46 pounds
Color	Black, Orange

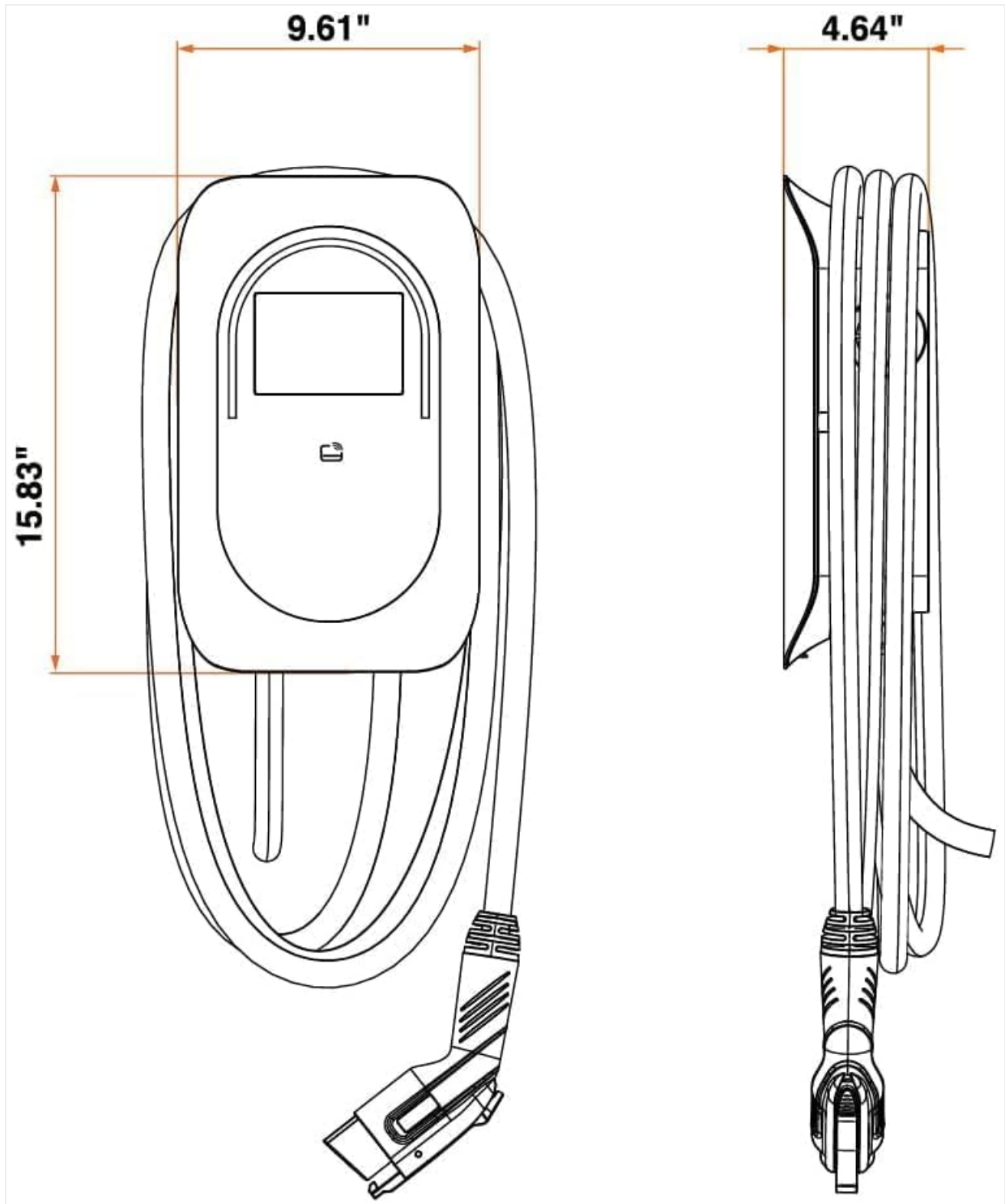


Image 8.1: Dimensional drawing of the charger, indicating height, width, and depth.


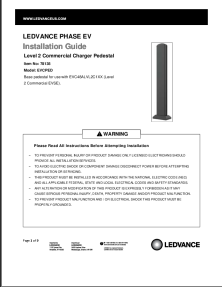

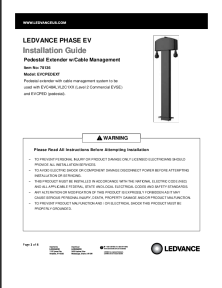
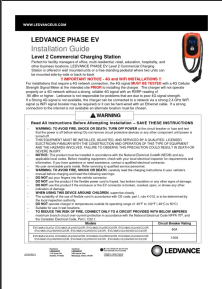
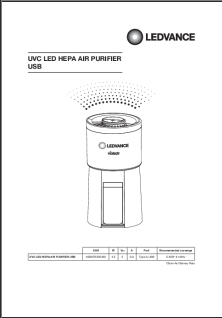
9. WARRANTY AND SUPPORT

The LEDVANCE Phase EV Commercial Charger is backed by a manufacturer's warranty. Please refer to the official LEDVANCE website or the warranty card included with your product for specific terms and conditions.

For technical assistance, troubleshooting, or warranty claims, please contact LEDVANCE customer support through their official channels.

- **Manufacturer:** LEDVANCE
- **Website:** www.ledvance.com (Example link, actual link may vary)

Related Documents - 75899

	<p>LEDVANCE PHASE EV Gen 2 Pedestal Installation Guide</p> <p>This guide provides installation procedures for the LEDVANCE PHASE EV Gen 2 pedestal, a Level 2 Commercial Charging Station Pedestal. It covers mounting single, back-to-back, and side-by-side chargers, along with cable management systems.</p>
	<p>LEDVANCE PHASE EV Level 2 Commercial Charger Pedestal Installation Guide</p> <p>Detailed installation guide for the LEDVANCE PHASE EV Level 2 Commercial Charger Pedestal (Item No: 78135, Model: EVCPPED). Covers safety, parts, tools, and step-by-step installation procedures for commercial EVSE.</p>
	<p>LEDVANCE PHASE EV Installation Guide: Setup and Safety Instructions</p> <p>Comprehensive installation guide for the LEDVANCE PHASE EV charger. Covers safety instructions, product specifications, mounting procedures, wiring, and troubleshooting for electric vehicle charging stations.</p>
	<p>LEDVANCE PHASE EV Pedestal Extender Installation Guide</p> <p>Comprehensive installation guide for the LEDVANCE PHASE EV Pedestal Extender with Cable Management (Model EVCPEDEXT). Includes safety precautions, parts list, tools required, and step-by-step installation instructions for commercial EVSE installations.</p>
	<p>LEDVANCE PHASE EV Level 2 Commercial Charging Station Installation Guide</p> <p>Comprehensive installation guide for the LEDVANCE PHASE EV Level 2 Commercial Charging Station, covering setup, wiring, and configuration for various installation types.</p>
	<p>LEDVANCE UVC LED HEPA Air Purifier USB - Portable Air Cleaner</p> <p>Discover the LEDVANCE UVC LED HEPA Air Purifier USB, a compact and portable device designed to improve air quality. Featuring UVC sterilization and HEPA H13 filtration, it effectively removes airborne particles and microorganisms. Ideal for personal spaces.</p>