

Ninja DT551

Ninja Prestige Smart XL with Pro Cook System 10-in-1 Air Fry Digital Countertop Convection Toaster Oven

MODEL: DT551

User Manual

1. IMPORTANT SAFETY INSTRUCTIONS

When using electrical appliances, basic safety precautions should always be followed to reduce the risk of fire, electric shock, and/or injury to persons, including the following:

- Read all instructions before using the appliance.
- Do not touch hot surfaces. Always use oven mitts or potholders when handling hot materials.
- To protect against electrical shock, do not immerse cord, plugs, or main unit in water or other liquid.
- Close supervision is necessary when any appliance is used by or near children.
- Unplug from outlet when not in use and before cleaning. Allow to cool before putting on or taking off parts, and before cleaning the appliance.
- Do not operate any appliance with a damaged cord or plug, or after the appliance malfunctions or has been damaged in any manner.
- The top surface of the oven gets warm during operation. Ensure adequate clearance from cabinets and other objects.

2. WHAT'S INCLUDED

Your Ninja Prestige Smart XL Oven comes with the following components:

- Prestige Smart XL Air Fryer & Countertop Oven with Pro Cook System
- (2) Wire Racks
- (2) Sheet Pans
- Roast Tray
- Removable Crumb Tray
- Air Fry Basket
- Pro Cook Thermometer
- 15 Chef Created Recipes and Cooking Charts



Includes

Ninja® Prestige Smart XL Air Fryer & Countertop Oven with Pro Cook System, 2 sheet pans, 2 wire racks, 1 air fry basket, 1 crumb tray, quick start guide, and 15-recipe guide.

Image: The Ninja Prestige Smart XL Oven displayed with all its included accessories, such as wire racks, sheet pans, air fry basket, and the Pro Cook System thermometer.

3. SETUP

Follow these steps to set up your oven for first-time use:

1. **Placement:** Place the oven on a flat, stable, heat-resistant surface. Ensure there is at least 6 inches (15 cm) of clearance on all sides of the appliance for proper air circulation.
2. **Initial Cleaning:** Before first use, wipe down the exterior of the unit with a damp cloth. Wash all included accessories (wire racks, sheet pans, roast tray, air fry basket, crumb tray, and thermometer) in warm, soapy water. Rinse thoroughly and dry completely.
3. **Power Connection:** Plug the power cord into a grounded electrical outlet. The display will illuminate.

4. OPERATING INSTRUCTIONS

Control Panel Overview

The control panel features an intuitive digital display and tactile buttons for easy operation.



Smart Surround Convection™

Our high-velocity fan and rear heat source combine to completely surround food for all-around even crisping.

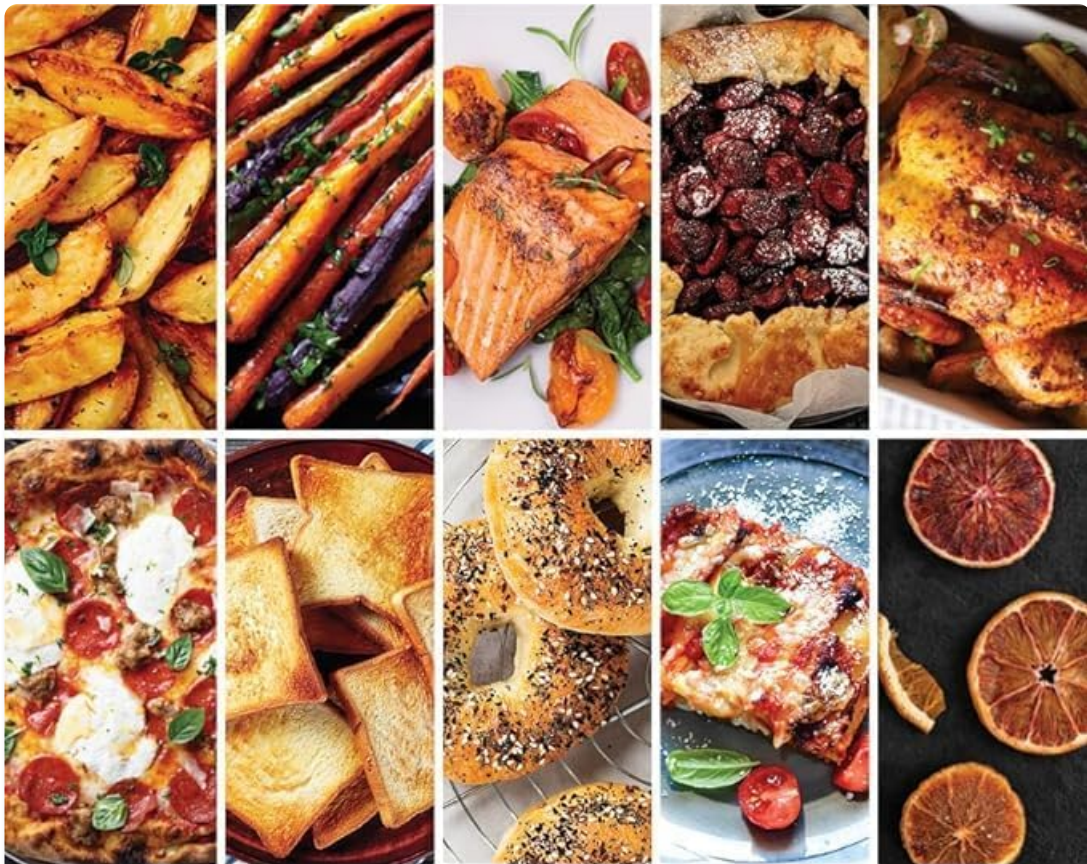
Image: A detailed view of the oven's control panel, highlighting the digital display and individual buttons for functions, time, temperature, and the Pro Cook System.

- **Power Button:** Turns the unit on and off.
- **Function Dial:** Rotate to select from the 10 cooking functions.
- **Time/Temperature Buttons:** Use the '+' and '-' buttons to adjust cooking time and temperature.
- **Rack Level:** Select the appropriate rack level for your chosen function.
- **Light Button:** Turns the interior oven light on or off.
- **Smart Cook System / Doneness:** Activates the integrated thermometer and allows selection of desired doneness levels.
- **Start/Stop Button:** Initiates or pauses the cooking cycle.

Cooking Functions

The Ninja Prestige Smart XL offers 10 versatile cooking programs:

- **Air Fry:** For crispy results with little to no oil.
- **Air Roast:** Evenly roasts food for tender interiors and crispy exteriors.
- **Broil:** High heat from above for quick searing and browning.
- **Bake:** Perfect for cakes, cookies, and other baked goods.
- **Whole Roast:** Ideal for larger cuts of meat or poultry.
- **Pizza:** Optimized settings for cooking fresh or frozen pizzas.
- **Toast:** For perfectly browned toast.
- **Bagel:** Specifically designed for toasting bagels.
- **Reheat:** Gently warms leftovers without drying them out.
- **Dehydrate:** Removes moisture from foods for snacks like fruit leathers or jerky.



10-in-1 functionality

Air Fry, Air Roast, Broil, Bake, Whole Roast,
Pizza, Toast, Bagel, Reheat, Dehydrate.

Image: A visual representation of the diverse cooking capabilities, showcasing dishes prepared with Air Fry, Air Roast, Broil, Bake, Whole Roast, Pizza, Toast, Bagel, Reheat, and Dehydrate functions.

Pro Cook System with Auto Temp Detect Intelligence

The integrated Pro Cook System ensures perfect doneness from rare to well-done without guesswork. Simply insert the thermometer probe into the thickest part of your food, select your desired doneness level, and the oven will automatically adjust cooking to achieve optimal results.



Pro Cook System

The Pro Cook System with Auto Temp Detect Intelligence gets you the perfect doneness without the guesswork.

Image: The Pro Cook System in action, demonstrating the use of the integrated thermometer for precise cooking of meats.

5. CLEANING & MAINTENANCE

Regular cleaning ensures optimal performance and extends the life of your appliance.

- **Before Cleaning:** Always unplug the oven from the power outlet and allow it to cool completely before cleaning.
- **Exterior:** Wipe the exterior surfaces with a damp cloth. Do not use abrasive cleaners or scouring pads, as they may damage the finish.
- **Interior:** The interior walls can be wiped with a damp cloth. For stubborn food residue, use a non-abrasive liquid cleanser or mild spray solution.
- **Removable Crumb Tray:** The crumb tray should be emptied and cleaned after each use. Slide it out from the bottom front of the oven, discard crumbs, and wash in warm, soapy water.
- **Accessories:** All included accessories (wire racks, sheet pans, roast tray, air fry basket, and thermometer probe) are dishwasher safe or can be hand-washed in warm, soapy water.

6. TROUBLESHOOTING

If you encounter any issues with your Ninja Prestige Smart XL Oven, refer to the following common problems and solutions:

- **Unit is noisy during operation:** This is often normal for convection ovens due to the fan. Ensure the unit is on a stable, level surface and that no accessories are rattling inside.
- **Uneven cooking results:** Ensure the oven is preheated thoroughly before adding food. Verify that the correct rack level is selected for the chosen function. Avoid overcrowding the oven to allow for proper air circulation.
- **Food not cooking to desired doneness:** Double-check selected time and temperature settings. If using the Pro Cook System, ensure the thermometer probe is correctly inserted into the thickest part of the food and the desired doneness is selected.
- **Interior corrosion or discoloration:** This can occur over time with use. Regular cleaning and avoiding harsh abrasive cleaners can help mitigate this. If significant, contact customer support.

7. SPECIFICATIONS

Feature	Specification
Brand	Ninja
Product Dimensions	12"D x 12"W x 16"H
Material	Stainless Steel
Control Type	Touch
Model Name	Ninja DT551
Item Weight	42 pounds
Power Source	Electric

8. WARRANTY & SUPPORT

For warranty information, product registration, or customer support, please refer to the warranty card included in your product packaging or visit the official Ninja website. Keep your purchase receipt as proof of purchase for any warranty claims.