

CE-KFR26W/BP3, CE-KFR26W/BP2(IR-120)

# Instruction Manual for Generic Midea Air Conditioner Board

Models: CE-KFR26W/BP3, CE-KFR26W/BP2(IR-120)

## 1. INTRODUCTION

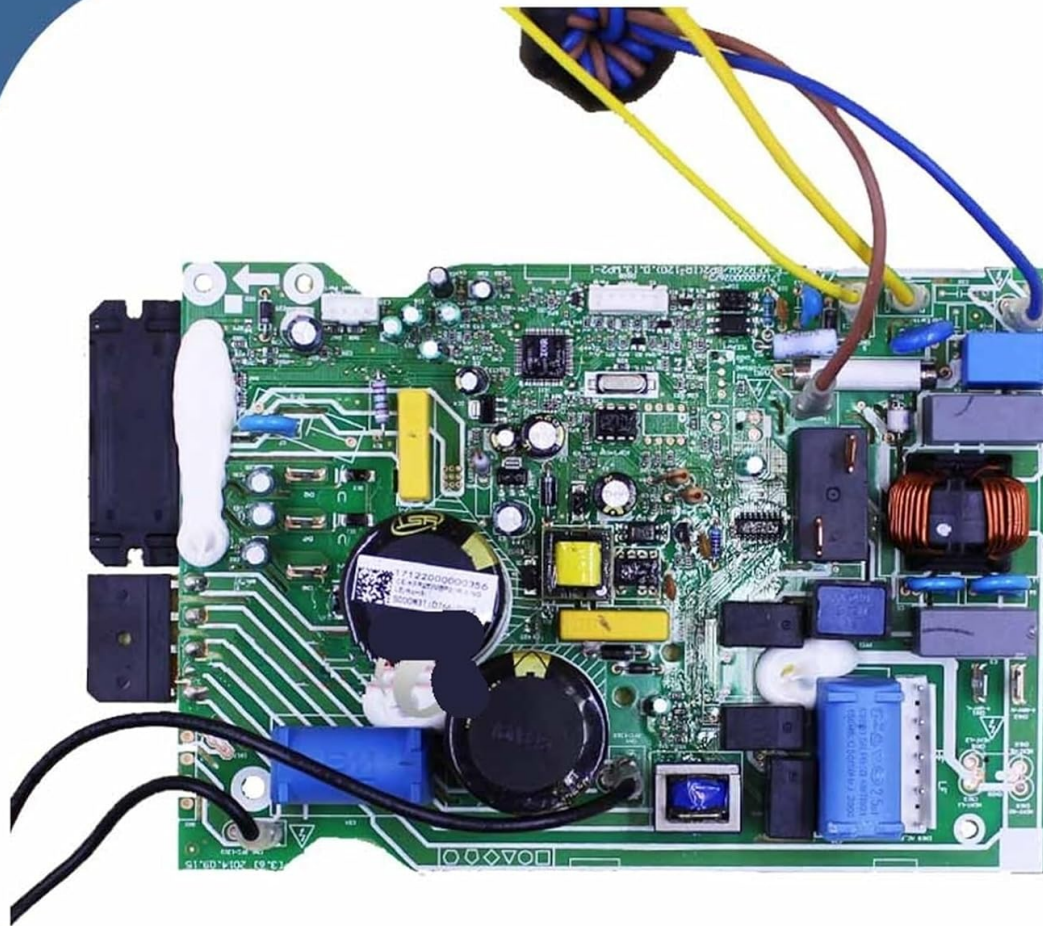
---

This manual provides essential information for the proper handling, installation, and maintenance of the Generic replacement control board for Midea Air Conditioners. This product is designed to be compatible with specific Midea AC models, including CE-KFR26W/BP3 and CE-KFR26W/BP2(IR-120). Please read all instructions carefully before proceeding with installation or use.

## 2. PRODUCT OVERVIEW

---

This product is a high-quality replacement circuit board for Midea air conditioning units. It is manufactured with fine workmanship and uses durable materials to ensure reliable performance. The board serves as the central control unit for the air conditioner's various functions.



## **CE-KFR26W/BP2(IR-120).D.13.WP2-1**

Figure 1: Front view of the Midea Air Conditioner Control Board. This image displays the top side of the circuit board, highlighting the arrangement of integrated circuits, resistors, capacitors, and connection ports. Wires are visible connected to some terminals.

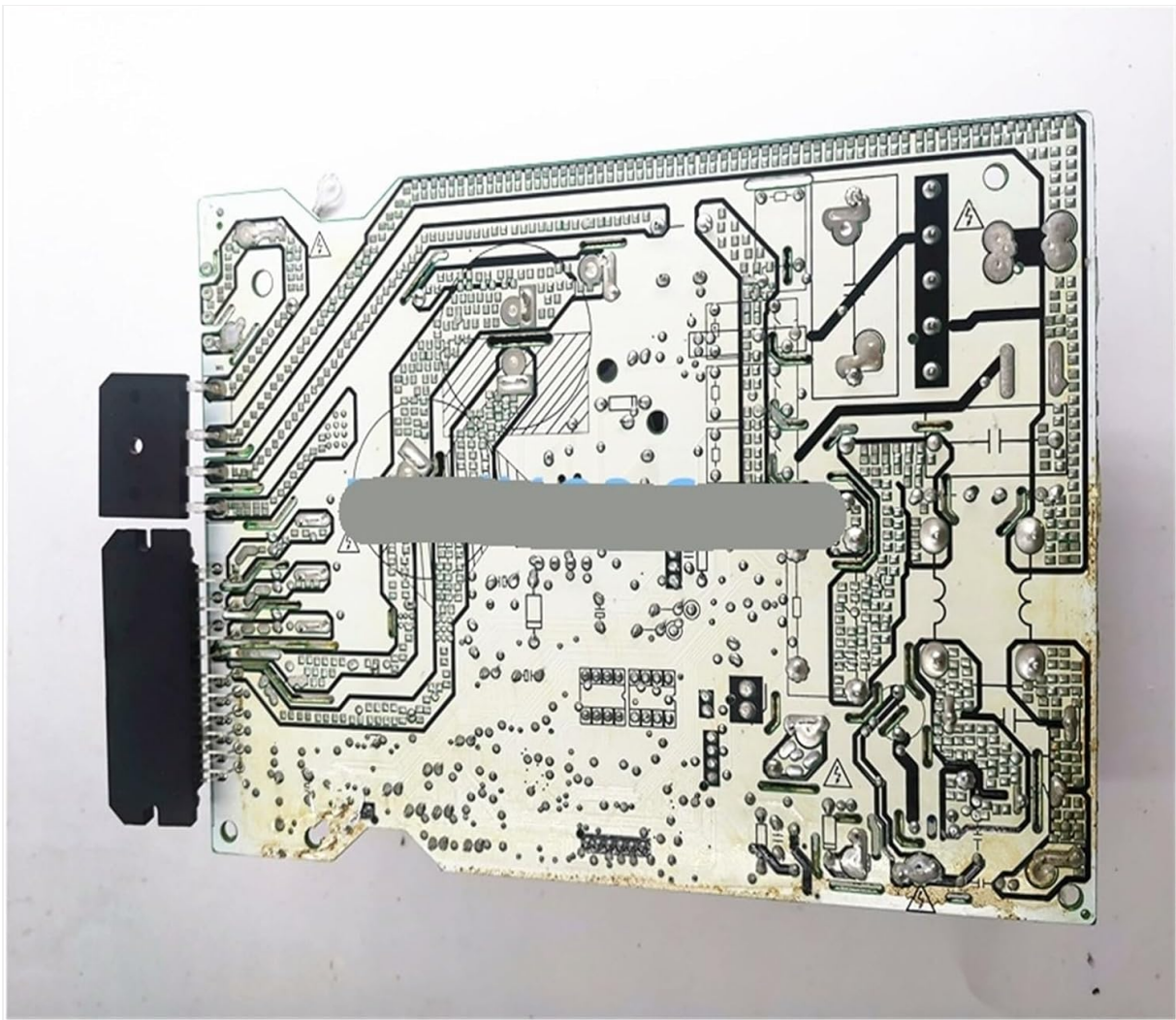


Figure 2: Rear view of the Midea Air Conditioner Control Board. This image shows the underside of the circuit board, revealing the intricate network of copper traces and solder points that form the electrical connections.

### 3. SETUP AND INSTALLATION

---

**Warning: Installation should only be performed by qualified and certified HVAC technicians. Improper installation can lead to electric shock, fire, or damage to the air conditioning unit.**

1. **Safety First:** Ensure the air conditioning unit is completely disconnected from its power source before beginning any work. Verify with a voltage tester.
2. **Access the Existing Board:** Carefully open the air conditioner's housing to gain access to the existing control board. Note the location and orientation of all components and wiring. Taking photographs can be helpful.
3. **Disconnect Wiring:** Systematically disconnect all wires and connectors from the old control board. Label each wire and its corresponding terminal to ensure correct reconnection.
4. **Remove Old Board:** Unscrew or unclip the old control board from its mounting points.
5. **Install New Board:** Position the new Generic control board in the same location and orientation as the old one. Secure it using the original screws or clips.
6. **Reconnect Wiring:** Carefully reconnect all labeled wires and connectors to their correct terminals on the new board. Double-check all connections for security and accuracy.
7. **Close Unit:** Once all connections are secure and verified, close the air conditioner's housing.
8. **Power On and Test:** Restore power to the air conditioning unit. Perform a functional test to ensure all

modes and features operate correctly.

## 4. OPERATING INSTRUCTIONS

---

As a replacement circuit board, this product does not have direct user-operable controls. Its function is to enable the proper operation of your Midea air conditioning unit. Once installed correctly, the air conditioner should function according to its original manufacturer's specifications. Refer to your Midea air conditioner's user manual for specific operating instructions, including temperature settings, mode selection, and timer functions.

## 5. MAINTENANCE

---

The control board itself requires minimal maintenance. However, to ensure its longevity and the optimal performance of your air conditioner, consider the following:

- **Regular Inspection:** During routine air conditioner maintenance, visually inspect the board for any signs of dust accumulation, corrosion, or loose connections.
- **Keep Dry:** Ensure the air conditioner's internal environment remains dry to prevent moisture damage to electronic components.
- **Cleanliness:** If dust accumulates, gently clean the board using a soft brush or compressed air. Ensure power is disconnected before cleaning.

## 6. TROUBLESHOOTING

---

If your air conditioner does not function correctly after replacing the control board, consider the following troubleshooting steps:

- **No Power:** Check if the air conditioner is receiving power. Verify circuit breakers and power connections.
- **Incorrect Wiring:** Double-check all wire connections to the control board against your labels or photographs taken during disassembly. Ensure no wires are loose or incorrectly connected.
- **Component Damage:** Inspect the new board for any visible damage that might have occurred during shipping or installation.
- **Professional Assistance:** If the issue persists, it is recommended to contact a qualified HVAC technician for diagnosis and repair. Complex electrical issues should always be handled by professionals.

## 7. SPECIFICATIONS

---

Feature	Specification
Compatible Models	Midea CE-KFR26W/BP3, CE-KFR26W/BP2(IR-120)
Item Model Number	JCIABBJFC
Package Dimensions	0.39 x 0.39 x 0.39 inches
Item Weight	3.53 ounces
Assembly Required	No (Professional installation recommended)

Number of Pieces	1
Batteries Required	No

## **8. WARRANTY AND SUPPORT**

---

For warranty information regarding this replacement part, please refer to the terms and conditions provided by your seller at the time of purchase. As this is a generic replacement part, warranty coverage may vary. For technical support or further assistance, please contact the seller or a qualified HVAC professional.