

[Manuals.plus](#) /

> [CAROTMAS](#) /

> CAROTMAS MARS68 PRO Rapid Trigger Magnetic Switch Gaming Keyboard User Manual

CAROTMAS MARS68 PRO

CAROTMAS MARS68 PRO Rapid Trigger Magnetic Switch Gaming Keyboard User Manual

1. INTRODUCTION

This manual provides detailed instructions for the CAROTMAS MARS68 PRO Rapid Trigger Magnetic Switch Gaming Keyboard. Please read this manual thoroughly before using the product to ensure proper operation and to maximize your gaming and typing experience. Keep this manual for future reference.



Image 1: The CAROTMAS MARS68 PRO Rapid Trigger Magnetic Switch Gaming Keyboard.

2. PACKAGE CONTENTS

Verify that all items are present in the package:

- CAROTMAS MARS68 PRO Gaming Keyboard
- USB Cable (Type-C)
- Keycap Puller
- User Manual (this document)

3. PRODUCT OVERVIEW

The MARS68 PRO is a 68-key Tenkeyless (TKL) mechanical gaming keyboard featuring rapid trigger magnetic switches, designed for high-performance gaming and efficient typing. It offers extensive

customization options including adjustable actuation points, RGB backlighting, and hot-swappable switches.



Image 2: Overview of the MARS68 keyboard series, highlighting its design.

Key Features:

- **Rapid Trigger Magnetic Switches:** Allows for dynamic adjustment of actuation and reset points.
- **Adjustable Actuation Point:** Fine-tune actuation from 0.01mm to 3.50mm in 0.01mm increments.
- **Ultra-Low Latency:** Achieves an input delay of 0.125ms with 0 deadzones for immediate response.

- **High Polling Rate:** 8000Hz polling rate and 64kHz sampling rate for smooth and fast gameplay.
- **Hot-Swappable Switches:** Easily replace switches to customize your typing and gaming feel.
- **68-Key TKL Layout:** Compact design maximizes desk space while retaining essential keys.
- **Per-Key RGB Backlighting:** Customize lighting patterns and effects for each key.

4. SETUP

4.1. Connecting the Keyboard

1. Locate the USB-C port on the back or side of the MARS68 PRO keyboard.
2. Connect the provided USB-C cable to the keyboard's USB-C port.
3. Connect the other end of the USB cable to an available USB port on your computer.
4. The keyboard will automatically be detected by your operating system.

4.2. Driver Installation

For full customization and advanced features, it is recommended to install the dedicated CAROTMAS driver software or use the web driver. Refer to the official CAROTMAS website for the latest driver download and installation instructions.

- The driver allows for precise adjustment of actuation points, RGB lighting effects, and key remapping.
- Ensure your computer is connected to the internet during driver installation.

5. OPERATING INSTRUCTIONS

5.1. Rapid Trigger and Actuation Point Adjustment

The MARS68 PRO features rapid trigger technology, allowing keys to actuate and reset based on movement rather than a fixed point. The actuation point can be adjusted for each key.

アクチュエーションポイント0.01mm 0デッドゾーン調整可能

高速トリガー、瞬時の制御、勝負の瞬間を逃さない



Image 3: Precision actuation point adjustment capability.

- Use the CAROTMAS driver software to access the actuation point settings.
- Adjust the actuation point for individual keys or groups of keys from 0.01mm to 3.50mm.
- Experiment with different settings to find your preferred responsiveness for various applications or games.
- The keyboard supports 0 deadzones, ensuring immediate input registration upon key movement.



Image 4: Demonstrating the keyboard's minimal input delay.

5.2. RGB Backlight Customization

The MARS68 PRO features per-key RGB backlighting, allowing for extensive visual customization.



フルカラーARGB

独立ICによる500Hzのリフレッシュレート

各LEDランプには独立したチップを搭載し、リフレッシュレートは最大500Hzに対応。これにより、ちらつきが抑えられ、目に優しい照明効果を提供。

Image 5: Customizable RGB backlighting.

- Utilize the CAROTMAS driver software to select from various preset lighting effects or create your own custom patterns.
- Adjust brightness, speed, and color for individual keys or zones.
- The keyboard's independent ICs support a 500Hz refresh rate for smooth lighting transitions.

5.3. Hot-Swapping Switches

The MARS68 PRO supports hot-swappable magnetic switches, allowing you to change switches without soldering.

全キー磁気スイッチ交換可能

適合する磁気スイッチを交換可能。

複数のスイッチタイプに対応し、カスタマイズ性を向上。

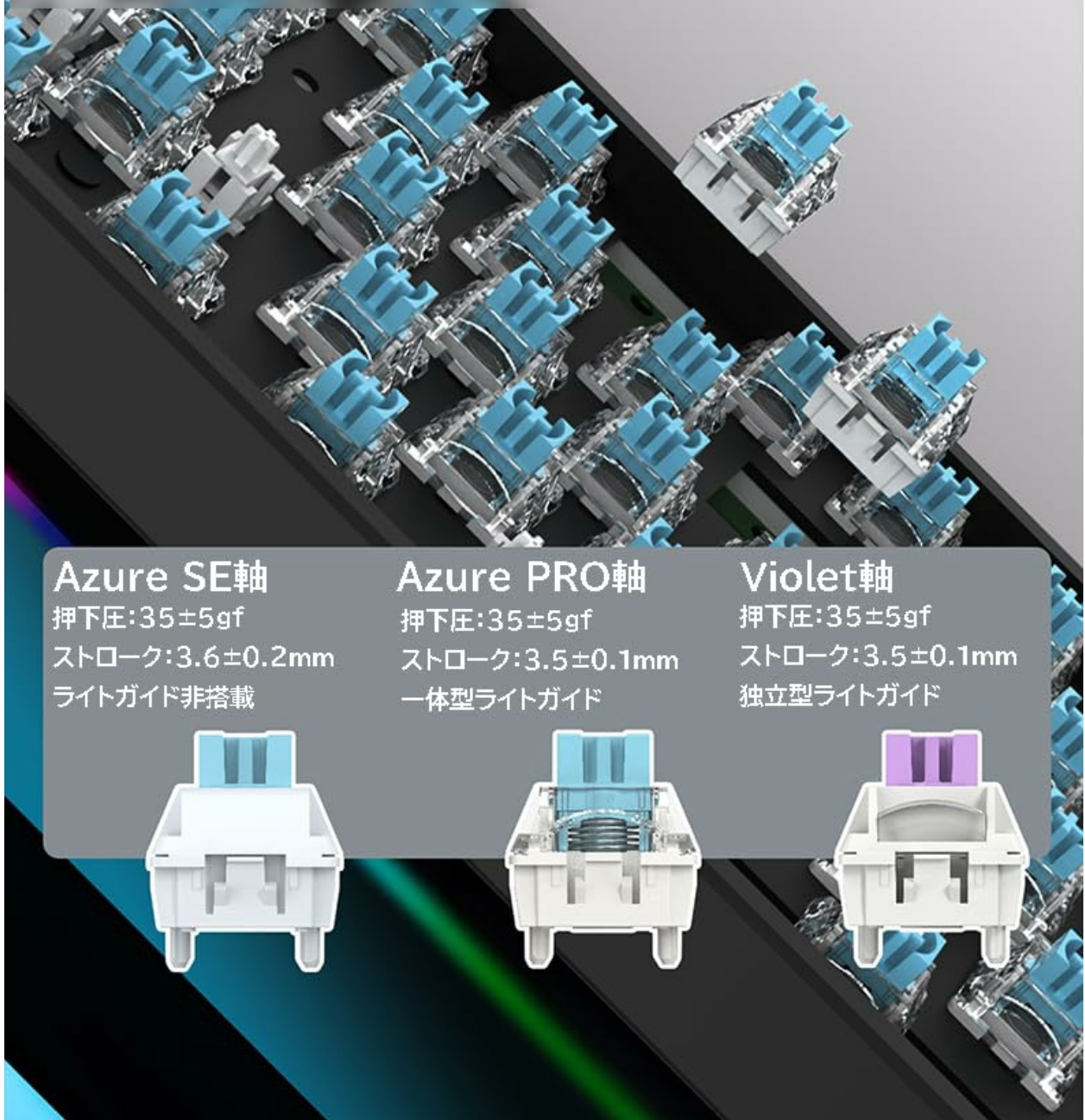


Image 6: Different types of hot-swappable magnetic switches.

1. Power off or disconnect the keyboard from your computer.
2. Use the provided keycap puller to carefully remove the keycap from the switch you wish to replace.
3. Use the switch puller (not included, but often comes with replacement switches) to gently pull the switch

straight up from the PCB.

4. Align the pins of the new magnetic switch with the holes on the PCB and press it firmly into place until it clicks.
5. Replace the keycap.
6. Reconnect the keyboard and test the new switch.

Caution: Ensure the switch pins are straight before insertion to avoid bending or damaging them. Only use compatible magnetic switches.

5.4. Key Remapping and Macros

The CAROTMAS driver software allows you to remap keys and create custom macros for enhanced productivity and gaming performance.

- Open the driver software and navigate to the key assignment or macro section.
- Select the key you wish to remap or assign a macro to.
- Follow the on-screen instructions to configure your desired function or macro sequence.
- Save your changes to apply them to the keyboard.

6. MAINTENANCE

6.1. Cleaning the Keyboard

Regular cleaning helps maintain the keyboard's performance and appearance.

- Disconnect the keyboard from your computer before cleaning.
- Use a soft brush or compressed air to remove dust and debris from between the keycaps.
- For stubborn dirt, gently wipe the keycaps and chassis with a slightly damp, lint-free cloth. Avoid excessive moisture.
- Do not use harsh chemicals or abrasive cleaners, as they may damage the keyboard's finish or keycap legends.

6.2. Switch Care

While magnetic switches are durable, proper care can extend their lifespan.

- Avoid spilling liquids on the keyboard. If a spill occurs, immediately disconnect the keyboard and allow it to dry completely before reconnecting.
- When hot-swapping switches, ensure you use the correct tools and apply even pressure to prevent damage to the switch housing or PCB sockets.

7. TROUBLESHOOTING

If you encounter issues with your MARS68 PRO keyboard, refer to the following troubleshooting steps:

- **Keyboard not responding:**
 - Ensure the USB cable is securely connected to both the keyboard and the computer.
 - Try connecting the keyboard to a different USB port on your computer.
 - Restart your computer.
- **Keys not registering or double-typing:**
 - Check for any debris under the keycap or around the switch.

- If hot-swapped, ensure the switch is fully seated in its socket.
- Update the keyboard driver software to the latest version.
- Adjust the actuation point settings in the driver software.

- **RGB lighting not working or incorrect:**

- Ensure the driver software is installed and running.
- Check lighting settings within the driver software.
- Verify that the keyboard's firmware is up to date.

- **Driver software not detecting keyboard:**

- Reinstall the driver software.
- Ensure your operating system is up to date.
- Temporarily disable any antivirus or firewall software that might be interfering.

If the issue persists after trying these steps, please contact CAROTMAS customer support for further assistance.

8. SPECIFICATIONS

The following table outlines the technical specifications for the CAROTMAS MARS68 PRO keyboard:

製品パラメータ

製品名	Mars68 SE	Mars68	Mars68 Pro
カラー	黒/白		
キー数	68キー		
タイプ	有線		
ポーリングレート	8000Hz		
RT精度	0.01mm		
遅延	0.125ms		
サンプリングレート	64kHz		
0デッドゾーン	対応		
軸	Azure SE磁気軸	Azure Pro磁気軸	Violet磁気軸
ホットスワップ	対応		
ライト	非搭載	ARGB	
ライトの位置	非搭載	下部	
キーキャップ	ABS刻印	ABS側面刻印	PBT側面刻印
ドライバー	WEBドライバー/専用ドライバー		
プレート	金属プレート		FR4プレート
内部パディング	非搭載	POコットン+EPDMベースコットン	

Image 7: Detailed product specifications (original in Japanese).

Feature	Specification (MARS68 PRO)
Product Name	MARS68 PRO
Color	Black / White (variant dependent)
Number of Keys	68 Keys
Connection Type	Wired (USB-C)

Feature	Specification (MARS68 PRO)
Polling Rate	8000Hz
RT Accuracy	0.01mm
Input Delay	0.125ms
Sampling Rate	64kHz
0 Deadzone	Supported
Switch Type	Magnetic Switches (e.g., Azure Pro, Violet)
Hot Swap	Supported
Lighting	ARGB
Light Position	Bottom
Keycaps	PBT Side Engraved
Driver	Web Driver / Dedicated Driver
Plate Material	FR4 Plate
Internal Padding	PO Cotton + EPDM Base Cotton
Compatible Devices	PC
Special Features	Backlit, Hot-Swappable, Rapid Trigger
Item Weight	890 g

9. WARRANTY AND SUPPORT

CAROTMAS products are designed for quality and performance. For warranty information, please refer to the warranty card included with your product or visit the official CAROTMAS website. For technical support, driver downloads, or further assistance, please visit the CAROTMAS support page or contact their customer service team.

高い計算能力と高速性能を備えた フラッグシップMCUチップ搭載

高い計算能力と高速性能を備えたフラッグシップMCUを搭載し、より
高いパフォーマンスと、より快適で安定したゲーム体験を提供します

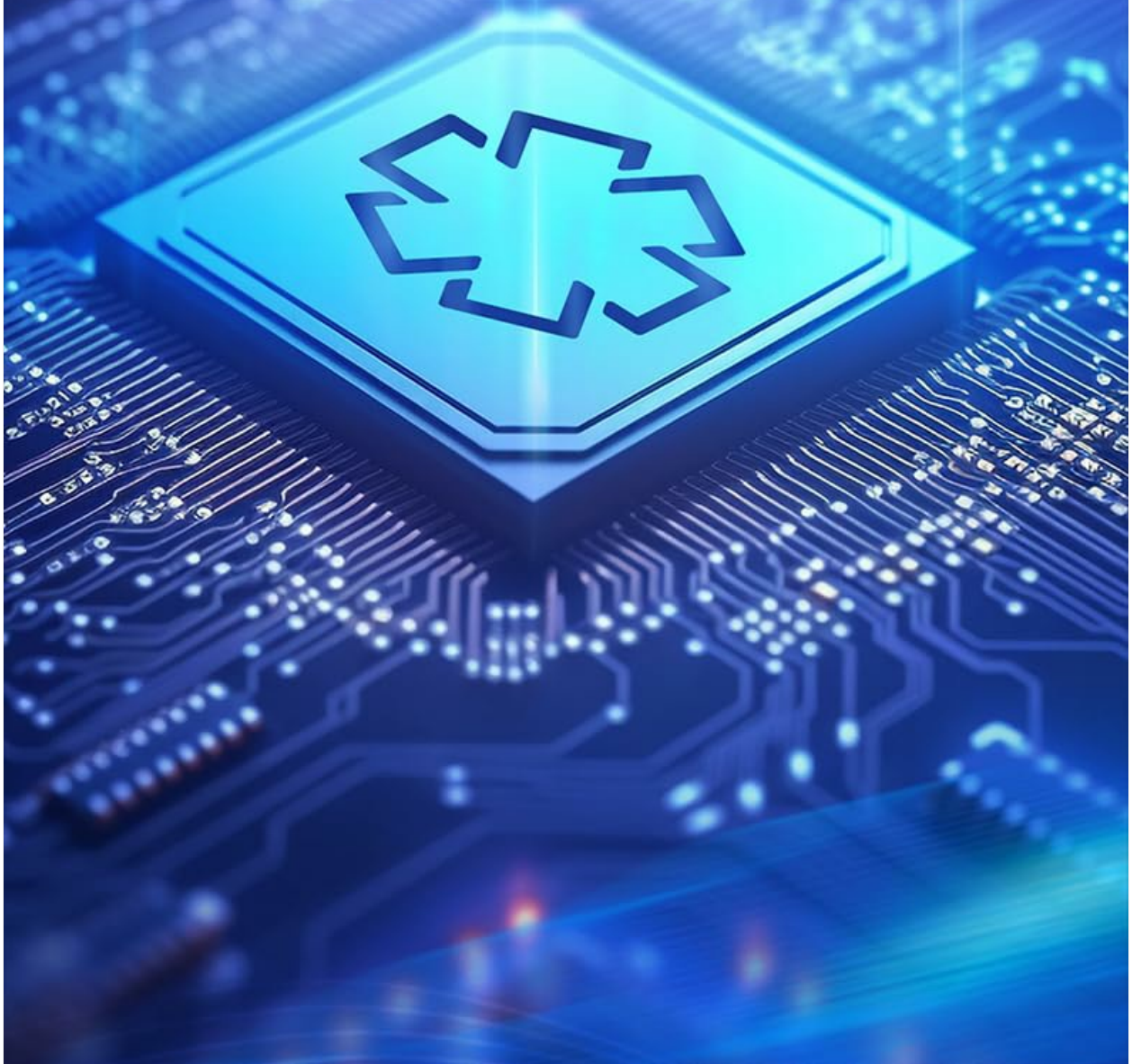


Image 8: High-performance MCU chip for advanced functionality.

