



Manuals.plus /

› **SIXWIN** /

› SIXWIN Android 13 Car Stereo with Wireless CarPlay/Android Auto for Renault Clio 3 (2005-2017)

## **SIXWIN P1=2+64G**

# **SIXWIN Android 13 Car Stereo User Manual**

Model: P1=2+64G

For Renault Clio 3rd Generation (2005-2017)

---

## **1. INTRODUCTION**

This manual provides comprehensive instructions for the installation, operation, and maintenance of your SIXWIN Android 13 Car Stereo. Please read this manual thoroughly before using the product to ensure proper functionality and safety. This unit is specifically designed for Renault Clio 3rd generation vehicles manufactured between 2005 and 2017.



Figure 1: SIXWIN Android 13 Car Stereo Main Unit

## 2. WHAT'S IN THE BOX

Verify that all components listed below are included in your package:

- 1 x Car Player + 1 x Canbus
- 1 x Power Cable + 1 x RCA Cable
- 1 x Rear Camera Input Cable + 2 x USB Cables
- 1 x GPS Antenna + 1 x Microphone
- 1 x Mounting Bracket + 1 x Screwdriver + 1 x Instruction Manual

## 2GB+64GB Android 13 Radio with CarPlay for Renault Clio 3th 2005-2017



Figure 2: Package Contents and Dimensions

### 3. SETUP AND INSTALLATION

Professional installation is recommended. Refer to the included detailed instruction manual for specific wiring diagrams and vehicle-specific installation steps. Ensure the vehicle's power is disconnected before beginning installation.

#### 3.1. Installation Overview



**Installation Display**

**After**



**Before**



Figure 3: Installation Display (Before and After)

### 3.2. Initial Power-Up and Configuration

After installation, power on the unit. The system will boot to the Android 13 interface. Navigate through the initial setup wizard to configure language, time, and network settings.



Figure 4: Android 13 Interface

## 4. OPERATING INSTRUCTIONS

### 4.1. Wireless CarPlay and Android Auto

The unit supports both Wireless CarPlay for iPhone and Wireless Android Auto for Android smartphones. Connect your phone via Bluetooth/WiFi for seamless integration. Use voice commands or the touchscreen for navigation, calls, messages, and music.

Video 1: How to connect Wireless CarPlay and Android Auto



Figure 5: Wireless/Wired Apple CarPlay



Figure 6: Wireless/Wired Android Auto

## 4.2. Mirror Link Functionality

Synchronize your smartphone screen with the car stereo display. Android phones can connect via USB/WiFi, and iOS phones via WiFi. This allows for easy video playback and app mirroring.



Figure 7: Mirror Link for Android & iOS Phones

## 4.3. GPS Navigation and WiFi

The unit features an integrated GPS receiver supporting online and offline maps for convenient navigation. Connect to WiFi or a mobile hotspot to access internet applications like YouTube, Spotify, and more.



Figure 8: GPS Navigation & WiFi

## 4.4. Bluetooth and FM/RDS Radio

Utilize the independent Bluetooth mode for hands-free calls, phone book synchronization, and music playback. The FM/RDS tuner provides real-time traffic, news, and weather updates.

## Bluetooth Hands Free



Figure 9: Bluetooth Hands-Free



Figure 10: FM/RDS Radio

### 4.5. Steering Wheel Control

Maintain full control of the car stereo without removing your hands from the steering wheel. Easily adjust radio and music settings for a safer driving experience.

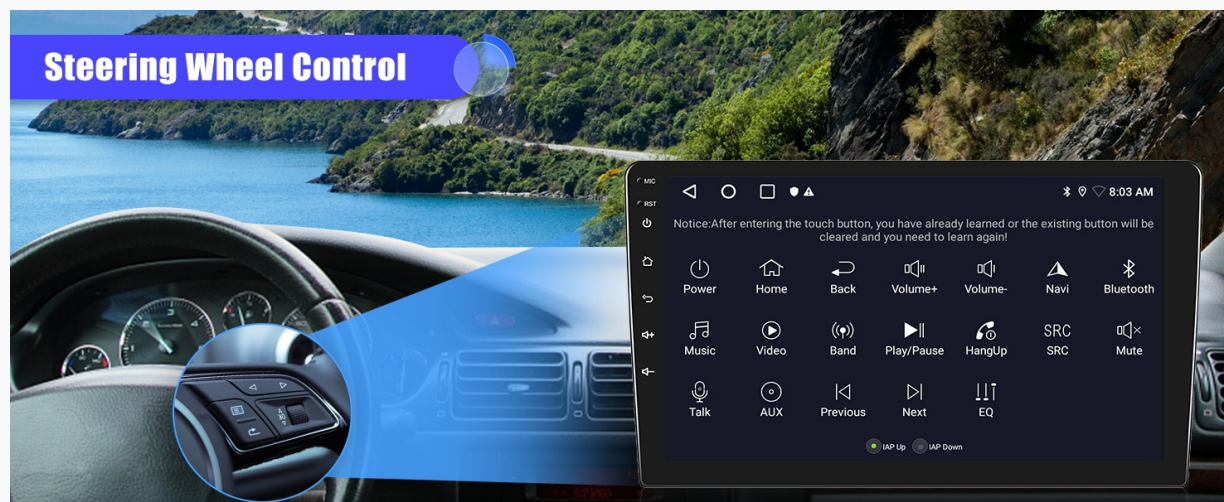


Figure 11: Steering Wheel Control Interface

### 4.6. Rear Camera Support

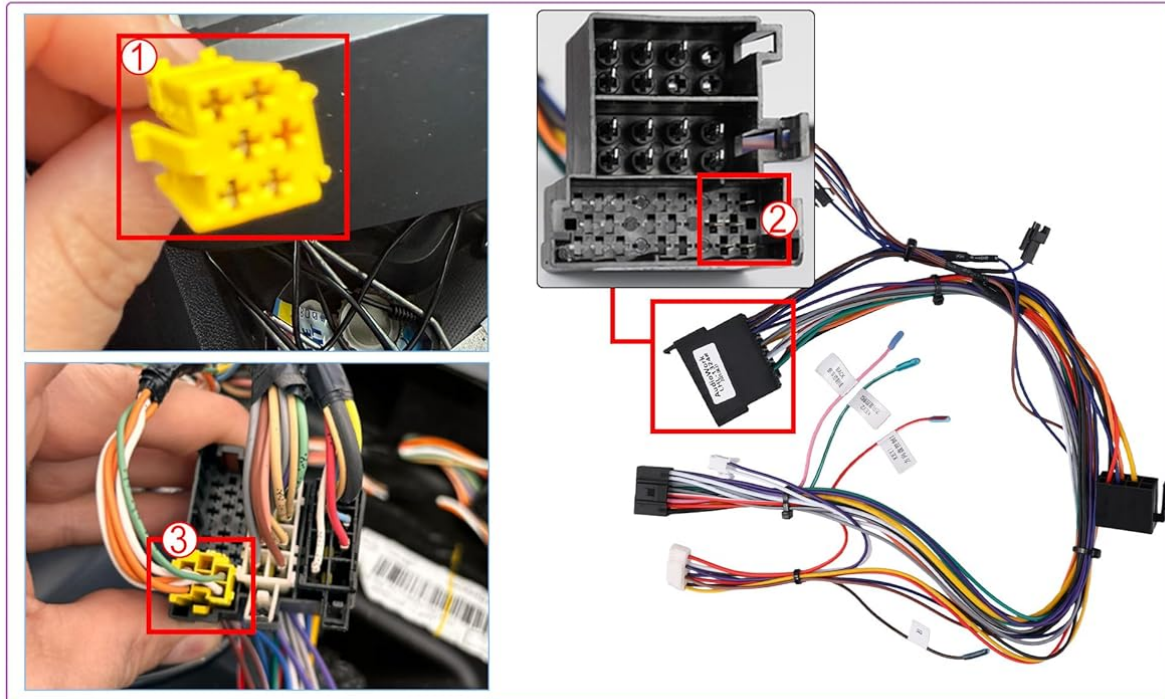
The included HD reversing camera activates automatically when the vehicle is put into reverse, providing a clear, wide-angle view for safer parking. The camera is built with IP67 waterproof protection.

# PLEASE NOTE

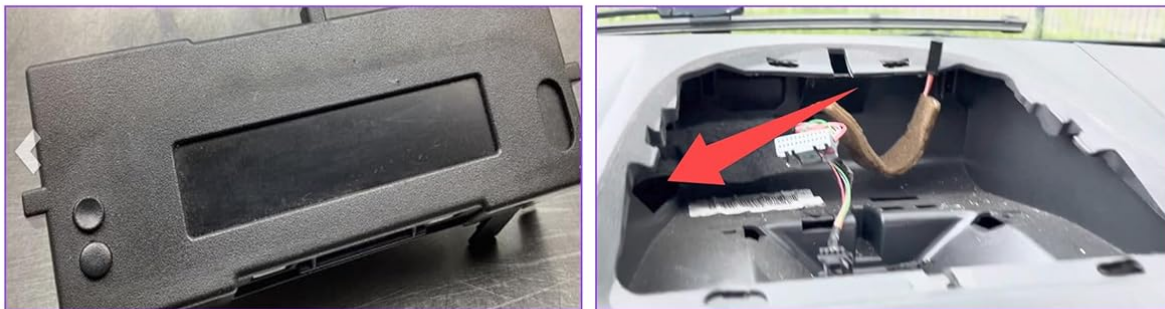


**If you encounter the car steering wheel buttons not working, please follow the steps below to restore normal use of the steering wheel buttons.**

Step 1: Please insert the small end of your original vehicle's Line 1 into our Line 2 interface, as shown in Figure 3.



Step 2: After removing the small screen from your original vehicle, reconnect the corresponding cables and then put the small screen back into your car.



Step 3: Selecting the protocol path: Hiworld/Renault/clio3

Figure 12: Rear Camera View

## 5. MAINTENANCE

To ensure the longevity and optimal performance of your car stereo, keep the screen clean using a soft, dry cloth. Avoid using harsh chemicals or abrasive materials. Regularly check for software updates to enhance functionality and security. Ensure all cables are securely connected.

## 6. TROUBLESHOOTING

### 6.1. Steering Wheel Control Issues

If your car's steering wheel buttons are not functioning correctly after installation, follow these steps:

1. Keep your original car's small screen properly connected. Do not remove the original small screen from your

vehicle.

2. Connect the small yellow connector A (from the car) to B (on the power harness).
3. Select the protocol as follows:
  - 1) Navigate to: [Settings] -> [Factory Settings] (Password: 000000)  
-> Select [Protocol Settings]
  - 2) Select the corresponding protocol in this order:
    - Manufacturer: **Hiword**
    - Car Series: **Renault-Dacia**
    - Car Model: **Clio3**

## Troubleshooting Steering Wheel Control Issues

If the steering wheel controls in your Renault vehicle are not functioning properly, please follow the steps below.

1. Please keep your original car's small screen properly connected. Do not remove the original small screen from your vehicle.



2. Connect the small yellow connector A (from the car) to B (on the power harness).

3. Select the protocol as follows:

1) Navigate to: [Settings] -> [Factory Settings] (Password: **000000**)  
-> Select [Protocol Settings]

2) Select the corresponding protocol in this order:

- Manufacturer: **Hiword**
- Car Series: **Renault-Dacia**
- Car Model: **Clio3**

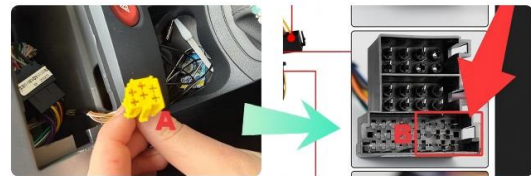


Figure 13: Troubleshooting Steering Wheel Control Issues

### 6.2. General Troubleshooting

For other issues, refer to the comprehensive troubleshooting section in the full instruction manual provided with your product. Ensure all connections are secure and the device has sufficient power. If problems persist, contact customer support.

## 7. SPECIFICATIONS

Feature	Detail
Brand	SIXWIN
Model Number	P1=2+64G
Operating System	Android 13
RAM + ROM	2GB (RAM) + 64GB (ROM)
Screen Size	9 Inches
Screen Resolution	1024*600
Processor	4 Core
Connectivity Technology	Bluetooth, Wi-Fi
Special Features	Integrated Bluetooth, Wireless/Wired CarPlay, Wireless/Wired Android Auto, GPS, WiFi
Compatible Devices	iOS Smartphones, Android Smartphones
Audio Output Mode	Stereo
Surround Sound Channels	5.1
Video Encoding	H.264, MPEG-4, others
Internet Applications	YouTube, Spotify
Control Method	Touch
Audio Output Type	RCA, Bluetooth, FM/RDS
Supported Formats	AVI, WAV, WMA
Item Weight	1.57 Kilograms
Country of Origin	China

## 8. WARRANTY AND SUPPORT

Your SIXWIN Car Stereo comes with a **2-year warranty** and a **30-day return policy**. We offer **24-hour customer service** to assist with any inquiries or issues.

For further assistance or to obtain a digital copy of the user manual, please contact our support team at: [SIXWINVIP@126.com](mailto:SIXWINVIP@126.com)