



[Manuals.plus](#) /

> [ATOTOMOVE](#) /

> ATOTOMOVE CarWave CB4DT Wireless CarPlay AI Box and OBD2 Scanner User Manual

ATOTOMOVE CB4DT

ATOTOMOVE CarWave CB4DT Wireless CarPlay AI Box and OBD2 Scanner User Manual

Model: CB4DT

1. INTRODUCTION

The ATOTOMOVE CarWave CB4DT is a multifunction car smart box designed to enhance your in-car entertainment and connectivity. It transforms your vehicle's wired CarPlay or Android Auto system into a wireless experience, offering additional features such as video streaming, an integrated OBD2 scanner, and AI conversation capabilities powered by ChatGPT. This manual provides essential information for the proper setup, operation, and maintenance of your device.



Image 1.1: The ATOTOMOVE CarWave CB4DT Wireless Multifunction Car Smart Box.

2. PACKAGE CONTENTS

Please verify that all items are present in the package:

- ATOTOMOVE CarWave CB4DT Wireless CarPlay AI Box
- AC-4450 Bluetooth OBD II Car Diagnostic Scanner
- USB C-to-C cable
- USB A-to-C cable
- USB A - Type A Y-shaped Cable
- USB C-to-A adapter

ATOTOMOVE **CarWave CB4DT** Wireless Multifunction Car Smart Box

Compatibility

98%



- Compatible with iPhone 6 or newer (iOS10.0+)
- Android 11.0+;
Also useful for Google/Samsung phones with Android 10.0+, Galaxy S8/S8+/Note 8 with Android 9.0+

Car Stereos that Comes with:

- ✓ Only wired CarPlay
- ✓ Only wired Android Auto
- ✓ Both wired CarPlay and wired Android Auto
- ✓ Both wired CarPlay and wireless Android Auto
- ✓ Both wireless CarPlay and wired Android Auto (You must press and hold the 'Reset' button to switch to Android Auto)
- ✗ Only Wireless CarPlay or Only Wireless Android Auto

Note: To ensure that your cars are compatible, please read the product details or con-tact product-care team.

Image 2.1: Overview of the device and included cables.

3. SETUP INSTRUCTIONS

Follow these steps to set up your CarWave CB4DT:

1. **Compatibility Check:** Ensure your car stereo supports wired CarPlay or wired Android Auto. The CB4DT is compatible with iPhone 6 or newer (iOS 10.0+) and Android 11.0+ (or Android 9.0+ for Google/Samsung phones like Galaxy S8/S8+/Note 8). It does not support vehicles with only wireless CarPlay or only wireless Android Auto.
2. **Connect the Device:** Plug the CB4DT into your car's USB port that supports wired CarPlay or Android Auto. Use the appropriate USB cable (C-to-C or A-to-C) provided. For some car models, if stable operation is not achieved, use the Y-shaped cable and USB C-to-A adapter to boost power from two USB ports.
3. **Initial Boot-up:** Once connected, the device will power on and display its interface on your car's screen.
4. **Pair Your Phone:** On your smartphone, enable Bluetooth and Wi-Fi. Connect to the CB4DT's Bluetooth. The Wi-Fi connection will establish automatically.
5. **Access CarPlay/Android Auto:** After successful pairing, you can operate wireless CarPlay or Android Auto directly from your car's screen.

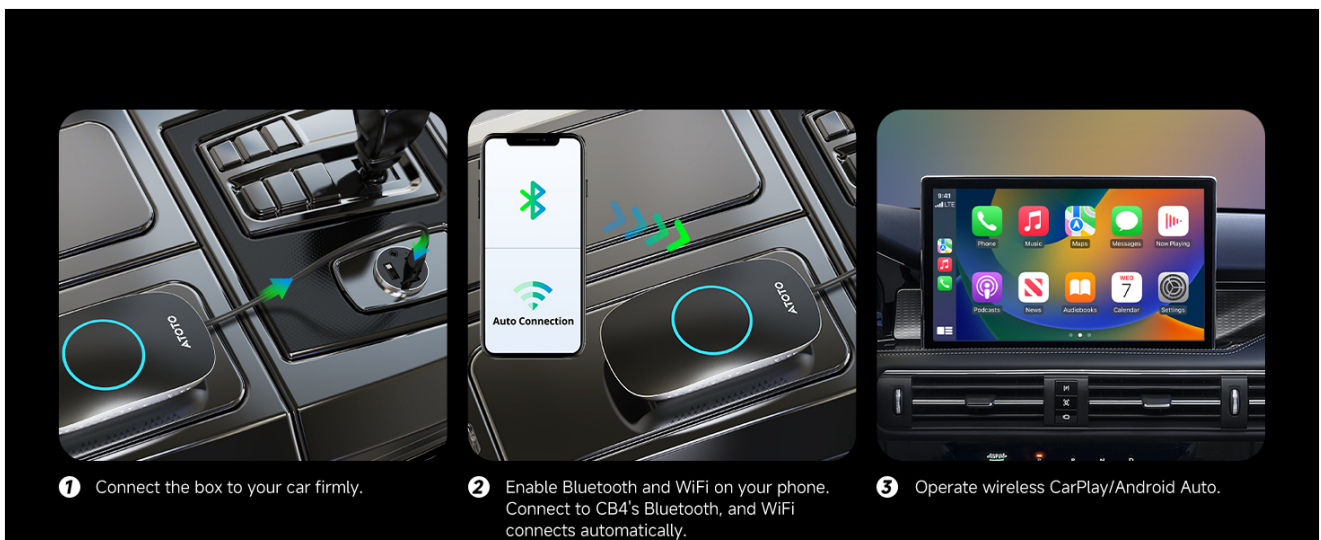


Image 3.1: Visual guide for connecting the CB4DT to your car and phone.

GenAI Assistant - DriveChat ChatGPT Power



Image 3.2: Compatibility details for various car stereos and phone operating systems.

4. OPERATING INSTRUCTIONS

4.1 Wireless CarPlay and Android Auto

The CB4DT automatically connects to your phone for wireless CarPlay or Android Auto after initial setup. The system defaults to the CarPlay channel. To prioritize the Android Auto channel, press and hold the 'Reset' button on the device to switch.



Image 4.1: Instructions for switching between CarPlay and Android Auto using the reset button.

4.2 DriveChat (ChatGPT Integration)

The CB4DT features DriveChat, a GenAI app powered by ChatGPT, providing AI conversations. This allows for interactive voice commands and information retrieval while driving. Ensure you have set up a free account and installed the necessary app on your phone to utilize this feature.

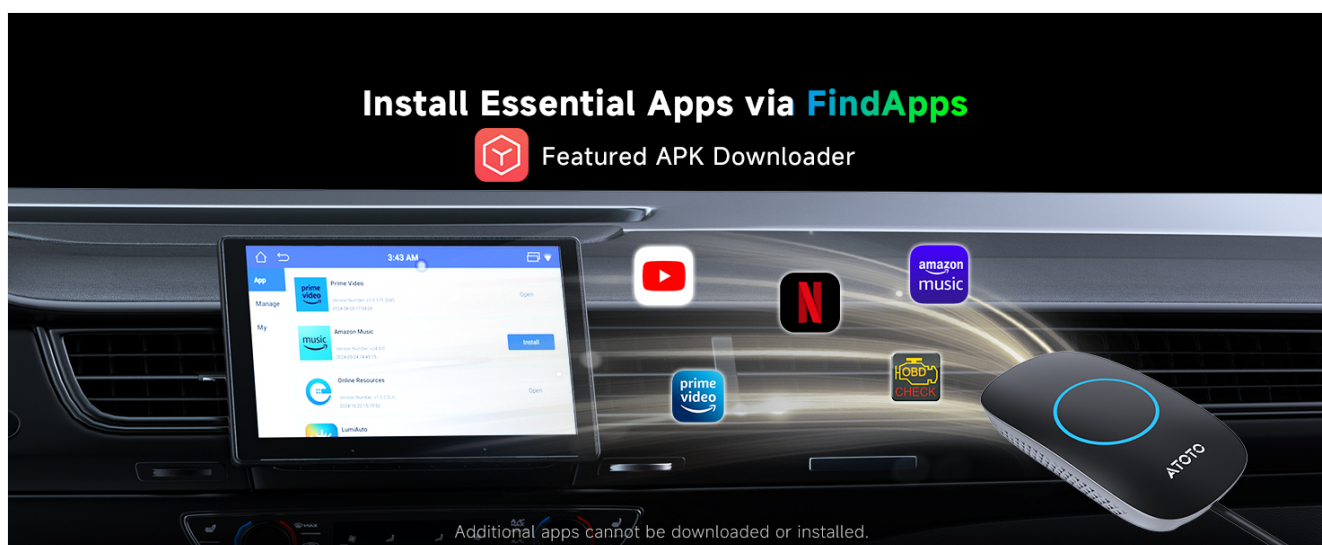


Image 4.2: DriveChat interface demonstrating AI conversation capabilities.

4.3 App Installation via FindApps

The device supports popular streaming applications like YouTube and Netflix directly through the FindApps store. Use FindApps to install and manage these applications. Note that additional market apps beyond those available in FindApps

cannot be downloaded or installed.



Image 4.3: The FindApps interface for installing supported applications.

4.4 HDMI Output

The CB4DT includes an HDMI output module, allowing you to mirror media playing on the car stereo to passenger screens and rear headrest screens. Connect an HDMI cable from the device to your external display.



Image 4.4: The HDMI output port and its function for connecting to external displays.

4.5 Dual WiFi Connectivity

The device features dual WiFi modules, enabling you to stay internet-connected while simultaneously using CarPlay or Android Auto. This ensures uninterrupted entertainment alongside navigation and calls.



Image 4.5: Illustration of dual WiFi modules providing simultaneous internet access and wireless CarPlay/Android Auto.

4.6 Bluetooth Lock/Unlock

The Bluetooth Lock/Unlock feature allows for enhanced security and control over your screen access. When enabled, the screen can be locked or unlocked via Bluetooth connection to your paired smartphone.



Image 4.6: Visual representation of the Bluetooth Lock/Unlock functionality.

5. OBD2 SCANNER USAGE

The included AC-4450 Bluetooth OBD II Car Diagnostic Scanner allows you to monitor your vehicle's performance and diagnose issues directly on your car's screen.

1. **Connect the Scanner:** Locate your vehicle's OBD II port (typically under the dashboard) and plug in the AC-4450 scanner.
2. **Pair with CB4DT:** On the CB4DT interface, navigate to the Bluetooth settings and pair with the AC-4450 scanner.
3. **Access OBD II App:** Open the dedicated OBD II application on the CB4DT.
4. **Monitor Data:** You can now view various diagnostic data, including:
 - Read Codes: Retrieve diagnostic trouble codes (DTCs).
 - Performance Test: Monitor engine performance metrics.
 - Live Data Stream: View real-time sensor data.
 - Real-time Monitor: Continuous monitoring of key parameters.
 - On-Board Monitoring Test: Check the status of emission-related components.



Image 5.1: The AC-4450 OBD II Diagnostic Scanner and its functions displayed on the car screen.

6. MAINTENANCE

6.1 Software Updates (OTA)

The CB4DT supports Firmware Over-The-Air (OTA) updates to ensure your device and its applications remain up-to-date with the latest features and improvements. Regularly check for and install available updates through the system settings.

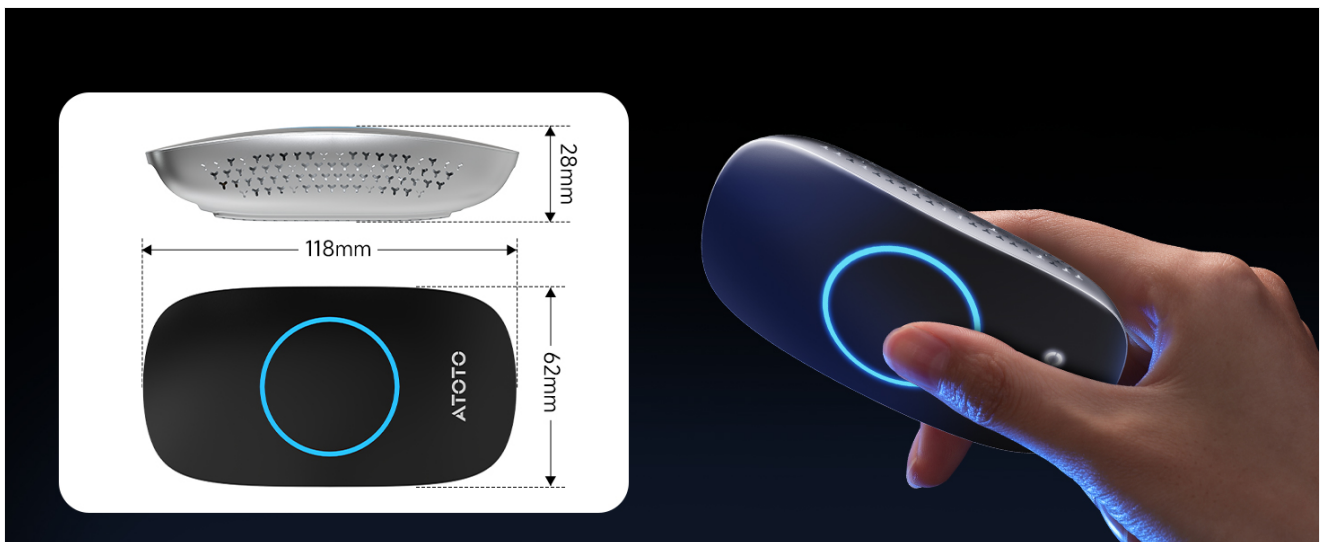


Image 6.1: The system update screen for OTA updates.

6.2 General Care

To ensure the longevity of your device, keep it clean and free from dust and moisture. Avoid exposing it to extreme temperatures or direct sunlight for prolonged periods. Disconnect the device when not in use for extended periods.

7. TROUBLESHOOTING

If you encounter issues with your CB4DT, refer to the following common solutions:

- **No Power/Device Not Starting:**
 - Ensure the USB cable is securely connected to both the device and the car's USB port.
 - Try using the Y-shaped cable to provide additional power if your car's USB port does not supply sufficient current.

- Test with a different USB port in your vehicle if available.

- **Wireless CarPlay/Android Auto Not Connecting:**

- Verify that Bluetooth and Wi-Fi are enabled on your smartphone and paired with the CB4DT.
- Ensure your car stereo supports *wired* CarPlay or Android Auto, as the device converts wired to wireless.
- Restart both your phone and the CB4DT (by unplugging and replugging).

- **Lag or Slow Performance:**

- Ensure the device's firmware is up-to-date via OTA updates.
- Close unnecessary applications running in the background on the CB4DT.
- Check for strong Wi-Fi signal if streaming content.

- **OBD2 Scanner Not Connecting:**

- Ensure the OBD II scanner is firmly plugged into the vehicle's OBD II port.
- Verify that the scanner is paired via Bluetooth to the CB4DT.
- Confirm your vehicle supports the OBD II standard.

If these steps do not resolve the issue, please contact ATOTOMOVE customer support.

8. SPECIFICATIONS

| Feature | Detail |
|--------------------|--|
| Model Number | CB4DT-BK-S01 |
| Processor | Quad-core ARM A53 |
| RAM | 4GB |
| ROM | 32GB |
| Operating System | Android 12 |
| Expandable Storage | Up to 256GB via USB drive (not included) |
| Connectivity | Bluetooth, Dual Wi-Fi, USB, HDMI |
| Ports | 3 (USB, HDMI) |
| Dimensions | 6.38 x 6.14 x 1.42 inches (Package) |
| Item Weight | 10.2 ounces |

9. WARRANTY AND SUPPORT

9.1 Product Warranty

ATOTOMOVE provides a 12-month warranty with an additional 6-month extension, totaling 18 months of coverage for your CarWave CB4DT. This warranty covers manufacturing defects and ensures product reliability.

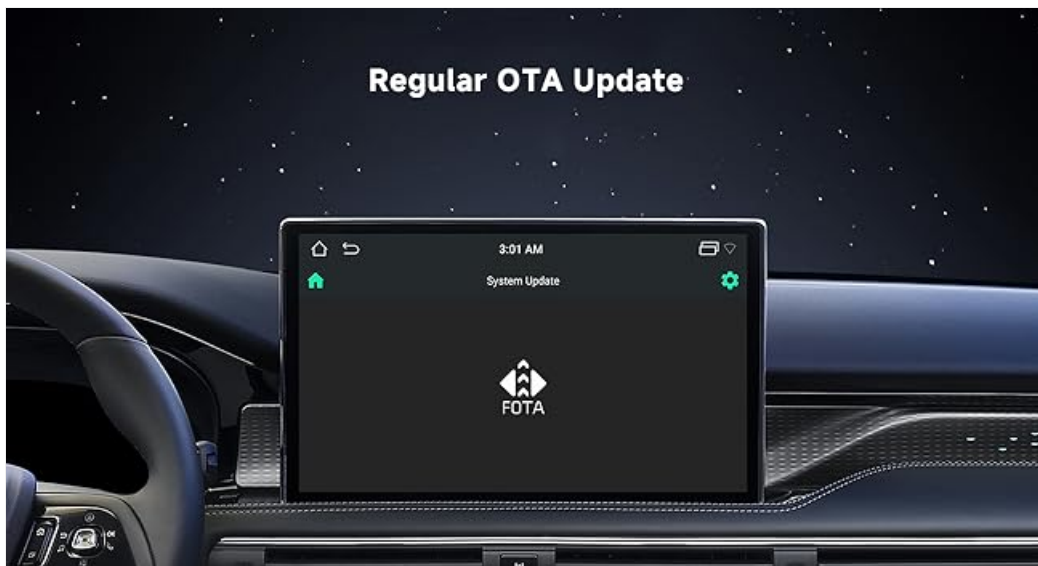


Image 9.1: Warranty information indicating 12+6 months coverage.

9.2 Customer Support

For any questions, technical assistance, or warranty claims, please utilize the online self-service support. Our product care experts are available to handle and reply to any issues you encounter within 24 hours.

- **Online Support:** Visit eproductcare.com or your order center.
- **Email Support:** support@atotoglobal.com



Image 9.2: Information on how to seek help and support.