

eufy Security T8E00

eufy PoE NVR Security Camera System S4 User Manual

Model: T8E00

1. INTRODUCTION

This manual provides detailed instructions for the installation, operation, and maintenance of your eufy PoE NVR Security Camera System S4. This system includes a Network Video Recorder (NVR), two Bullet-PTZ cameras, and two Turret cameras, designed for comprehensive 24/7 surveillance.

The system features 4K UHD resolution, 360° PTZ capabilities on Bullet-PTZ cameras, AI-powered auto-framing and tracking, smart video search, and color night vision. It is a wired Power over Ethernet (PoE) system, ensuring stable connectivity and continuous recording.



Image 1.1: Overview of the eufy PoE NVR Security Camera System S4 components.

2. PACKAGE CONTENTS

Verify that all items listed below are included in your package. If any items are missing or damaged, please contact eufy support.

- 1 x Network Video Recorder S4
- 2 x PoE Cam S4 (Bullet-PTZ)
- 2 x PoE Cam E41 (Turret)
- 4 x 59ft/18m Ethernet Cable
- 1 x 3.3ft/1m Ethernet Cable
- 1 x HDMI Cable
- 1 x Power Adapter
- 1 x USB Mouse
- 4 x Waterproof Cover Pack
- 4 x Mounting Bracket
- 4 x Screw Pack
- 1 x Quick Start Guide

3. SYSTEM COMPONENTS OVERVIEW

3.1 Network Video Recorder (NVR) S4

The NVR S4 is the central hub for your security system. It manages camera feeds, stores recordings on its pre-installed 2TB HDD (expandable up to 16TB), and provides connectivity for viewing and control.



Image 3.1: The NVR S4 providing 24/7 local security with live view on a display.

3.2 Bullet-PTZ Camera S4

The Bullet-PTZ camera combines a fixed 4K UHD wide-angle lens with a 2K PTZ (Pan-Tilt-Zoom) lens. This dual-lens design allows for both a broad overview and detailed tracking of subjects. It features 360° pan, 70° tilt, and 8x hybrid zoom.

2-in-1 Bullet-PTZ PoE Cam

Full Picture. Clear Details.

Bullet Cam

4K UHD
Surveillance

122° FOV

180°



30°

PTZ Cam

Dual 2K PTZ

360° Pan

8x Zoom

360°



70°

Note: The 16 MP total resolution is achieved by combining the pixel counts of the three individual lenses.

Image 3.2: Detailed view of the 2-in-1 Bullet-PTZ PoE Camera capabilities.

3.3 Turret Camera E41

The Turret camera provides 4K Ultra HD resolution with a 122° field of view. It is designed for fixed zone monitoring and offers color night vision and AI detection. It is IP67 weatherproof for reliable outdoor use.



Image 3.3: Bullet-PTZ Cam and Turret Cam for versatile coverage.

4. SETUP AND INSTALLATION

The eufy PoE NVR Security Camera System S4 is designed for plug-and-play installation. A single Ethernet cable provides both power and video transmission for each camera.

4.1 NVR Connection

1. Connect the NVR to a power source using the provided power adapter.
2. Connect the NVR to your router using the included 3.3ft/1m Ethernet cable.
3. Connect the NVR to a monitor or TV using the HDMI cable for initial setup and local viewing.
4. Connect the USB mouse to the NVR for navigation.

4.2 Camera Installation

Before permanent installation, test camera placement by temporarily connecting them to the NVR.

1. Choose suitable locations for your cameras. Bullet-PTZ cameras are ideal for front yards, backyards, and corners, while Turret cameras are suitable for indoor and backyard monitoring.
2. Mount the cameras using the provided mounting brackets and screws. Ensure the mounting surface is stable.
3. Connect each camera to the NVR using the 59ft/18m Ethernet cables. These cables provide both power and data.
4. Use the waterproof cover packs for outdoor Ethernet connections to protect against weather elements.

Plug and Play Installation

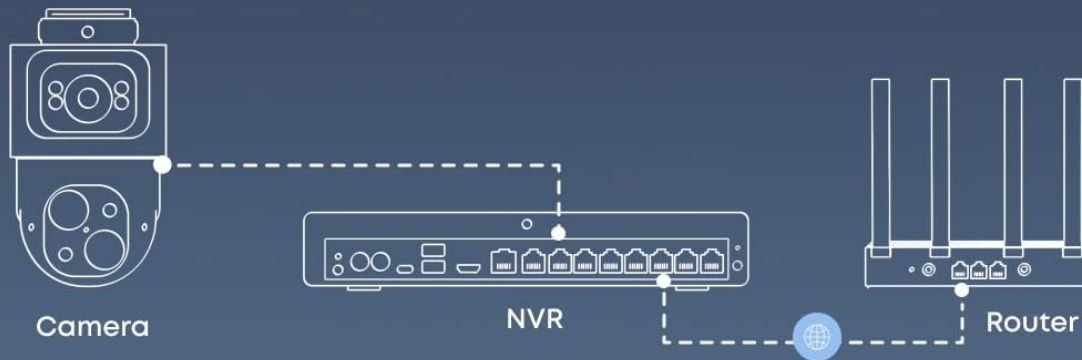


Image 4.1: Plug and Play Installation diagram showing camera, NVR, and router connections.

4.3 App Setup

To ensure smooth operation, update your eufy Security app to the latest version (iOS V5.0.70/Android V5.0.71 or above).

1. Download the eufy Security app from your device's app store.
2. Create an account or log in.
3. Follow the in-app instructions to add your NVR system. This typically involves scanning a QR code on the NVR

or entering its serial number.

4. Once the NVR is added, the connected cameras will automatically appear in the app.

5. OPERATING YOUR SYSTEM

5.1 Live View and Recording

The system provides 24/7 continuous recording to the NVR's local storage. You can access live views and recorded footage via the eufy Security app, web interface, or a connected display.

- **App/Web Interface:** Open the eufy Security app or log in to the web portal to view live feeds from all cameras. You can switch between individual camera views or a multi-camera grid.
- **Local Display:** Use the connected monitor/TV and USB mouse to navigate the NVR interface for live viewing, playback, and system settings.
- **Recording Modes:** The system supports 24/7 recording, motion-activated recording, and scheduled recording. These settings can be configured via the NVR interface or the eufy Security app.

5.2 AI Features and Tracking

The Bullet-PTZ cameras offer advanced AI capabilities for enhanced surveillance.

- **AI Auto-Framing and Tracking:** When a subject is detected, the PTZ camera can automatically lock onto and track them, keeping them centered in the frame. This feature works up to 164 ft away and includes auto-zoom.
- **Live Cross-Cam Tracking:** Bullet-PTZ cameras can work in sync to provide continuous tracking. If a subject moves out of one camera's field of view, another Bullet-PTZ camera can seamlessly take over tracking.
- **Local AI Agent:** The NVR's local AI agent provides real-time analysis for threat identification. You can customize no-go zones and alerts to ensure accurate detection and tailored responses.

Auto-Framing Up to 164 ft Away



Bullet-to-PTZ
Tracking



Locks-On and
Tracks Subjects



8x Hybrid Zoom



Group Tracking

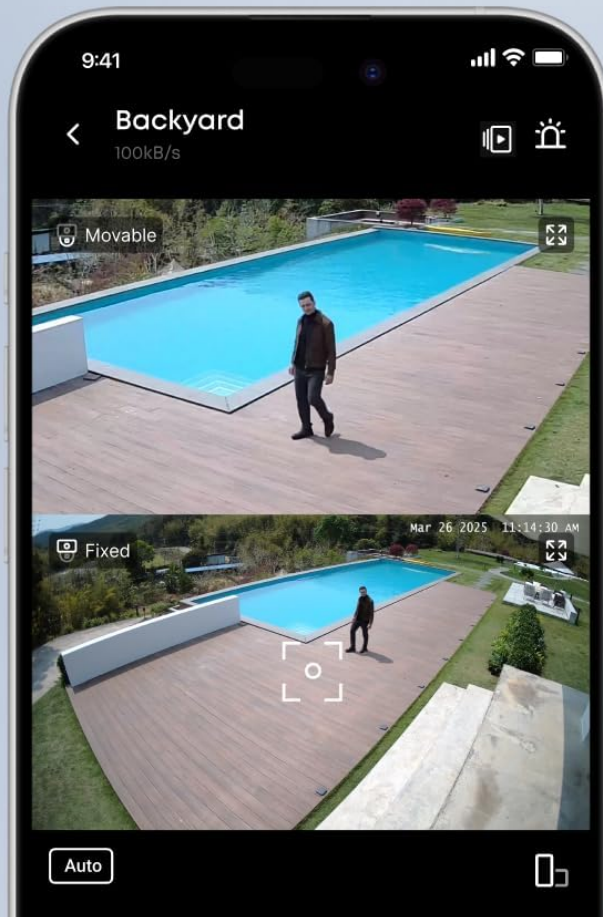


Image 5.1: Auto-Framing and Tracking in the eufy Security app.

5.3 Smart Video Search

The Smart Video Search feature allows you to quickly find specific events in your recorded footage.

- Instead of manually scrolling through hours of video, use keywords to search for events. For example, search for "person," "vehicle," or specific activities.
- This feature significantly reduces the time required to locate relevant footage.

Smart Video Search

Instead of scrolling for hours, use keywords to locate videos fast.

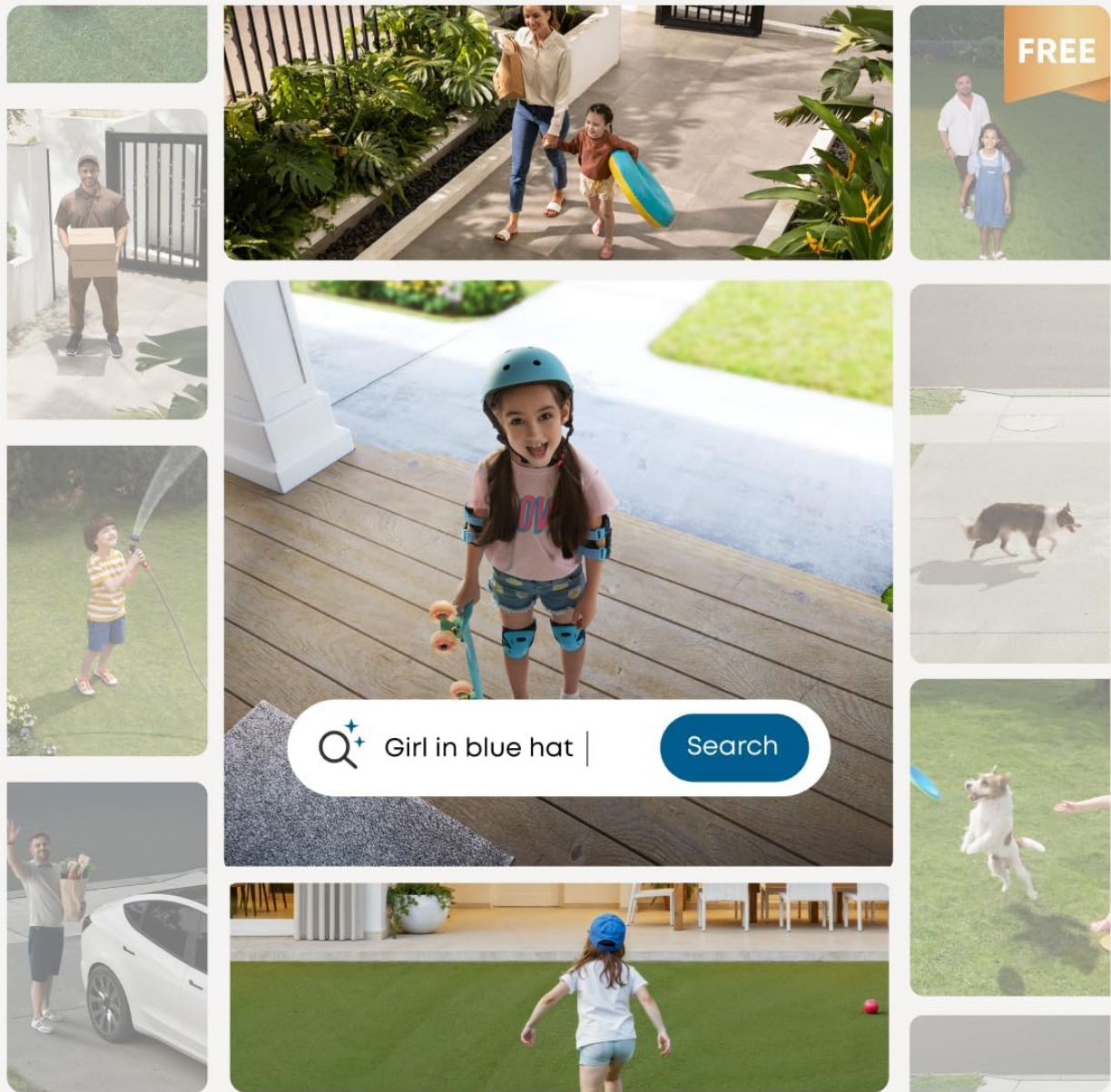


Image 5.2: Smart Video Search interface for quick event retrieval.

5.4 Night Vision

The system offers multiple night vision modes for clear visibility in low-light conditions.

- **Color Night Vision:** Utilizes built-in spotlights and advanced image processing (AI-ISP) to provide vivid color images even at night.
- **Infrared Night Vision:** Delivers crisp black-and-white visuals in complete darkness.



Image 5.3: Various night vision modes for optimal clarity.

6. MAINTENANCE

Regular maintenance ensures optimal performance and longevity of your eufy security system.

- **Clean Lenses:** Periodically clean camera lenses with a soft, dry cloth to remove dust, dirt, or smudges that may affect image quality.
- **Check Cables:** Inspect all Ethernet cables and power connections for any signs of wear, damage, or loose connections. Ensure waterproof covers are securely in place for outdoor cables.
- **Software Updates:** Regularly check for and install firmware updates for the NVR and cameras via the eufy Security app. Updates often include performance improvements, new features, and security enhancements.
- **Storage Management:** Monitor the NVR's storage capacity. The 2TB HDD provides ample space, but you can upgrade to a larger HDD (up to 16TB) if needed. The system typically overwrites the oldest footage when storage is full.
- **Environmental Protection:** Ensure cameras are installed in locations that minimize direct exposure to extreme weather conditions, even though they are weatherproof.

7. TROUBLESHOOTING

This section addresses common issues you might encounter with your eufy PoE NVR Security Camera System S4.

7.1 No Video Feed from Camera

- **Check Cable Connection:** Ensure the Ethernet cable is securely connected to both the camera and the NVR.
- **Verify NVR Port:** Confirm the NVR port is active and functioning. Try connecting the camera to a different port.
- **Power Cycle:** Disconnect and reconnect the NVR's power adapter.
- **App Update:** Ensure your eufy Security app is updated to the latest version.

7.2 Poor Image Quality

- **Clean Lens:** Clean the camera lens to remove any dirt or smudges.
- **Check Resolution Settings:** Verify that the camera's resolution is set to 4K UHD in the NVR or app settings.
- **Lighting Conditions:** Ensure adequate lighting for optimal image quality, especially at night. Adjust night vision settings if necessary.

7.3 AI Tracking Not Working

- **Firmware Update:** Ensure both the NVR and camera firmware are up to date.
- **Clear View:** Confirm there are no obstructions blocking the camera's view of the tracking area.
- **Detection Zones:** Check that detection zones and sensitivity settings are correctly configured in the app.

7.4 NVR Not Connecting to Network

- **Ethernet Cable:** Ensure the Ethernet cable connecting the NVR to the router is functional and securely connected.
- **Router Status:** Verify your router is powered on and has an active internet connection.
- **Network Settings:** Check the NVR's network settings via the local display to ensure it's configured for your network (DHCP recommended).

8. SPECIFICATIONS

Feature	Specification
Brand	eufy Security
Model Number	T8E00
Connectivity Technology	Wired (PoE)
Video Capture Resolution	4K UHD
Number of Channels	Up to 16
Memory Storage Capacity	2 TB HDD (expandable to 16 TB)
Power Source	Corded Electric
Recommended Uses	Outdoor
Operating System (App)	Android, iOS
Operating System (Web)	Windows, macOS
Low Light Technology	Streetlight Vision, Spotlight Vision, Infrared Vision
Night Vision Range	65 Feet
Frame Rate	15fps/20fps
Recording Mode	24/7 Recording, Motion Recording, Schedule Recording
Total USB Ports	3

Feature	Specification
Hardware Interface	Ethernet
Lens Type	Fixed + Zoom
Video Input	RJ45
Viewing Angle	122 Degrees
Weatherproofing	IP67 (Turret Cam), IP65 (Bullet-PTZ Cam)
Product Dimensions	13.5 x 7.13 x 17.4 inches
Item Weight	19.16 pounds
UPC	194644239794

9. WARRANTY AND SUPPORT

eufy Security provides a 3-year after-sales service for this product. Our expert support team is available 24/7 to assist with any concerns or issues you may encounter.

For technical support, warranty claims, or further assistance, please visit the official eufy Security website or contact their customer service directly. Refer to the Quick Start Guide included in your package for specific contact information.

You can also visit the [eufy Security Store on Amazon](#) for additional product information and resources.

