

[Manuals.plus](#) /

> [TG BLOCKS](#) /

> TG BLOCKS Natural World Building Set Model 1008 Instruction Manual

TG BLOCKS 1008

TG BLOCKS Natural World Building Set Model 1008 Instruction Manual

Micro Brick 3D Wall Art & Table Display

1. PRODUCT OVERVIEW

The TG BLOCKS Natural World Building Set (Model 1008) allows you to construct a detailed 3D representation of a natural scene featuring plum blossoms and butterflies using 763 micro bricks. This versatile set can be displayed as unique wall art or as a decorative table piece, adding an artistic touch to any space.



Beautiful Whether Placed or Hung!

Image 1.1: The assembled Natural World Building Set, highlighting the plum blossoms, butterflies, and the micro-block construction.

The set is designed for an immersive and relaxing building experience, suitable for individuals aged 8 and up. All components are made from high-quality, durable, and eco-friendly ABS plastic.

2. SAFETY INFORMATION

WARNING: CHOKING HAZARD - Small Parts. Not for children under 3 years.

- Keep all small parts away from young children and pets.
- Adult supervision is recommended during assembly, especially for younger builders.
- Do not ingest any parts.
- Dispose of packaging materials responsibly.

3. PACKAGE CONTENTS

Please verify that all components are present before beginning assembly:

- Natural World Building Set (763 pieces)
- Detailed Instruction Manual (physical copy)



**THE PERFECT GIFT FOR
ANY OCCASION**

4. SETUP AND ASSEMBLY

Follow the step-by-step instructions provided in the physical instruction manual included in your package. The set consists of 763 micro bricks, which are smaller than standard building blocks, requiring careful handling.

4.1 Key Assembly Tips:

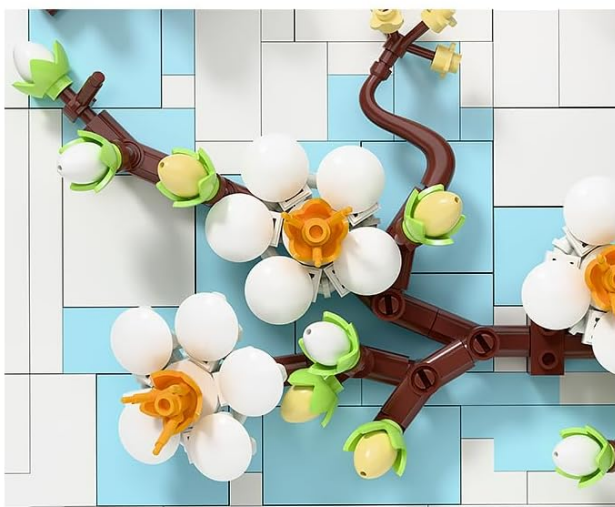
1. **Organize Pieces:** Before starting, sort the micro bricks by color and shape to facilitate easier assembly.
2. **Follow Manual:** Refer to the included detailed instruction manual for precise placement of each brick. Each step is illustrated to guide you through the construction process.
3. **Secure Connections:** Ensure each micro brick is firmly pressed into place to create a stable structure.
4. **Butterfly Wing Adjustment:** The butterfly wings can be freely positioned to create a lifelike motion effect after assembly.



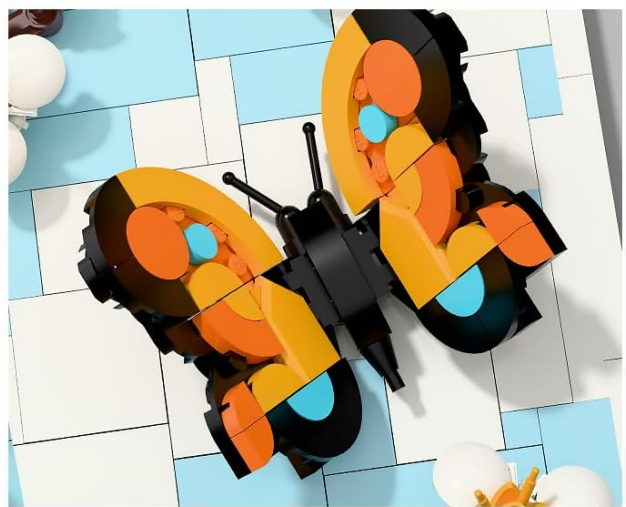
Image 4.1: Dimensions of the assembled set (7.71 x 7.99 inches) and a size comparison of TG Blocks micro bricks to standard blocks.



Brightly patterned wings and delicate textures bring the butterfly to life.



Layered petals and fresh buds capture the natural charm of plum flowers.



Freely position the butterfly's wings to create lifelike motion.

Image 4.2: Detailed view of the plum blossoms with layered petals and the butterflies with adjustable wings.

5. OPERATING AND DISPLAY

Once assembled, your Natural World Building Set can be displayed in two primary ways:

5.1 Table Display:

Place the assembled set on any flat, stable surface such as a desk, shelf, or bedside table. The sturdy base ensures it stands upright.



Image 5.1: The Natural World Building Set displayed as a table decoration.

5.2 Wall Art Display:

The set is designed to be mounted as 3D wall art. Utilize the integrated hanging clips or mounting points on the back of the base plate. Ensure the wall fixture used is appropriate for the weight of the set (approximately 12.6 ounces).



Image 5.2: Demonstrating the set being mounted as 3D wall art.



Image 5.3: The versatility of the set, suitable for both wall mounting and table display.

6. MAINTENANCE

To keep your Natural World Building Set in optimal condition:

- **Cleaning:** Gently dust the set with a soft, dry cloth or a soft brush. For more stubborn dirt, a slightly damp cloth can be used, but avoid excessive moisture.
- **Storage:** If disassembling for storage, keep all micro bricks in a sealed container to prevent loss and damage.

- **Avoid Direct Sunlight:** Prolonged exposure to direct sunlight may cause colors to fade over time.

7. TROUBLESHOOTING

7.1 Missing Pieces:

If you find any pieces missing, please double-check the packaging and surrounding area. Due to the small size of micro bricks, they can be easily overlooked. If pieces are still missing, contact customer support.

7.2 Difficulty Connecting Bricks:

Ensure that the bricks are aligned correctly before applying pressure. Micro bricks require precise alignment. If a brick feels too tight, try rotating it or checking for any obstructions.

7.3 Instability of the Model:

Review the assembly steps to ensure all connections are firm. Loose connections can lead to instability. Pay particular attention to the base and any structural support elements.

8. SPECIFICATIONS

Feature	Detail
Model Number	1008
Number of Pieces	763 Micro Bricks
Product Dimensions (Assembled)	7.71 x 7.99 x 0.16 inches (19.6 x 20.3 x 0.4 cm)
Item Weight	12.6 ounces
Material	High-quality, durable, eco-friendly ABS plastic
Recommended Age	8 years and up
Manufacturer	Guangdong Tiangao Interactive Technology Co., Ltd.

9. WARRANTY INFORMATION

Specific warranty details for the TG BLOCKS Natural World Building Set are not provided in this manual. For information regarding product warranty, returns, or replacements, please refer to the retailer's policy where the product was purchased or contact the manufacturer directly.

10. CUSTOMER SUPPORT

For further assistance, questions, or to report any issues with your TG BLOCKS Natural World Building Set, please contact the seller or manufacturer through their official channels. You may find contact information on the product packaging or the retailer's website.

