

**Manuals+**

[Q & A](#) | [Deep Search](#) | [Upload](#)

manuals.plus /

› **MICTUNING** /

› **MICTUNING 12 Pods RGB LED Rock Lights with P1B 12 Gang Switch Panel User Manual**

**MICTUNING P1B**

# MICTUNING 12 Pods RGB LED Rock Lights with P1B 12 Gang Switch Panel User Manual

Model: P1B

## 1. PRODUCT OVERVIEW

---

This manual provides comprehensive instructions for the installation, operation, and maintenance of your MICTUNING 12 Pods RGB LED Rock Lights and P1B 12 Gang Switch Panel. This system is designed to enhance your vehicle's lighting and control capabilities.



Image 1.1: MICTUNING 12 Pods RGB LED Rock Lights and P1B 12 Gang Switch Panel. The image displays the P1B 12-gang switch panel at the top, featuring various illuminated switch icons, and below it, twelve RGB LED rock light pods arranged in two rows.

## 2. PACKAGE CONTENTS

Verify that all components listed below are present in your package before proceeding with installation.

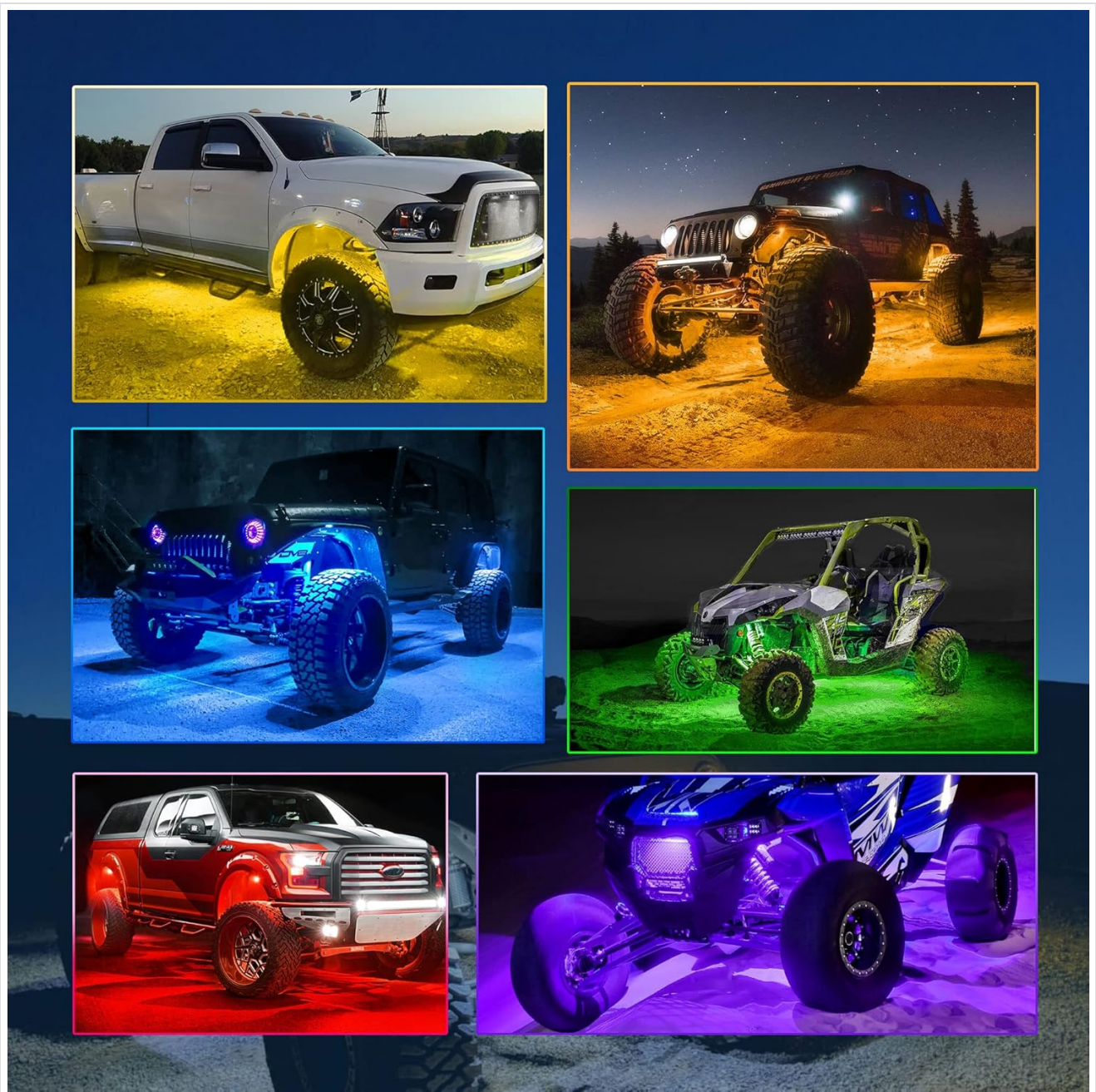


Image 2.1: Detailed view of the MICTUNING P1B Switch Panel and Rock Lights package contents. The image shows an exploded view of all included items, clearly labeled with numbers for identification.

1. 1x 8 Gang Switch Panel (P1B)
2. 1x Circuit Control Box
3. 5x Mounting Brackets
4. 140x Switch Labels
5. 1x Screwdriver
6. 1x Screws Set
7. 8x Cable Ties
8. 1x User Manual
9. 1x Fuse Holder with Wire
10. 5x Brand Stickers
11. 1x Packing Box
12. 12x RGB LED Rock Light Pods (not explicitly listed in image but implied by product title)
13. Wiring Harness for Rock Lights (not explicitly listed in image but implied by product title)



### 3. SETUP AND INSTALLATION

#### 3.1. Rock Light Installation

The MICTUNING RGB LED Rock Lights are designed for durability and performance. They feature a sturdy aluminum housing and are IP68 waterproof, ensuring reliable operation in various weather conditions.



Image 3.1: Close-up of an MICTUNING rock light pod, highlighting its IP68 waterproof rating, sturdy aluminum housing, and an inline safety protection fuse on the wiring.

1. **Choose Mounting Locations:** Select suitable, flat surfaces on your vehicle for each rock light pod. Ensure the locations allow for optimal light spread and are protected from direct impact.
2. **Secure Pods:** Use the provided screws to securely mount each rock light pod. Ensure a tight fit to prevent vibration and movement.
3. **Route Wiring:** Carefully route the wiring from each pod to the central control box. Avoid sharp edges, moving parts, and heat sources. Use cable ties to secure wiring.
4. **Connect to Control Box:** Connect the rock light wiring harness to the designated ports on the RGB control box. Ensure all connections are secure.

### 3.2. P1B Switch Panel Installation

The P1B switch panel offers flexible mounting options to suit your vehicle's interior. The control box should be mounted in a secure, dry location, typically under the hood.



Image 3.2: Illustration of the two-way mounting options for the MICTUNING P1B switch panel. It shows the panel mounted on a dashboard and on a center console, as well as the control box mounted under the hood.

1. **Mount Switch Panel:** Choose a convenient location within your vehicle's cabin. Use the provided mounting brackets and screws to secure the switch panel. Ensure it is easily accessible and does not obstruct driving.
2. **Mount Control Box:** Select a dry, secure location for the circuit control box, such as in the engine bay. Ensure it is away from excessive heat and moisture. Secure it using appropriate fasteners.
3. **Connect Wiring:** Connect the main power and ground wires from the control box to your vehicle's battery. Connect the communication cable between the switch panel and the control box.
4. **Connect Accessories:** Connect your desired accessories (e.g., rock lights, other auxiliary lights, horn) to the output terminals on the control box. Refer to the wiring diagram in the included user manual for specific connections.
5. **Apply Labels:** Use the provided 140 switch labels to customize the icons on your switch panel according to the connected accessories.

## 4. OPERATION INSTRUCTIONS



## 4.1. P1B Switch Panel Functions

The P1B switch panel features three silicone function buttons for easy control and customization of your connected accessories and the panel's display.



Image 4.1: Diagram illustrating the customization options of the MICTUNING P1B switch panel, showing 8 RGB color options and 5 levels of backlight brightness, including a backlight off function.

- **ON/OFF Switch with Memory Function:** This button controls the power to the panel and connected accessories. It retains the last setting when powered off and on.
- **Brightness Adjustment Button:** Press this button to cycle through 5 levels of backlight brightness (100%, 75%, 50%, 25%, 10%) and a backlight off function.
- **RGB Color Button:** Press this button to cycle through 8 different RGB backlight colors for the switch panel.

## 4.2. Control Modes

Each switch on the P1B panel can operate in one of four distinct control modes, indicated by the color of the switch's illumination. These modes allow for versatile control of various accessories.



# 2-WAY MOUNTING

ALLOWS YOU TO PUT IT ANYWHERE YOU LIKE

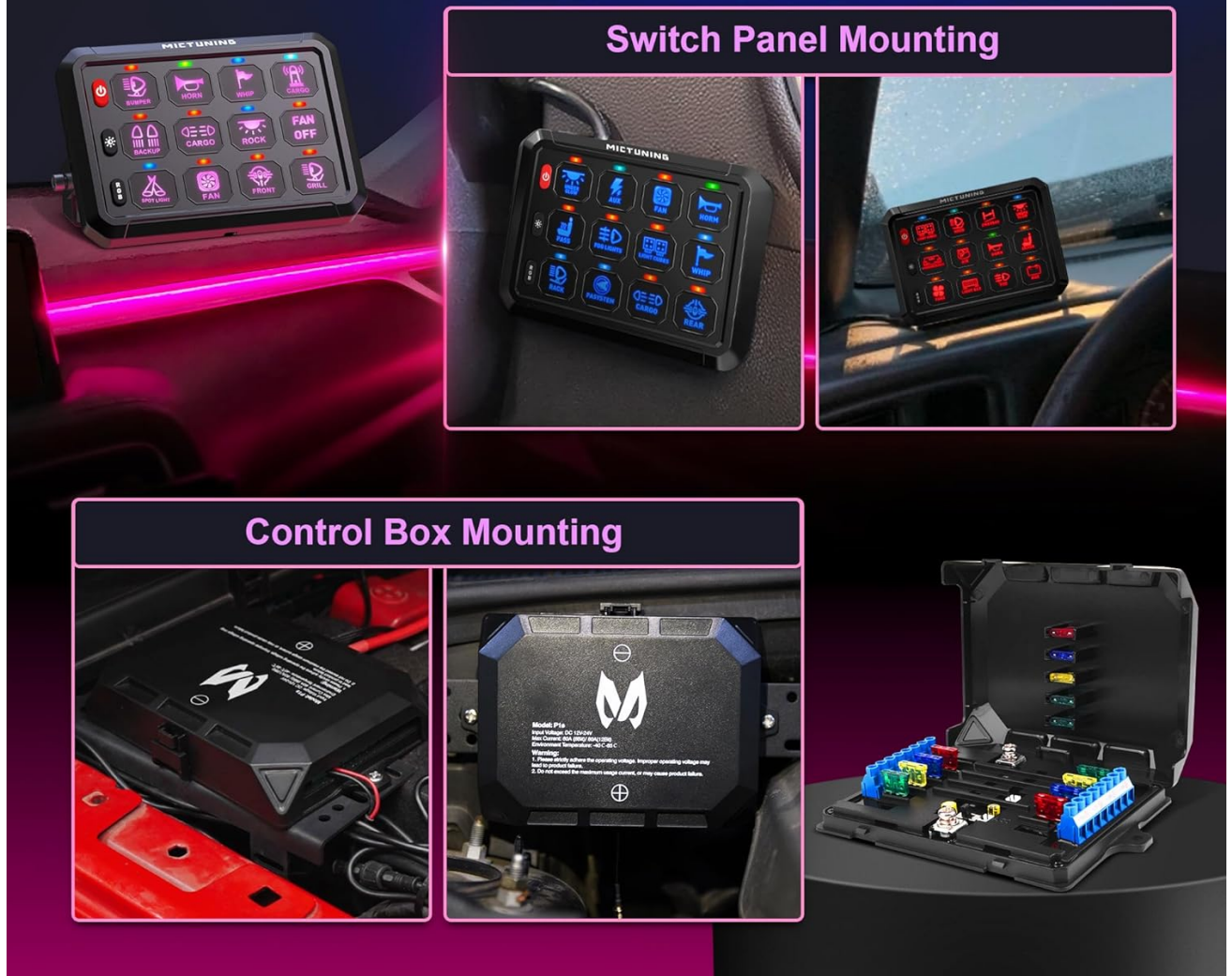


Image 4.2: Visual representation of the four control modes available on the MICTUNING P1B switch panel: Red for Toggle, Green for Momentary, Blue for Flash, and Cyan for Strobe, each depicted with an example application.

- **Red - Toggle Mode:** Provides constant power. Press once to turn on, press again to turn off. Ideal for constant lights like fog lights or rock lights.
- **Green - Momentary Mode:** Power is supplied only while the button is pressed and held. Releases power when the button is released. Suitable for applications like horns or momentary ignition power.
- **Blue - Flash Light Mode:** The connected accessory will flash at a lower speed. Can be used for turn signals or warning lights.
- **Cyan - Pulsed Strobe Mode:** The connected accessory will strobe rapidly. Useful for emergency lights or warning lights.

## 4.3. RGB Rock Light Control

The RGB LED Rock Lights are controlled via a dedicated Bluetooth application on your smartphone. This allows for dynamic color changes and effects.

- **Bluetooth Pairing:** Ensure your smartphone's Bluetooth is enabled. Open the MICTUNING app and follow the on-screen instructions to pair with the rock light control box.

- **App Functions:** The app provides various functions including color selection, brightness adjustment, dynamic modes (e.g., flashing, fading), and music synchronization.

## 5. MAINTENANCE

---

Regular maintenance ensures the longevity and optimal performance of your MICTUNING lighting system.

- **Cleaning:** Periodically clean the rock light pods and switch panel with a soft, damp cloth. Avoid abrasive cleaners or solvents that could damage the surfaces.
- **Wiring Inspection:** Annually inspect all wiring connections for corrosion, fraying, or loose terminals. Secure any loose connections and replace damaged wiring.
- **Mounting Security:** Check the mounting of both the rock light pods and the switch panel to ensure they remain securely fastened. Tighten any loose screws.
- **Fuse Check:** If a rock light pod or accessory stops working, check the inline fuse for the rock lights and the fuses within the control box. Replace blown fuses with ones of the correct amperage.

## 6. TROUBLESHOOTING

---

Refer to the following common issues and solutions before contacting customer support.

- **Rock Lights Not Turning On:**
  - Check power connections to the RGB control box.
  - Verify the inline fuse for the rock lights.
  - Ensure the Bluetooth app is connected and the lights are commanded to be on.
- **Switch Panel Not Responding:**
  - Check the main power and ground connections to the control box.
  - Ensure the communication cable between the switch panel and control box is securely connected.
  - Verify the vehicle's battery voltage is sufficient.
- **Bluetooth Connection Issues:**
  - Ensure the rock light control box is powered on.
  - Restart your smartphone's Bluetooth and the MICTUNING app.
  - Move closer to the control box to ensure a strong signal.
- **Incorrect Switch Mode:**
  - Refer to Section 4.2 to understand the different control modes and their corresponding colors. Adjust the mode as needed for your accessory.

## 7. PRODUCT SPECIFICATIONS

---

Key technical specifications for the MICTUNING 12 Pods RGB LED Rock Lights and P1B 12 Gang Switch Panel.



	<b>MICTUNING</b> <b>CM</b>	<b>OTHERS</b>
<b>RATED POWER</b>	<b>4 W/pod</b>	<b>2~2.5 W/pod</b>
<b>MEASURED POWER</b>	<b>3 W/pod</b>	<b>0.5~1.5 W/pod</b>
<b>LUMEN</b>	<b>180lm/pod</b>	<b>&lt; 90lm/pod</b>
	<b>2160lm/ 12pods</b>	<b>&lt; 1080lm/ 12pods</b>
<b>LED CHIP</b>		
<b>PURITY</b>		
<b>SCENE</b>		
<b>Say goodbye to mottled color, Don't be fooled by other</b>		

Image 7.1: Comparison table highlighting the specifications of MICTUNING rock lights versus generic alternatives, focusing on rated power, measured power, lumen output, LED chip type, and light purity.

Feature	Specification
Product Name	12 Pods RGB LED Rock Lights with P1B 12 Gang Switch Panel
Brand	MICTUNING
Model	P1B
Rock Light Type	RGB LED
Rated Power (per pod)	4 W/pod
Measured Power (per pod)	3 W/pod
Lumen Output (per pod)	180 lm/pod
Total Lumen Output (12 pods)	2160 lm/12 pods

Feature	Specification
Waterproof Rating	IP68
Housing Material	Sturdy Aluminum
Switch Panel Channels	12 Gang
Switch Panel Control Modes	4 (Toggle, Momentary, Flash, Strobe)
Switch Panel Backlight	RGB, 5-level brightness, Backlight Off
Rock Light Control	Bluetooth App

## 8. WARRANTY INFORMATION

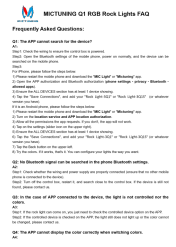


MICTUNING products are manufactured to high-quality standards. For specific warranty details, including coverage period and terms, please refer to the warranty card included with your product or visit the official MICTUNING website. Keep your purchase receipt as proof of purchase for any warranty claims.

## 9. CUSTOMER SUPPORT

If you encounter any issues that cannot be resolved using the troubleshooting guide, or if you require further assistance, please contact MICTUNING customer support through their official website or the contact information provided in your product packaging. When contacting support, please have your product model (P1B) and purchase details ready.

© 2025 MICTUNING. All rights reserved.

### Related Documents - P1B

	<p><a href="#">MICTUNING Q1 RGB Rock Lights FAQ</a></p> <p>Frequently asked questions and answers regarding the MICTUNING Q1 RGB Rock Lights, covering app connectivity, Bluetooth signals, color control, flashing lights, and power status.</p>
	<p><a href="#">MICTUNING Q1 RGBW LED Rock Lights User Manual and Installation Guide</a></p> <p>Comprehensive user manual and installation guide for MICTUNING Q1 RGBW LED Rock Lights. Includes product specifications, installation steps, wiring diagrams, and accessory details for 4-pod and 8-pod kits.</p>
	<p><a href="#">MICTUNING C2 RGBW LED Rock Lights User Manual</a></p> <p>Comprehensive user manual for the MICTUNING C2 RGBW LED Rock Lights, covering installation, wiring, technical specifications, and troubleshooting.</p>



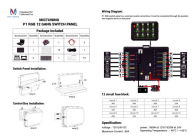
[MICTUNING C3 RGBW LED Rock Lights - Installation and User Manual](#)

Comprehensive guide for MICTUNING C3 RGBW LED Rock Lights, covering installation, wiring, control box operation, Bluetooth APP features, and troubleshooting. Enhance your vehicle with customizable multi-color lighting.



[MICTUNING P1s APP Control Switch Panel User Manual](#)

Detailed user manual for the MICTUNING P1s APP Control Switch Panel. Covers installation guides for switch panels and control boxes, comprehensive wiring diagrams for 8-gang and 12-gang configurations, fuse block specifications, control mode settings (Constant, Momentary, Strobe), Bluetooth app integration, backlight customization, and frequently asked questions. Essential guide for automotive accessory installation.



[MICTUNING P1 RGB 12 Gang Switch Panel User Guide](#)

Comprehensive guide for the MICTUNING P1 RGB 12 Gang Switch Panel, covering installation, wiring, lighting modes, and troubleshooting.