

## Manuals+

[Q & A](#) | [Deep Search](#) | [Upload](#)

[manuals.plus](#) /

› [Westbrass](#) /

› [Westbrass E507DUS-07 Universal Fit 7-inch Diverter Tub Spout Instruction Manual](#)

## Westbrass E507DUS-07

# Westbrass E507DUS-07 Universal Fit 7-inch Diverter Tub Spout

Instruction Manual

## INTRODUCTION

Thank you for choosing the Westbrass E507DUS-07 Universal Fit 7-inch Diverter Tub Spout. This product is designed for durability and ease of installation, featuring a universal adapter system to accommodate various plumbing configurations. This manual provides essential information for safe installation, proper operation, and effective maintenance to ensure long-lasting performance.

## IMPORTANT SAFETY INFORMATION

- Always turn off the main water supply before beginning any plumbing work.
- Wear appropriate personal protective equipment, such as safety glasses and gloves, during installation.
- Ensure all connections are secure to prevent leaks. Do not overtighten.
- If you are unsure about any step, consult a qualified plumber.
- Keep small parts away from children.

## PACKAGE CONTENTS

Verify that all components are present before starting installation:

- 7-inch Diverter Tub Spout (Satin Nickel)
- Teflon Tape
- 1/2-inch Copper Pipe Fitting Adapter
- Brass Adapter (for 1/2-inch IPS or 3/4-inch IPS connections)
- Hex Wrench
- Extension Nipple (4-inch)



Image: The Westbrass E507DUS-07 tub spout with its diverter button, along with the included Teflon tape, 1/2-inch copper pipe fitting adapter, brass adapter, hex wrench, and 4-inch extension nipple.

### SPECIFICATIONS

Feature	Detail
Brand	Westbrass
Model Name	Universal Fit 7" Diverter Tub Spout, Zinc

Feature	Detail
Model Number	E507DUS-07
Material	Zinc
Finish	Satin Nickel (Brushed)
Spout Reach	7 Inches
Mounting Type	Wall Mount
Special Feature	Leak Resistant, Diverter Function
Product Dimensions	7"D x 2.5"W x 2.5"H
Item Weight	12 ounces
UPC	747028638821



Image: The Westbrass E507DUS-07 tub spout showing its overall length of 7 inches and a base length of 5 3/8 inches, alongside the included installation components.



Image: Top-down view of the Westbrass E507DUS-07 tub spout, indicating a 7-inch length and 2.5-inch height, with the diverter button visible.

## SETUP AND INSTALLATION

### Tools Required

- Adjustable Wrench or Pipe Wrench
- Screwdriver (if applicable for set screw)
- Teflon Tape (included)
- Hex Wrench (included)

### Installation Steps

The Westbrass E507DUS-07 tub spout is designed for universal fit, accommodating 1/2-inch copper, 1/2-inch IPS, or 3/4-inch IPS connections. Follow the steps below based on your existing plumbing.

1. **Turn off Water Supply:** Locate and turn off the main water supply to your bathroom or entire house. Open a faucet to relieve pressure.
2. **Remove Old Tub Spout:** If replacing an existing spout, loosen any set screws on the underside of the spout or unscrew it counter-clockwise from the wall pipe. Clean the area around the pipe.
3. **Determine Connection Type:** Identify if your existing pipe is 1/2-inch copper, 1/2-inch Male Threaded (IPS), or 3/4-inch Male Threaded (IPS).
4. **Prepare the Connection:**
  - **For 1/2-inch Copper Pipe Connection:** Ensure the copper pipe extends approximately 1-1/2 inches from the wall. Slide the 1/2-inch copper pipe fitting adapter onto the copper pipe. Secure it with the included hex wrench if there's a set screw.
  - **For 1/2-inch Male Threaded Connection (IPS):** Apply Teflon tape to the threads of the existing 1/2-inch male threaded pipe. Thread the brass adapter onto the pipe.
  - **For 3/4-inch Male Threaded Connection (IPS):** Apply Teflon tape to the threads of the existing 3/4-inch male threaded pipe.
5. **Install Extension Nipple (if needed):** If your pipe does not extend far enough from the wall, use the included 4-inch extension nipple. Apply Teflon tape to the threads and connect it to your wall pipe or adapter.
6. **Attach Tub Spout:**

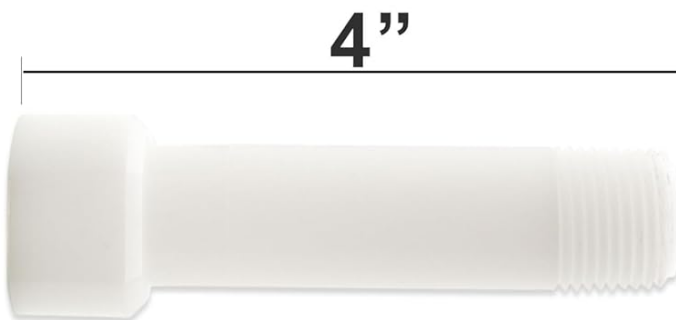
- **For Slip-On (Copper) or Adapter Connections:** Slide the tub spout onto the pipe/adapter assembly until it is flush with the wall. Secure it by tightening the set screw on the underside of the spout with the hex wrench.
- **For Threaded Connections (1/2-inch or 3/4-inch IPS):** Carefully thread the tub spout onto the pipe/adapter assembly clockwise until it is hand-tight and properly aligned. Use a wrench for a final snug turn, but do not overtighten.

7. **Test for Leaks:** Slowly turn the main water supply back on. Check all connections for leaks. If leaks occur, turn off the water, re-tighten connections, and re-test.

# UNIVERSAL TUB SPOUT



## TUB SPOUT WITH DIVERTER



## EXTENSION NIPPLE



## TEFLON TAPE



## 1/2" COPPER PIPE FITTING ADAPTER



## BRASS ADAPTER



## HEX WRENCH

Image: Diagram illustrating four common installation scenarios for the Westbrass E507DUS-07 diverter tub spout, including 1/2-inch copper pipe, 1/2-inch male threaded, 3/4-inch male threaded, and 1/2-inch male pipe with threaded end connections, showing how the adapters and extension nipple are used.

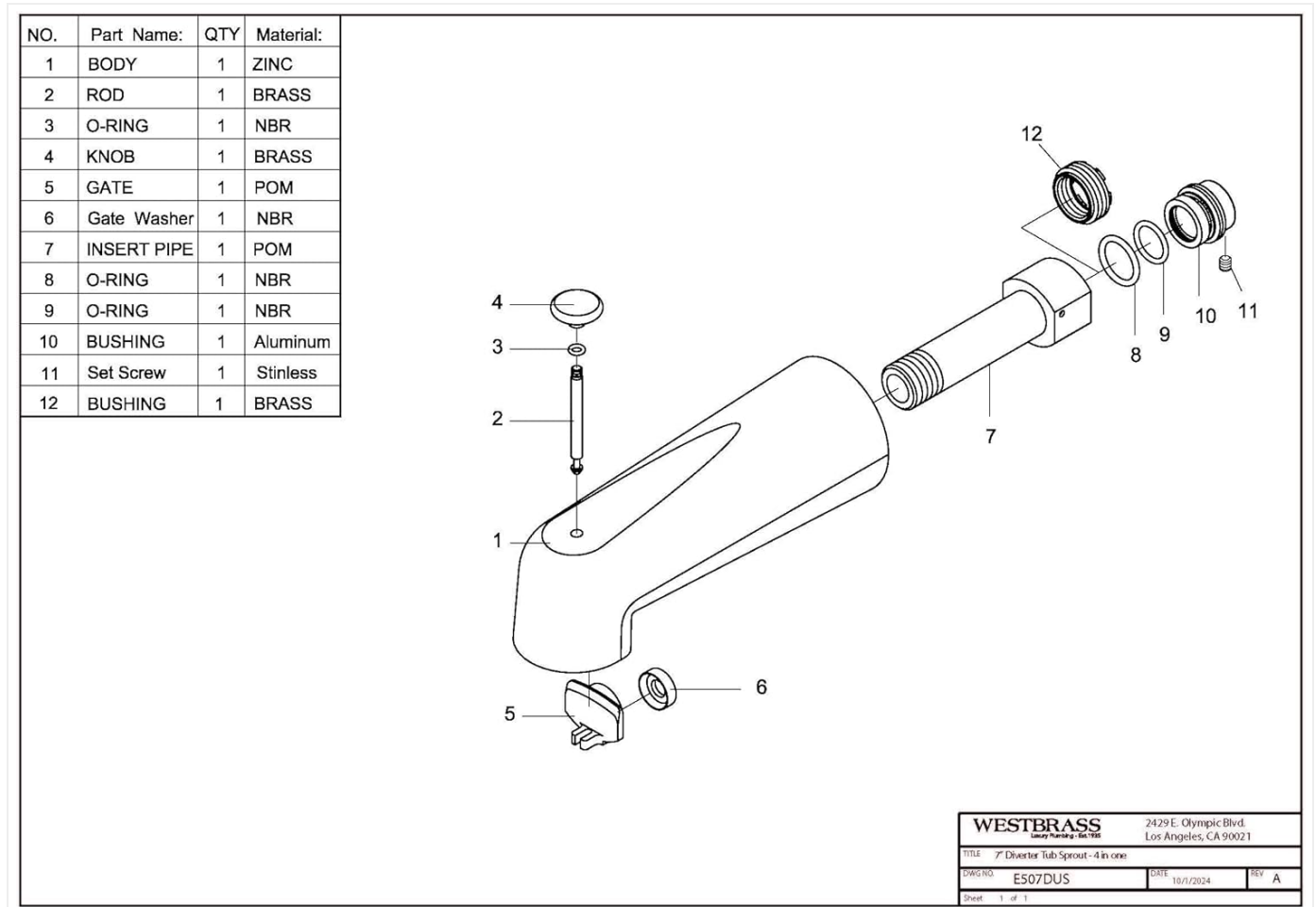


Image: An exploded view diagram of the Westbrass E507DUS-07 tub spout, detailing its internal components such as the body, rod, O-rings, knob, gate, insert pipe, bushings, and set screw, along with a parts list.

## OPERATING INSTRUCTIONS

The Westbrass E507DUS-07 tub spout features a diverter mechanism to switch water flow between the tub spout and a showerhead.

- **For Tub Fill:** Ensure the diverter knob on top of the spout is in the down position. Water will flow from the tub spout.
- **For Shower:** Pull the diverter knob upwards. This will redirect water flow to your showerhead. Push the knob down to return water flow to the tub spout.

## MAINTENANCE AND CARE

To maintain the finish and functionality of your tub spout, follow these guidelines:

- **Cleaning:** Clean the spout regularly with a soft cloth and mild soap. Avoid abrasive cleaners, harsh chemicals, or scouring pads, as these can damage the satin nickel finish.
- **Diverter Maintenance:** If the diverter mechanism becomes stiff, a small amount of silicone-based lubricant can be applied to the moving parts.
- **Leak Prevention:** Periodically check for any signs of leaks around the base of the spout. Address any leaks promptly by re-tightening connections or replacing worn seals.

## TROUBLESHOOTING

This section addresses common issues you might encounter with your tub spout.

Problem	Possible Cause	Solution
Water leaks from the base of the spout.	Loose connection, insufficient Teflon tape, or damaged O-ring/gasket.	Turn off water supply. Re-tighten the spout connection. If threaded, ensure adequate Teflon tape is applied. Inspect and replace any damaged O-rings or gaskets.
Diverter knob is stiff or not engaging.	Mineral buildup or lack of lubrication.	Clean the diverter mechanism. Apply a small amount of silicone-based lubricant to the moving parts of the diverter.
Water continues to drip from the tub spout when the diverter is engaged for the shower.	Worn diverter gate or O-rings inside the spout.	This indicates internal wear. Refer to the exploded view diagram (Image: Westbrass E507DUS-07 Exploded View Diagram) and consider replacing the internal gate or O-rings. If the issue persists, replacement of the spout may be necessary.
Spout does not fit existing plumbing.	Incorrect adapter used or incompatible pipe type.	Review the "Setup and Installation" section and the installation diagram (Image: Westbrass E507DUS-07 Installation Diagram) to ensure the correct adapter is selected for your pipe type (1/2-inch copper, 1/2-inch IPS, or 3/4-inch IPS). Confirm pipe extension from the wall is adequate.

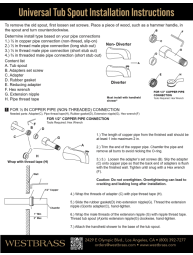
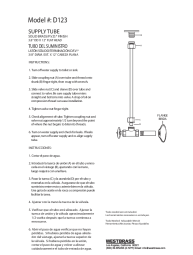
## WARRANTY AND SUPPORT

Westbrass products are manufactured to high-quality standards. For specific warranty information or technical support, please refer to the official Westbrass website or contact their customer service department. Keep your purchase receipt for warranty claims.

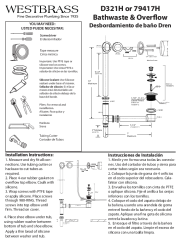

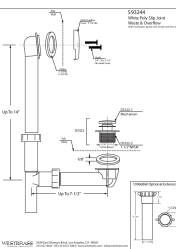
For additional information and products, you may visit the [Westbrass Storefront](#).



### Related Documents - E507DUS-07

	<p><a href="#">Universal Tub Spout Installation Guide   WESTBRASS</a></p> <p>Comprehensive installation instructions for WESTBRASS Universal Tub Spouts, covering various pipe connection types including copper and threaded male connections. Learn how to properly install your new tub spout.</p>
	<p><a href="#">Westbrass D123 Supply Tube Installation Guide</a></p> <p>Installation instructions and product details for the Westbrass D123 Solid Brass Supply Tube (3/8" OD x 12" Flat Head). Includes steps for connecting to toilets or sinks.</p>



 <p>WESTBRASS D321H or 79417H Bathwaste &amp; Overflow Desbordamiento de Baño y Drenaje</p>	<p><a href="#">Westbrass D321H or 79417H Bathwaste &amp; Overflow Installation Guide</a></p> <p>Installation instructions and care guide for Westbrass D321H or 79417H Bathwaste &amp; Overflow drain.</p>
 <p>WESTBRASS 2-Hole Bathwaste &amp; Overflow Desbordamiento de Baño de 2 Orificios y Retenciones</p>	<p><a href="#">Westbrass 2-Hole Bathwaste &amp; Overflow Installation Guide</a></p> <p>Detailed installation instructions and parts list for the Westbrass 2-Hole Bathwaste &amp; Overflow plumbing fixture. Includes required tools and steps for proper setup.</p>
 <p>FILTER HANDHELD SHOWER HSF6701</p> <p>Reduces chlorine, dirt, odor and more for softer hair and skin Rated service life: 3 months or 5,000 gallons</p> <p>60" Hose Included</p> <p>Available in Polished Chrome, Satin Nickel, and Matte Black finishes.</p>	<p><a href="#">Westbrass HSF6701 Filter Handheld Shower - Polished Chrome, Satin Nickel, Matte Black</a></p> <p>Discover the Westbrass HSF6701 Filter Handheld Shower. Enjoy softer hair and skin with its advanced filtration, reducing chlorine, dirt, and odor. Features a 60" hose and available in Polished Chrome, Satin Nickel, and Matte Black finishes. Rated for 3 months or 5,000 gallons.</p>
 <p>593244 White Poly Slip Joint Waste &amp; Overflow</p>	<p><a href="#">Westbrass 593244 White Poly Slip Joint Waste &amp; Overflow Technical Specifications</a></p> <p>Detailed technical specifications and diagram description for the Westbrass 593244 White Poly Slip Joint Waste &amp; Overflow, including component dimensions, part numbers, and manufacturer contact information.</p>