

Carrera 20062602

Carrera GO!!! Tuning Zone Slot Car Set Instruction Manual

MODEL: 20062602

1. Introduction

The Carrera GO!!! "Tuning Zone" slot car set provides an engaging racing experience with customizable elements. This 1:43 scale system features futuristic hypercars designed for dynamic performance on a challenging track layout. The set includes various track elements to ensure varied and exciting races.

This manual provides essential information for the assembly, operation, and maintenance of your Carrera GO!!! Tuning Zone set. Please read it carefully before use.

2. Safety Information

- **WARNING:** Not suitable for children under 36 months due to small parts which may present a choking hazard.
- **WARNING:** Pinching hazard during operation. Exercise caution when handling moving parts.
- **WARNING:** This toy contains magnets or magnetic components. Magnets attracting each other or a metallic object within the human body can cause serious or fatal injuries. Seek immediate medical attention if magnets are swallowed or inhaled.
- **WARNING:** This toy produces flashes of light that may trigger epilepsy in sensitive individuals.
- Retain the packaging as it contains important instructions and product information.
- Recommended age for use: 6 years and up.

3. Package Contents

Verify that all components listed below are present in your package:

- Carrera GO!!! Tuning Zone Track Sections (5.3 meters / 17.38 feet total length)

- 2 x 1:43 Scale Hypercars (with customizable parts)
- 2 x Speed Controllers with Turbo Boost function
- 1 x Power Supply Unit
- Lap Counter
- Guardrails and Supports
- Instruction Manual



Image 3.1: Rear view of the product packaging, illustrating the complete track layout and a visual representation of all included components such as track pieces, cars, controllers, and accessories.

4. Setup Instructions

Follow these steps to assemble your Carrera GO!!! Tuning Zone track:

1. **Unpack Components:** Carefully remove all track sections, cars, controllers, and accessories from the packaging.
2. **Assemble Track Sections:** Connect the track pieces firmly together, ensuring a secure fit. Refer to the track layout diagram for guidance. The track includes elements such as loops, a crossover, and a fly-over. The assembled track dimensions are approximately 180 x 75 cm (5.90 x 2.46 ft).
3. **Install Guardrails and Supports:** Attach the guardrails to the outer edges of curves and the supports for elevated track sections (like the loop and fly-over) to prevent cars from derailing.
4. **Connect Power Supply:** Plug the power supply unit into the designated connection track piece, then into a suitable electrical outlet.
5. **Connect Speed Controllers:** Insert the speed controllers into the corresponding ports on the connection track.
6. **Place Cars on Track:** Position the hypercars onto the track slots, ensuring the guide pins are correctly inserted into the track groove and the contact brushes are flat against the power rails.

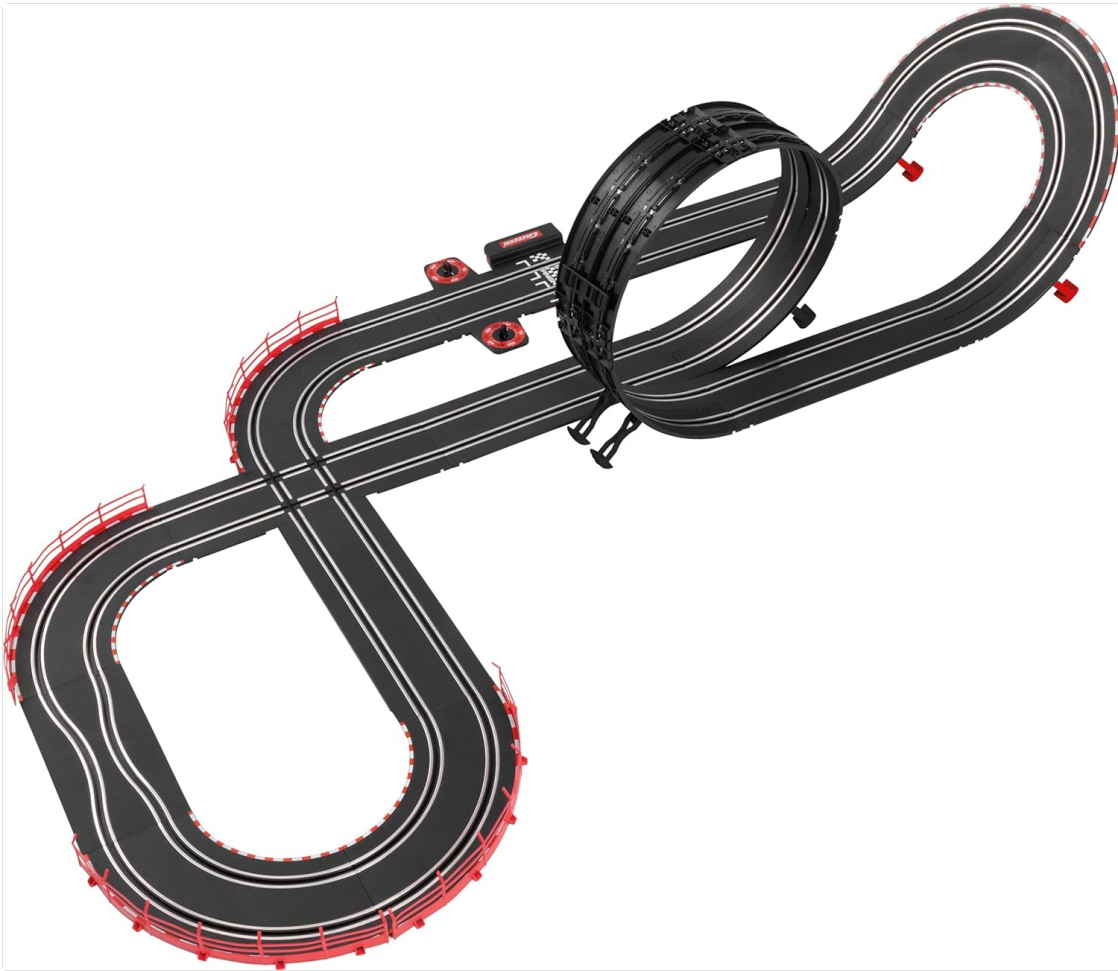


Image 4.1: An overhead view of the fully assembled Carrera GO!!! Tuning Zone track, showcasing its various elements including the loop, crossover, and elevated sections.

5. Operating Instructions

Once the track is assembled and powered, you are ready to race:

- **Starting the Race:** Ensure both cars are correctly placed on their respective track slots.
- **Speed Control:** Use the speed controller trigger to regulate the car's speed. Pull the trigger gently to start and increase speed.
- **Turbo Boost:** Press the "Turbo Boost" button on the speed controller for a temporary burst of speed. Use this strategically on straightaways or before loops for maximum effect. Be cautious when using turbo boost on curves to avoid derailing.
- **Lap Counting:** The mechanical lap counter will register each completed lap for both cars.
- **Driving Technique:** Practice controlling your car's speed, especially through curves and loops, to maintain momentum and prevent it from flying off the track.

6. Car Customization

The hypercars in the Tuning Zone set feature interchangeable parts, allowing for personalization:

- **Rear Wings:** The rear wings can be detached and swapped between cars or replaced with alternative designs (if available separately).
- **Rims:** The car rims can also be interchanged to modify the appearance of your hypercars.

Carefully detach and attach parts to avoid damage. Ensure all parts are securely fastened before

racing.



Image 6.1: A detailed view of one of the Carrera GO!!! hypercars, featuring green accents and customizable rear wing and rims.



Image 6.2: A detailed view of the second Carrera GO!!! hypercar, featuring yellow accents and customizable rear wing and rims.

7. Maintenance

Regular maintenance ensures optimal performance and longevity of your slot car set:

- **Track Cleaning:** Keep the track rails clean and free of dust and debris. Use a soft, dry cloth to wipe the track surface. Avoid using abrasive cleaners.
- **Car Brushes:** Periodically check the contact brushes on the underside of the cars. Ensure they are clean, straight, and make good contact with the track rails. Replace worn brushes as needed (spare brushes may be included or available separately).
- **Guide Pins:** Ensure the guide pins on the cars are intact and move freely.
- **Storage:** When not in use, store the track and cars in a clean, dry place, away from direct sunlight and extreme temperatures. Disassemble the track if storing for extended periods.

8. Troubleshooting

Problem	Possible Cause	Solution
Car does not move.	No power to track; car not properly seated; dirty track rails; worn brushes.	Check power supply connection; ensure car guide pin is in slot and brushes are flat; clean track rails; replace brushes.
Car derails frequently.	Excessive speed on curves; loose track connections; damaged guide pin; missing guardrails.	Reduce speed on curves; ensure all track sections are firmly connected; check guide pin for damage; install guardrails on curves.
Intermittent power.	Loose track connections; dirty power rails; faulty power supply/controller.	Ensure all track connections are tight; clean power rails thoroughly; test with another controller/power supply if available.

9. Specifications

- Model Number:** 20062602
- Brand:** Carrera
- Product Dimensions (L x W x H):** 58 x 10 x 40 cm (packaged); 3.14 kg
- Recommended Age:** 6 years and up
- Material:** Plastic
- Track Length:** 5.3 meters (17.38 feet)
- Assembled Track Dimensions:** Approximately 180 x 75 cm (5.90 x 2.46 feet)
- Scale:** 1:43
- Languages (Manual):** German, English, Spanish, French, Italian

10. Warranty and Support

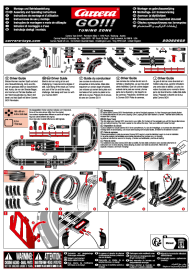
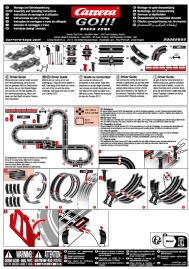
Specific warranty information is typically provided with the product packaging or on the manufacturer's official website. For any issues not covered in this manual, or for information regarding spare parts, please contact Carrera customer support.

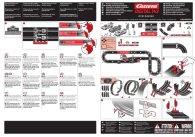
You can find more information and support resources on the official Carrera website www.carrera-toys.com

Note: Information regarding the availability of spare parts is not explicitly provided in the product specifications.

© Carrera. All rights reserved.

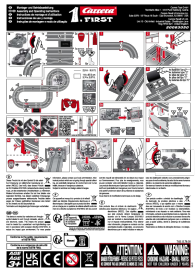
Related Documents - 20062602

	<p>Carrera GO!!! Tuning Zone Slot Car Track Assembly Instructions</p> <p>Comprehensive assembly and operating guide for the Carrera GO!!! Tuning Zone slot car set, including track layout, car maintenance, and driving tips. Learn how to set up and enjoy your Carrera slot car track.</p>
	<p>Carrera GO!!! Speed Zone Slot Car Track: Assembly & Operation Guide</p> <p>Comprehensive assembly and operating instructions for the Carrera GO!!! Speed Zone slot car track system (Model 20062605). Learn how to set up your track, maintain your cars, and use the turbo boost feature for exciting races.</p>



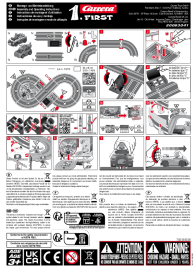
[Carrera DIGITAL 143 DTM RACING Slot Car Set Assembly and Operating Instructions](#)

Comprehensive assembly and operating instructions for the Carrera DIGITAL 143 DTM RACING slot car set. Learn how to set up the track, program cars, and operate the system safely. Includes multilingual guidance and operational tips.



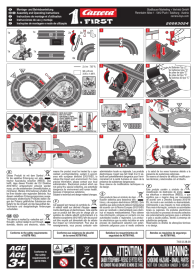
[Carrera FIRST Spidey Go Webs Go Assembly and Operating Instructions](#)

Detailed assembly and operating instructions for the Carrera FIRST Spidey Go Webs Go slot car track set, including safety information and multilingual guidance.



[Carrera FIRST Paw Patrol Slot Car Race Track Assembly and Operating Instructions](#)

Comprehensive guide for assembling and operating the Carrera FIRST Paw Patrol slot car race track. Includes safety warnings, setup instructions, and maintenance tips.



[Carrera FIRST Mario Kart Slot Car Race Track - Assembly and Operating Instructions](#)

Official assembly and operating instructions for the Carrera FIRST Mario Kart slot car race track set. Learn how to set up, operate, and maintain your race track. Includes safety warnings and technical specifications.