

atomberg Atomberg Intellon

Atomberg Intellon Water Purifier User Manual

Model: Atomberg Intellon

1. INTRODUCTION

The Atomberg Intellon is an advanced adaptive water purifier designed to provide safe and pure drinking water. It features an Intelligent Filtration System (IFS) that analyzes source water TDS levels to optimize purification, ensuring essential minerals are retained. This manual provides detailed instructions for installation, operation, maintenance, and troubleshooting to ensure optimal performance and longevity of your water purifier.



Image 1.1: Atomberg Intellon Water Purifier and its companion app.

2. KEY FEATURES

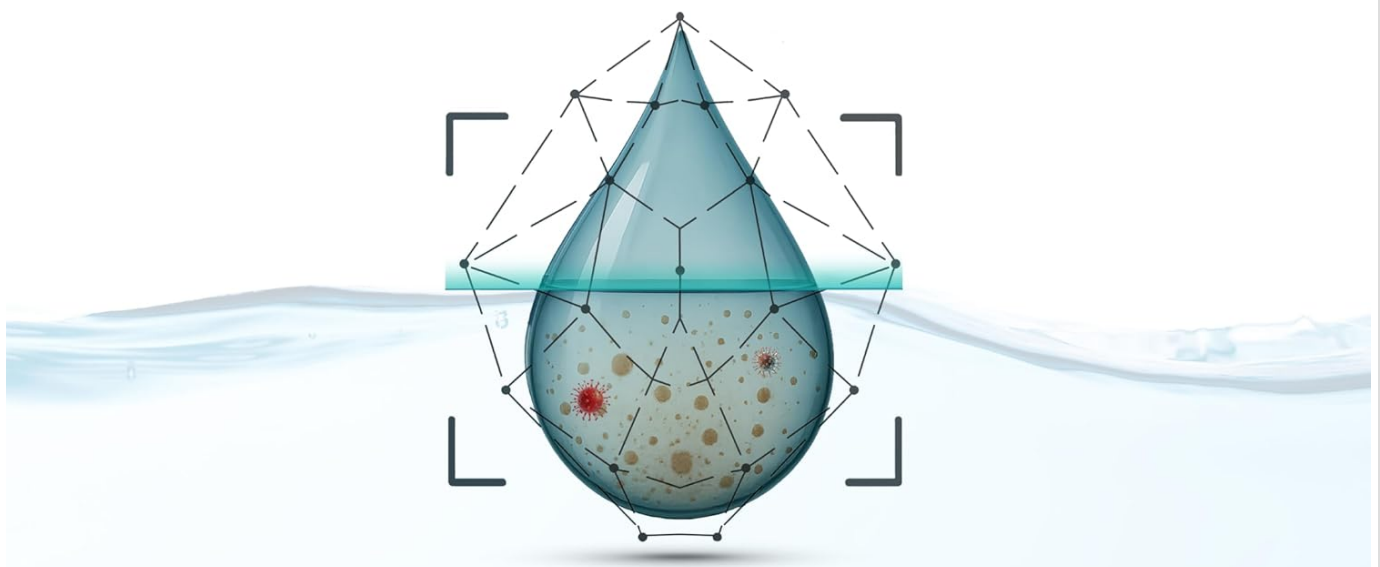
- **Intelligent Filtration System (IFS):** Automatically adapts purification based on input water TDS, preserving essential minerals and extending filter life.
- **Dynamic 7-Stage Purification:** Utilizes RO+UF+UV+Alkaliser stages to ensure safe and pure water while maintaining balanced pH.
- **Custom Purification Modes:** Offers four intelligent modes:
 - *Adaptive Flow Mode:* Auto-selects optimum purification based on input water TDS.
 - *RO+UV Mode:* Recommended for consistently high TDS levels.
 - *TasteTune Mode:* Allows adjustment of filtered water TDS to personal preference.
 - *VacayMode:* Ensures frequent AutoCleansing of filters when idle to prevent contaminant buildup.
- **Extended Filter Life:** Engineered for up to 2 years of use without replacement, featuring an Advanced RO

Membrane, Membrane Protector, and AutoCleanse technology.

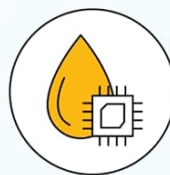
- **Smart IoT Connectivity:** Connects with the Atomberg Home App for real-time filter health monitoring, diagnostics, mode selection, and water usage tracking.
- **Modern Design & Large Storage:** Contemporary design with an intuitive LED Ring display for TDS and service alerts, and an 8L food-grade storage tank.
- **High Water Recovery:** Achieves up to 50% water recovery, saving significant amounts of water annually compared to traditional RO purifiers.

India's 1st Adaptive Water Purifier*

Adapts to your water's TDS and uses RO only when needed



Adaptive
Flow Mode™



Extends filter
life significantly



Real-time filter
health updates

*For Home & Domestic category.
*WHO recommends TDS <300ppm as suitable for drinking

Image 2.1: Adaptive Water Purifier technology and benefits.

Longevity meets precision

No filter replacement for 2 years*
Engineered for lasting purity and safety



**Advanced
RO Membrane**
Built for durability



**Membrane
Protector**
Prevents scaling



**AutoCleanse™
Technology**
Cleans filters automatically

*Tested on water with TDS of 1500 ppm

Image 2.2: Components ensuring filter longevity and purity.

3. INSTALLATION

3.1 Package Contents

Upon unboxing, ensure all components are present:

- Water purifier unit
- Pre-filter (complimentary)
- Tube Set
- Ball Valve
- Screw Set
- Connector Set
- Digital User Manual (accessible via Atomborg Home App)

Comes with a **free pre-filter**
worth ₹1500/-



Image 3.1: Water purifier with complimentary pre-filter.

3.2 Pre-Installation Requirements

- **Input Water Pressure:** Must be maintained between 10–30 PSI for optimal performance.
- **Booster Pump:** Required if input water pressure is below 10 PSI.
- **Pressure Reducing Valve (PRV):** Required if input water pressure exceeds 30 PSI.
- **Power Outlet:** A standard electrical outlet must be available near the installation site.
- **Space:** Ensure adequate space for wall mounting and access for maintenance. Refer to specifications for dimensions.

3.3 Installation Service

Atomberg offers free installation services. To schedule an installation:

- Call Atomberg customer support at +91 844-844-9442.
- Choose your preferred date and time.
- Installation is typically completed within 24-48 hours of scheduling.

Free installation by atomberg



Call us at
+91 844-844-9442



Choose your preferred
Date & Time



Installation within
24–48 hours*



*T&C Apply.

Image 3.2: Free installation service by Atomberg.

4. OPERATING INSTRUCTIONS

4.1 Initial Setup and First Use

After professional installation, the purifier will be ready for its first use. It is recommended to discard the first few liters of purified water to flush out any residual manufacturing impurities.

4.2 Purification Modes

The Atomberg Intellon offers four intelligent purification modes, selectable via the Atomberg Home App:

- **Adaptive Flow Mode:** The default and recommended mode. The purifier automatically detects the input water's TDS level and selects the most appropriate purification method (RO, UF, UV) to ensure optimal purity while retaining essential minerals.
- **RO+UV Mode:** Manually select this mode when the TDS level in your region is consistently high, ensuring robust

RO purification followed by UV disinfection.

- **TasteTune Mode:** Customize the TDS level of the filtered water to your preferred taste. This allows for a personalized drinking experience.
- **VacayMode:** Activate this mode when you are away for an extended period. It ensures frequent AutoCleansing of filters and the membrane to prevent contaminant buildup and maintain system hygiene.



Image 4.1: Atomberg Home App interface for selecting purification modes.

4.3 Atomberg Home App Control

The Atomberg Home App provides comprehensive control and monitoring capabilities:

- **Monitor Filter Health:** View real-time status and remaining life of each filter component.
- **Run Diagnostics:** Perform system checks to identify any potential issues.
- **Select Purification Mode:** Easily switch between the four available modes.
- **Track Water Usage & Savings:** Monitor your daily water consumption and the amount of water saved.
- **Raise Service Requests:** Directly initiate service requests through the app.

Full Control with **atomberg Home App**

Monitor real-time filter health and run diagnostic scans.



Image 4.2: Monitoring filter health via the Atomberg Home App.

The purifier's LED Ring display provides visual cues for operation and alerts:

- Displays filtered water TDS.
- Color-coded for purification modes and service alerts (e.g., Tank Full, No Input Water, Tank Filling, Service Alert).

5. MAINTENANCE

5.1 Filter Life and Replacement

The Atomberg Intellon is designed for a filter life of up to 2 years, tested for up to 12000L of filtered water. The Atomberg Home App will notify you when a filter or part needs replacement.

Factors affecting filter life:

- Input water TDS levels
- Turbidity
- Hardness

Your water changes. Our filters adapt.

See how long they last based on your source water



No need to change
all filters together



Longer RO life with
Municipal Water



Realtime Monitoring with
Atomberg Home App

Water type	Typical source	Expected RO membrane life*	Life expectancy of our other filters*
Soft water	Municipal supply (TDS < 300 ppm)	~20,000Ltrs +	~15,000Ltrs
Moderate water	Borewell + Tanker (TDS ~750 ppm)	~15,000Ltrs	~15,000Ltrs
Hard water	Borewell (TDS ~1500 ppm)	~12,000Ltrs	~12,000Ltrs

*Filter life is impacted by your water's TDS, turbidity & hardness. The better the input, the longer your filters last.

*Quantification of purified water (in litres) is based on our internal lab testing on different water conditions.

Image 5.1: Expected filter life based on water type.

5.2 AutoCleanse Technology

The purifier features AutoCleanse technology, which frequently cleans the filters and membrane. This automated process helps prevent scaling and contaminant buildup, contributing to the long life and consistent performance of the filters.

5.3 Cleaning the Exterior

Wipe the exterior of the purifier with a soft, damp cloth. Do not use abrasive cleaners or solvents.

6. TROUBLESHOOTING

This section provides solutions to common issues. For problems not listed here, or if issues persist, please contact Atomberg customer support.

Problem	Possible Cause	Solution
---------	----------------	----------

Problem	Possible Cause	Solution
No water dispensing	No input water supply; Power outage; Tank empty.	Check water supply valve; Ensure power connection; Wait for tank to fill (LED ring will indicate "Tank Filling").
Low water flow rate	Low input water pressure; Clogged filters.	Check input water pressure (ensure 10-30 PSI); Check filter health via app and schedule service if needed.
Unusual taste/odor in water	Filters nearing end of life; New filter initial flush required.	Check filter health on app; Discard first few liters after new installation/filter change.
LED ring shows "Service" alert	Indicates a component requires attention or replacement.	Check Atomberg Home App for specific details and raise a service request.

7. SPECIFICATIONS

Attribute	Detail
Brand	Atomberg
Model Name	Atomberg Intellon
Product Dimensions	28L x 35W x 55.8H Centimeters
Item Weight	8.5 Kilograms (8 kg 500 g)
Installation Type	Wall Mount
Power Source	Corded Electric
Maximum Flow Rate	25 Liters Per Hour
Operating Pressure Range	10 – 30 PSI
Supported Water TDS Level Maximum	1500 PPM
Water Saving Percentage	50%
Filter Life Cycle	2 Years (up to 12000L)
Storage Tank Capacity	8 Liters
Included Components	Water purifier, Pre- Filter, Tube Set, Ball Valve, Screw Set, Connector Set

A stylish new member
of your kitchen with **8 litre capacity**



Image 7.1: Product dimensions.

8. WARRANTY AND SUPPORT

8.1 Warranty Information

The Atomberg Intellon Water Purifier comes with a **2-year all-inclusive warranty**. This warranty covers all filters, membranes, and electrical parts at zero cost.

To activate your warranty, register directly from the Atomberg Home App at the time of installation.

No Annual Maintenance Contract (AMC) Hassle: After the 2-year warranty period, there are no mandatory annual contracts. The Atomberg Home App will notify you precisely when a filter or part requires replacement. You only pay for the specific components that need servicing as per a transparent rate card.

No service cost for 2 years

Beyond that? No AMC! Only pay for what needs fixing

	Year 1	Year 2	Year 3	Year 4
Intellon Service Cost [#]	₹0		Pay only for what needs servicing	
Brand 1 Service Cost [*]	₹0		₹5,000	
Brand 2 Service Cost [*]	₹0	₹5,000	₹5,000	₹5,000

[#]refer rate card for each component @ www.atomberg.com/intellon-waterpurifier

^{*}approximate service cost for comparable models including annual maintenance contract



Image 8.1: Service cost comparison and warranty details.

8.2 Customer Support

For any queries, service requests, or technical assistance, please contact Atomberg customer support:

- **Phone:** +91 844-844-9442
- **Atomberg Home App:** Raise service requests directly through the app.

Related Documents

	<p>Atomberg Renesa Pedestal Fan Assembly and Warranty Information</p> <p>This document provides assembly instructions and warranty details for the Atomberg Renesa Pedestal Fan. It includes a step-by-step guide for assembling the fan, product interface information, and comprehensive warranty registration and exclusion details.</p>
	<p>Atomberg Studio+ Ceiling Fan Instruction Manual</p> <p>Comprehensive instruction manual for the Atomberg Studio+ Ceiling Fan, covering installation, operation, troubleshooting, and maintenance. Features energy savings and remote control functionality.</p>