

## Manuals+

[Q & A](#) | [Deep Search](#) | [Upload](#)

manuals.plus /

› [Fanttik](#) /

› [Fanttik S2 Pro 3.7V Electric Screwdriver & X5 Max MANUAL HAND TOOL User Manual](#)

## Fanttik S2 Pro & X5 Max

# Fanttik S2 Pro 3.7V Electric Screwdriver & X5 Max MANUAL HAND TOOL User Manual

Model: S2 Pro & X5 Max | Brand: Fanttik

## PRODUCT OVERVIEW

---

The Fanttik S2 Pro is a 3.7V electric screwdriver designed for various household tasks, from computer assembly to furniture installation. It features adjustable torque settings for precision. The Fanttik X5 Max is a manual hand tool, crafted from aluminum alloy, ideal for delicate electronic repairs and tasks requiring fine control.





Figure 1: The Fanttik S2 Pro electric screwdriver (left) and the Fanttik X5 Max manual screwdriver (right), showcasing their sleek design and compact form factor.

## SETUP AND ACCESSORIES

---

Before first use, ensure all components are present and familiarize yourself with the accessories provided.

### Included Bits and Extension Rod

The S2 Pro comes with a comprehensive set of 20 commonly used S2 steel bits (5 long, 15 short) and a 60mm extension rod. These bits fit a 1/4" hex shank.

# 20 PCS S2 STEEL BITS

Fit For 1/4" Hex Shank



Figure 2: An illustration of the 20 S2 steel bits included with the Fanttik S2 Pro, along with the 60mm extension rod, designed to fit a 1/4" hex shank.

## L-Adapter

An L-adapter is included to facilitate access to screws in tight or awkward spaces, enhancing the versatility of the S2 Pro.

# L-ADAPTER INCLUDED

## Reach Every Corner With Ease



Figure 3: The Fanttik S2 Pro electric screwdriver equipped with the L-adapter, demonstrating its ability to reach fasteners in confined areas, such as inside a drawer.

### Bit Installation

1. Select the appropriate bit for your task.
2. Insert the bit firmly into the magnetic chuck of the screwdriver.
3. Ensure the bit is securely seated before operation.

# STRONG MAGNETIC FORCE

Multi-Magnetic Bits



Figure 4: A close-up view illustrating the strong magnetic force of the screwdriver's chuck, securely holding a bit and a screw, which aids in precise fastening.

## OPERATING INSTRUCTIONS

---

### Fanttik S2 Pro Electric Screwdriver

The S2 Pro features a 250 RPM high-magnetic motor and offers precise torque control.

- **Power and Speed:** The motor operates at 250 RPM, providing efficient fastening.
- **Torque Settings:** Utilize the mechanical-electronic hybrid torque control system to select from 7 adjustable torque settings: 0.5, 1, 2, 3, 4, 5, and 6 N·m. The 0.5 N·m setting is recommended for delicate electronic repairs.
- **Direction Control:** Use the directional switch to select between tightening and loosening modes.



Figure 5: The Fanttik S2 Pro electric screwdriver in use, demonstrating its smooth operation and 250 RPM motor speed while working on a bicycle component.

## Applications of S2 Pro

The S2 Pro is suitable for a wide range of tasks, adapting to different torque requirements:

- **1.0 N·m:** Ideal for delicate items like Bluetooth speakers.
- **2.0 N·m:** Suitable for assembling 3D printers.
- **3.0 N·m:** For general home appliance repairs.
- **4.0 N·m:** Effective for assembling items like wiggle cars.
- **5.0 N·m:** Appropriate for cabinet assembly.
- **6.0 N·m:** For more robust tasks such as bed frame assembly.

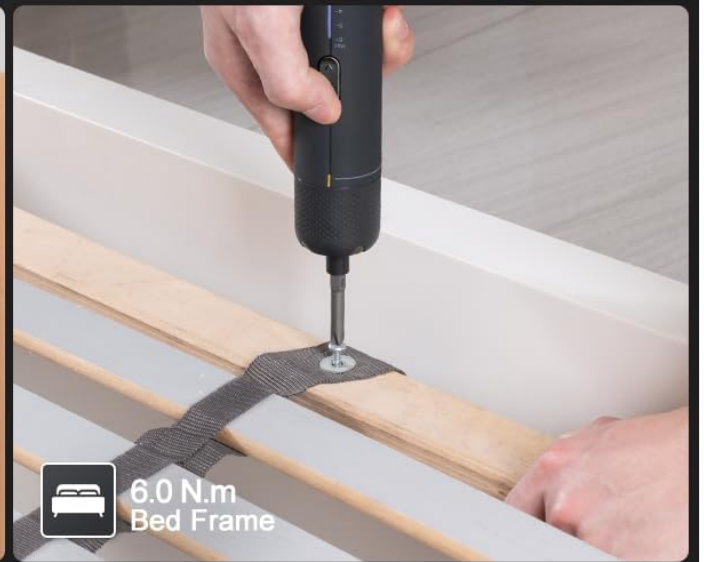


Figure 6: A collage of images demonstrating the Fanttik S2 Pro's versatility across various applications, from delicate electronics to furniture assembly, highlighting its adjustable torque settings for each task.

## Fanttik X5 Max Manual Hand Tool

The X5 Max is a precision manual screwdriver designed for delicate work, offering enhanced control and comfort.

- **Material:** Constructed from aluminum alloy with an anodic sandblasting surface to prevent sweat and corrosion.
- **Ergonomics:** Features a humanized knurled anti-skid design in the middle of the handle for improved grip without discomfort.
- **360° Rotating Cap:** The tail of the screwdriver includes a 360° rotating cap, allowing for natural hand motion and reducing hand fatigue during prolonged use.

# DELICATE WORKMANSHIP

More Comfortable Experience



360° Rotating Cap



Knurled non-slip design



Aluminum Alloy Handle



## NOTICE:

1. THIS ITEM IS MANUAL PRECISION SCREWDRIVER
2. NOT ELECTRICITY / BATTERY POWERED
3. FOR DELICATE ITEM MAINTENANCE ONLY

Figure 7: A detailed view of the Fanttik X5 Max manual screwdriver, highlighting its key design features: the 360° rotating cap for ease of use, the knurled non-slip grip, and the durable aluminum alloy handle.

## Applications of X5 Max

The X5 Max is specifically designed for precision tasks where an electric screwdriver might be too powerful or lack the necessary tactile feedback.

- Ideal for delicate electronic repairs, such as working on circuit boards.
- Suitable for small components in devices like drones or smartphones.

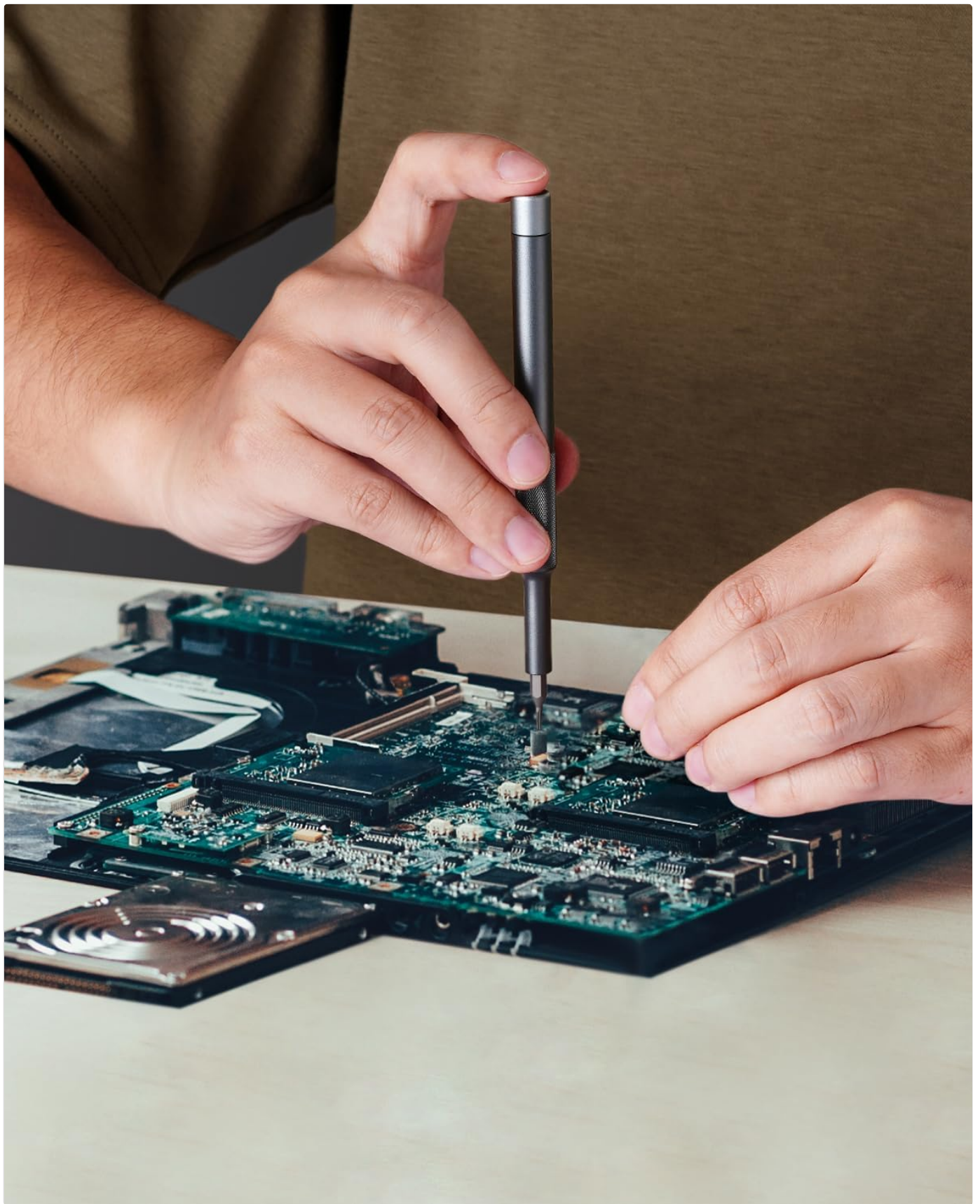


Figure 8: A user employing the Fanttik X5 Max manual screwdriver for intricate work on a laptop's circuit board, demonstrating its precision for electronic repairs.



Figure 9: The Fanttik X5 Max manual screwdriver being used to assemble a small component of a drone, highlighting its suitability for detailed and delicate tasks.

## MAINTENANCE

---

Proper maintenance ensures the longevity and optimal performance of your Fanttik screwdrivers.

- **Cleaning:** Wipe down the screwdrivers and bits with a clean, dry cloth after each use to remove dust and debris. Avoid using abrasive cleaners or solvents.

- **Storage:** Store the screwdrivers and bits in their integrated storage case in a dry environment to prevent corrosion and loss of components.
- **Bit Care:** Inspect bits regularly for wear or damage. Replace worn bits to maintain fastening efficiency and prevent damage to screw heads.

## TROUBLESHOOTING

---

This section addresses common issues you might encounter with your Fanttik screwdrivers.

Problem	Possible Cause	Solution
S2 Pro not turning on/operating.	Low battery.	Ensure the S2 Pro is fully charged.
Screw head stripping.	Incorrect bit size or excessive torque (S2 Pro).	Use the correct bit size. For S2 Pro, reduce the torque setting.
Bit slipping from screw head.	Worn bit or improper seating.	Replace worn bits. Ensure the bit is fully seated in the chuck.

## SPECIFICATIONS

---

Detailed technical specifications for the Fanttik S2 Pro and X5 Max.

- **Model:** S2 Pro & X5 Max
- **Brand:** Fanttik
- **Material:** Aluminum
- **Power Source (S2 Pro):** Battery Powered
- **Voltage (S2 Pro):** 3.7 Volts
- **Speed (S2 Pro):** 250 RPM
- **Torque Settings (S2 Pro):** 0.5, 1, 2, 3, 4, 5, 6 N·m
- **First Available Date:** April 25, 2025

## WARRANTY AND SUPPORT

---

For information regarding product warranty, technical support, or service, please refer to the official Fanttik website or contact their customer service directly. Specific warranty terms and conditions may vary by region and purchase date.

You can visit the official Fanttik store on Amazon for more information: [Fanttik Store](#)

© 2025 Fanttik. All rights reserved.

This manual is for informational purposes only. Specifications are subject to change without notice.