

Manuals+

[Q & A](#) | [Deep Search](#) | [Upload](#)

manuals.plus /

- › [HOVERAir](#) /
- › [HOVERAir X1 PROMAX 8K Action Flying Camera Instruction Manual](#)

HOVERAir X1 PROMAX

HOVERAir X1 PROMAX 8K Action Flying Camera Instruction Manual

1. INTRODUCTION

The HOVERAir X1 PROMAX is a foldable 8K action flying camera designed for capturing high-quality aerial footage. This manual provides essential information for setting up, operating, maintaining, and troubleshooting your device to ensure optimal performance and safety.

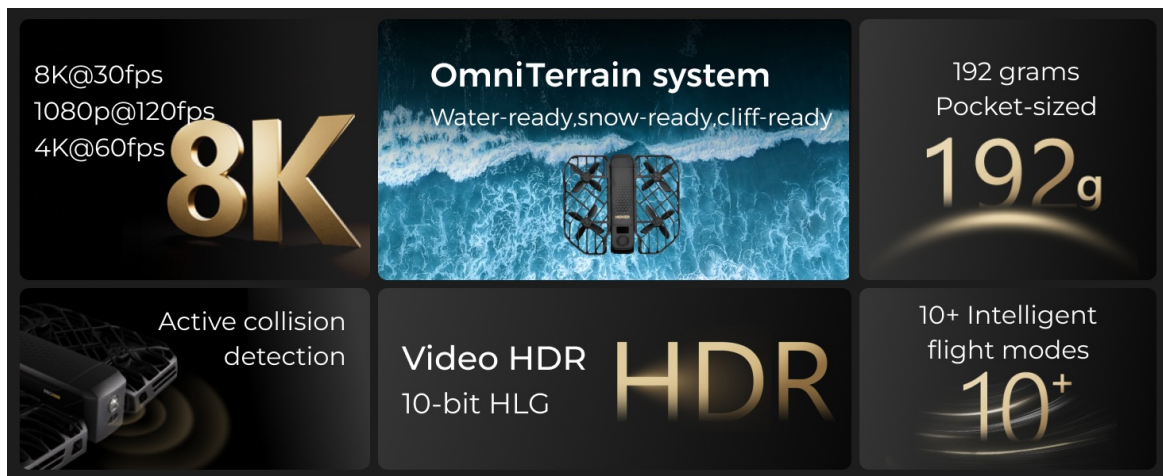


Image: Key highlights of the HOVERAir X1 PROMAX, showcasing its compact design and advanced features.

2. SETUP

2.1 Unboxing and Initial Inspection

Carefully unpack all components from the box. Verify that all items listed in the 'What's in the Box' section are present and undamaged. Inspect the drone for any visible signs of damage before first use.



Image: The HOVERAir X1 PROMAX drone with its included accessories, laid out for inspection.

2.2 Charging the Battery

The HOVERAir X1 PROMAX uses 1920 Milliamp Hours Lithium Ion smart batteries. Before first use, fully charge all batteries using the provided X1 PRO/PROMAX Charging Hub and Charging plug. The charging hub allows for rapid charging of multiple batteries.



Image: Illustration of the HOVERAir X1 PROMAX smart battery, designed to prevent overcharging and over-discharging.

2.3 Folding and Unfolding

The HOVERAir X1 PROMAX features a foldable design for portability. Gently unfold the propeller guards until they lock into place. To fold, reverse the process, ensuring the guards are securely tucked against the main body.



Image: The HOVERAir X1 PROMAX in its compact, folded state, held in a hand.

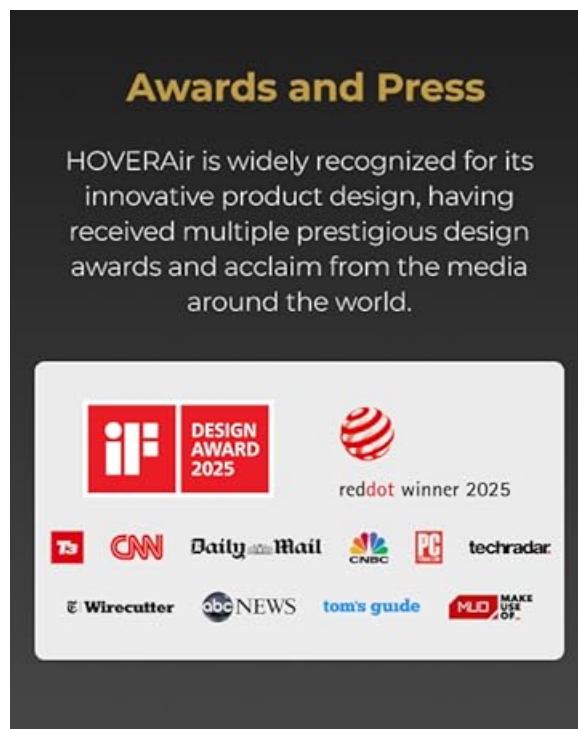


Image: The HOVERAir X1 PROMAX unfolded and ready for flight.

3. OPERATING MODES

The HOVERAir X1 PROMAX offers over 10 fully automatic flight modes, allowing for hands-free

filming. These modes can be selected directly on the device or through the companion app.

Your browser does not support the video tag.

Video: This video demonstrates various flight modes of the HOVERAir X1 PROMAX, including Hover, Zoom Out, Follow, Orbit, Bird's Eye, Dolly Track, and Side Track, showcasing the drone's autonomous capabilities.

3.1 Automatic Flight Modes

- **Hover:** The drone maintains a stable position in the air.
- **Zoom Out:** The drone flies backward and upward, revealing more of the surroundings.
- **Follow:** The drone tracks a designated subject, keeping it in the frame.
- **Orbit:** The drone circles around a subject at a set distance and altitude.
- **Bird's Eye:** The drone ascends and points directly down for an overhead shot.
- **Dolly Track:** The drone moves forward or backward while maintaining a consistent distance from the subject.
- **Ski Mode:** Optimized for capturing skiing action, tracking the subject's movement.
- **Cycling Mode:** Specifically upgraded for capturing cycling action, following the rider.
- **Indoor Follow:** Tracks subjects in indoor environments.
- **360° Spin:** The drone performs a full 360-degree rotation in place.

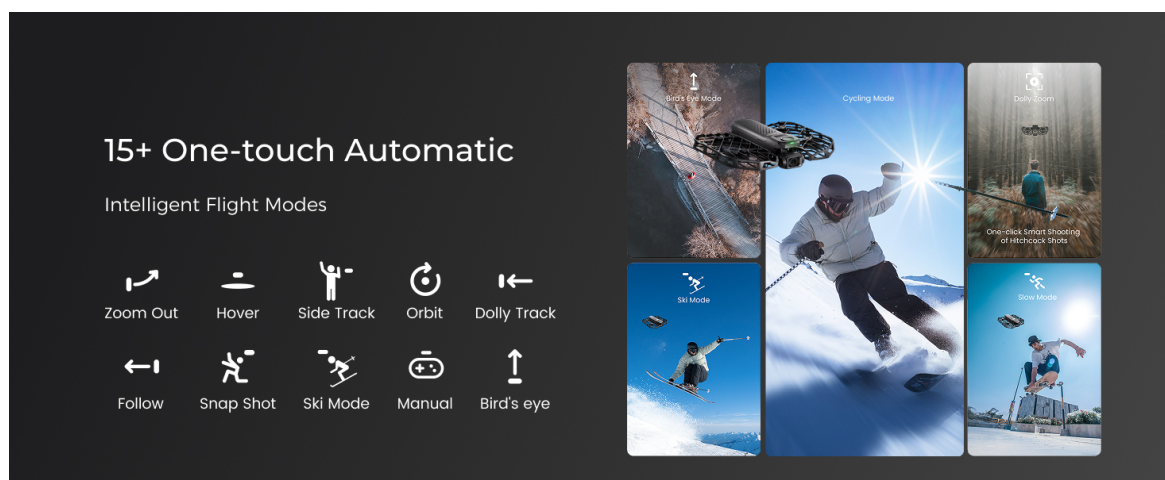


Image: Visual representation of various one-touch automatic intelligent flight modes available on the HOVERAir X1 PROMAX.

4. CONTROL

4.1 Hands-Free Operation

The HOVERAir X1 PROMAX is designed for hands-free operation. It can take off from your hand with a simple click or voice command, eliminating the need for a traditional controller or smartphone for basic flight modes.

Portable & Easy-to-Use

Like all Hover products, we are designed to be safe, easy, and fun to fly. Take it out of your pocket, unfold it, and launch an automated flight mode in seconds with the press of a button.



Image: The HOVERAir X1 PROMAX demonstrating hands-free operation, taking off from a user's palm.

4.2 Beacon & Remote Controller

For enhanced control, the HOVERAir X1 PROMAX can be paired with the optional Beacon and Joystick Set. The Beacon provides real-time monitoring and transmission within a 1km range, featuring a 1.78" OLED display. It supports sound commands and sound recording and can be mounted on handlebars or clipped to your jacket.

Manual ISO, Post Editing Capabilities



ORIGINAL



Adjust



Filters



Crop

Image: The HOVERAir X1 PROMAX drone shown alongside its Beacon controller.

Beacon & Remote Controller

The Beacon keeps you connected with up to 1km transmission range. Its 1.78" OLED display lets you monitor footage in real-time, and it can be mounted on handlebars or clipped to your jacket.



Image: The Beacon controller mounted on bicycle handlebars, showing its 1.78" OLED display.

4.3 App Control

The HOVERAir X1 app allows you to configure flight modes, download and share content, and launch manual control. It provides a comprehensive interface for managing your drone's settings and media.

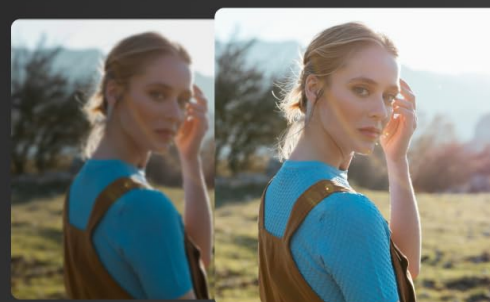
5. FEATURES

5.1 8K Action Camera

Capture stunning 8K@30fps videos (horizontal) and 4K@30fps (vertical) with the HOVERAir X1 PROMAX. It features a 1/1.3" CMOS sensor and a 107° FOV wide lens for clear, vibrant images with 14 stops of dynamic range.

Professional-Grade Creativity

Upgrade your filmmaking, the first **8K@30fps** flying camera. Capture **4K@120fps** slow-mo and HDR **10-bit HLG** videos for superior detail.



8-bit

10-bit

Image: Demonstrates the clarity and detail of 8K video capture from the HOVERAir X1 PROMAX.

Capture Shots You Could Never Before



It has 14 stops of dynamic range and a 107-degree view, ideal for content creation.

1/1.3"
CMOS
16mm
Wide Lens



It features a 1/1.3" CMOS sensor and 7-layer lens for clear, vibrant images.

Image: Illustrates the 8K ultra-wide field of view captured by the HOVERAir X1 PROMAX camera.

5.2 SmoothCapture 2.0 Stabilization

This mini drone features a two-axis gimbal with Electronic Image Stabilization (EIS) and Horizon Leveling (HL) for steadier shots and effortless filming during movement, ensuring smooth and stable footage.

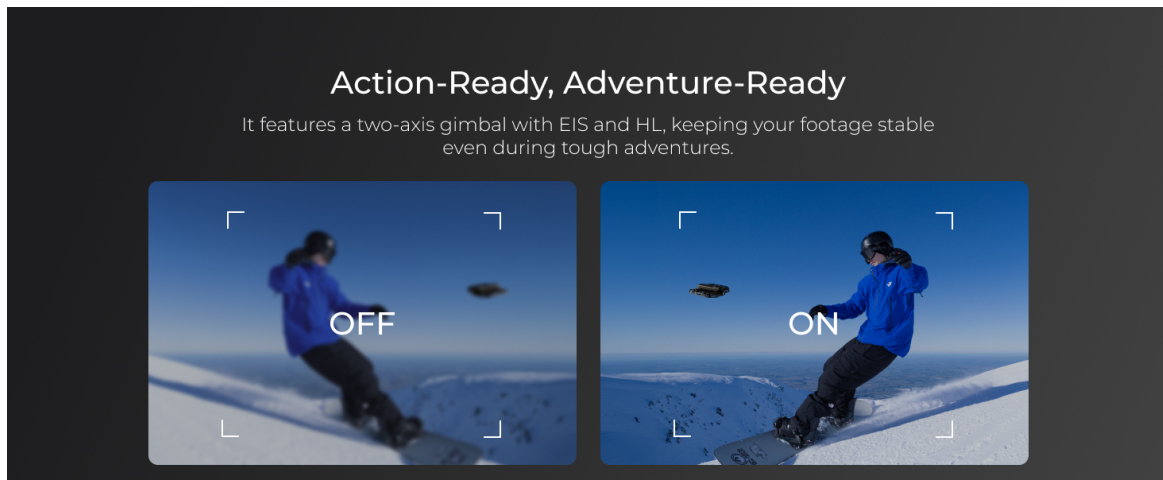


Image: Visual comparison of footage with and without SmoothCapture 2.0 stabilization enabled.

5.3 OmniTerrain Flight

The innovative OmniTerrain feature enables all-terrain flight, including over snow, water, and cliffs. This allows you to capture diverse scenery during any adventure.

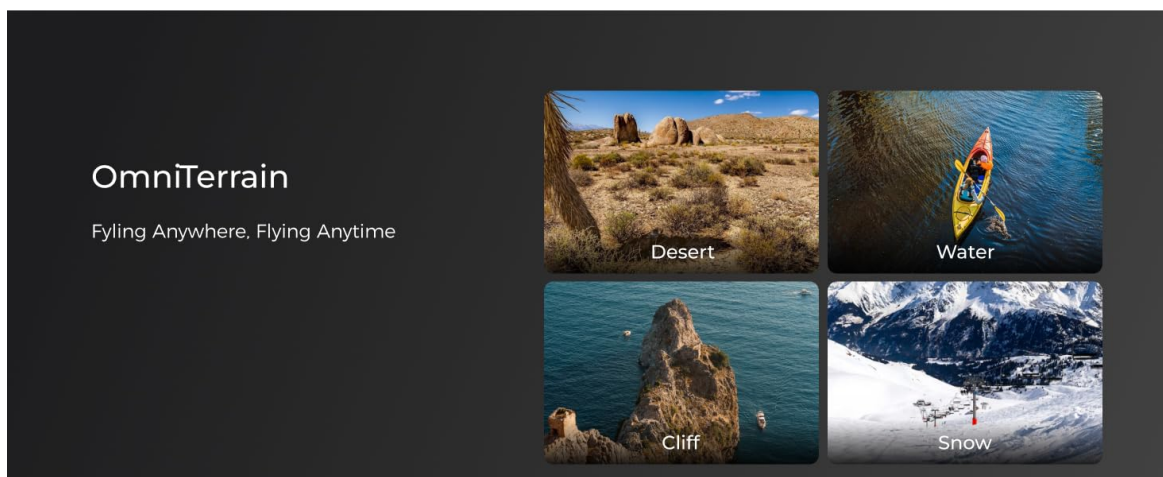


Image: Depicts the HOVERAir X1 PROMAX flying over various terrains like desert, water, cliffs, and snow,

highlighting its OmniTerrain capability.

5.4 Fast Follow Speed

The HOVERAir X1 PROMAX features an upgraded aerodynamic design, allowing it to reach follow speeds of up to 42 KM/H (26 mph) and a top burst speed of 60 KM/H. An enhanced chip and tracking algorithm keep the subject centered in the frame during high-speed activities.

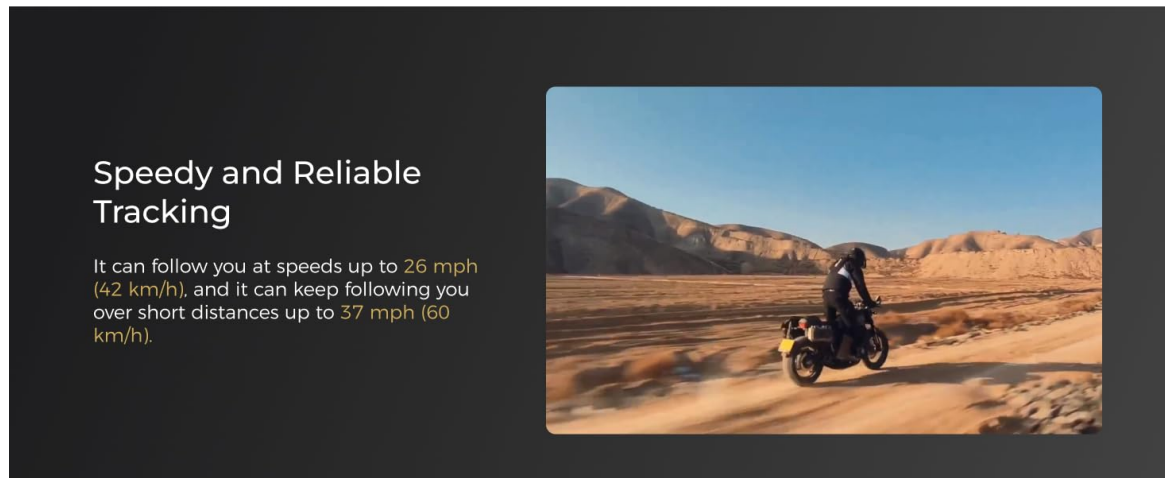


Image: Comparison of HOVERAir PRO MAX and HOVERAir X1 follow speeds and features.

5.5 Rear Active Collision Detection

Equipped with an advanced rear ToF (Time of Flight) proximity sensor and visual sensor, the drone supports braking before collisions at speeds up to 3m/s when detecting obstacles, ensuring safer tracking in complex environments.

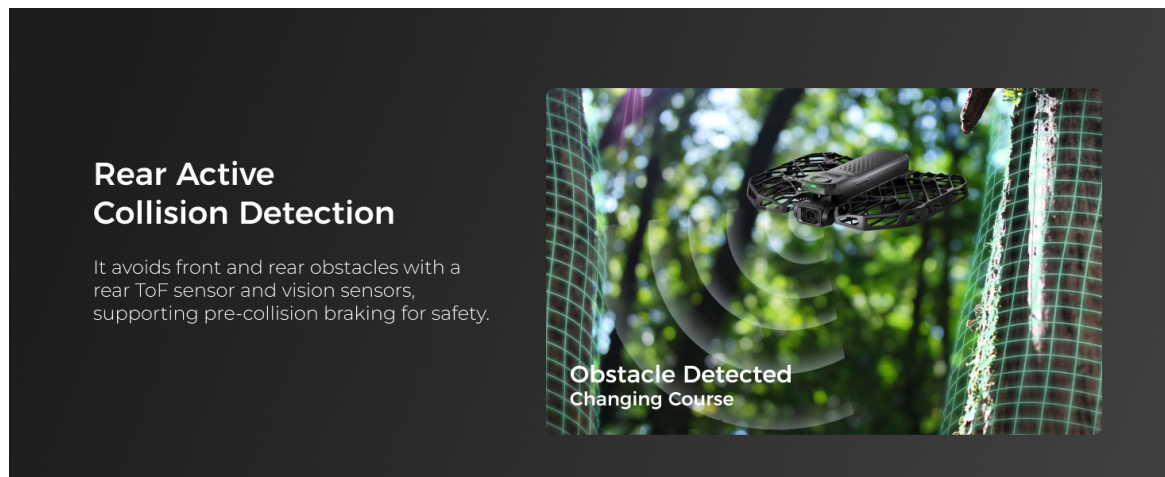


Image: Diagram illustrating the Rear Active Collision Detection system of the HOVERAir X1 PROMAX.

5.6 Portable, Foldable, and Durable Design

The foldable and fully enclosed design ensures portability and safety. The propeller guards are made of HEM, an aerospace-grade material lighter than carbon fiber, offering superior safety, elasticity, durability, and structural integrity.



Image: The HOVERAir X1 PROMAX in its compact, folded state, held in a hand.

5.7 Ample Internal Storage and Expansion

The action camera comes with 64GB UFS internal storage and supports an external SD card of up to 1TB, providing plenty of space for all your adventures.



Image: Diagram illustrating the internal storage and SD card expansion capabilities of the HOVERAir X1 PROMAX.

6. MAINTENANCE

To ensure the longevity and optimal performance of your HOVERAir X1 PROMAX, regular maintenance is recommended.

- **Cleaning:** Use a soft, dry cloth to clean the drone's body and camera lens. Avoid using harsh chemicals or abrasive materials.
- **Propeller Inspection:** Regularly check propellers for any signs of damage (cracks, bends). Replace damaged propellers immediately to prevent flight instability.
- **Battery Care:** Store batteries in a cool, dry place. Avoid fully discharging batteries for extended

periods.

- **Firmware Updates:** Periodically check the HOVERAir X1 app for available firmware updates to ensure your drone has the latest features and performance enhancements.

7. TROUBLESHOOTING

If you encounter issues with your HOVERAir X1 PROMAX, refer to the following common troubleshooting steps:

- **Drone not powering on:** Ensure the battery is fully charged and correctly inserted.
- **App connectivity issues:** Verify Wi-Fi connection between your smartphone and the drone. Restart both the app and the drone if necessary.
- **Unstable flight:** Check propellers for damage and ensure they are properly installed. Perform IMU calibration via the app if flight remains unstable.
- **Rapid battery discharge:** This can occur if the drone is not in use. Monitor charge levels and ensure batteries are stored appropriately.
- **Obstacle avoidance failure:** Ensure sensors are clean and unobstructed. Avoid flying in overly complex environments that may exceed sensor capabilities.

8. SPECIFICATIONS

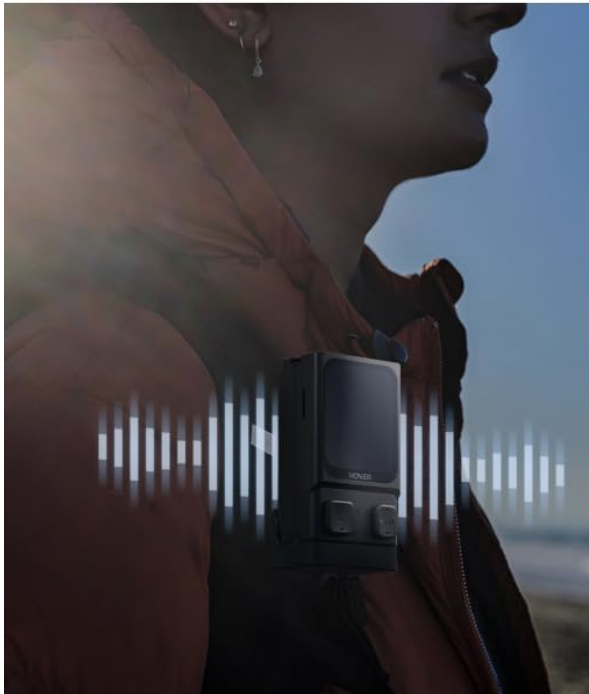
Brand	HOVERAir
Model Name	HOVERAir X1 PROMAX
Special Feature	Intelligent Flight Paths, Triple Stabilization, SmoothCapture 2.0, Active Collision Detection, OmniTerrain Flight
Video Capture Resolution	8K 4K
Effective Still Resolution	12 MP
Connectivity Technology	Wi-Fi
Item Weight	120 Grams (4.2 ounces)
Battery Capacity	1920 Milliamp Hours
Product Dimensions	6.81"L x 5.87"W x 1.54"H
Material	HEM (proprietary material)

9. WHAT'S IN THE BOX

The HOVERAir X1 PROMAX (Fly Joy Combo) includes the following items:

- HOVERAir X1 PROMAX x1
- HOVERAir X1 PRO Smart Battery x2
- X1 PRO/PROMAX Charging Hub x1
- Charging plug x1
- Combo case x1
- Storage Bag x1
- Joystick Set x1
- Handlebar Mount x1
- Magnetic Adapter Mount x1

Beacon & Remote Controller



- Real-time monitoring and transmission within a 1km range
- Supports sound commands and sound recording

Image: All components included in the HOVERAir X1 PROMAX Fly Joy Combo package.

10. WARRANTY AND SUPPORT

HOVERAir provides comprehensive support for its products.

- **Warranty:** The HOVERAir X1 PROMAX comes with a 1-year warranty against manufacturing defects.
- **After-sales Support:** For any inquiries or assistance, please contact our after-sales team via email: support@hoverair.com.