

AGT INDUSTRIAL AGT-MX-CRT23

AGT 0.7 Ton Stand-On Skid Steer Track Loader Crawler User Manual

Model: AGT-MX-CRT23

INTRODUCTION

This manual provides essential information for the safe and efficient operation, maintenance, and troubleshooting of your AGT 0.7 Ton Stand-On Skid Steer Track Loader Crawler. Please read this manual thoroughly before operating the machine to ensure proper use and to prevent injury or damage.

PRODUCT OVERVIEW

The AGT 0.7 Ton Stand-On Skid Steer Track Loader Crawler (Model AGT-MX-CRT23) is a compact yet powerful machine designed for various tasks including construction, landscaping, and warehouse operations. It features a RATO Engine 24HP, a maximum lifting force of 800 kg, and a bucket capacity of 0.1 m³. Its robust design and track system provide excellent maneuverability and stability in diverse working conditions.



Figure 1: Side view of the AGT 0.7 Ton Stand-On Skid Steer Track Loader Crawler, highlighting its compact design and track system.



Figure 2: Front view of the skid steer, showing the bucket and overall width.

SAFETY INFORMATION

Always prioritize safety when operating heavy machinery. Familiarize yourself with all safety decals on the machine and follow all local safety regulations. Ensure all operators are trained and understand the machine's controls and capabilities.

- Always wear appropriate personal protective equipment (PPE), including hard hat, safety glasses, and steel-toed boots.
- Never operate the machine under the influence of alcohol or drugs.
- Inspect the machine before each use for any damage or malfunctions.
- Ensure the work area is clear of bystanders and obstacles.
- Do not exceed the maximum lifting capacity of 800 kg.

SETUP

Unpacking and Assembly

The AGT 0.7 Ton Skid Steer is shipped with the bucket detached. Follow these steps for initial setup:

1. Carefully uncrate the machine and its components.
2. Locate the included bucket.
3. Align the bucket's attachment points with the loader arms.
4. Secure the bucket using the provided pins and clips. Ensure all connections are firm and secure.



Figure 3: Close-up view of the bucket attachment points, illustrating how the bucket connects to the loader arms.

Initial Fluid Checks

Before first operation, verify fluid levels:

- **Engine Oil:** Check the engine oil level using the dipstick. The RATO R740D engine requires 1.6 liters of oil.
- **Hydraulic Fluid:** Verify the hydraulic oil level. The hydraulic oil tank capacity is 33 liters.
- **Fuel:** Fill the fuel tank with 92# gasoline. The fuel tank capacity is 19.6 liters.

OPERATING INSTRUCTIONS

Controls Overview

The control panel is located at the operator's station. Familiarize yourself with the layout before starting the machine.



Figure 4: Operator control panel, displaying joysticks, gauges, and switches for machine operation.

Starting the Engine

1. Ensure the parking brake is engaged.
2. Turn the ignition key to the "ON" position.
3. Pull the choke knob if the engine is cold.
4. Turn the ignition key to the "START" position and release once the engine starts.
5. Allow the engine to warm up for a few minutes before operating.

Driving and Maneuvering

Use the two control levers (joysticks) to control the machine's movement and the loader arms.

- Push both levers forward to move straight ahead.
- Pull both levers back to move straight backward.
- Push one lever forward and pull the other back to turn in place (skid steer action).
- The maximum travel speed is 4 km/h.

Loader Arm and Bucket Operation

The loader arms and bucket are controlled by specific levers on the control panel.

- **Lifting:** Use the right joystick to raise the loader arms. The lifting time is approximately 4.6 seconds.
- **Lowering:** Use the right joystick to lower the loader arms. The descent time is approximately 3.2 seconds.
- **Tilting Bucket:** Use the left joystick to tilt the bucket forward (dump) or backward (curl). The bucket discharge angle is 23°.
- The maximum lifting force is 800 kg.
- The maximum working height is 2285 mm.

- The maximum unloading height is 1575 mm.



Figure 5: The skid steer with its bucket slightly raised, demonstrating the loader arm's initial range of motion.

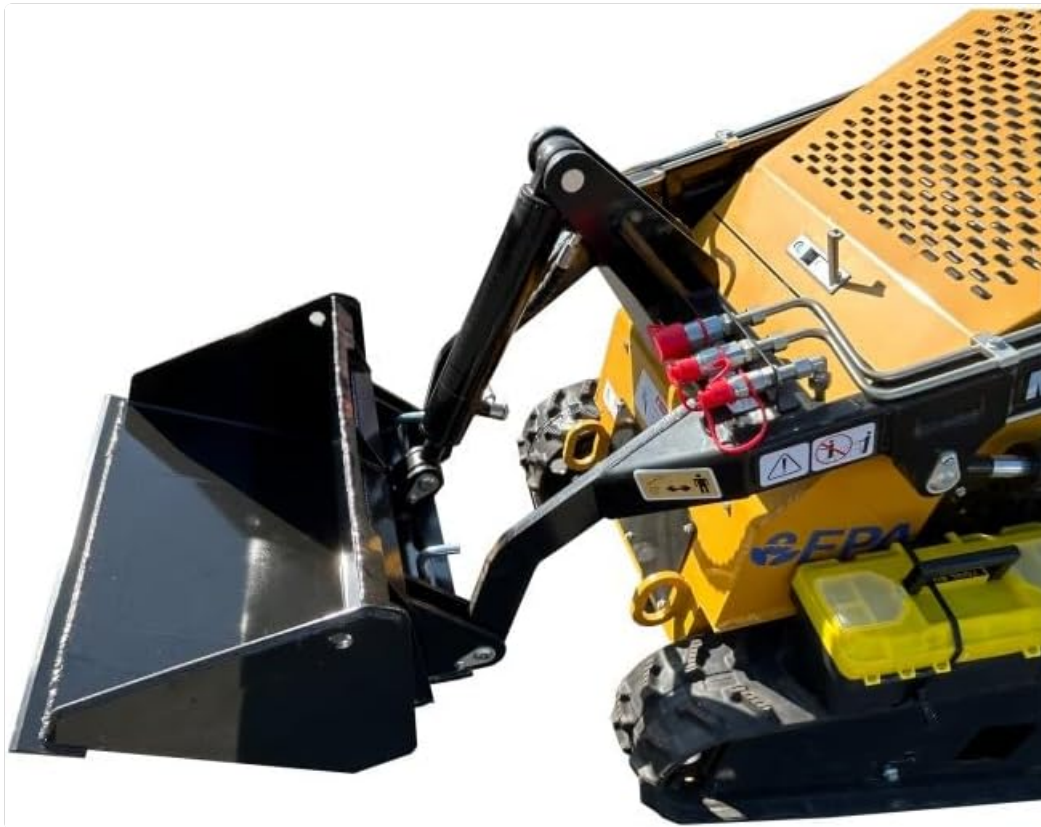


Figure 6: The skid steer with its bucket fully raised, illustrating the maximum working height for unloading.

MAINTENANCE

Regular maintenance is crucial for the longevity and optimal performance of your skid steer.

Engine Maintenance

- **Engine Oil Change:** Replace engine oil every 50 operating hours or annually, whichever comes first. The engine oil

replacement capacity is 1.6 liters.

- **Air Filter:** Inspect and clean the air filter regularly, especially in dusty conditions. Replace if damaged.
- **Spark Plugs:** Check and clean spark plugs periodically. Replace as needed.
- **Fuel Filter:** Replace the fuel filter according to the engine manufacturer's recommendations.



Figure 7: Rear-side view of the skid steer, providing access to the engine compartment for maintenance.

Hydraulic System Maintenance

- **Hydraulic Fluid Check:** Check hydraulic fluid level daily before operation. Maintain the level within the specified range. The hydraulic oil tank capacity is 33 liters.
- **Hydraulic Filter:** Replace the hydraulic filter as recommended in the service schedule to ensure clean hydraulic fluid.
- **Hoses and Connections:** Inspect all hydraulic hoses and connections for leaks, cracks, or damage. Replace any compromised components immediately.



Figure 8: View of the hydraulic cooler, an important component for maintaining optimal hydraulic system temperature.



Figure 9: Close-up of the hydraulic quick connect fittings, used for attaching hydraulic implements.

Track System Maintenance

- **Track Tension:** Periodically check and adjust track tension to prevent premature wear and ensure proper operation.
- **Cleaning:** Remove debris, mud, and rocks from the tracks and undercarriage after each use.

TROUBLESHOOTING

This section provides solutions to common operational issues. For problems not listed here, contact customer support.

Problem	Possible Cause	Solution
Engine fails to start	No fuel; Dead battery; Faulty spark plug	Check fuel level; Charge/replace battery; Inspect/replace spark plug
Loss of hydraulic power	Low hydraulic fluid; Clogged hydraulic filter; Damaged hydraulic hose	Check/add hydraulic fluid; Replace filter; Inspect/replace hose
Machine moves slowly or weakly	Overload; Low engine power; Track issues	Reduce load; Check engine maintenance; Inspect tracks for debris/tension

SPECIFICATIONS

Detailed technical specifications for the AGT 0.7 Ton Stand-On Skid Steer Track Loader Crawler (Model AGT-MX-CRT23).

Parameter	Value
Model	AGT-MX-CRT23
Working Weight	685 kg (1500 lbs)
Bucket Capacity	0.1 m³
Travel Speed (low/high)	4 km/h
Maximum Lifting Force	800 kg (1765 lbs)
Maximum Working Height	2285 mm
Maximum Pin Height	1967 mm
Maximum Unloading Height	1575 mm
Loading Distance at Max Unloading Height	661 mm
Wheelbase	905 mm
Ground Clearance	163 mm
Bucket Discharge Angle	23°
Bucket Width	1120 mm
Overall Length	2135/2432 mm
Overall Width	904 mm (35.59 inches)

Parameter	Value
Overall Height	1364 mm (50 inches)
Body Width	810 mm
Slewing Radius	1493 mm
Engine Brand	Rato
Engine Model	R740D
Maximum Horsepower	24 PS (23HP)
Maximum Power	17 Kw
Maximum Speed (Engine)	3600 rpm
Number of Cylinders	2
Cooling Method	Fan cooling
Engine Oil Replacement Capacity	1.6 L
Fuel Type	Gasoline
Fuel Grade	92#
Fuel Tank Capacity	19.6 L
Hydraulic Oil Tank Capacity	33 L
Hydraulic Pressure	17 MPa
Track Type	Rubber (180*72*37)
Climbing Ability	30°
Product Dimensions (L x W x H)	92 x 35.59 x 50 inches
Country of Origin	China

WARRANTY INFORMATION

Specific warranty details for the AGT 0.7 Ton Stand-On Skid Steer Track Loader Crawler are typically provided at the point of purchase or within separate warranty documentation. Please refer to your purchase agreement or contact AGT INDUSTRIAL directly for comprehensive warranty coverage information.

Extended protection plans may be available for purchase separately. For example, 3-Year and 4-Year Protection Plans are offered to extend coverage beyond the standard manufacturer's warranty.

SUPPORT AND CONTACT

For technical assistance, parts inquiries, or further support regarding your AGT 0.7 Ton Stand-On Skid Steer Track Loader Crawler, please contact AGT INDUSTRIAL customer support.

- **Manufacturer:** AGT INDUSTRIAL
- **Online Store:** [Visit the AGT INDUSTRIAL Store on Amazon](#)

© 2025 AGT INDUSTRIAL. All rights reserved.

Documents - AGT INDUSTRIAL

[\[pdf\]](#) User Manual Guide Catalog

Quebec Regional 2025243 assets ctfassets net ueyxw0p8lpyv 23A9BD6B CEE3 B38D D1FA

Page 1 of 289 Quebec Regional Event - Mar 26, 2025 Lot # 1 2 3 Details 1998

lang:en score:9 filesize: 1.03 M page_count: 289 document date: 2025-03-27

This catalog was created at March 27, 2025 04:25:28 PM OMT.
Please check our website for the most accurate and up-to-date information.