

VILTROX DC-550

VILTROX DC-550 5.5-inch Camera Field Monitor User Manual

Your guide to setting up, operating, and maintaining your VILTROX DC-550 field monitor.

1. INTRODUCTION

The VILTROX DC-550 is a high-performance 5.5-inch camera field monitor designed to enhance your video production workflow. Featuring a 1200 nits high-brightness IPS touch screen with 1920x1080 resolution, 4K HDMI loop in/out, and a suite of professional monitoring functions, it provides clear and accurate visual feedback for DSLR and mirrorless camera users. This manual provides detailed instructions for its proper use and care.

Your browser does not support the video tag.

Video Description: An official VILTROX video showcasing the features and applications of the DC-550 and DC-550 Pro camera field monitors, demonstrating its use in various filming scenarios and highlighting its key functionalities like brightness, color accuracy, and monitoring tools.

2. GETTING STARTED

2.1 What's in the Box

Verify that all components are present in your package:

- 1x DC-550 Camera Video Monitor
- 1x Sunshade Hood
- 1x VILTROX NP-F550 Battery
- 1x VL-550 Cold Shoe Adapter
- 1x Type-C Cable
- 1x Standard HDMI Cable
- 1x Mini HDMI Cable
- 1x Carry Case
- 1x User Manual
- 1x Packing Box



Image Description: The VILTROX DC-550 camera field monitor displayed with its full set of accessories, including the sunshade hood, NP-F550 battery, cold shoe adapter, various cables, and a carry case.

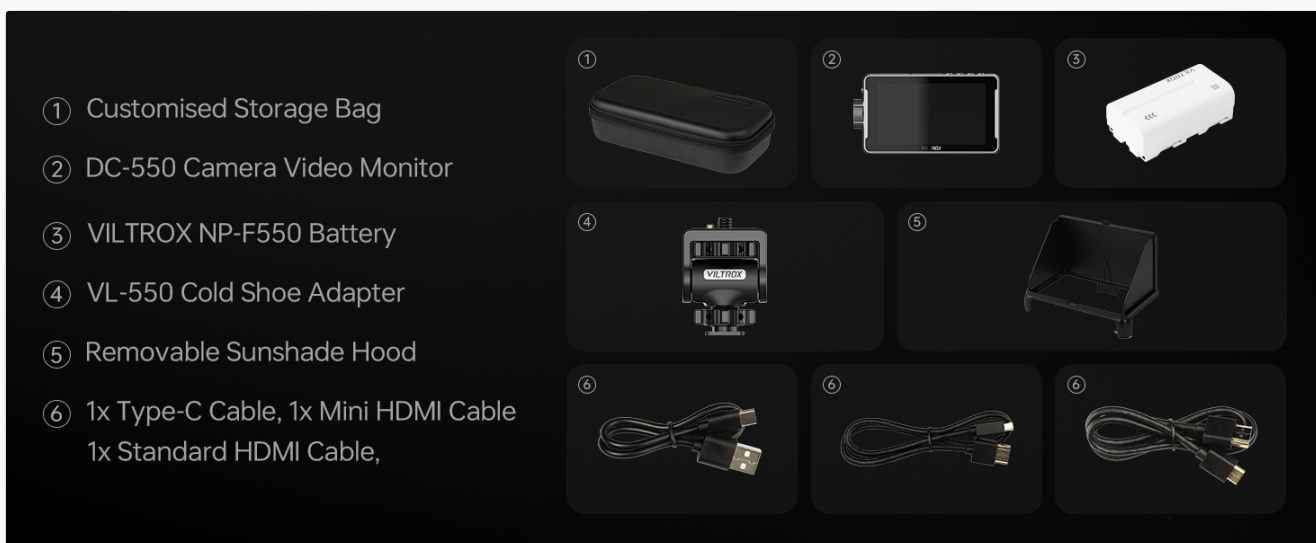


Image Description: A visual representation of the VILTROX DC-550 package contents, showing each item neatly arranged and labeled for easy identification.

2.2 Monitor Components Overview

Familiarize yourself with the main parts of your DC-550 monitor:



Image Description: An exploded diagram illustrating the various components and ports of the VILTROX DC-550 Pro monitor, including the radiator air inlet, battery release button, shortcut keys, rotary knob, and display.

3. SETUP

3.1 Powering the Monitor

The DC-550 offers multiple power options:

- **NP-F Series Battery:** Insert a compatible NP-F series battery (NP-F550/NP-F750/NP-F970) into the battery slot on the rear of the monitor. An NP-F550 battery is included.
- **DC IN:** Connect a 12-18V DC power supply to the DC IN port.
- **Type-C Power Bank:** Use a 5V 3A Type-C power bank for convenient portable power.

QUICK-RELEASE SUNSHADE HOOD

Avoid the interference of strong light, and obtain a good monitoring effect when filming outdoors.



Image Description: The VILTROX DC-550 monitor displaying its various power input options, including the NP-F battery slot, DC IN port, and Type-C port for power bank connection.

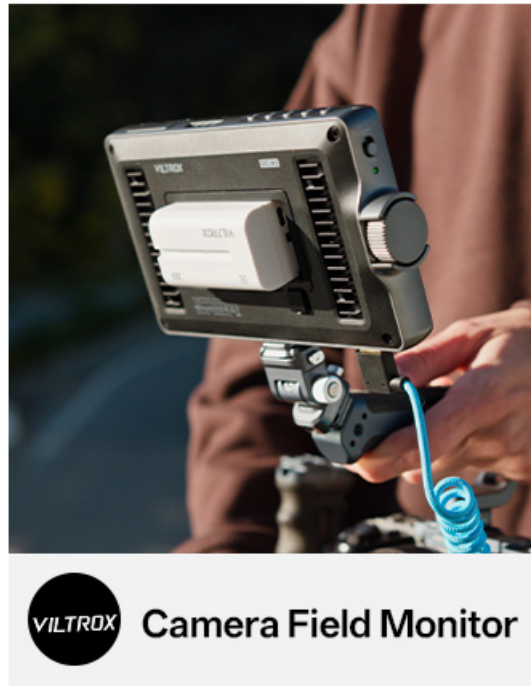


Image Description: A close-up view of the rear of the VILTROX DC-550 monitor, showing an NP-F battery securely installed in its designated slot.

3.2 Mounting the Monitor

The monitor can be mounted using the two 1/4" screw holes or the included VL-550 cold shoe adapter.

- Attach the VL-550 cold shoe adapter to your camera's hot shoe or a compatible rig.
- Secure the monitor to the cold shoe adapter using the 1/4" screw.



Image Description: A close-up image of the VILTROX VL-550 Cold Shoe Adapter, used for mounting the monitor to a camera or rig.

3.3 Attaching the Sunshade Hood

The quick-release sunshade hood helps reduce glare and improve visibility in bright outdoor conditions.

- Align the sunshade hood with the grooves on the monitor's frame.
- Gently press until it clicks into place. It can be removed quickly when not needed.

MULTIPLE POWER SUPPLIES

Supports battery, USB C and DC 12V adapter power supplies

Battery Power

Compatible NP-F550/NP-F750/
NP-F970 series battery



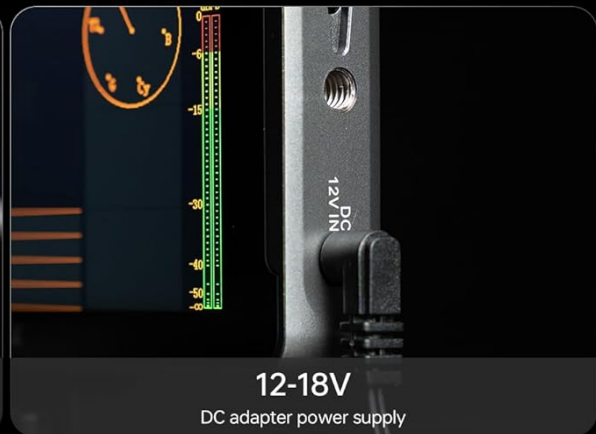
2200mAh

Large Capacity Battery



5V/3A

Type-C power bank supply



12-18V

DC adapter power supply

Image Description: The VILTROX DC-550 monitor shown with its quick-release sunshade hood installed, demonstrating how it helps block strong light for better outdoor viewing.

3.4 Connecting to a Camera

Use the provided HDMI cables to connect your camera to the monitor.

- **HDMI Input:** Connect your camera's HDMI output to the monitor's HDMI IN port. The monitor supports 4K HDMI signals up to 30Hz (3840x2160p, 4096x2160p).
- **HDMI Loop Out:** Use the HDMI OUT port to send the video signal to another monitor or device.
- **Audio Monitoring:** Connect headphones to the 3.5mm stereo headphone jack to monitor audio.

4K HDMI INPUT & LOOP OUT

Full HD resolution reveals the true beauty



Input and Output signal interface:

HDMI 1.4

Maximum supported size:

**4K 30HZ, 3840x2160
4096x2160:
24HZ 25HZ 30HZ**

Image Description: A close-up view of the VILTROX DC-550 monitor connected via HDMI, highlighting the 4K HDMI input and loop out capabilities for seamless integration with camera systems.



Image Description: A detailed shot of the 3.5mm headphone jack on the side of the VILTROX DC-550 monitor, indicating its audio monitoring capability.

4. OPERATING THE MONITOR

4.1 Basic Controls

The DC-550 features both touchscreen and physical button controls for intuitive operation.

- **Touchscreen Control:** Navigate menus, adjust settings, and zoom in/out of your shot using pinch-to-zoom gestures and simple taps on the screen.
- **Physical Button Control:** Use the wheel button (press/rotate) for quick selection and function adjustments. Additional shortcut keys (F1/F2/F3/F4) can be customized for frequently used functions.

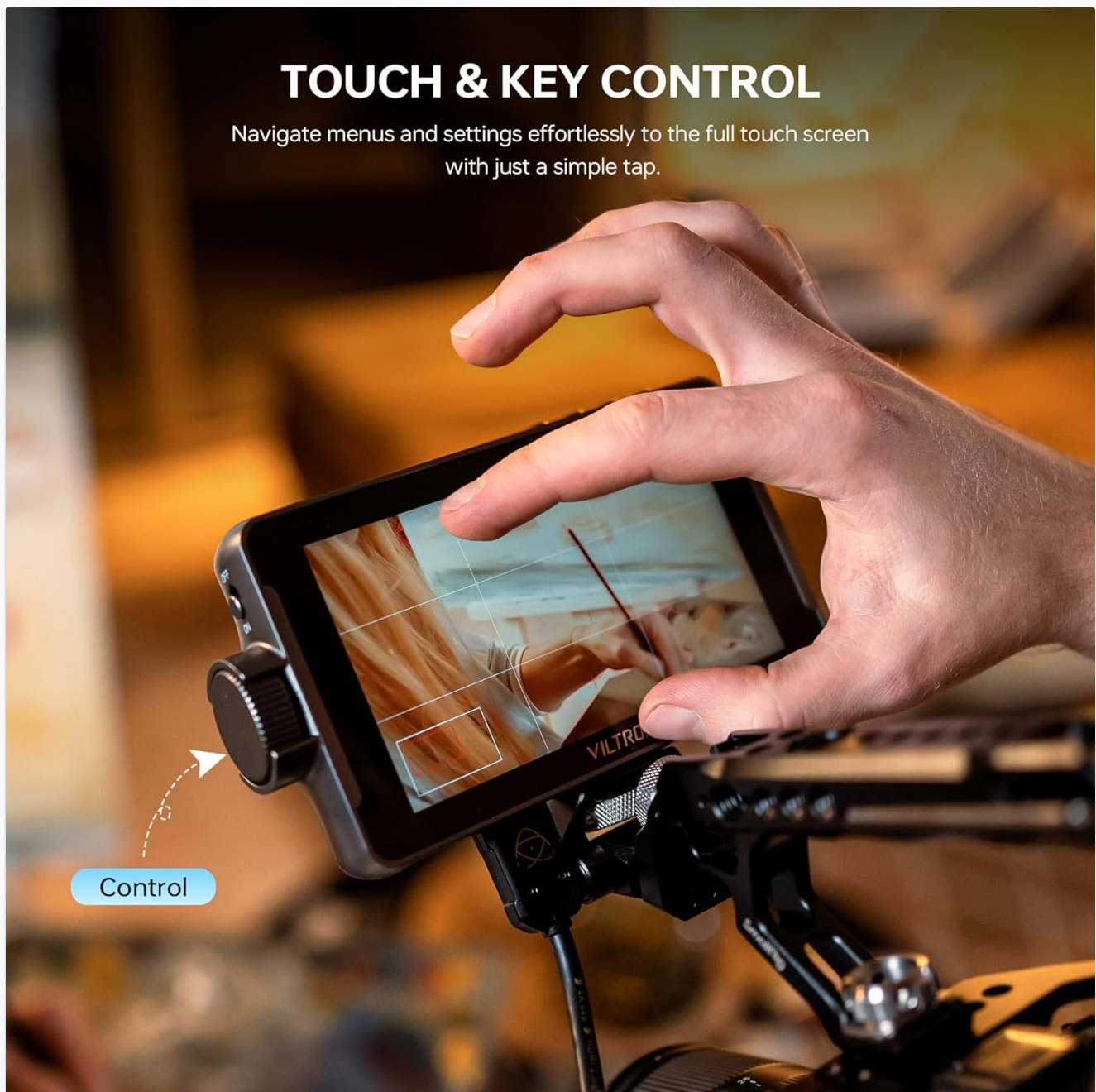


Image Description: A hand interacting with the VILTROX DC-550 monitor, demonstrating both the touch screen functionality and the use of the physical rotary knob for control and navigation.

4.2 Display Features

The 5.5-inch IPS display offers excellent visual quality for critical monitoring.

- **High Brightness:** 1200 nits (cd/m²) for clear visibility even in daylight.
- **Full HD Resolution:** 1920x1080 at 30Hz for sharp images.
- **Wide Viewing Angles:** 160° IPS panel ensures consistent image quality from various perspectives.
- **Color Accuracy:** REC-709 color calibration for true-to-life color reproduction.

5.5" IPS HD LARGE DISPLAY

Observe true-to-life details and monitor from any desired angle.

1200cd/m²
Brightness

1920x1080
Resolution

REC-709
Color Calibration

1000:1
High Contrast

160°
Viewing Angle



Image Description: The VILTROX DC-550 monitor showcasing its 5.5-inch IPS HD display with key specifications like 1200cd/m² brightness, 1920x1080 resolution, REC-709 color calibration, and 160° viewing angle.

4.3 Professional Monitoring Functions

The DC-550 includes a comprehensive set of tools for precise video monitoring:

- **Parade Waveform:** Visualizes the luminance and chrominance levels of your video signal.
- **Oscillogram (Y):** Displays the luminance waveform.
- **Vector Graph:** Shows the color saturation and hue.
- **Brightness Histogram:** Illustrates the distribution of brightness levels.
- **Auxiliary Focus (Peaking):** Highlights in-focus areas for precise focusing.
- **Audio Column:** Displays audio levels.
- **Image Flip:** Flips the image horizontally or vertically.
- **False Color:** Uses color overlays to indicate exposure levels.
- **Zoom:** Magnifies parts of the image for detailed inspection.
- **Gridlines:** Assists with composition.
- **Color Temperature:** Adjusts the color temperature of the display.

- **Pixel to Pixel:** Displays the image at its native resolution.

Custom 3D Lut

The monitor can be upgraded with firmware via SD card



Image Description: The VILTROX DC-550 monitor displaying a range of professional monitoring tools, including 3D LUT, color space, audio column, safe area, mark ratio, image flip, full waveform, zoom, gridlines, color temperature, false color, focus peaking, exposure, histogram, vectorscope, and pixel to pixel.

4.4 Custom 3D LUT Upload

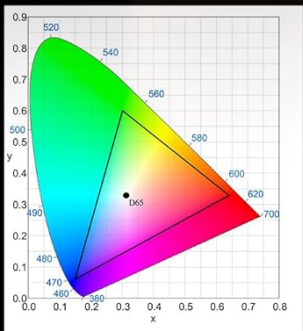
Import custom 3D LUTs via an SD card to preview specific color grades or camera Log modes directly on the monitor.

- Save your .cube LUT files to an SD card.
- Insert the SD card into the monitor's SD card slot.
- Navigate to the 3D LUT menu option and select your desired LUT for application.



HIGH DYNAMIC HDR MONITORING

The monitor can be upgraded with firmware via SD card



Rec.709 Color

 3D Lut Color Space	 Audio Column	 Safe Area	 Mark Ratio	 Image Flip
 Full Waveform	 Zoom	 Gridlines	 Color Temperature	 False Color
 Focus Peaking	 Exposure	 Histogram	 Vectorscope	 Pixel to Pixel

Image Description: A hand inserting an SD card into the VILTROX DC-550 monitor, illustrating the process of uploading custom 3D LUTs for color grading and monitoring.

5. MAINTENANCE

5.1 Cleaning

- **Screen:** Use a soft, lint-free cloth specifically designed for electronics screens. For stubborn smudges, lightly dampen the cloth with a screen cleaning solution (avoid harsh chemicals or alcohol).
- **Body:** Wipe the monitor body with a dry, soft cloth. Do not use liquid cleaners directly on the device.

5.2 Storage

- When not in use, store the monitor in its protective carry case to prevent dust and scratches.
- Keep the monitor in a cool, dry place away from direct sunlight and extreme temperatures.
- Remove the battery if storing for extended periods to prevent leakage.

6. TROUBLESHOOTING

If you encounter issues with your VILTROX DC-550 monitor, refer to the following common troubleshooting steps:

- **No Power:** Ensure the battery is fully charged and correctly inserted, or that the DC power adapter/Type-C power bank is properly connected and supplying adequate power.
- **No Video Signal:** Verify that the HDMI cables are securely connected to both the camera and the monitor. Check the camera's video output settings to ensure it's sending a signal. Try a different HDMI cable if possible.
- **Display Issues (e.g., flickering, incorrect colors):** Check the input source resolution and refresh rate to ensure compatibility with the monitor. Reset monitor settings to default if necessary.
- **Touchscreen Unresponsive:** Power cycle the monitor. Ensure the screen is clean and free of moisture or debris.
- **Overheating:** Ensure the radiator air inlets are not obstructed. Operate the monitor in a well-ventilated area.



Image Description: A detailed view of the radiator air inlet on the VILTROX DC-550 monitor, highlighting its role in heat dissipation for optimal performance.

If problems persist, contact VILTROX customer support for further assistance.

7. SPECIFICATIONS

Feature	Specification
Brand	VILTROX
Model Number	DC-550
Screen Size	5.5 Inches
Display Type	IPS Touch Screen
Resolution	1920x1080 (FHD 1080p)
Max Input Resolution	3840 x 2160 (4K)
Image Brightness	1200 nits (candela_per_square_meter)
Aspect Ratio	1.77:1
Viewing Angle	160°
Contrast Ratio	1200:1
HDMI	4K HDMI Loop In/Out (HDMI 1.4)

Feature	Specification
Power Input	NP-F series battery, DC IN 12-18V, Type-C 5V 3A
Product Dimensions	1.12 x 6.5 x 3.58 inches
Item Weight	2.12 pounds

8. WARRANTY AND SUPPORT

For warranty information and technical support, please refer to the official VILTROX website or contact their customer service directly. Keep your purchase receipt as proof of purchase for any warranty claims.

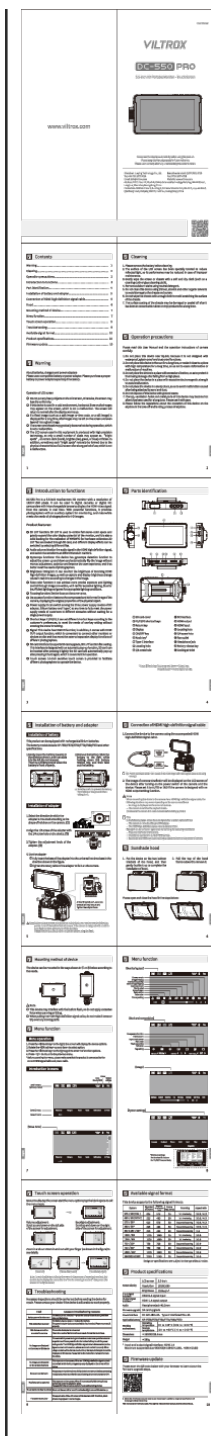
VILTROX Official Website: [Visit the VILTROX Store on Amazon](#)



© 2025 VILTROX. All rights reserved.

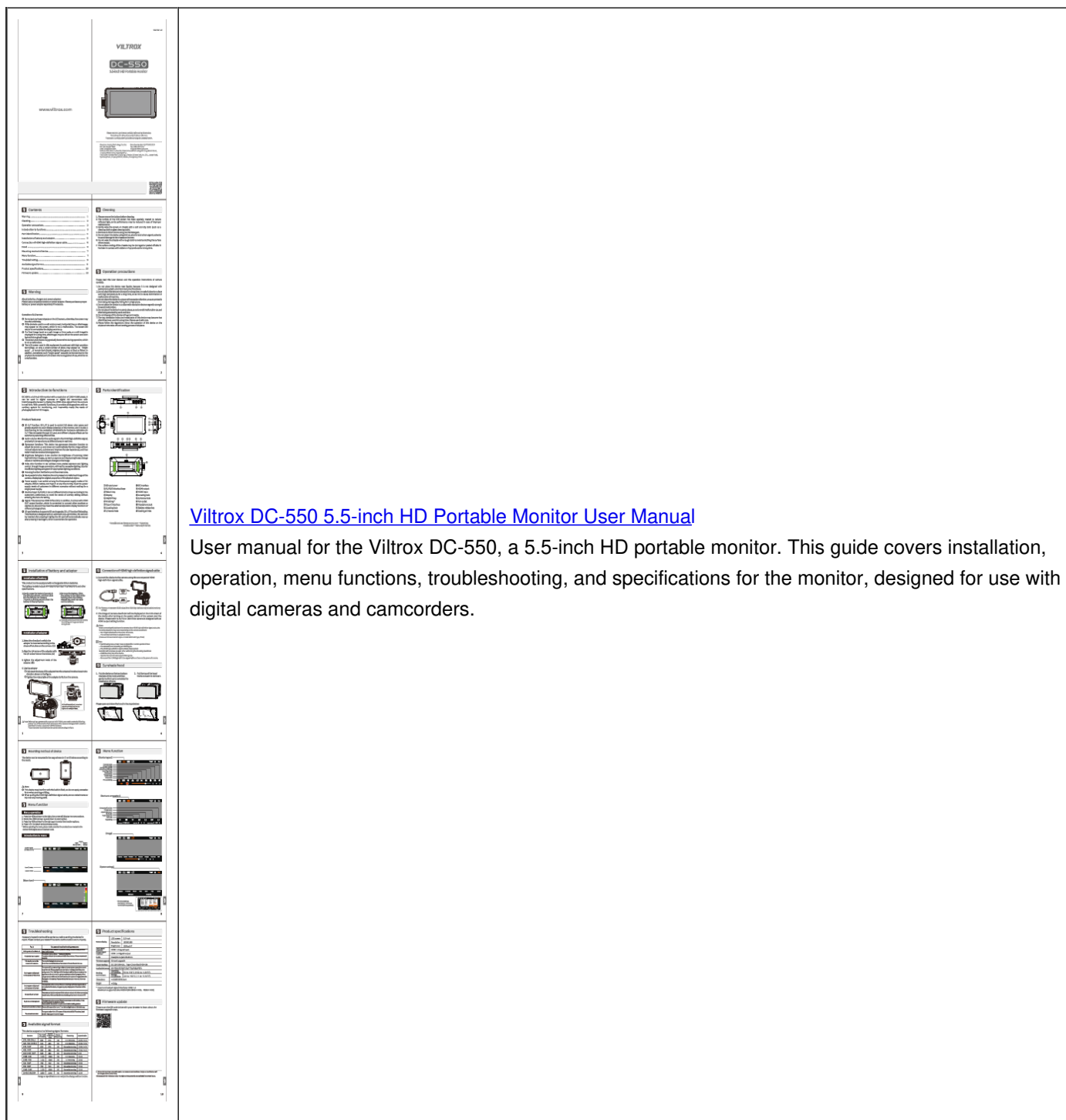
Related Documents - DC-550

--	--



[Viltrox DC-550 PRO 5.5-inch HD Portable Touchscreen Monitor User Manual](#)

This user manual provides detailed instructions for the Viltrox DC-550 PRO, a 5.5-inch HD portable touchscreen monitor. Learn about its features, setup, operation, menu functions, troubleshooting, and specifications.



[Viltrox DC-550 5.5-inch HD Portable Monitor User Manual](#)


User manual for the Viltrox DC-550, a 5.5-inch HD portable monitor. This guide covers installation, operation, menu functions, troubleshooting, and specifications for the monitor, designed for use with digital cameras and camcorders.

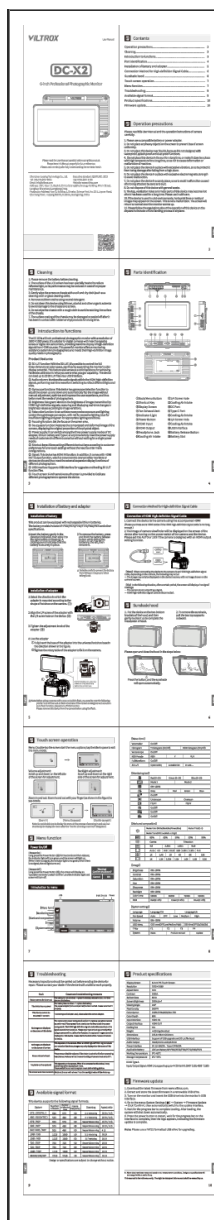
[Viltrox DC-550 Pro 5.5-inch Touchscreen HD Monitor User Manual](#)

This user manual provides detailed instructions for the Viltrox DC-550 Pro, a 5.5-inch touchscreen HD monitor with a resolution of 1920x1080 pixels. It covers features, operation, installation, troubleshooting, and specifications for professional photography and videography.

[Viltrox DC-550 5.5-inch HD Portable Monitor User Manual](#)

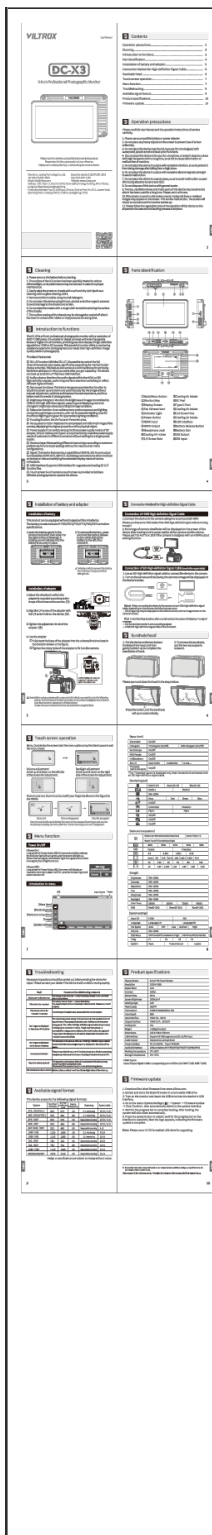
User manual for the Viltrox DC-550, a 5.5-inch HD portable monitor with 1920x1080 resolution, featuring 3D LUT, audio monitoring, gyroscope, brightness histogram, false color, focus peaking, de-squeeze, multiple power options, and shortcut keys. Includes installation, operation, menu functions, troubleshooting, specifications, and available signal formats.

	
1 Introduction	
2 Getting started	
3 Installation	
4 Operation	
5 Troubleshooting	
6 Specifications	
7 Appendix	
8 Index	



[Viltrox DC-X2 6-inch Professional Photography Monitor User Manual](#)

This user manual provides detailed instructions for the Viltrox DC-X2, a 6-inch professional photography monitor. It covers features such as 3D LUT, audio columns, gyroscope function, brightness histogram, false color, focus assist, and more. Learn about installation, operation, troubleshooting, and specifications.



[Viltrox DC-X3 6-Inch Professional Camera Monitor User Manual](#)

This manual provides comprehensive instructions for the Viltrox DC-X3, a 6-inch professional camera monitor. It covers features like 3D LUT, audio monitoring, gyroscope function, brightness histogram, false color, focus assist, and more. Learn about component identification, battery installation, signal connections, touchscreen operation, menu functions, troubleshooting, available signal formats, product specifications, and firmware updates.